

Cree LED HB LED Product Change Notification

Customer Name: All HB SMD Customers

PCN Reference Number:

PCN-06126

Date Issued:

June 9, 2026

Please be advised that Cree LED qualified a change to HB SMD LEDs and that we will begin shipping the affected product with the change after the proposed date.

Please review the additional PCN information below.

Affected Product

Table 1 provides a list of products affected by this change:

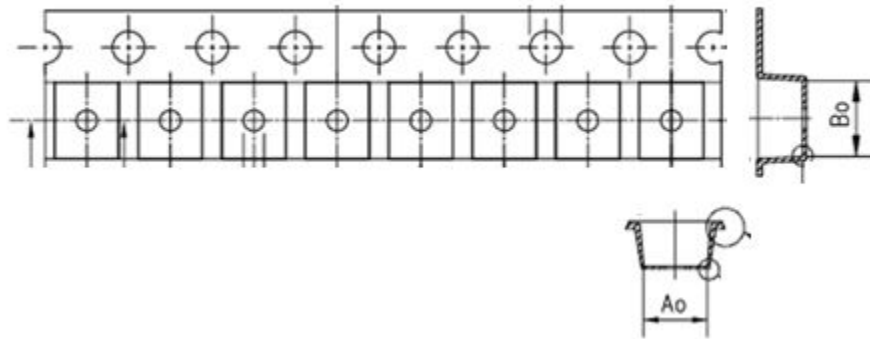
Table 1 Affected Products List

| Affected LED Series | Affected Products List |
|---------------------|---|
| *LMU* | CLMUD-FKA、CLMUD-FKC、CLMUL-FKA、CLMUC-FKA、SLMUD-FKA |
| *LP6*/*LV6* | CLP6C-FKB、CLV6F-FKB、CLV6F-FKW、CLV6A-FKB、CLV6B-FKB、CLV6D-FKB、QLV6B-FKW、QLV6F-FKW、SLV6D-FKB、SLV6F-FKB、SLV6A-FKB |

Description of the Change

Cree LED will change the carrier tape of the following listed SMD LEDs at “Ao” and “Bo” locations. The data sheets of affected LEDs will be updated accordingly.

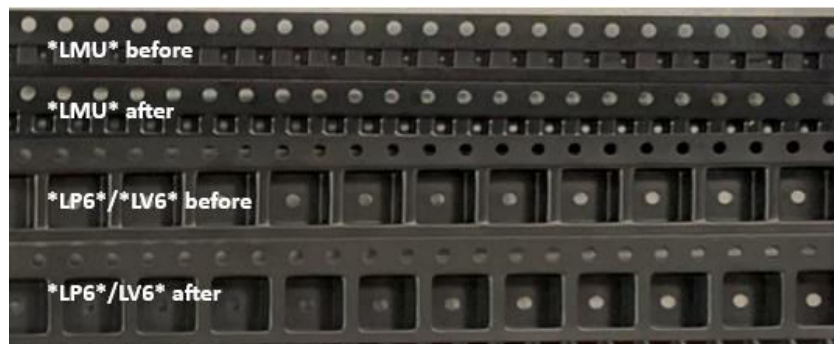
1. Carrier Tape Change Location:



2. Carrier Tape Dimension Change:

| Product Series | | Ao | Bo |
|----------------|--------|------|------|
| *LMU* | Before | 1.65 | 1.60 |
| | After | 1.70 | 1.70 |
| *LP6*/*LV6* | Before | 6.12 | 6.12 |
| | After | 5.90 | 6.10 |

3. Carrier Tape Appearance Change:



Reason for the Change

This change ensures security of supplies.

Change Impact on Form, Fit, Function, or Reliability

This has no impact on the form, fit, function or reliability of the above series LEDs. We will begin shipping the affected product by the proposed date below.

Key Dates

Table 2 provides estimated dates for key PCN Milestones based on information available at the date the PCN was issued. Any updates to these dates can be provided by the Cree LED contact listed in Table 3.

Table 2 Key PCN Estimated Dates

| | |
|---------------------------|---------------------------|
| Proposed First Ship Date: | 1 st Sep, 2026 |
|---------------------------|---------------------------|

Cree LED Contact Information

If you have any questions regarding this PCN please contact:

Table 2 PCN Contact

| | |
|------------------------|--|
| Contact: | Sam Lai |
| Contact E-Mail: | Sam.Lai@cree-led.com |
| Contact Phone: | +852 2424-8228 |
| Address: | Unit 525 – 530, 5/F, Building 1W, Phase One, 1 Science Park West Avenue, Hong Kong Science Park, Shatin, New Territories, Hong Kong |

Hello Everyone,

This is a Product Change Notification for High Brightness LMU, LP6 & LV6 LEDs.

Affected Product List:

CLMUD-FKA

CLMUD-FKC

CLMUL-FKA

CLMUC-FKA

SLMUD-FKA

CLP6C-FKB

CLV6F-FKB

CLV6F-FKW

CLV6A-FKB

CLV6B-FKB

CLV6D-FKB

QLV6B-FKW

QLV6F-FKW

SLV6D-FKB

SLV6F-FKB

SLV6A-FKB

Please make sure to send this PCN notification to all affected customers. We need your help to communicate this notification.

Thanks!

Mary Beth Arnold

| Product Group | Kit Number |
|---------------|---------------------------------|
| CLMUD-FKA | CLMUD-FKA-CL83a478bcL6L8BB7a353 |
| CLMUD-FKA | CLMUD-FKA-CL81781L61BB7D4C3 |
| CLMUD-FKC | CLMUD-FKC-CHJnpM569aBB845343 |
| CLMUD-FKC | CLMUD-FKC-CH1np1561BB7T4S3 |
| CLV6F-FKB | CLV6F-FKB-Cqrvwxy1b1cHnpBB7a363 |
| CLV6F-FKB | CLV6F-FKB-Cqr1xy1H1BB7D3D3 |
| CLP6C-FKB | CLP6C-FKB-CKNPRGJBB7a363 |
| CLP6C-FKB | CLP6C-FKB-CK1P1G1BB7R3R3 |
| CLP6C-FKB | CLP6C-FKB-CM1Q1H1BB7R3R3 |