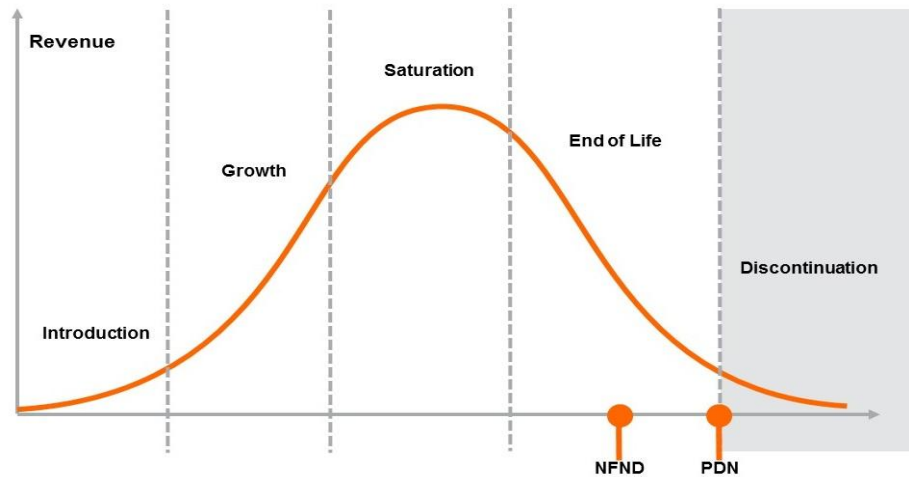


## Product Or Individual Q-Code Discontinuation (acc. JEDEC J-STD-048) OS-PDN-2026-167

15 May 2026

**Last order:** 15 July 2026

**Last delivery:** 15 October 2026



### Important notes:

- Series production ends with the LTO (Last Time Order) date.
- Last order must be placed latest before LTO date as standard order.
- Latest possible request date is defined by the LTD (Last Time Delivery) date and is valid for LTO orders as well as existing order backlog.
- The purchase quantity is limited to once per month until LTD date and is considered as NCNR (Non-Cancelable – Non-Returnable).
- To cover short term demand fluctuation, customer is asked to keep a sufficient buffer stock to avoid supply disruptions.

Please direct your feedback to your local Sales office.

DISCONTINUED				NEW (REPLACEMENT)		
Device	Ordering Code	Brand	Reason for discontinuation	Device	Datasheet Ordering Code	Brand
PLPCOS 450D	all	Chip On Submount				
PLPCOS 450D	Q65112A8851	Chip On Submount	Change to next Generation/ higher Power	PLPCOS 450E1_EW_B52B59	Q65115A0324	Chip On Submount
PLPCOS 450D_B61B63_N	Q65113A6197	Chip On Submount	Change to next Generation/ higher Power			
PLPCOS 450D_B59B60_N	Q65113A6198	Chip On Submount	Change to next Generation/ higher Power			
PLPCOS 450D_B57B58_N	Q65113A6199	Chip On Submount	Change to next Generation/ higher Power			
PLPCOS 450D_B54B55_N	Q65113A6200	Chip On Submount	Change to next Generation/ higher Power			
PLPCOS 450D_B53B54_N	Q65113A6201	Chip On Submount	Change to next Generation/ higher Power			
PLPCOS 450D_B49B52_N	Q65113A6202	Chip On Submount	Change to next Generation/ higher Power			
PLPCOS 450D_B54B64	Q65113A6203	Chip On Submount	Change to next Generation/ higher Power			
PLPCOS 450D_B49B58	Q65113A6204	Chip On Submount	Change to next Generation/ higher Power			
PLPCOS 450D_B49B64	Q65113A6205	Chip On Submount	Change to next Generation/ higher Power			
PLPCOS 450EEW	all	Chip On Submount				
PLPCOS 450E_EW_B51B60	Q65115A0325	Chip On Submount	Change to next Generation/ higher Power	PLPCOS 450E1_EW_B52B59	Q65115A0324	Chip On Submount