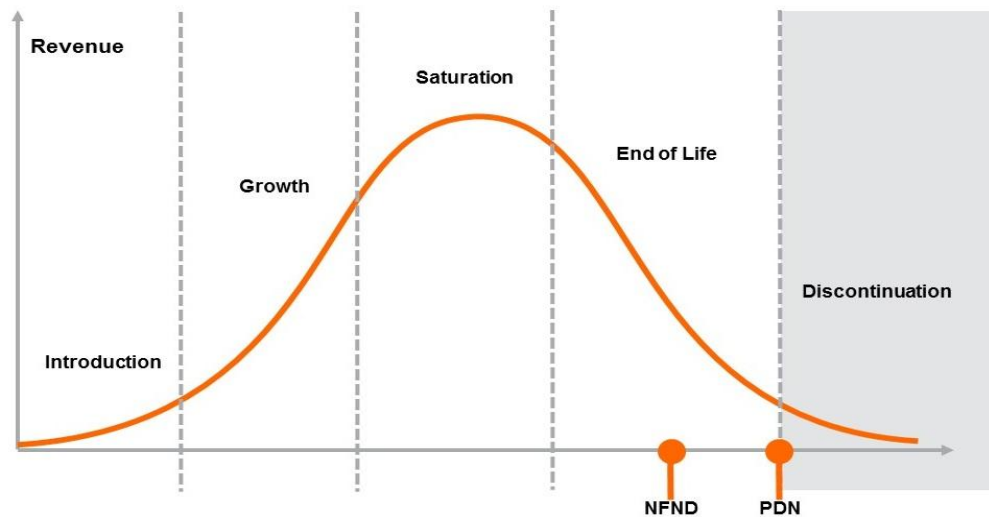


Product Or Individual Q-Code Discontinuation (acc. JEDEC J-STD-048) OS-PDN-2026-040

14 May 2026

Last order: 15 May 2026

Last delivery: 15 May 2026



Important notes:

- Series production ends with the LTO (Last Time Order) date.
- Last order must be placed latest before LTO date as standard order.
- Latest possible request date is defined by the LTD (Last Time Delivery) date and is valid for LTO orders as well as existing order backlog.
- The purchase quantity is limited to once per month until LTD date and is considered as NCNR (Non-Cancelable – Non-Returnable).
- To cover short term demand fluctuation, customer is asked to keep a sufficient buffer stock to avoid supply disruptions.

Please direct your feedback to your local Sales office.

DISCONTINUED				NEW (REPLACEMENT)		
Device	Ordering Code	Brand	Reason for discontinuation	Device	Datasheet Ordering Code	Brand
Whole Device						
LQ4-V4MDPB-0708_G2	Q65113A6960	LED Engin	no demand	N/A		