

7 January 2026

Dear Customer,

**Re: Product change notification for Harwin product.**

There has been a change to the tape pocket on the following products:

Part Number	Tape Width change	Technical Drawing
S1621-46R	From 24mm to 32mm	<a href="https://content.harwin.com/m/8d4be5d53941542d/original/DRG-02192-Technical-Drawing-Datasheet-S1621R-pdf.pdf">https://content.harwin.com/m/8d4be5d53941542d/original/DRG-02192-Technical-Drawing-Datasheet-S1621R-pdf.pdf</a>

Please see the latest Technical Drawing following the above link.

Any additional changes to the tape are only those required under the increase in tape size (in line with EIA-481), including the addition of the second row of sprocket holes. The components are not affected and remain unchanged.

This packaging change improves the stability of the tape in your production machine feeder, when the components are picked up.

All new and existing orders at Harwin will be supplied in the new tape width. Reels with the new tape width will be clearly labelled for a minimum of 12 months. Using the new design will require a change to your Pick/Place machine setup to accept the wider tape width.

As stock filters through our Distribution network, you may still receive the old design in the short term.

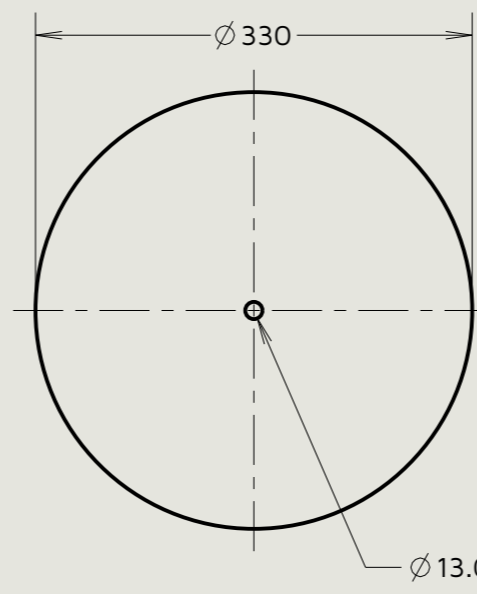
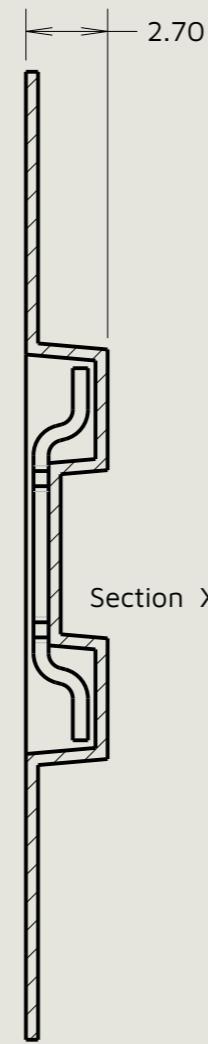
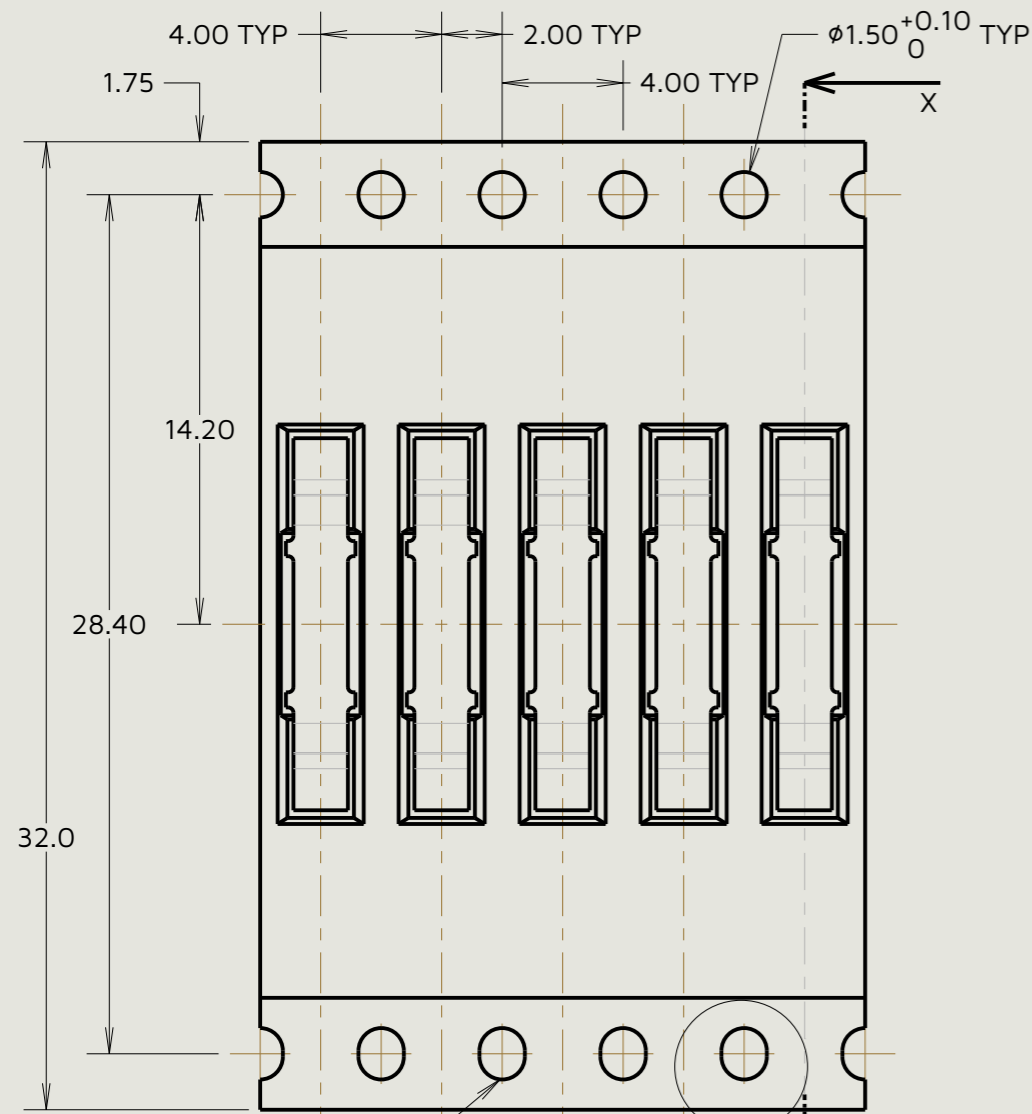
If you have any further questions regarding this letter, please do not hesitate to contact us.

Yours faithfully,

The Product Change Team  
[support@harwin.com](mailto:support@harwin.com)

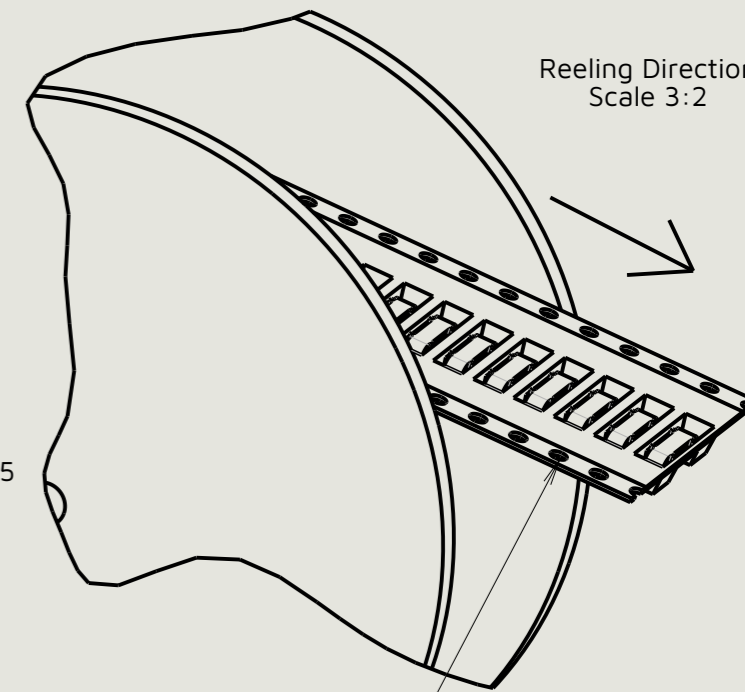
# Customer Information Sheet

Specifications  
 Material = Brass CW508L 1/2 Hard  
 Finish = 100% Tin over Nickel  
 Electrical:  
 Current rating = 10A (30°C temp rise)  
 Contact resistance = 20mΩ MAX  
 Environmental:  
 Operating temperature = -40°C to +125°C



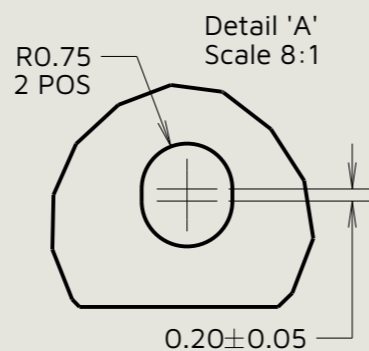
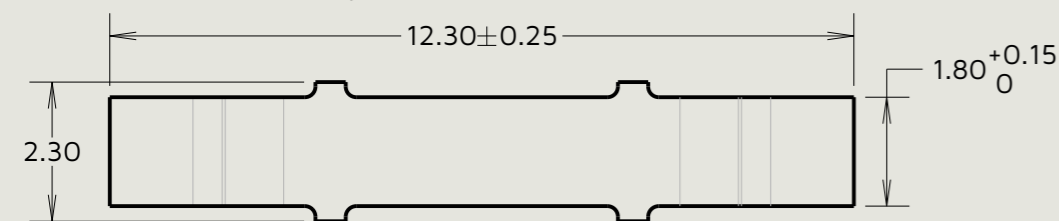
Reel Details

$\phi 100.0^{+0.5}_0$

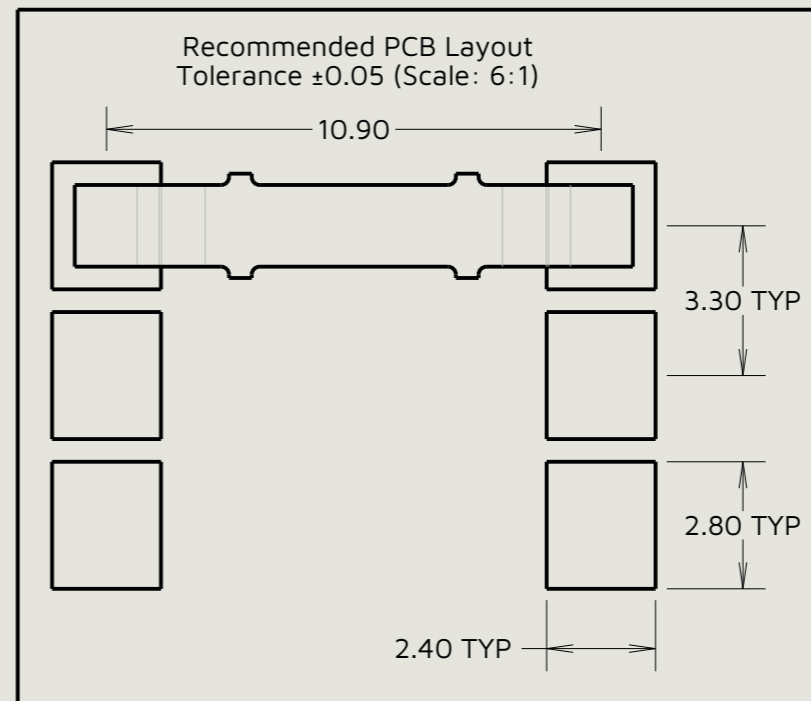


Reeling Direction  
Scale 3:2

Elongated Sprocket Holes  
Component Details (Scale: 8:1)  
Detail 'A'

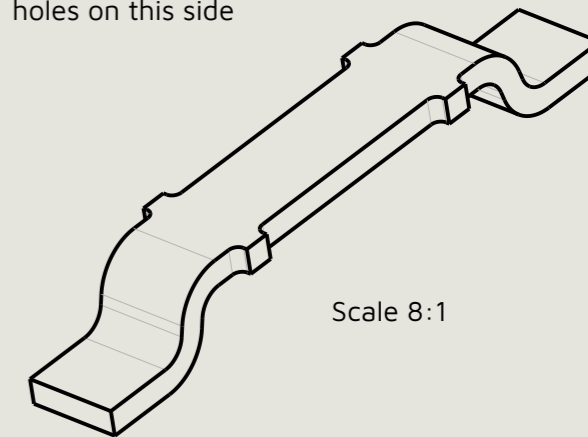


Detail 'A'  
Scale 8:1



Recommended PCB Layout  
Tolerance ±0.05 (Scale: 6:1)

Elongated sprocket holes on this side



Scale 8:1

- Notes  
 1. Quantity per reel = 5,000.  
 2. This product is taped and reeled in accordance with EIA-481.  
 3. For loose components, see S1621-XX.

**HARWIN**  
www.harwin.com

This drawing and any information or descriptive matter set out hereon are confidential and copyright property of the Harwin group and must not be disclosed, loaned, copied or used for manufacturing, tendering or for any other purpose without their written permission.

TOLERANCES  
 X. = ±0.50mm  
 X.X = ±0.30mm  
 X.XX = ±0.10mm  
 X.XXX = ±0.01mm  
 Angles = ±5°  
 Unless stated

Third angle projection  
  
 Sheet scale: 4:1  
 Do not scale  
 Sheet size: A3

MATERIAL:  
 See above  
 FINISH:  
 See above

Title:  
 Surface Mount Jumper (Tape and Reeled)

Drawing number:  
**S1621-46R**  
 SHT 2 OF 2

AB	12	06.01.26	37420
Initials	Rev.	Date	CO
JAE	2	02.08.04	8105