

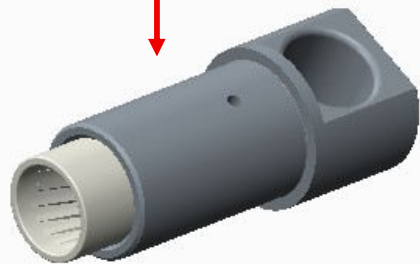
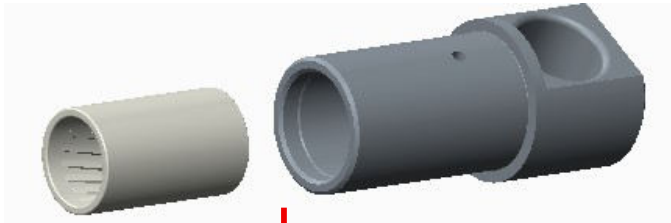
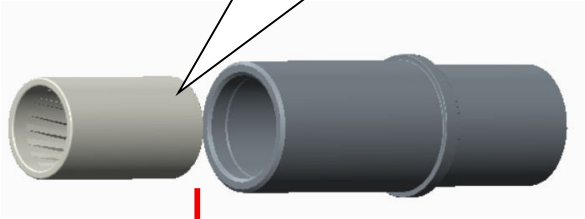
Amphenol PCD

Engineering Change Request		ECR Number	R10442W
Initiator:	Aaron	Date:	2026.7.1
Part number description			
Reason of change:			
<input type="checkbox"/> Customer requirement (list the feasibility analysis of customer specification: _____)			
<input type="checkbox"/> Supplier request (list the PCR number: _____)			
<input checked="" type="checkbox"/> internal improvement <input type="checkbox"/> corrective <input type="checkbox"/> other			
Please describe here in detail:			
<p>Optimize the female pin assembly process by changing the construction from assembled type to integrated one-piece structure. The modification exerts no adverse impact on product assembly and electrical performance. (HVSL1200 Series)</p>			
Change level and impact assessment (Please tick in the appropriate position)			
Change level	Change content	Whether to notify the customer	
Level 1	<input type="checkbox"/> Operator change	<input type="checkbox"/> It is not necessary to notify the customer for approval	
	<input type="checkbox"/> Correct the clerical errors of the drawing, BOM, etc., and this change will not affect the production process		
Level 2	<input type="checkbox"/> Change of Main production equipment or tools/Jigs	<input checked="" type="checkbox"/> <u>Customers should be notified for approval</u> <input type="checkbox"/> <u>It is not necessary to notify the customer for approval, the reasons are as follows:</u>	
	<input type="checkbox"/> Change of main measuring equipment or tools/Jigs		
	<input type="checkbox"/> Appearance changes that do not affect product functions		
	<input type="checkbox"/> Changes in production process or processing technology		
	<input type="checkbox"/> Product structure or specification changes that have not been transferred to mass production		
	<input checked="" type="checkbox"/> Product structure or specification changes that have been transferred to mass production		
	<input type="checkbox"/> Supplier's production process change or supplier's production site change or addition or replacement of suppliers		
Level 3	<input type="checkbox"/> Change of production site	<input type="checkbox"/> Customers should be notified for approval	
	<input type="checkbox"/> Product material changes		
	<input type="checkbox"/> Change of packaging method		
	<input type="checkbox"/> Changes proposed by the customer		

Amphenol PCD

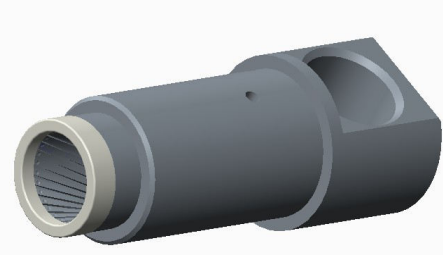
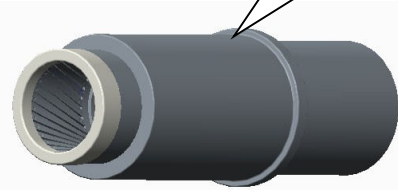
Before change

Assembled type structure



After change

Monolithic construction



Disposition of old materials

Rework Use as it is scrap

Other (please describe): _____

N/A

Expect date to switch to new material

2026.7.30

Approval by the supervisor of requester.:

Chason. Ding

Approval by the head manager of the request dept.:

Andy Gao

Customer approval:

Approved No approved Conditional approval (please describe) :

Signature:

Date:

Remark:

Dear Customer,

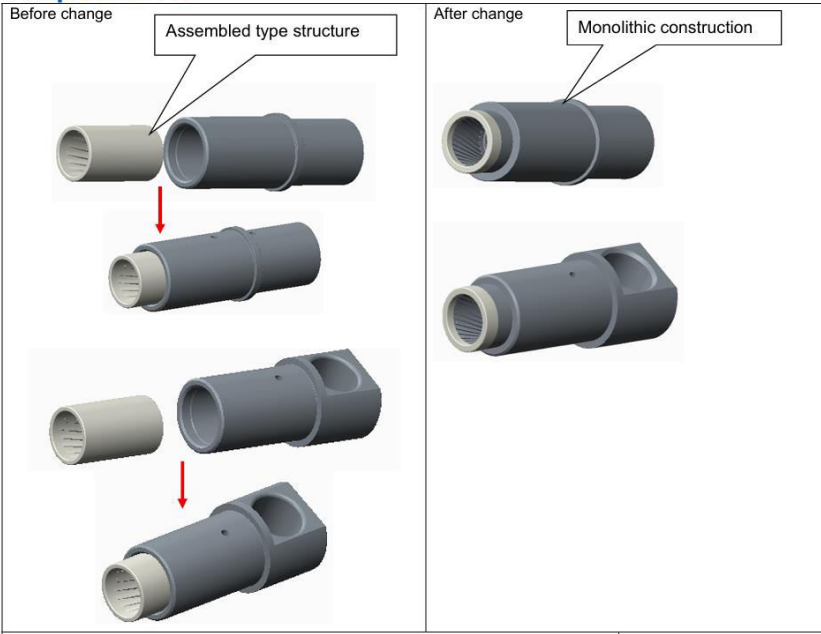
Optimize the female pin assembly process by changing the construction from assembled type to integrated one piece structure. The modification exerts no adverse impact on product assembly and electrical performance. (HVSL1200 Series)

Attached pls find the ECR, pls kindly note and help inform your end customer to sign back within 1 weeks if no problem, no response **within 1 weeks** will be deemed as consent.

Thank you

Related your PN as below:

P/N	Description
HVSL1200082A170	PLUG RA A KEY
HVSL1200062A195	PLUG A KEY
HVSL1200062A170	PLUG A KEY
HVSL1200082A195S4	HVSL1200 PLUG ANGLE 90°WIRE ASSEMBLY KEY A W/ INTERLOCK H+S 95MM2
HVSL1200062B195	PLUG B KEY



Sandy Xia | Amphenol PCD Shenzhen

O: +86 755-8173-8000 ext.8533 | M: +86 157-7922-5480