



The IP&E
Specialist

Supply Chain Solutions

Programs and Services to Fit Your Needs



INVENTORY PROGRAMS

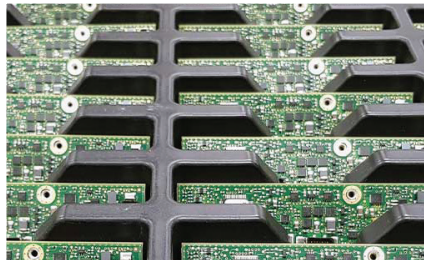
Consult with a TTI Supply Chain Manager

TTI Supply Chain Service Managers work with a team of TTI inventory planning experts to provide a custom solution tailored to your exact needs. Your program might prioritize increased inventory turns and cost reductions, others need the financial flexibility of delayed ownership, while almost everyone needs to mitigate supply chain disruptions.



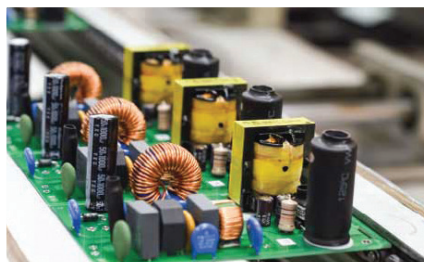
Inventory Where You Need It

- Bonded Inventory in a TTI Facility
- Consignment Programs at Your Location
- Staffed, In-Plant Store



Optimization

- Total Acquisition Cost Optimization
- Lead Time Management
- Risk Mitigation



Reserved Inventory Solutions

- MRP Demand Share
- Estimated Annual Usage
- Kanban/Min-Max
- Custom Hybrid Programs

Reach your local
TTI Specialist at
1.800.CALL.TTI

tti.com

YOUR DIGITAL SUPPLY CHAIN

Customize Your Digital Account Management

Application Programming Interfaces (API), Electronic Data Interchange (EDI), and eCommerce Tools – whatever your digital communication preferences, our suite of digital commerce tools make your supply chain visibility crystal clear.

Solutions Designed to Fit the Way You Work

- Increased Order Information Velocity
- Instant Access to Product Information
- Easily Cross Reference Component Alternatives
- Single Point Management of Your Digital Supply Chain



Application Interface Programming (API)

Real-time pricing, availability, lead time and component information will speed your time to market. APIs also return financial savings through reduced manual data-entry and order placement, which improves accuracy.



Search API

Single component, lead time, available inventory, price and more



Quote API

Information for a group of parts/bill of materials in a single query



Order API

Place your order rapidly via a direct link to our system



Lead Times API

Gain insight on component lead-times drawn from our real-time purchasing data



Fast and Accurate Data for Decisions

Full time access to manage your business digitally. Manage your forecasts and orders, view order status, order history, shipments, waybill information, invoice status – and more.

**PAPERLESS
INVOICING**

**2-CLICK
ORDERING**

**CUSTOM
PART
NUMBERS**

**PREFERRED
PRICING**



QUALITY AND RELIABILITY

TTI is the first distributor to have all global warehouse locations ISO registered and currently are certified to ISO 9001 with AS9100C and ISO 14001 in North America, ISO 9001, EN 9100, ISO 14001 and EN 9120 in TTI Europe and ISO 9001 in TTI Asia.



Year after year, customers rate our inventory availability, on-time delivery and accuracy among the very best in the industry – call your local TTI Specialists at 1.800.CALL.TTI and discover why.



02/24
1500