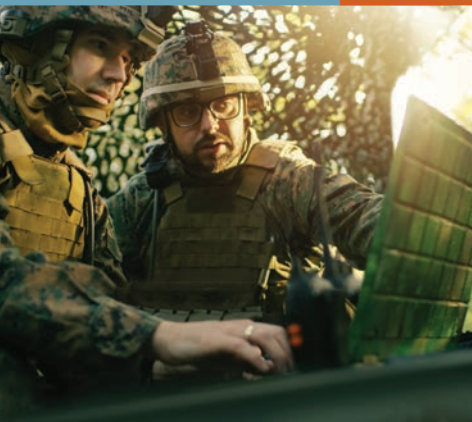
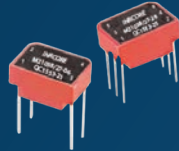
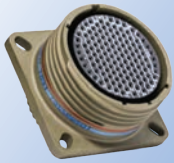
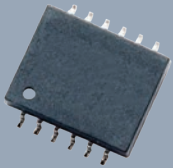


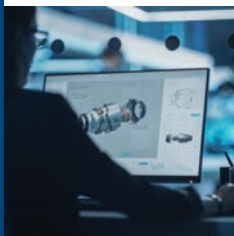


The IP&E  
Specialist

# Military & Aerospace



Mil-Std and Hi-Rel  
In Stock and  
Available to Sell



Reach your local  
TTI Specialist at  
**1.800.CALL.TTI**

[tti.com](http://tti.com)





The challenges and demands of today's rapidly changing global market require more efficient and productive operations to remain competitive. TTI embraces these challenges, consistently delivering a wide variety of solutions for our military and aerospace customers. This line card is representative of TTI manufacturers with military specified MIL-Spec components.

Visit [www.tti.com](http://www.tti.com) for a broader listing of authorized TTI suppliers for COTS and/or commercial applications.



## GROUNDING IN MILITARY SUPPORT

TTI was founded in 1971 specifically to serve military customers with MIL-Spec passive components. Today, TTI maintains that dedication with the industry's broadest and deepest inventory of military passives, as well as continually expanding lines of electromechanical components and discrete offerings to ultimately reduce your total cost of ownership. The product specialists at TTI have extensive knowledge of MIL-Specs and their relationship with commercial parts. The ability of the TTI Specialists to cross-reference part numbers, make cost-effective recommendations and identify product upgrades, can help answer your most difficult questions and satisfy your toughest requirements.

## BEYOND PREMIER PRODUCTS

TTI experts have developed applications, programs and systems to seamlessly manage inventory and logistics through fully customizable supply chain solutions. This system leverages the industry's broadest and deepest inventory of military passives and connectors.

TTI employs a team of highly trained and experienced material management experts. A regional supply chain solutions manager will assess the current state of your manufacturing process and provide recommendations on the appropriate supply chain solution, to minimize total acquisition and inventory management costs. Once a supply chain program is developed, its management team ensures the program is running properly and optimized to speed your time to market.



## Suppliers by Component

### CONNECTORS

AirBorn  
Amphenol  
Aptiv (formally Delphi)  
Carlisle (Tri-Star)  
Conesys  
Delta  
Eaton Souriau  
Glenair  
INCON Inc.  
ITT Cannon  
Molex  
Panduit  
Preci-Dip  
TE Connectivity  
Vishay/Dale

### CAPACITORS

BMI  
Chemi-Con  
Cornell Dubilier  
CTS  
Dearborn  
KEMET (YAGEO)  
KYOCERA AVX  
Spectrum Control  
Vishay

### CIRCUIT PROTECTION

EATON  
Littelfuse

### DISCRETE SEMICONDUCTORS

Bourns  
EATON  
Littelfuse  
Nexperia  
ROHM Semiconductor  
Toshiba  
TT Electronics/Semelab  
Vishay  
VPT Components

### RESISTORS

Bourns  
Honeywell  
OHMITE  
TT Electronics/IRC  
Vishay  
Vishay Precision Group

### FILTERS

KYOCERA AVX  
CTS  
Gowanda  
Spectrum Control

### INDUCTORS

Delevan  
Gowanda  
Vanguard Electronics

### TRANSFORMERS

iNCORE  
Vanguard Electronics

### RELAYS

Amphenol  
TE Connectivity

### SENSORS

Honeywell

### SWITCHES

C&K  
Honeywell

### WIRE AND CABLE MANAGEMENT

3M  
Glenair  
HellermannTyton  
Panduit  
TE Connectivity

## VALUE-ADDED SERVICES

### All Services are Manufacturer Authorized

TTI recognizes the expanding needs of the military market and has extended the number and scope of services offered to meet the needs of our military customers:

- Bar Code Labeling (2D part labeling)
- Calibration Systems, ANSI/NCSL Z540-1-1994
- Category B Marking
- Connector Assembly, Category C
- Dedicated Military Programs, MIL-STD-790
- Documentation and Traceability, MIL-STD-790
- ESD Packaging, Including Special Requirements
- ESD Program, Compatible with MIL-STD-1686
- Hot Solder Dipping, Component Lead Preparation IPC/EIA J-STD-002
- International Shipping and Documentation
- Military Inspection Standards, ANSI-Z1.4 and MIL-STD-1686
- MIL Packaging, MIL-STD-1686, MIL-STD-2073-1, MIL-STD-794
- Solderability Testing, MIL-STD-202/208, IPC/EIA J-STD-002
- Special Certifications
- Special Date Codes
- Tape and Reel, EIA-296, EIA-468, EIA-481



## Committed to Quality ISO 9001 and AS9100C Registered

TTI is proud of its heritage in the defense industry and our commitment to the warfighter is reflected in our quality systems. TTI is registered to ISO 9001 globally and AS/EN9100 in North America and Europe. TTI's total quality processes assure you the utmost in accuracy with product and delivery around the globe, tailored to your exact requirements.

CIRCULAR CONNECTORS	Amphenol	Amphenol Fiber	Amphenol Matrix	Amphenol PCD	Aptiv (Delphi)	Conesys	Eaton Souriau	Glenair	ITT Cannon	TE Connectivity
	<b>AS50151 (MIL-DTL-5015 Solder)</b>									
MS3100	◆									◆
MS3101	◆									◆
MS3102	◆									◆
MS3103	◆									◆
MS3106	◆									◆
MS3107	◆									◆
MS3108	◆									◆
MS3507	◆									◆
MS25183	◆									◆
<b>AS50151 (MIL-DTL-5015 Crimp Front Release)</b>										
MS3400						◆				
MS3401						◆				
MS3402						◆				
MS3404						◆				
MS3406						◆				
MS3408						◆				
MS3409						◆				
MS3412						◆				
<b>AS50151 (MIL-DTL-5015 Crimp Rear Release)</b>										
MS3450 L/W		◆				◆				
MS3451 L/W		◆				◆				
MS3452 L/W		◆				◆				
MS3454 L/W		◆				◆				
MS3456 L/W		◆				◆				
MS3459 L/W		◆				◆				
<b>AS50151 (MIL-DTL-5015 Crimp Rear Release Stainless Steel to Firewall)</b>										
MS3450 KS/KT/LS		◆				◆				
MS3451 LS		◆				◆				
MS3452 LS		◆				◆				
MS3454 LS		◆				◆				
MS3456 KS/KT/LS		◆				◆				
MS3459 KS/KT/LS		◆				◆				
<b>AS29600</b>										
M29600/10										◆
M29600/11										◆
M29600/12										◆
M29600/20										◆
M29600/21										◆
M29600/22										◆
M29600/23										◆
M29600/24										◆
<b>AS81703</b>										
MS3130										◆
MS3132										◆
MS3134										◆
MS3135										◆
MS3137										◆
MS3138										◆
MS3139										◆
MS3140										◆
MS3144										◆
MS3147										◆
MS3148										◆
MS3424										◆

CIRCULAR CONNECTORS	Amphenol	Amphenol Fiber	Amphenol Matrix	Amphenol PCD	Aptiv (Delphi)	Conesys	Eaton Souriau	Glenair	ITT Cannon	TE Connectivity
	<b>AS81703 cont.</b>									
MS3445										◆
MS3446										◆
MS3464										◆
MS3466										◆
MS3467										◆
<b>MIL-DTL-55181</b>										
M55181/1					◆					
M55181/2					◆					
M55181/3					◆					
M55181/4					◆					
M55181/7					◆					
M55181/8					◆					
<b>AS81511</b>										
M81511/13								◆		
M81511/14								◆		
M81511/16								◆		
M81511/17								◆		
M81511/18								◆		
M81511/19								◆		
M81511/4X										◆
M81511/5X										◆
<b>MIL-C-83522</b>										
M83522/16		◆			◆					
M83522/17		◆			◆					
<b>MIL-DTL-83526</b>										
M83526/20		◆								
M83526/21		◆								
<b>MIL-DTL-83723 Series III Aluminum</b>										
M83723/7X-A/R/W			◆			◆				
M83723/8X-A/R/W			◆			◆				
<b>MIL-DTL-83723 Series III Stainless Steel to Firewall</b>										
M83723/7X-G			◆			◆				
M83723/8X-G			◆			◆				
M83723/9X G/K			◆			◆				
M83723/97 & 98 N/S			◆			◆				
<b>Hermetics</b>										
D38999/21 N/Y	◆						◆	◆		◆
D38999/23 N/Y	◆						◆	◆		◆
D38999/25 N/Y	◆						◆	◆		◆
D38999/27 N/Y	◆						◆	◆		◆
D38999/41H,N,Y								◆		◆
D38999/43H,N,Y								◆		◆
D38999/45H,N,Y								◆		◆
<b>EN2997Y0</b>										
EN2997Y0	◆					◆	◆			◆
<b>EN2997Y1</b>										
EN2997Y1	◆					◆	◆			◆
<b>EN2997Y7</b>										
EN2997Y7	◆					◆	◆			◆
<b>EN2997YE0</b>										
EN2997YE0	◆					◆	◆			◆
<b>EN2997YE1</b>										
EN2997YE1	◆					◆	◆			◆
<b>EN2997YE7</b>										
EN2997YE7	◆					◆	◆			◆
<b>ESC10Y Y/E</b>										
ESC10Y Y/E	◆					◆	◆			◆
<b>ESC14Y Y/E</b>										
ESC14Y Y/E	◆					◆	◆			◆
<b>M24308/9</b>										
M24308/9								◆		◆
<b>M81703</b>										
M81703										◆
<b>M83723/65H</b>										
M83723/65H										◆
<b>M83723/79H,Y</b>										
M83723/79H,Y	◆									◆

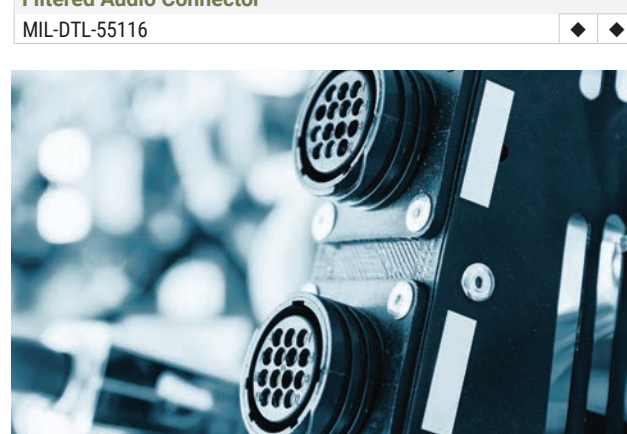
CIRCULAR CONNECTORS	Amphenol	Amphenol Fiber	Amphenol Matrix	Amphenol PCD	Aptiv (Delphi)	Conesys	Eaton Souriau	Glenair	ITT Cannon	TE Connectivity
	<b>Hermetics cont.</b>									
M83723/80H,Y	◆									◆
M83723/81H,Y	◆									◆
M83723/88H,Y	◆									◆
M83723/89H,Y	◆									◆
M83723/90H,Y	◆									◆
M83723/93H	◆									◆
M83723/94H	◆									◆
MS27034H	◆									◆
MS27469Y	◆						◆			
MS27470Y	◆						◆			◆
MS27471Y	◆						◆			◆
MS27475Y	◆						◆			
MS27476Y	◆						◆			
MS27477Y	◆						◆			
MS27478Y	◆						◆			◆
MS3113H	◆									◆
MS3114H	◆									◆
MS3132H										◆
MS3134 H										◆
MS3142 H										◆
MS3143 H										◆
MS3440 H							◆			◆
MS3442 H										◆
MS3443 H							◆			◆
MS3449 H							◆			◆
<b>MIL-DTL-22992</b>										
MS17343	◆									
MS17344	◆									
MS17345	◆									
MS17346	◆									
MS17347	◆									
MS17348	◆									
MS17349	◆						◆			
MS17350	◆						◆			
MS18062	◆									
MS90555	◆									
MS90556	◆									
MS90557	◆									
MS90558	◆									
MS90561	◆									
MS90563	◆									
MS90564	◆									
<b>MIL-DTL-26482 SERIES 1 CRIMP</b>										
MS3120	◆									◆
MS3121	◆									◆
MS3122	◆									◆
MS3124	◆									◆
MS3126	◆									◆
MS3127	◆									◆
MS3128	◆									
<b>MIL-DTL-26482 SERIES 1 SOLDER</b>										
MS3110	◆						◆			◆
MS3111	◆						◆			◆
MS3112	◆						◆			◆
MS3113 H	◆									◆
MS3114	◆						◆			◆
MS3114 H	◆									◆

CIRCULAR CONNECTORS	Amphenol	Amphenol Fiber	Amphenol Matrix	Amphenol PCD	Aptiv (Delphi)	Conesys	Eaton Souriau	Glenair	ITT Cannon	TE Connectivity
	MS3115	◆								
MS3116	◆						◆			◆
MS3180	◆					◆				
MS3181	◆					◆				
MS3440							◆			◆
MS344T2										◆
MS3443							◆			◆
MS3449							◆			◆
<b>MIL-DTL-26482 SERIES 2</b>										
MS3470			◆			◆	◆			◆
MS3471			◆			◆				◆
MS3472			◆			◆				◆
MS3474			◆			◆	◆			◆
MS3475			◆			◆	◆			◆
MS3476			◆			◆	◆			◆
<b>MIL-DTL-26500</b>										
MS24264							◆			
MS24265							◆			
MS24266							◆			
MS27034										
MS27613										
MS27614										
MS27615										
<b>MIL-DTL-27599 SOLDER</b>										
MS20026	◆									
MS20027	◆									
MS20028	◆									
MS20029	◆									
MS27334	◆									
MS27335	◆									

CIRCULAR CONNECTORS	Amphenol	Amphenol Fiber	Amphenol Matrix	Amphenol PCD	Aptiv (Delphi)	Conesys	Eaton Souriau	Glenair	ITT Cannon	TE Connectivity
<b>EN2997</b>										
EN2997XX0	◆				◆		◆	◆	◆	◆
EN2997Y1/EN2997YE1	◆				◆		◆	◆	◆	◆
EN2997XX6	◆				◆		◆	◆	◆	◆
EN2997XX7	◆				◆		◆	◆	◆	◆
<b>EN3645</b>										
EN3645?0	◆						◆			◆
EN3645?6	◆						◆			◆
EN3645?7	◆						◆			◆
<b>Filtered Audio Connector</b>										
MIL-DTL-55116		◆								
<b>MIL-DTL-38999 Series I &amp; II</b>										
MS27466	◆						◆			◆
MS27467	◆						◆			◆
MS27468	◆						◆			◆
MS27469	◆							◆		
MS27470	◆							◆		◆
MS27471	◆							◆		◆
MS27472	◆					◆	◆			
MS27473	◆					◆	◆			
MS27474	◆					◆	◆			
MS27475	◆							◆		
MS27476	◆							◆		
MS27477	◆							◆		
MS27478	◆							◆		
MS27479	◆							◆		
MS27484	◆					◆	◆			
MS27496	◆					◆				◆
MS27497	◆					◆	◆			
MS27499	◆					◆	◆			
MS27501	◆							◆		
MS27502	◆							◆		
MS27505	◆						◆			
MS27508	◆					◆	◆			
MS27510	◆							◆		
MS27511	◆							◆		
MS27512	◆							◆		
MS27513	◆					◆				
MS27656	◆						◆			
<b>MIL-DTL-38999 Series III Aluminum</b>										
M38999/9			◆	◆						
M38999/10			◆	◆						
D38999/20 F/G/W/Z/T	◆						◆	◆		◆
D38999/24 F/G/W/Z/T	◆						◆	◆		◆
D38999/26 F/G/W/Z/T	◆						◆	◆		◆
D38999/28	◆				◆		◆	◆		◆
D38999/32	◆		◆	◆			◆	◆		◆
D38999/33	◆		◆	◆			◆	◆		◆
<b>MIL-DTL-38999 Series III Composite</b>										
D38999/20 J/M	◆						◆			◆
D38999/24 J/M	◆							◆		◆
D38999/26 J/M	◆						◆	◆		◆
<b>MIL-DTL-38999 Series III Firewall</b>										
D38999/20 K/S	◆						◆			
D38999/24 K/S	◆						◆			
D38999/26 K/S	◆						◆			
<b>MIL-DTL-38999 Series III Lanyard</b>										
D38999/29	◆									
D38999/30	◆									
D38999/31							◆			◆

CIRCULAR CONNECTORS	Amphenol	Amphenol Fiber	Amphenol Matrix	Amphenol PCD	Aptiv (Delphi)	Conesys	Eaton Souriau	Glenair	ITT Cannon	TE Connectivity
<b>MIL-DTL-38999 Series IV</b>										
D38999/41 H/N/Y								◆		
D38999/43 H/N/Y								◆		◆
D38999/43 G/N										◆
D38999/45 H/N/Y								◆		◆
D38999/48 H/N/Y								◆		
<b>BACC Standards</b>										
BACC63CD	◆					◆				
BACC63CE	◆					◆				
BACC63CM	◆								◆	
BACC63CN	◆								◆	
BACC63CT	◆						◆	◆		
BACC63CU	◆						◆	◆		
BACC63DB	◆						◆	◆		
BACC63DC	◆						◆	◆		
BACC63DE			◆							
BACC63DF			◆							
BACC63DG			◆							
BACC63DH			◆							
BACC63DN	◆									
BACC63DP					◆					
BACC63ED			◆							
BACC63EE			◆							
BACC63EF			◆							
BACC63EK	◆									
BACC63EL	◆									
BACC65BP			◆							
BACC65BR			◆							
BACC65BU									◆	
BACC65BV									◆	
BACC65CA									◆	
BACC65CP									◆	
BACC66?					◆	◆	◆	◆	◆	
BAC110BC			◆						◆	
BAC110BI			◆						◆	

CIRCULAR CONNECTORS	Amphenol Nexus	Amphenol Matrix
<b>Filtered Audio Connector</b>		
MIL-DTL-55116	◆	◆



RECTANGULAR CONNECTORS	AirBorn	Amphenol	Amphenol Nexus	Amphenol PCD	Amphenol Positronic	Aptiv (Delphi)	Conesys	Eaton Souriau	Glenair	ITT Cannon	TE Connectivity	Vishay/Dale
<b>MIL-DTL-24308 &amp; Space Grade</b>												
M24308/1 & M24308/3			◆	◆				◆		◆		
M24308/2 & M24308/4			◆	◆						◆	◆	
M24308/5			◆	◆								
M24308/6 & M24308/8			◆	◆							◆	
M24308/7			◆	◆								
M24308/9			◆	◆					◆			
M24308/23 & M24308/24			◆	◆						◆	◆	
M24308/25 & M24308/26			◆	◆						◆	◆	
311P407				◆				◆		◆	◆	
311P409								◆		◆	◆	
<b>MIL-DTL-12883</b>												
M12883/40 thru M12883/55			◆									
<b>MIL-DTL-21097</b>												
M21097/11											◆	
M21097/13											◆	
M21097/14											◆	
M21097/15											◆	
M21097/16											◆	
<b>MIL-DTL-28748</b>												
M28748/7												◆
M28748/8												◆
M28748/9						◆	◆					
M28748/10						◆	◆					
<b>MIL-DTL-28804</b>												
M28804/1 thru M28804/11						◆						
<b>MIL-DTL-32139</b>												
M32139/01		◆									◆	
M32139/02		◆									◆	
M32139/03		◆									◆	
M32139/04		◆									◆	
<b>AS81659 &amp; ARINC</b>												
M81659											◆	
ARINC 404		◆								◆	◆	
ARINC 600		◆						◆		◆	◆	
<b>AS81714</b>												
M81714/1 thru M81714/12			◆									
M81714/4 & M81714/11			◆								◆	
M81714/16 & M81714/17			◆								◆	
M81714/21 & M81714/23			◆								◆	
M81714/60 & M81714/67			◆								◆	
M81714/69											◆	
<b>MIL-DTL-83513</b>												
M83513/XX												
<b>MIL-DTL-83733</b>												
M83733												
<b>EN4165</b>												
EN4165			◆									◆

MIL-DTL-55302	AirBorn	Amphenol	INCON Inc	TE Connectivity	MIL-DTL-55302	AirBorn	Amphenol	INCON Inc	TE Connectivity
M55302/21			◆		M55302/121	◆			◆
M55302/22			◆		M55302/122				◆
M55302/23				◆	M55302/123				◆
M55302/24				◆	M55302/124				◆
M55302/25				◆	M55302/125				◆
M55302/26				◆	M55302/126				◆
M55302/27				◆	M55302/127				◆
M55302/31	◆			◆	M55302/128				◆
M55302/55	◆		◆		M55302/129				◆
M55302/56	◆		◆		M55302/130				◆
M55302/57	◆		◆		M55302/138	◆		◆	
M55302/58	◆		◆		M55302/139	◆		◆	
M55302/59	◆		◆		M55302/156				◆
M55302/60	◆		◆		M55302/166		◆		
M55302/61	◆		◆		M55302/167		◆		
M55302/62	◆		◆		M553				

	Amphenol	Amphenol Fiber	Amphenol PCD	Amphenol RF	Amphenol SV	Aptiv (Delphi)	Carlisle / Tri-Star	Conesys	Delta	Eaton Souriau	Glenair	Hellermann Tyton	ITT Cannon	Molex	Panduit	Preci-Dip	TE Connectivity
<b>Backshells &amp; Accessories</b>																	
M28840						◆					◆						
M85049	◆		◆							◆	◆	◆					◆
MS25042	◆		◆					◆			◆						
MS25043	◆		◆					◆			◆						
MS27291	◆										◆						
MS27501	◆										◆						
MS27502	◆									◆	◆						
MS27510	◆										◆						
MS27511	◆										◆						
MS27512	◆										◆						
MS27558	◆										◆						
MS27559	◆										◆						
MS27657	◆										◆						
MS3057	◆										◆						
MS3180	◆		◆					◆			◆						
MS3181	◆		◆					◆			◆						
MS3186			◆								◆						
MS3420	◆										◆						
D38999/32	◆							◆		◆	◆						
D38999/33	◆							◆		◆	◆						
MS3115											◆						
<b>Coax/RF</b>																	
MIL-PRF-39012				◆	◆				◆								◆
MIL-DTL-39030					◆												◆
MIL-DTL-83517/1-9				◆													◆
MIL-DTL-83517/10																	◆
MIL-PRF-55339				◆	◆				◆								◆

	Amphenol	Amphenol Fiber	Aptiv (Delphi)	Carlisle / Tri-Star	Conesys	Eaton Souriau	Glenair	Molex	Panduit	Preci-Dip	TE Connectivity
<b>Contacts</b>											
MIL-PRF-29504	◆	◆	◆		◆	◆	◆				
AS39029	◆			◆	◆	◆	◆			◆	◆
BACC47	◆			◆	◆	◆	◆				◆
EN3155	◆			◆	◆	◆	◆				◆
<b>Sealing Plugs</b>											
MS27488						◆				◆	
<b>Terminals</b>											
M7928/1											◆
M7928/4											◆
M7928/5								◆			◆
M7928/6											◆
M7928/7											◆
MIL-S-81824/1											◆
MS17143								◆			◆
MS20659								◆	◆		◆
MS25036								◆	◆		◆
MS25274											◆
NAS 1747											◆
SAE AS83519/1											◆
SAE AS83519/2											◆
<b>Tools</b>											
AS22520											◆
AS81969	◆										◆

WIRE, CABLE & HEAT SHRINK PRODUCTS		3M Interconnect	Glenair	Hellermann Tyton	TE Connectivity
MIL-S-81824/1	Mini Seal Splices				◆
AMS-DTL-23053	Heat-shrinkable tubing	◆			◆
AR70-75	Heat-shrinkable tubing				◆
MIL-DTL-24640	Wire				◆
MIL-C-24643	Heat-shrinkable tubing				◆
MIL-C-85485	ElectroLoss FilterLine Wire & Cable				◆
MIL-PRF-46846	Heat-shrinkable tubing				◆
MIL-W-81044	SPEC 44 Wire				◆
A-A-56031 (S/S MIL-A-46864)	Adhesive, epoxy, flexible				◆
M83723/16, /27	Boots - heat shrink, strain relief, straight & right angle				◆
SAE AS31091	Boots - straight			◆	◆
SAE AS31171	Boots - heat shrink, strain relief & right angle			◆	◆
SAE AS81765	Insulating components				◆
SAE AS22759	SPEC 44 & SPEC 55 Wire				◆
AS85049	Shrink Boots		◆		
AS50151, M26482 Series II, M83723 Series III, AS81703 Series 3, AS95234	Shrink Boot Adaptors			◆	
AS83519	Heat Shrink Termination Sleeves		◆		

WIRE MANAGEMENT		Hellermann Tyton	Panduit
MS3367-1 ~ -7	Cable ties	◆	◆
MS3367-23 ~ -27	Cable ties	◆	◆
MS3367-29	Cable ties	◆	◆
MS3368-1-A, -B	Marker ties	◆	◆
MS3368-2-A, -B	Marker ties	◆	◆
MS3368-3-C	Marker ties	◆	◆
MS3368-4-D	Marker ties	◆	◆
MS3368-5-E	Marker ties	◆	◆
MS90387-1 ~ -3	Installation tools	◆	◆
MS21266	Grommet edging	◆	◆

IDENTIFICATION/LABEL		Hellermann Tyton
MIL-STD-202G method 215K, MIL-I-23053/5	SHRINKTRAK Heat Shrink Wire Markers	◆
SAE-AS81531 and Mil-Std 202G, Method 215K	TIP TAG Series	◆
	Polyester for UID Labeling	◆
	Vinyl Self Laminating	◆

FIBER OPTIC		Aptiv (Delphi)	Hellermann Tyton
M28876	MIL-C-28876	◆	◆
M83526	MIL-PRF-83526	◆	◆

ALUMINUM & MICA		BMI	Cornell Dubilier	Chemi-Con
<b>Aluminum • MIL-PRF-39018</b>				
M39018/01	CU12	◆		
M39018/01	CU13	◆		
M39018/01	CUR13	◆		
M39018/02	CU14	◆		
M39018/02	CU15	◆		
M39018/03	CU16	◆		
M39018/03	CU17	◆		
M39018/03	CUR17	◆		
M39018/04	CU71, CUR71	◆		
M39018/06	CUR91	◆		
M39018/07	CUR19	◆		
M39018/10	CUR92	◆		
<b>Aluminum • DSCC Drawings</b>				
01001	MIL-PRF-39018			◆
05018	MLP			◆
05019	MLS			◆
88022	MIL-PRF-39018	◆		
89012	MIL-PRF-39018			◆
89021	MIL-PRF-39018	◆		
<b>Mica • MIL-PRF-39001</b>				
39001/5	CMR03			◆
39001/5	CMR04			◆
39001/5	CMR05			◆
39001/5	CMR06			◆
39001/5	CMR07			◆
39001/5	CMR08			◆
<b>Aluminum • Specialized</b>				
MLSG FlatPack				◆
MLSH - Hermetic SlimPack				◆
AXLH - Axial High-temp				◆
HHT - Rugged High-temp				◆

FILM		Dearborn
<b>Film • MIL-PRF-83421</b>		
M83421/02	CRH11 ~ CRH13	◆
M83421/06	CRH31 ~ CRH35	◆
<b>Film • MIL-PRF-11693</b>		
M11693/07	CZ23/CZ24, CZR23/CZR24	◆
<b>Film • MIL-PRF-19978</b>		
M19978/1	CQ08, CQ09, CQ12, CQ13	◆
M19978/2	CQ20	◆
M19978/3	CQ72	◆
M19978/9	CQR09	◆
M19978/10	CQR12	◆
M19978/11	CQR13	◆
M19978/12	CQR19t	◆
M19978/13	CQR29	◆
M19978/14	CQR32	◆
M19978/15	CQR33	◆
M19978/16	CQR39	◆
M19978/17	CQR42	◆
M19978/18	CQR43	◆
M19978/19	CQ05	◆
M19978/20	CQ10	◆
M19978/21	CQ11	◆
M19978/22	CQR44	◆
<b>Film • MIL-PRF-39022</b>		
M39022/1	CHR09	◆
M39022/2	CHR19	◆

FILM		Dearborn
M39022/8	CHR12	◆
M39022/10	CHR10	◆
M39022/12	CHR26	◆
M39022/13	CHR27	◆
M18312/2	CH09	◆
M18312/3	CH12	◆
<b>Film • MIL-PRF-55514</b>		
M55514/9	CFR13, CFR14	◆
M55514/10	CFR15	◆
M55514/13	CFR30	◆
<b>Film • MIL-C-25</b>		
M25/4	CP53 ~ CP55	◆
<b>Film • C-18312</b>		
M18312/2	CH09	◆
M18312/3	CH12	◆
<b>Film • DSCC Drawing</b>		
88012	MIL-PRF-83421	◆
89028	MIL-PRF-39022	◆
95008	MIL-PRF-15733	◆

CERAMIC & DISC		CTS	KEMET	KYOCERA AVX	Spectrum Control	Vishay
<b>Ceramic • MIL-C-11015</b>						
	CK05		◆	◆		
	CK06		◆	◆		
	CK12		◆	◆		
	CK13		◆	◆		
	CK14		◆	◆		
	CK15		◆	◆		
	CK16		◆	◆		
	CK22	◆		◆		
	CK27	◆				
<b>Disc Capacitors • MIL-C-11015</b>						
	CK60		◆			
	CK61		◆			
	CK62		◆			
	CK63		◆			
	CK64		◆			
	CK65		◆			
	CK66		◆			
	CK67		◆			
	CK70		◆			
	CK72		◆			
	CK74		◆			
	CK75		◆			
	CK78		◆			
	CK79		◆			
	CK99			◆		
<b>Ceramic • MIL-PRF-123</b>						
M123	CKS05-06		◆	◆		
M123	CKS05-07		◆			
M123	CKS11-24			◆		
M123	CKS51-57		◆	◆		◆
<b>Ceramic • MIL-PRF-32535</b>						
M3253502	0402		◆	◆		
M3253503	0603		◆	◆		
M3253504	0805		◆	◆		
M3253505	1206		◆	◆		

CERAMIC & TANTALUM		KEMET	KYOCERA AVX	Vishay
<b>Ceramic • DSCC Drawing</b>				
03028	MIL-PRF-55681	◆	◆	◆
03029	MIL-PRF-55681		◆	◆
05001	MIL-PRF-55681			◆
05002	MIL-PRF-55681		◆	◆
05003	MIL-PRF-55681			◆
05006	MIL-PRF-55681			◆
05007	MIL-PRF-55681	◆	◆	◆
06019	MIL-PRF-123		◆	
06022	MIL-PRF-123		◆	
09023	MIL-PRF-55681		◆	
09024	MIL-PRF-55681		◆	
09025	MIL-PRF-55681		◆	
09026	MIL-PRF-55681		◆	
09027	MIL-PRF-55681		◆	
14004	MIL-PRF-55681		◆	
14005	MIL-PRF-55681		◆	
91019	MIL-PRF-123	◆		
<b>Tantalum • MIL-PRF-55365</b>				
M55365/04	CWR06			◆
M55365/04	CWR09	◆	◆	
M55365/08	CWR11	◆	◆	◆
M55365/12	CWR15		◆	
M55365/13	CWR16			◆
M55365/11	CWR19	◆	◆	
M55365/11	CWR26			◆
M55365/11	CWR29	◆	◆	

CERAMIC & TANTALUM		KEMET	KYOCERA AVX	Vishay
<b>Tantalum • MIL-PRF-39003</b>				
M39003/01	CSR13	◆		◆
M39003/02	CSR09	◆		
M39003/03	CSR23	◆		◆
M39003/04	CSR91	◆		
M39003/06	CSR33	◆		
M39003/09	CSR21	◆		◆
M39003/10	CSS13	◆		
M39003/10	CSS33	◆		
GR500	T210, T220, T240	◆		
<b>Tantalum • MIL-PRF-49137</b>				
	CX01	◆		
	CX02	◆		
	CX05	◆		
	CX06	◆		◆
	CX12	◆		
	CX16			◆
<b>Tantalum • MIL-PRF-39006</b>				
M39006/09	CLR65			◆
M39006/21	CLR69			◆
M39006/22	CLR79		◆	◆
M39006/25	CLR81		◆	◆
M39006/30	CLR90		◆	◆
M39006/31	CLR91		◆	◆
M39006/33	CLR93			◆
<b>Tantalum • DSCC Drawing</b>				
02002	MIL-PRF-55365			◆

CERAMIC & TANTALUM		KEMET	KYOCERA AVX	Vishay
02006	MIL-PRF-55365		◆	
04003	HE			◆
04021	MIL-PRF-3965			◆
04022	MIL-PRF-39006			◆
04033	MIL-PRF-3965			◆
04051	MIL-PRF-55365	◆		
04052	MIL-PRF-55365	◆		
04053	MIL-PRF-55365	◆		
05017	MIL-PRF-83500/1			◆
06013	MIL-PRF-39006/22			◆
06014	MIL-PRF-39006/25			◆
06015	MIL-PRF-39006/30			◆
06016	MIL-PRF-39006/31			◆
07016	MIL-PRF-55365	◆	◆	
09009	MIL-PRF-55365		◆	
10004	MIL-PRF-39006			◆
10011	MIL-PRF-39006-HE3			◆
11020	MIL-PRF-55365			◆
13008	MIL-PRF-55365			◆
13017	MIL-PRF-39006		◆	◆
14002	MIL-PRF-55365			◆
15005	MIL-PRF-39006			◆
95158	MIL-PRF-55365	◆	◆	◆
93026	MIL-PRF-39006			◆
<b>Tantalum • Super Tan Product</b>				
ST, STA, STE, TWA			◆	◆
T16,T18				◆

WIREWOUND & DSCC DRAWING	OHMITE	TT Electronics / IRC		Vishay Precision Group
		TT Electronics	IRC	
<b>Wirewound • MIL-R-26</b>				
RW20		◆		
RW21		◆		
RW22		◆		
RW23		◆		
RW24		◆		
RW29		◆	◆	
RW30		◆	◆	
RW31		◆	◆	
RW32		◆	◆	
RW33		◆	◆	
RW34		◆	◆	
RW35		◆	◆	
RW36		◆	◆	
RW37		◆	◆	
RW38		◆	◆	
RW39		◆	◆	
RW47		◆	◆	
RW67		◆	◆	
RW68		◆	◆	
RW69		◆	◆	
RW70		◆	◆	
RW74		◆	◆	

WIREWOUND & DSCC DRAWING	OHMITE	TT Electronics / IRC		Vishay Precision Group
		TT Electronics	IRC	
<b>Wirewound • MIL-R-26 cont.</b>				
RW78		◆	◆	
RW79		◆	◆	
RW80			◆	
RW81			◆	
<b>Wirewound • MIL-R-18546</b>				
RE60			◆	
RE65			◆	
RE70			◆	
RE75			◆	
RE77			◆	
RE80			◆	
<b>Wirewound • MIL-R-18546</b>				
RWR71			◆	
RWR74			◆	
RWR78			◆	
RWR80			◆	
RWR81			◆	
RWR82			◆	
RWR84			◆	
RWR89			◆	

WIREWOUND & DSCC DRAWING	OHMITE	TT Electronics / IRC		Vishay Precision Group
		TT Electronics	IRC	
<b>Wirewound • MIL-R-39009</b>				
RER40				◆
RER45				◆
RER50				◆
RER55				◆
RER60				◆
RER65				◆
RER70				◆
RER75				◆
<b>DSCC Drawing</b>				
90048				◆
93030				◆
97004				◆
98020				◆
98021				◆
99011				◆
14006		◆		
14007		◆		
14008		◆		
15002		◆		
15003		◆		
15004		◆		
15007		◆		
M49462			◆	

RESISTORS	TT Electronics / IRC		Vishay Precision Group
	TT Electronics	IRC	
<b>Metal Film • MIL-R-22684</b>			
RL07			◆
RL20			◆
<b>Metal Film • MIL-R-39017</b>			
RLR05			◆
RLR07			◆
RLR20			◆
RLR32			◆
<b>Metal Film • MIL-R-10509</b>			
RN50			◆
RN55			◆
RN60			◆
RN65			◆
RN70			◆
<b>Metal Film • MIL-R-55342</b>			
M55342/01 ~ /03			◆
M55342/04			◆
M55342/05			◆
M55342/06			◆
D55342/07			◆
M55342/08			◆
M55342/09			◆
M55342/10			◆
M55342/11			◆
M55342/12			◆
M55342/13			◆

RESISTORS	TT Electronics / IRC		Vishay Precision Group
	TT Electronics	IRC	
<b>Metal Film • DSCC Drawing</b>			
M32159			◆
<b>Metal Film • MIL-R-55182</b>			
RNC50			◆
RNC55			◆
RNC60			◆
RNC65			◆
RNC90			◆
RNR50			◆
RNR55			◆
RNR60			◆
RNR65			◆
RNR70			◆
RNR75			◆
<b>Current Sense • DSCC Drawing / EEE INST with Kelvin Connections</b>			
08003/303119			◆
07011/303144			◆
07012/303145			◆
<b>Current Sense • DSCC Drawing / EEE INST</b>			
06009			◆
06010			◆
06011			◆
06012			◆
<b>Current Sense Molded Flexible Terminations • DSCC Drawing/EEE INST</b>			
06003			◆

RESISTORS	TT Electronics / IRC		Vishay Precision Group
	TT Electronics	IRC	
<b>Metal Glaze Melf Resistors • DSCC Drawing</b>			
94047			◆
94048			◆
95006			◆
95011			◆
<b>Molded Flexible Terminations • DSCC Drawing / EEE INST</b>			
06020 / 303139			◆
06021 / 303140			◆
93075			◆
93076			◆
93077			◆
<b>Through Hole • DSCC Drawing / EEE INST</b>			
89039 / 303143			◆
87026 / 303143L			◆
<b>Trimmer • DSCC Drawing</b>			
87126			◆
<b>Wrap-around Surface Mount • DSCC Drawing / EEE INST</b>			
06002			◆
07024 / 303134			◆
07025 / 303135			◆
03010 / 303136			◆

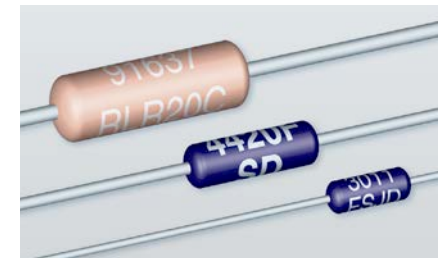
NETWORK	TT Electronics / IRC	
	TT Electronics	IRC
<b>Network • MIL-R-83401</b>		
M83401/01		◆
M83401/02		◆
M83401/03		◆
M83401/04		◆
M83401/05		◆
M83401/06		◆
M83401/07		◆
M83401/08		◆
M83401/09		◆
M83401/10		◆
M83401/13		◆
M83401/14		◆
M83401/15		◆
M83401/18		◆
M83401/19		◆
M83401/21		◆
M83401/22		◆
M83401/23		◆
M83401/24		◆
<b>Network • MIL-R-83401 • DSCC Drawing</b>		
87012		◆
87013		◆
87016		◆
87017		◆
87018		◆
87045		◆

NETWORK	TT Electronics / IRC	
	TT Electronics	IRC
<b>Network • MIL-R-83401 • DSCC Drawing</b>		
87053		◆
87067		◆
87068		◆
87071		◆
87073		◆
87074		◆

VARIABLE RESISTORS	Bourns	OHMITE
RP05 ~ RP55		◆
<b>Variable Resistors • MIL-R-22097</b>		
RJ12tt		◆
RJ22		◆
RJ24		◆
RJ26		◆
RJ50		◆
<b>Variable Resistors • MIL-R-27208</b>		
RT12		◆
RT22		◆
RT24		◆
RT26		◆

VARIABLE RESISTORS	Bourns	OHMITE
RJR24		◆
RJR26		◆
RJR50		◆
<b>Variable Resistors • MIL-R-39015</b>		
RTR22		◆
RTR24		◆

POTENTIOMETERS	Honeywell
RV6	◆
<b>Potentiometers • MIL-PRF-94/5</b>	
RV4	◆



FUSES FUSEHOLDERS & VARISTORS	EATON	Littelfuse
<b>Fuses • MIL-PRF-15160</b>		
F01A	◆	
F02A	◆	
F02B	◆	
F03A	◆	
F03B	◆	
F06A	◆	
F09A	◆	◆
F09B	◆	◆
F10A	◆	
F15A	◆	
F15BR	◆	
F16A	◆	
F16BR	◆	
F19BR	◆	
F20BR	◆	
F40A	◆	
F60C	◆	◆
F61C	◆	
F62C	◆	
F63C	◆	
F64C	◆	
F65C	◆	
F66C	◆	
FA01	◆	
<b>Fuses • MIL-PRF-23419</b>		
FM01A	◆	◆
FM02A		◆
FM04A		◆
FM07A		◆
FM08A	◆	◆
FM09A	◆	
FM09B	◆	
FM10A		◆
<b>Fuseholders • MIL-PRF-19208</b>		
FHL10G	◆	
FHL10U	◆	
FHL11G	◆	
FHL11U	◆	
FHL12G	◆	
FHL12U	◆	
FHL17G1	◆	
FHL18G1-1	◆	
FHL18G1-2	◆	
FHL18G1-3	◆	
FHL18G1-4	◆	
FHL18G1-5	◆	
FHL18G1-6	◆	
FHL18G1-7	◆	
FHL18G1-8	◆	
FHL18G1-9	◆	
FHL22W	◆	
FHL23W	◆	
FHL29G-1	◆	
FHL29G-2	◆	
FHL29G-3	◆	
FHL29G-4	◆	
FHL29G-5	◆	
FHL29G-6	◆	
FHL30G-1	◆	
FHL30G-2	◆	
FHL30G-3	◆	
FHL30G-4	◆	

FUSES FUSEHOLDERS & VARISTORS	EATON	Littelfuse
<b>Fuseholders • MIL-PRF-19208 cont.</b>		
FHL30G-5	◆	
FHL30G-6	◆	
FHL57G	◆	
FHN19G	◆	
FHN20G	◆	◆
FHN23W	◆	
FHN26G1	◆	
FHN26G2		◆
FHN26W		◆
FHN31G1	◆	
FHN42W	◆	
FHN55W	◆	◆
<b>Varistors • MIL-R-83530</b>		
M83530/1		◆
87063-001 ~ 052		◆
90065-012 ~ 022		◆

INDUCTORS	Delevan	Gowanda	Vanguard Electronics
<b>MIL-PRF-15305</b>			
MS14046	◆	◆	
MS14052	◆	◆	
MS18130	◆	◆	
MS21422	◆	◆	◆
MS75008	◆	◆	
MS75083	◆	◆	
MS75084	◆	◆	
MS75085	◆	◆	
MS75087	◆	◆	
MS75088	◆	◆	
MS75089	◆	◆	
MS75101	◆	◆	
MS75103	◆	◆	
MS90538	◆	◆	
MS90539	◆	◆	
MS90540	◆	◆	
MS90541	◆	◆	
MS90542	◆	◆	
MS91189	◆	◆	
<b>MIL-PRF-83446</b>			
M83446	◆	◆	◆
<b>MIL-PRF-39010</b>			
M39010/01	◆	◆	
M39010/02	◆	◆	
M39010/03 ~ /10	◆	◆	
<b>MIL-PRF-27</b>			
M27/356			◆
M27/367	◆	◆	
M27/368	◆	◆	
M27/370	◆	◆	
M27/372			◆
<b>TRANSFORMERS</b>			INRCORE
<b>M21038</b>			
M21038/27z			◆

FILTERS	CTS	Gowanda	KYOCERA AVX	Spectrum Control
<b>MIL-PRF-15733</b>				
M15733/23				◆
M15733/24				◆
M15733/25				◆
M15733/26				◆
M15733/27				◆
M15733/28				◆
M15733/28	◆			◆
M15733/33	◆			◆
M15733/34				◆
M15733/38	◆			◆
M15733/39				◆
M15733/40				◆
M15733/43	◆			◆
M15733/44	◆			◆
M15733/46	◆			◆
M15733/48	◆			◆
M15733/49	◆			◆
M15733/51	◆			◆
M15733/54				◆
M15733/56				◆
M15733/57				◆
M15733/58				◆
M15733/61	◆			◆
M15733/62	◆			◆
M15733/66	◆			◆
M15733/67				◆
<b>MIL-PRF-28861</b>				
M28861/01			◆	◆
M28861/02				◆
M28861/03				◆
M28861/04			◆	
M28861/05			◆	◆
M28861/12		◆	◆	
<b>EMI Filters</b>				
M28861		◆	◆	◆
M15733	◆			◆

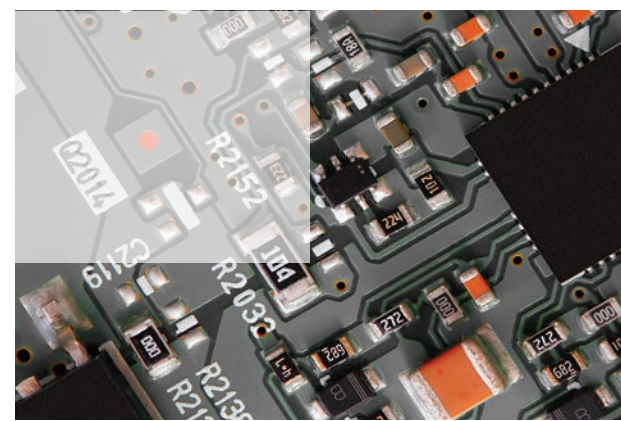


DISCRETE SEMICONDUCTORS	Bourns	EATON	Littelfuse/IXYS	Nexperia	ROHM Semiconductor	Toshiba	TT Electronics / Semel	Vishay	VPT Components
<b>Diodes</b>									
Diode Arrays		◆	◆				◆		
Schottky				◆	◆	◆	◆	◆	◆
Silicon Carbide			◆		◆			◆	
Small Signal					◆	◆	◆	◆	◆
TVS	◆	◆	◆	◆	◆	◆	◆	◆	◆
Zener				◆	◆		◆	◆	◆
<b>IGBTs</b>									
Discrete IGBTs					◆	◆			
IGBT Modules			◆				◆	◆	
<b>MOSFETs</b>									
High-voltage			◆		◆	◆	◆	◆	
Low-voltage				◆	◆	◆	◆	◆	
Modules			◆				◆	◆	
Silicon Carbide (SiC)			◆		◆	◆			
Gallium Nitride (GaN)				◆					
Voltage Regulators				◆			◆	◆	
<b>Rectifiers</b>									
Rectifiers	◆			◆		◆	◆	◆	
Schottky Rectifiers						◆	◆	◆	◆
SCRs			◆					◆	◆
◆ MIL-PRF-19500									

SWITCHES	Honeywell
<b>Basic Switch</b>	
M8805/90	◆
MS16106	◆
MS25008	◆
MS25253	◆
MS25383	◆
MS27216	◆
MS27717	◆
MS27718	◆
MS27719	◆
MS27720	◆
MS27721	◆
<b>Enclosed Switch MICRO SWITCH™</b>	
M8805/55	◆
<b>Environmentally Sealed Switch</b>	
M8805/65	◆
MS16106	◆
MS21320	◆
MS21321	◆
MS24420	◆
MS27994	◆
<b>Large Basic MICRO SWITCH™</b>	
M8805/1	◆
<b>Limit Switch</b>	
MS24594	◆
<b>Pressure Switch • MIL-PRF-8805</b>	
1HPAB1	◆
1HPAC1	◆
1HPAR1	◆

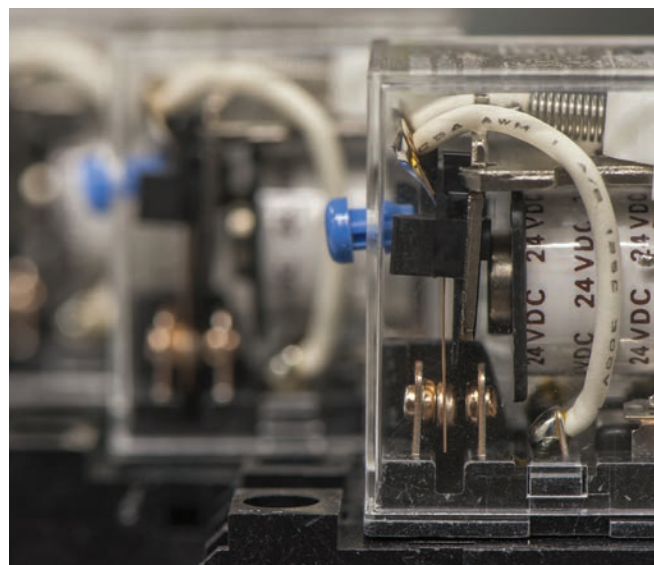
DISCRETE SEMICONDUCTORS	Bourns	EATON	Littelfuse/IXYS	Nexperia	ROHM Semiconductor	Toshiba	TT Electronics / Semel	Vishay	VPT Components
<b>Transistors</b>									
Bi-Polar				◆	◆	◆	◆	◆	◆
Small Signal				◆	◆	◆	◆	◆	◆
<b>Silicon Carbide</b>									
Schottky Diode			◆		◆	◆		◆	
MOSFETs			◆		◆	◆	◆		
Modules				◆					
<b>Logic ICs</b>									
Control Logic				◆	◆	◆			
I/O Expansion Logic				◆	◆	◆			
Analog				◆	◆	◆			
Interface Logic				◆	◆	◆			

SWITCHES	Honeywell
<b>Sealed Switch</b>	
M5594	◆
M8805/80	◆
MS21320	◆
MS21321	◆
MS24331	◆
MS24420	◆
MS25011	◆
<b>Subminiature Basic Switch</b>	
M8805/106	◆
M8805/109	◆
M8805/23	◆
MS24547	◆
MS25085	◆



SEALED TOGGLE SWITCH		C&K	Honeywell
M5594/1			◆
M5594/2			◆
M5594/3			◆
M5594/6			◆
M8805/26			◆
M8805/92			◆
M8805/98			◆
MS24523			◆
MS24524			◆
MS24525			◆
MS24658			◆
MS24659			◆
MS24660			◆
MS27406			◆
MS27407			◆
MS27408			◆
MS27409			◆
MS27716			◆
MS27717			◆
MS27718			◆
MS27719			◆
MS27720			◆
MS27721			◆
MS27722			◆
MS27723			◆
MS27724			◆
MS27734			◆
MS27735			◆
MS27736			◆
MS27737			◆
MS27738			◆
MS27739			◆
MS27753			◆
MS27754			◆
MS27781			◆
MS27782			◆
MS27783			◆
MS27784			◆
MS27785			◆
MS27786			◆
MS27787			◆
MS27788			◆
MS27789			◆
MS27790			◆
MS27793			◆
M83731/9-211		◆	
M83731/9-231		◆	
M83731/9-261		◆	
M83731/9-271		◆	
M83731/9-311		◆	
M83731/9-341		◆	
M83731/10-211		◆	
M83731/10-231		◆	
M83731/10-261		◆	
M83731/10-271		◆	
M83731/10-311		◆	
M83731/10-321		◆	
M83731/10-331		◆	
M83731/10-341		◆	
M83731/10-351		◆	
M83731/9-212		◆	
M83731/9-232		◆	
M83731/9-262		◆	

SEALED TOGGLE SWITCH		C&K	Honeywell
M83731/9-272		◆	
M83731/9-312		◆	
M83731/9-342		◆	
M83731/10-212		◆	
M83731/10-232		◆	
M83731/10-262		◆	
M83731/10-272		◆	
M83731/10-312		◆	
M83731/10-322		◆	
M83731/10-332		◆	
M83731/10-342		◆	
M83731/10-352		◆	
M83731/13-211		◆	
M83731/13-231		◆	
M83731/13-261		◆	
M83731/13-271		◆	
M83731/13-311		◆	
M83731/13-341		◆	
M83731/14-211		◆	
M83731/14-231		◆	
M83731/14-261		◆	
M83731/14-271		◆	
M83731/14-311		◆	
M83731/14-321		◆	
M83731/14-331		◆	
M83731/14-341		◆	
M83731/14-351		◆	
M83731/15-211		◆	
M83731/15-231		◆	
M83731/15-261		◆	
M83731/15-271		◆	
M83731/15-311		◆	
M83731/15-341		◆	
M83731/16-211		◆	
M83731/16-231		◆	
M83731/16-261		◆	
M83731/16-271		◆	
M83731/16-311		◆	
M83731/16-321		◆	
M83731/16-331		◆	
M83731/16-341		◆	
M83731/16-351		◆	



RELAYS		Amphenol PCD	TE Connectivity
NASA S-311-P-754	Relays		◆
MIL-R-39016	Low power Emech		◆
MIL-R-5757	Low power Emech		◆
MS27245	Low power Emech		◆
MS27247	Low power Emech		◆
MS27418			◆
M83726/28,29,30,31			◆
MIL-PRF-28750/5	Solid state		◆
MIL-PRF-28750/6	Solid state		◆
MIL-PRF-28750/7	Solid state		◆
MIL-PRF-28750/9	Solid state		◆
MIL-PRF-28750/10	Solid state		◆
MIL-PRF-28776	Hybrid		◆
MIL-PRF-6106	Contactors		◆
MIL-PRF-6106/19	Contactors		◆
MIL-PRF-83536	Low power Emech		◆
MS24185	Contactors		◆
MS27750	Contactors		◆
AN3303-2	Contactors		◆
AN3308-2	CII Contractors		◆
AN3320-1	CII Contractors		◆
AN3324-1	CII Contractors		◆
MIL-R-83725	High power		◆
MIL-R-83726/13	Hybrid & solid state time delay relays		◆
MIL-DTL-12883		◆	◆
M39016			◆

CIRCUIT BREAKERS		Sensata Airpax
MIL-PRF-39019		◆

SENSORS		Honeywell
<b>Precision Thermal Sensors • MIL-PRF-24236-819-75</b>		
M24236/1-001 ~ M24236/1-1810		◆
<b>Proximity Sensors</b>		
300 FW	MIL-STD-810B	◆
21 FW	MIL-STD-461E	◆
23 FW	MIL-STD-461E	◆
<b>Resistive Optical</b>		
M39002/01		◆
<b>Resolvers • RTCA DO-160D</b>		
Cased - Brushless Dual Speed		◆
Cased - Brushless Single Speed		◆
Pancake - Brushless Multi-Speed		◆
<b>Variable Reluctance Speed Sensors • MIL-STD-202F, Method 204D</b>		
VRS General Purpose		◆
VRS Hazardous Location		◆
VRS High Output		◆
VRS High Resolution		◆
VRS Power Output		◆

THERMOSTATS • BASIC SWITCH		Honeywell
3000		◆
3153		◆
3200		◆
3500		◆
3MS1		◆



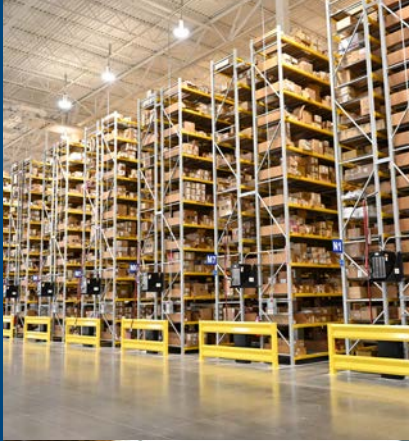


The IP&E Specialist

## Why Buy from the Specialist in Electronic Component Distribution?

Founded in 1971, TTI has steadily grown to become the world's leading interconnect, passive, electromechanical and discrete component distributor in the industry.

The company was founded on the premise that passive component purchasing could be made more efficient by offering product specialization, customer-driven service, and proprietary supply chain solutions – and do it all with secure 24/7 access.



## Knowledgeable Product Experts

Specialization allows TTI product managers to provide much better product insight to support your manufacturing from design through production. TTI Specialists' commitment to our customers is key to our continued success.

## Broader and Deeper Inventories

TTI maintains extensive component inventories, stocking more than 500,000 part numbers in North America and over 850,000 globally – that's more interconnect, passive, electromechanical and discrete inventory available than from any other source.

## AIM – Advanced Inventory Management Platform

TTI's proprietary supply chain system is specifically designed for managing IP&E products and partnerships with premier manufacturers. This allows us to provide the BOM coverage necessary to deploy comprehensive solutions that reduce total cost of ownership and mitigate line down risk.

## QUALITY AND RELIABILITY

TTI is the first distributor to have all global warehouse locations ISO registered and currently are certified to ISO 9001 with AS9100C and ISO 14001 in North America, ISO 9001, EN 9100, ISO 14001 and EN 9120 in TTI Europe and ISO 9001 in TTI Asia.

Year after year, customers rate our inventory availability, on-time delivery and accuracy among the very best in the industry – call your local TTI Specialists at 1.800.CALL.TTI and discover why.

