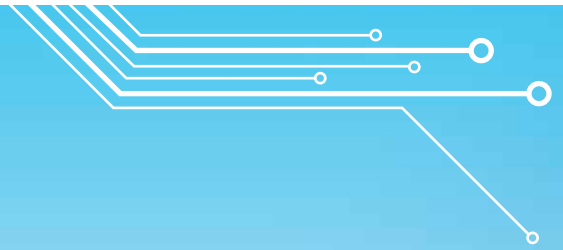




# TE Connectivity General Purpose Relays

## Product Line Card



Authorized  
Distributor



TE Connectivity (TE) offers the broadest range of relays and contactors in the world, having extensive capabilities in the design and manufacture of general purpose relays as well as those designed for high performance applications. The products listed in this line card represent only a sampling of TE general relay products and technology – contact The Specialists at TTI to find your relay solution.

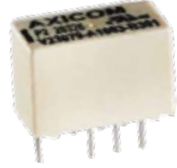
**Reach your local sales team at 1.800.CALL.TTI**

# TE Connectivity General Purpose Relays



## IM Series Signal Relay

- 2A-5A Ratings
- 1 / 2 Form A/B/C
- 1.5 – 3kV Contact-to-coil Dielectric
- 50 to 200mW Coil
- Monostable or Bistable (Latching)
- THT and SMT Versions



## P2 Series Signal Relay

- 2A-5A Ratings
- 2 form C
- 1.5kV Contact-to-coil Dielectric
- 70 to 140mW Coil
- Monostable or Bistable (Latching)
- THT and SMT Version



## PCJ Series Low Power Relay

- 3A-5A Ratings
- Monostable 1 Form A
- 4kV Contact-to-coil Dielectric
- 200mW Coil



## T77/OJ Series Low Power Relay

- 3A-12A Ratings
- Monostable 1 form A
- 4kV Contact-to-coil Dielectric
- 200mW or 450mW Coil
- OJT Inrush Version with TV-5 Rating



## RZ/RT Series Power Relay

- 12A-16A
- 1 / 2 Form A/C
- 5kV Dielectric Rating, 10mm Coil-contact Spacing, Meets Reinforced Insulation
- 400mW Coil Power
- Monostable or Bistable (Latching)
- High Temp/Inrush Versions Available



## T9A/T9E Series High Power Relay

- 30A-35A Ratings
- Monostable 1 Form A/B/C
- 2.5kV Contact-to-coil Dielectric
- 6kV Surge Contact-to-coil
- 900mW or 1W Coil
- THT or Panel Mount
- QC Terminal Option
- High Endurance and 30A Rated Form B Versions Available



## T92 Series High Power Relay

- 30A-40A Rating, No Contact
- Monostable 2 Form A/C
- 4kV Contact-to-coil Dielectric
- 4W
- THT or Panel Mount
- QC and Screw Terminal Option



## SNR Series Slim Power Relay

- 1 Form A and 1 Form C, 6 A Relay
- Only 5 mm Wide
- Flat Pack Version Available
- Sensitive Coil 170 mW
- Strong Coil Pins for DIN-rail Socket
- Allows High Function/Packaging Density
- AgNi, AgSnO and AgSnO Gold Plated Contact Versions



## SR4 Series Force Guided Relay

- 4 Pole Relay with Force Guided Contact According to EN 50205
- 8 A Rated
- Many DC Coil Voltages from 5 to 110 VDC
- Compact Design and Space Efficient
- AgSnO Contacts



## PT Series Panel Plug-in Relay

- 2 pole 12 A, 3 pole 10 A, 4 pole 6 A Form C Contacts
- Switching Power Up to 3,000 VA
- Relay height 29 mm
- Mechanical Indicator, Optional LED and Protection Diode
- Manual Test Button, Optionally Lockable
- White Marking Tabs
- Several Socket Models Available with Modules Providing the Additional Different Features



## KUP Series Panel Plug-in Relay

- AC Coils: 5 to 240 VAC, 50/60 Hz; DC Coils: 6 to 110 VDC
- Contact Arrangements of 1 Form X, 1 to 3 Form A and 1 to 4 Form C
- Wide Selection of Termination and Mounting Styles
- PC Terminals Available
- Push-to-test Button and Indicator Lamp Options
- Sockets Available for Panel, DIN-rail or PCB Mounting



## W28 Circuit Breaker

- Current Ratings from 0.25A to 20A
- 1 pole with QC Terminals, Push to Re-set or Switchable Rocker Functionality
- 1,500V Dielectric Rating
- Up to 32VDC and/250VAC Operating Voltage
- 1000A Interrupt Capacity
- Labor-saving Snap-in Panel Mounting
- Size: 14mm x 16 x 39
- UL, CSA, VDE, CCC Remove

TE Connectivity and TE connectivity (logo) are trademarks