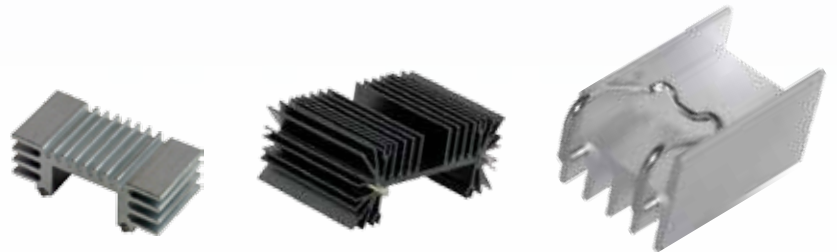
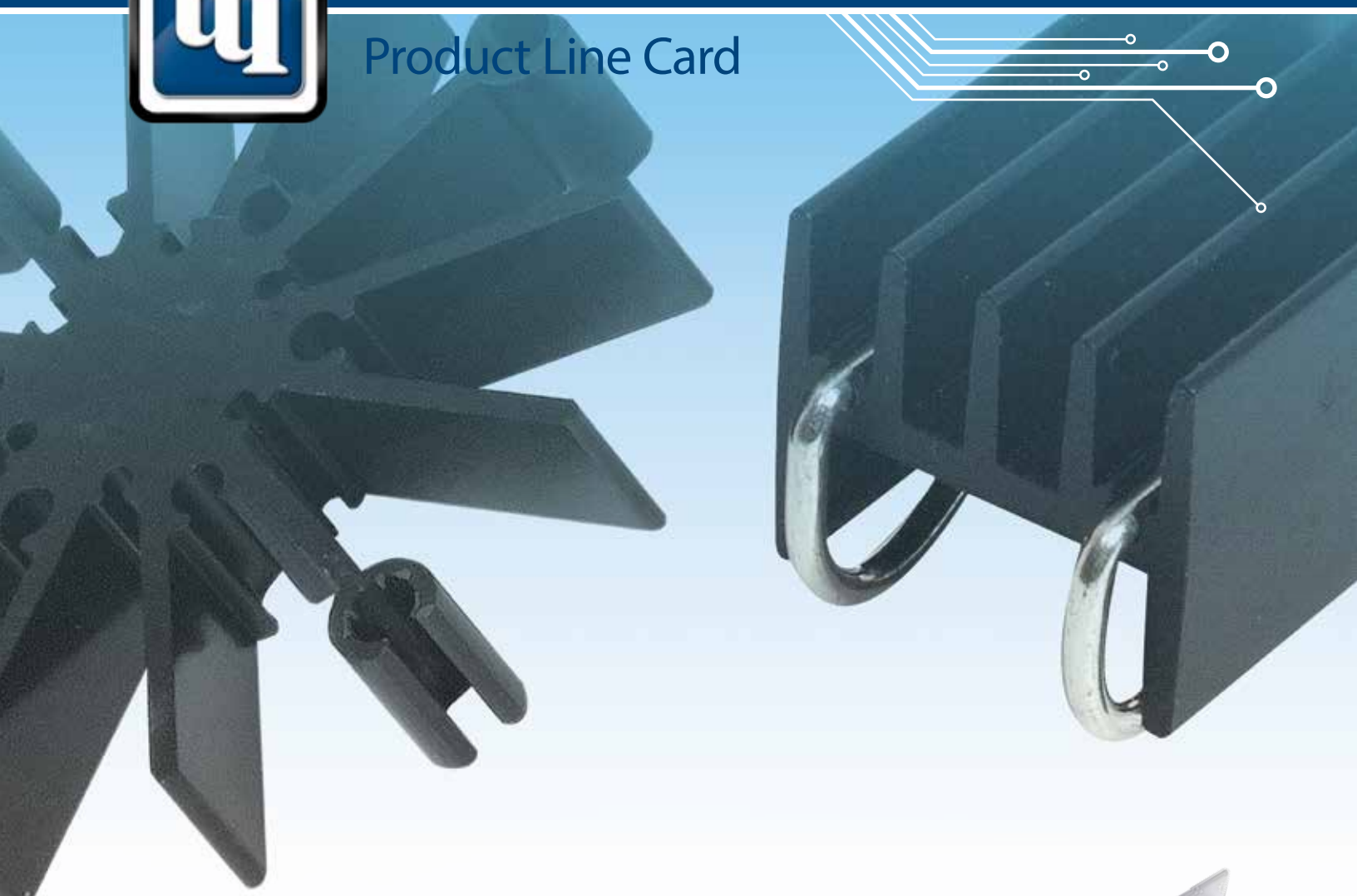




Ohmite Heat Sink

Product Line Card



Ohmite engineers have designed and tested thermal solutions in the most common industry packages – now that technology is on the shelf and ready to ship from TTI. In addition to a full range of standard designs and packages, Ohmite produces modified standard components and full custom thermal solutions.

Reach your local sales team at 1.800.CALL.TTI



TTI and Ohmite are proud to offer a broad line of highly efficient thermal solution options. With additional fins for increased surface area and Ohmite's self-aligning clip/cam attachment system, these heat sinks provide superior performance, require fewer parts in assembly, and reduce manufacturing costs thanks to the minimal number of components required per finished assembly. Your local TTI Specialist has inventory and more information.

Unique Clip/Cam System – Safer, Faster, More Efficient Simply Clip it and Sink it



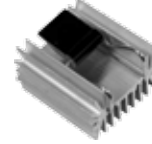
C Series

- TO-126, TO-220,
TO-247, and TO-264
- No tool, Camming Clip System
 - Mount up to Three Devices
 - Constant Repeatable Pressure



W Series

- TO-220 and TO-247
- No screw, Clip System
 - Spring Clip Delivers Constant Repeatable Pressure



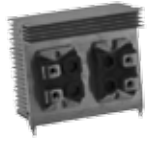
R2 Series

- TO-220, TO-247, and TO-264
- Cam Lock for TO Devices
- No tool, Camming Clip
 - Increased Surface Area
 - Constant Clip Pressure
 - Available in Black Anodized or Degreased Finish



M Series

- TO-220, TO-247, and TO-264
- Multiple Device Heatsink
- Matrix Clip System
 - Maximum Repeatability; Constant Spring Force
 - Mount up to Four Devices per Heatsink
 - Black Anodized or Degreased Finish



C-60/B-60 Series

- TO-247 and TO-264
- Clip and Screw Mount
- Modular System Including up to Two Extrusions and 60mm Fan Mounting
 - Multiple Devices on a Single Extrusion
 - Modular Systems can be Built to Customer Specifications



C-40 Series

- Clip Mounting for TO-227, TO-247, and TO-264
- Modular System with Choice of Clips
 - Multiple Devices on a Single Extrusion
 - Customizable System Can Include a 40mm Fan
 - Alternate Extrusion Lengths

Traditional Mount Heat Sinks



D Series

- TO-252, TO-263, and TO-268
- Vertical/Horizontal Mount
- Increased Surface Area Over Standard Stamped Heatsinks
 - Extruded Heat Sink Body



F and R Series

- TO-218, TO-220, and TO-247
- Vertical Mounting with Solderable Pins
 - Thermal Resistance as low as 3°C/W
 - Black Anodized



VM Series

- TO-220, TO-247, and TO-264
- Vertical/Horizontal Mount
- Wide-mounting Channel for Larger Devices
 - Black Anodized for Maximum Thermal Performance



CSM Series

- TO-220
- Economically Priced
 - Five Configurations



E Series

- Compatible with TO-220
- Available in Multiple Heights
 - Thermal Resistance as low as 7.4 °C/W
 - Black Anodized and Degreased Finish



S Series

- LED Star Package
- Multiple Extrusion Lengths
 - Available in Black Anodized or Degreased Finish



SV Series

- LED Module Heatsink
- Configurable and Scalable to Application Needs
 - Customizations Can Include: Length, Finish, Mounting Holes and More



AH Series – Customs

- Custom Extrusion Heatsinks
- Multiple Surface Finishes Available
 - Modifications Available: Screw Holes, Bolt Patterns and Milling Per Customer Specifications



CP4 Series Chillplate

- Four Pass Watercooled Heatsink
- Cooper Tubing with Aluminum Base
 - Design Flexibility; Custom Lengths and Mounting Patterns can be Specified