



Innovative Solutions for Material Handling

TE Connectivity (TE) is your material handling solution provider for electromechanical and electronic components. Whether you are designing a new system or retrofitting an existing system, this solutions guide will help you select the required components with easy access to additional online information through te.com. TE's reliable, quick to install and industry-proven innovative product solutions may help you save on system maintenance costs and downtime.

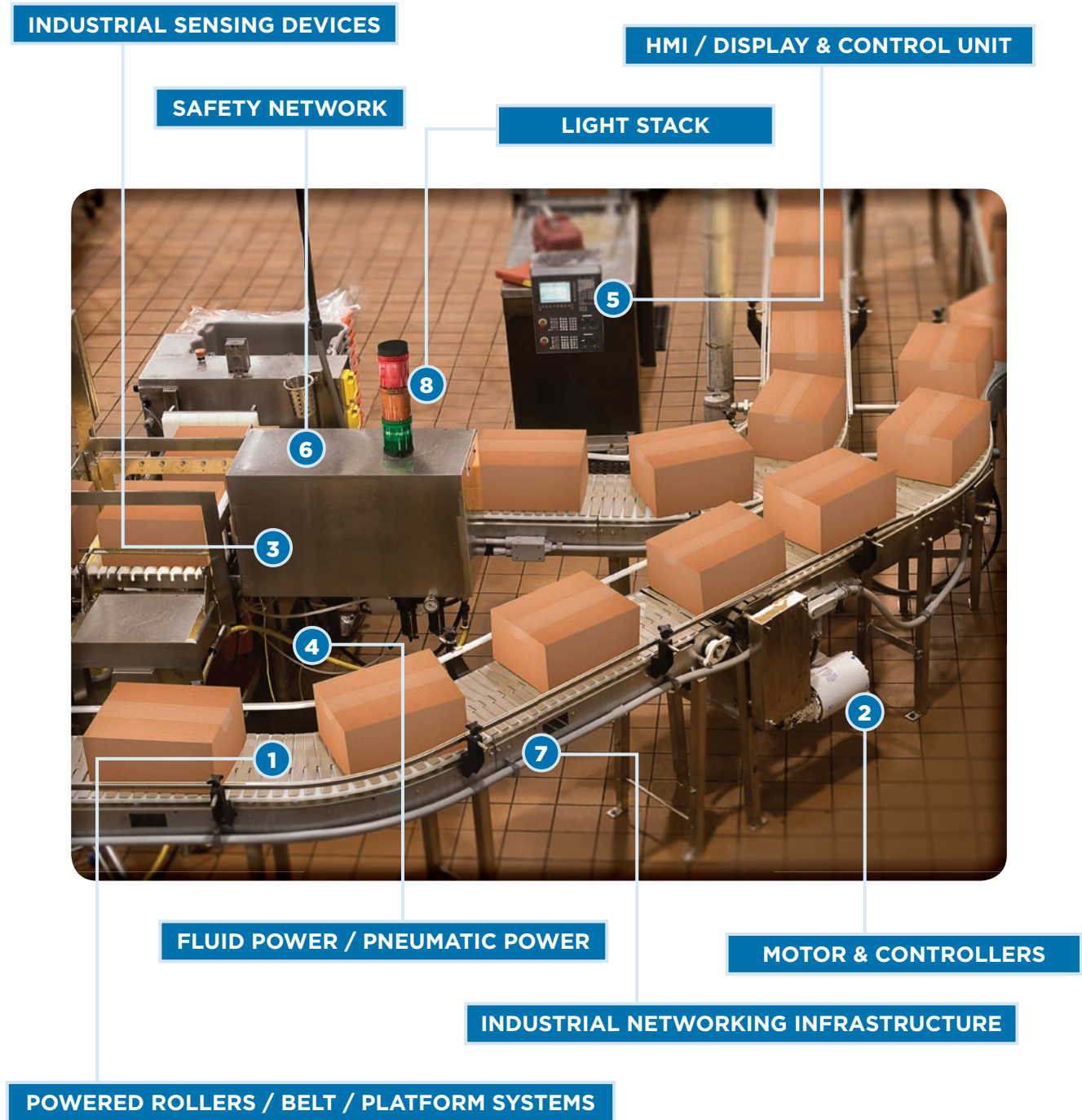


The Specialist in Electronic
Component Distribution



Authorized Distributor

TE offers solutions for all of your material handling design needs.



Design Navigator

Get more information on te.com by clicking on the product names below.

Max Current Rating (A) ¹	High Vibration Performance	Particle & Liquid Sealing	Environmental Corrosion Protection	Protection Against Mechanical Shock	Thermal Performance	Power & Signal Combined	Durable in Harsh Environments	Quick Connect/Disconnect	Speed & Determinism
-------------------------------------	----------------------------	---------------------------	------------------------------------	-------------------------------------	---------------------	-------------------------	-------------------------------	--------------------------	---------------------

Standards

Category	Product Name	Max Current Rating (A)	High Vibration Performance	Particle & Liquid Sealing	Environmental Corrosion Protection	Protection Against Mechanical Shock	Thermal Performance	Power & Signal Combined	Durable in Harsh Environments	Quick Connect/Disconnect	Speed & Determinism	Standards	
1	POWERED ROLLERS / BELT / PLATFORM SYSTEMS												
	AMPMODU Board-to-Board & Wire-to-Board Connectors	1 to 3	●						●	●		UL, CSA	
	Circuit Protection Devices	15	●			●	●					UL, CSA, TUV	
	Dynamic Series Wire-Applied Connectors	65	●			●	●					UL, RU, CSA, TUV	
	Eurostyle Terminal Blocks	125	●			●	●					RU, CSA, VDE	
	M8/M12 Industrial Cordsets & Connectors	5.0	●	●	●	●	●		●	●	●	UL, CSA	
Mini-Universal MATE-N-LOK Wire-Applied Connectors	11.2		●			●	●		●		UL, CSA, VDE (250V Max)		
Signal Double Lock Wire-Applied Connectors	3.0					●			●		UL, CSA, VDE		
2	MOTOR & CONTROLLERS												
	AMPLIMITE D-subminiature Connectors	7.5	●		●	●	●	●	●	●		UL, CSA	
	AMPMODU Board-to-Board & Wire-to-Board Connectors	1 to 3	●			●	●		●	●		UL, CSA	
	Cable Assemblies ²	N/A	●	●	●	●	●	●	●	●	●	UL, CSA, VDE	
	CHAMP Board-to-Board & Wire-to-Board Connectors	1.0	●			●	●					UL, CSA, SCSI	
	Circuit Protection Devices	15	●			●	●					UL, CSA, TUV	
	Circular Plastic Connectors (CPC)	60	●	●		●	●	●	●			UL, CSA, VDE	
	Corcom Power Line Filters	Refer to the table below for product details										UL, CSA, VDE	
	DIP Switches	0.1		●		●	●						N/A
	Dynamic Series Wire-Applied Connectors	65	●			●	●						UL, RU, CSA, TUV
	Heavy Duty Connectors (HDC)	350	●	●	●	●	●	●	●	●	●		UL, CSA, SEV, VDE, DIN
	Industrial Ethernet Products	0.5	●	●	●	●	●		●	●	●		UL, CSA
	Industrial Mini I/O Connector System	0.5	●			●	●			●	●		N/A
	Mini-Universal MATE-N-LOK Wire-Applied Connectors	11.2		●			●	●		●			UL, CSA, VDE (250V Max)
	Motorman Hybrid I/O Connectors	20	●	●		●	●		●	●	●		UL, CSA, VDE, Cat5e
	PLASTI-GRIP Terminals & Splices	N/A											N/A
	Printed Circuit Board (PCB) Relays	35		●									RU, CSA, UL, TUV, SEMCO, CQC, Industry*
RJ45 Modular Jacks & Plugs	1.5	●			●	●			●	●		TIA-1096-A	
Terminal Blocks	30				●	●						RU, CSA	
Terminals & Splices	30	●	●	●	●	●	●	●	●	●		UL, CSA, Industry*	
USB Connectors	1.8	●	●		●	●	●	●	●	●		Industry*	
3	INDUSTRIAL SENSING DEVICES												
	AMPLIMITE D-subminiature Connectors	7.5	●		●	●	●	●	●	●		UL, CSA	
	Circular Plastic Connectors (CPC)	60	●	●		●	●	●	●	●		UL, CSA, VDE	
	Industrial Ethernet Products	0.5	●	●	●	●	●		●	●	●	UL, CSA	
	Industrial Mini I/O Connector System	0.5	●			●	●			●	●	N/A	
	M8/M12 Industrial Cordsets & Connectors	5.0	●	●	●	●	●		●	●	●	UL, CSA	
4	FLUID POWER / PNEUMATIC POWER												
	AMPLIMITE D-subminiature Connectors	7.5	●		●	●	●	●	●	●		UL, CSA	
	Circular Plastic Connectors (CPC)	60	●	●		●	●	●	●	●		UL, CSA, VDE	
	Corcom Power Line Filters	Refer to the table below for product details										UL, CSA, VDE	
	Dynamic Series Wire-Applied Connectors	65	●			●	●					UL, RU, CSA, TUV	
	Heavy Duty Connectors (HDC)	350	●	●	●	●	●	●	●	●	●		UL, CSA, SEV, VDE, DIN
	Industrial Ethernet Products	0.5	●	●	●	●	●		●	●	●		UL, CSA
	M8/M12 Industrial Cordsets & Connectors	5.0	●	●	●	●	●		●	●	●	UL, CSA	
5	HMI / DISPLAY & CONTROL UNIT												
Refer to the Innovative Solutions for Industrial Control guide for information on products included in this subsystem													
6	SAFETY NETWORK												
	Force Guided Relays	8.0		●								RU, VDE, TUV, CQC, Industry*	
	Knobs	N/A				●			●			N/A	
	M8/M12 Industrial Cordsets & Connectors	5.0	●	●	●	●	●	●	●	●		UL, CSA	
Switches	20		●	●	●	●	●	●	●	●		UR, CSA, VDE, UL	
7	INDUSTRIAL NETWORKING INFRASTRUCTURE												
	AMPLIMITE D-subminiature Connectors	7.5	●		●	●	●	●	●	●		UL, CSA	
	Cable Assemblies ²	N/A	●	●	●	●	●	●	●	●	●	UL, CSA, VDE	
	Circular Plastic Connectors (CPC)	60	●	●		●	●	●	●	●		UL, CSA, VDE	
	Industrial Ethernet Products	0.5	●	●	●	●	●		●	●	●	UL, CSA	
	Industrial Mini I/O Connector System	0.5	●			●	●			●	●	N/A	
	M8/M12 Industrial Cordsets & Connectors	5.0	●	●	●	●	●		●	●	●	UL, CSA	
	USB Connectors	1.8	●	●		●	●	●	●	●	●	Industry*	
8	LIGHT STACK												
	AMPLIMITE D-subminiature Connectors	7.5	●		●	●	●	●	●	●		UL, CSA	
	Circular Plastic Connectors (CPC)	60	●	●		●	●	●	●	●		UL, CSA, VDE	
	M8/M12 Industrial Cordsets & Connectors	5.0	●	●	●	●	●		●	●	●	UL, CSA	


CORCOM EMI/RFI POWER LINE FILTERS				
Series	Type	Type	Rated Current / Voltage (max)	Agency Approvals
FC Series	Single Phase	RFI Filter for Frequency Converters	6 - 50A / 250 VAC	UL
K Series		General Purpose RFI Filter	1 - 60A / 250 VAC	UL, CSA, VDE
AYC Series	Three Phase	WYE or Delta RFI Power Line Filter	16 - 200A / 480 VAC / 277 VAC	UL
BCF Series		Compact Delta RFI Filter for universal applications	7 - 180A / 480 VAC / 277 VAC	UL, CSA, VDE

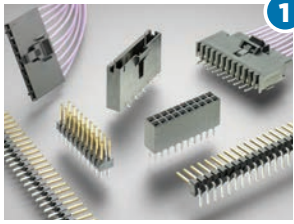
¹ May vary based on application and product selection
² Solves the same problems as the applied interconnect
 UL - UL Listed
 RU - Recognized Under
 CSA - Canadian Standards Association
 * Industry - Meets product specific industry standards (see product page on te.com for more detail)

For a complete list of TE's Corcom EMI/RFI filters, visit: www.corcom.com



Featured Products

Click on the links below and visit te.com for further information 

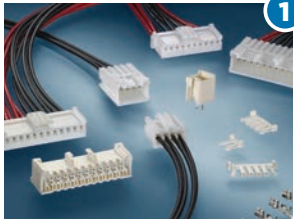


1

AMPMODU Board-to-Board & Wire-to-Board Connectors

- Achieve high vibration performance and reliability with polarized latching receptacles
- Reduce termination time with optional insulation displacement contacts (IDC)
- Satisfy a broad range of signal needs with easy application and competitively priced diverse portfolio

[Website](#)
[Catalog](#)
[Quick Reference Guide I](#)
[Quick Reference Guide II](#)

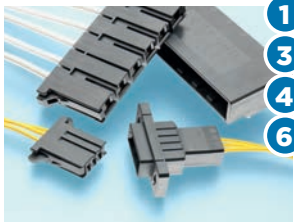


1

Signal Double Lock Wire-Applied Connectors

- Achieve a clean external surface with interior locking feature
- Compatible with high temperature solder processes and conformal coatings
- Support high volume manufacturing with polarization pegs and color coded housings

[Website](#)
[Catalog](#)
[Quick Reference Guide](#)



1

3

4

6

Dynamic Series Wire-Applied Connectors

- Suitable for low signal to high power applications with a broad range of versatile contacts
- Save time and money with a centralized modular wiring system
- Prevent mismatching with keyed housings

[Website](#)
[Catalog](#)
[Quick Reference Guide](#)



1

3

4

6

7

8

M8/M12 Industrial Cordsets & Connectors

- Enable equipment interoperability through use of standard industrial interfaces
- Industrial Ethernet solutions ranging from 100Mb through 10Gb speeds
- Improve field termination time using factory made overmolded cable assemblies

[Website](#)



2

5

RJ45 Modular Jacks & Plugs

- Reduce electrical noise and gain up to Cat 5e performance
- Gain additional PCB space with low profile and narrow housing design
- Suitable for a broad range of applications with diverse product configurations

[Website I](#)
[Website II](#)
[Catalog I](#)
[Catalog II](#)
[Quick Reference Guide](#)



2


5

Terminals & Splices

- Reliable in thermally diverse applications due to high quality crimp / brazed seam
- Improve productivity and reliability through quick connection design
- Gain design flexibility and ease of maintenance with broad portfolio

[Website](#)
[Catalog](#)
[Quick Reference Guide](#)
[Product Presentation](#)

Featured Products

Click on the links below and visit te.com for further information 



2
5

USB Connectors

- Support data transfer rates of standard USB 2.0 or the 10 times faster USB 3.0
- Optimize power efficiencies with improved device interaction and charging time
- Standard and customized styles and orientations available

[Website I](#)
[Website II](#)
[Quick Reference Guide](#)
[Product Presentation](#)
[Video](#)



2
4
5

Heavy Duty Connectors (HDC)

- Lower applied cost with quick and easy assembly options
- Gain machine configuration flexibility by combining power, signal and data circuits
- Withstand severe environmental conditions with IP68 configuration options

[Website](#)
[Catalog](#)



2
3
4
7
8

Circular Plastic Connectors (CPC)

- Mixed power and signal available in a single interconnect
- Ideal for harsh environments where mechanical shock, moisture and debris are prevalent
- Efficient field repair achieved by removable contacts and replaceable coupling ring

[Website](#)
[Catalog I](#)
[Catalog II](#)
[Product Presentation](#)

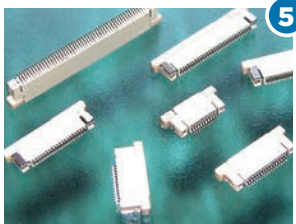


1
3
4
6
7
8

AMPLIMITE D-Subminiature Connectors

- Ideal for industrial applications due to intermateability and rugged design
- Proven performance at competitive prices
- Support a broad range of design and application needs with extensive product offering

[Website](#)
[Catalog](#)

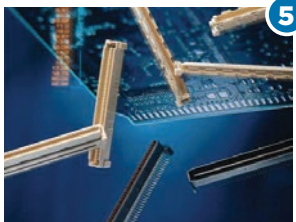


5

Flexible Printed Circuit (FPC) Connectors

- Maximize mating cycles and retention with zero insertion force (ZIF) option
- Support smaller and lighter designs with mixed signal and low power routing
- Maximize board space with angled insertion design option

[Website](#)
[Quick Reference Guide](#)



5

Free Height (FH) Board-to-Board Connectors

- Support high reliability with polarized mating
- Provide design flexibility with a variety of stack heights
- Save valuable PCB space with compact connector design

[Website](#)
[Catalog](#)
[Quick Reference Guide](#)



Authorized Distributor

1.800.CALL.TTI

te.com

**TTI, Inc.
2441 Northeast Parkway
Fort Worth, TX 76106-1816**

**The Specialist in Electronic Component Distribution
A Berkshire Hathaway Company**

www.ttiinc.com

© 2013 Tyco Electronics Corporation, a TE Connectivity Ltd. Company. All Rights Reserved.
AMPMODU, AMPLIMITE, CHAMP, Corcom, MATE-N-LOK, Motorman, PLASTI-GRIP,
TE Connectivity and the TE connectivity (logo) are trademarks.
Other logos, product and/or company names might be trademarks of their respective owners.

5-1773700-2 CIS CM 03/2013

While TE has made every reasonable effort to ensure the accuracy of the information in this brochure, TE does not guarantee that it is error-free, nor does TE make any other representation, warranty or guarantee that the information is accurate, correct, reliable or current. TE reserves the right to make any adjustments to the information contained herein at any time without notice. TE expressly disclaims all implied warranties regarding the information contained herein, including, but not limited to, any implied warranties of merchantability or fitness for a particular purpose. The dimensions in this catalog are for reference purposes only and are subject to change without notice. Specifications are subject to change without notice. Consult TE for the latest dimensions and design specifications.