

TE Connectivity Data Communications Product Guide:

Providing technology leadership for your next-generation high-speed architectural platforms

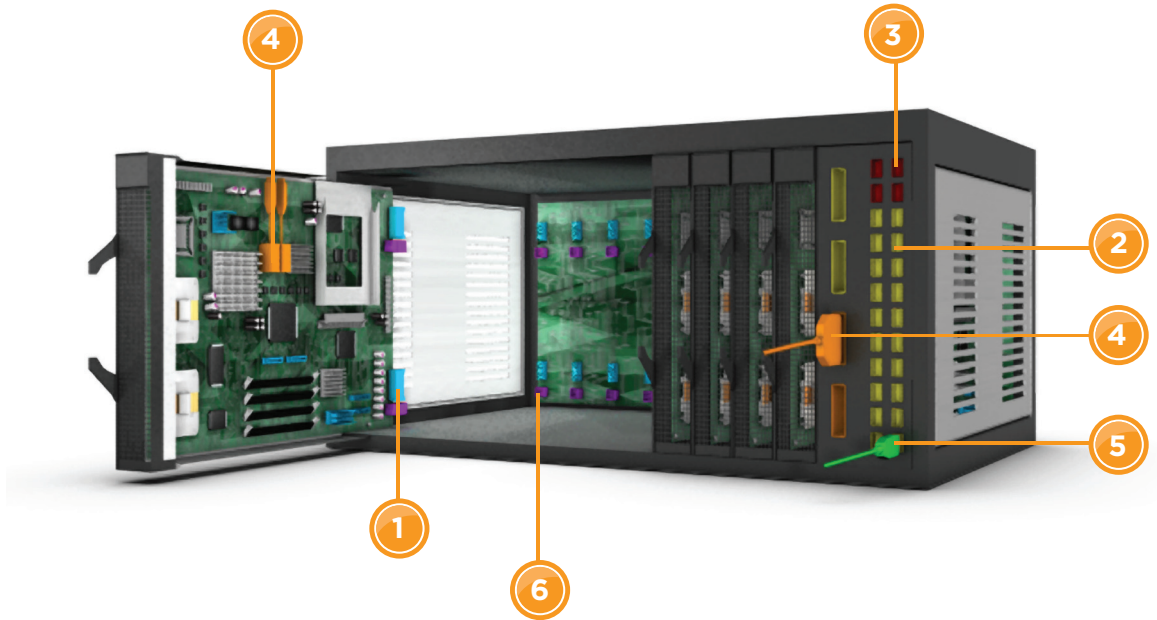
Success in today and tomorrow's data communications relies on dependable high-speed interconnections. From the data center, central office, enterprise communications and the wireless infrastructure, TE Connectivity provides a broad portfolio of high-speed products. This expansive portfolio addresses the increasing data rate demands for data communications.

This guide provides TE's high-speed product portfolio and capabilities for next-generation data communication architectures.



Authorized Distributor

DATA CENTER - SERVER



BOARD-TO-BOARD CONNECTORS 1

BackPlane

STRADA Whisper connector + + + +
www.te.com/products/STRADAwisper

IMPACT connector ● ● ●
www.te.com/products/Impact

Z-PACK TinMan connector ●
www.te.com/products/tinman

Z-PACK Slim UHD high-speed connector ● ●
www.te.com/products/zpackUHD

Z-PACK HM-Zd connector ●
www.te.com/products/HMZD

Z-PACK HM-Zd Plus connector ● ●
www.te.com/products/hmzdplus

MULTIGIG RT connector ●
www.te.com/products/multigigrt

Mezzanine

STRADA Mesa connector + + ●
www.te.com/products/STRADAmesa

STEP-Z connector ●
www.te.com/products/STEP-Z

CoPlanar

Z-PACK HM-Zd connector ●
www.te.com/products/HMZD

Z-PACK HM-Zd Plus connector ● ●
www.te.com/products/hmzdplus

Z-PACK Slim UHD high-speed connector ● ●
www.te.com/products/zpackUHD

KEY CODE

- | | |
|--|--|
| ● Data Rate: 25+ GB/s | ● Data Rate: 10G |
| ● Data Rate: 20-25 GB/s | ● Data Rate: 1G |
| ● Data Rate: 15-20 GB/s | ● Data Rate: 10/100 |
| ● Data Rate: 10-15 GB/s | ● Available + In Development |

** Data Rates based on current TE Connectivity road maps. Subject to change.

COMMUNICATION - SWITCH / ROUTER

I-O 2

Pluggable

Mini SAS HD connector +

In Development

Please contact technical support team on back page

MultiLink SAS connector +

In Development

Please contact technical support team on back page

Quad SAS connector + + +

In Development

Please contact technical support team on back page

SFP+ connector ●

www.te.com/products/SFPplus

zSFP+ connector + + + +

In Development

Please contact technical support team on back page

QSFP+ connector ●

www.te.com/products/QSFP

zQSFP+ connector + + + +

In Development

Please contact technical support team on back page

CXP connector +

www.te.com/products/CXP

zCXP connector + + +

In Development

Please contact technical support team on back page

CFP connector ● ● ● ●

www.te.com/products/cfp

Quadra connector (CFP2 & CFP4) + + + +

In Development

Please contact technical support team on back page

XFP connector ●

www.te.com/products/xfp

X2 connector ●

www.te.com/products/x2

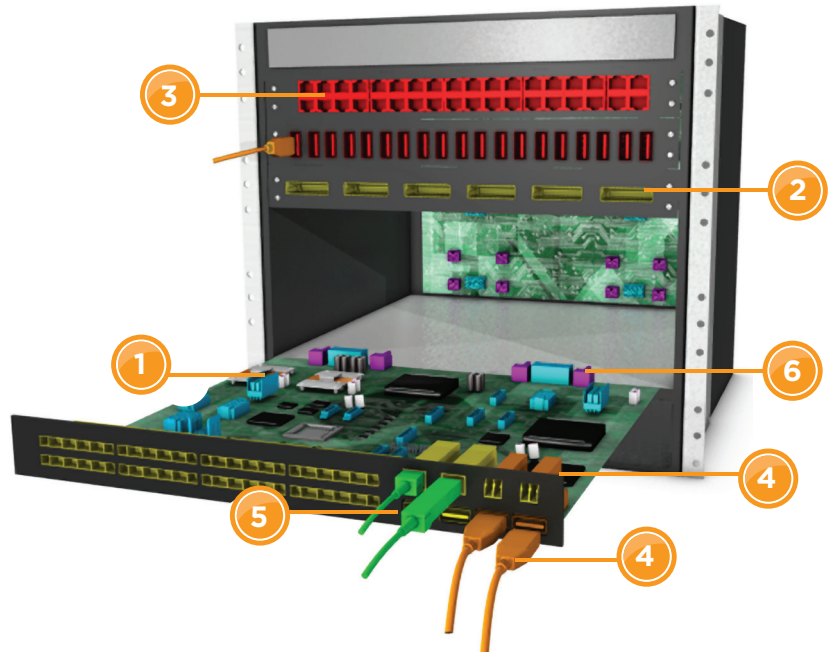
Cat 6A (10GBase-T) connector ●

In Development

Please contact technical support team on back page

RJ point five connector system + ● ●

www.te.com/products/rjpointfive



MAGNETICS 3

Discrete 10/100 transformer ●

www.te.com/products/planarmag

Discrete 1G transformer ● ●

te.com/products/planarmag

Discrete 10G transformer + + +

www.te.com/products/planarmag

1 x N Integrated Connector Module (ICM) ● ● ●

www.te.com/products/planarmag

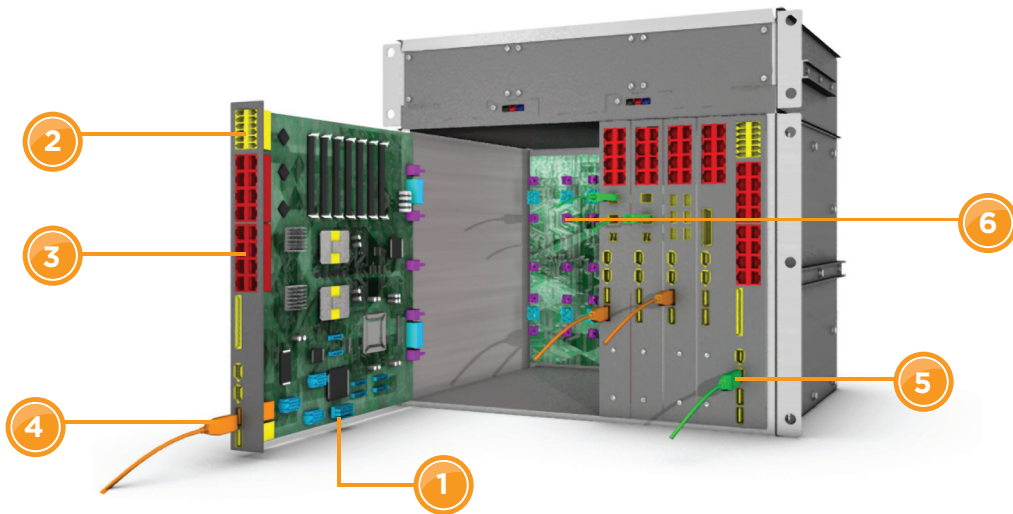
2 x N Integrated Connector Module (ICM) ● ● ●

www.te.com/products/planarmag

PoE+ 2 x N Integrated Connector Module (ICM) ● ●

www.te.com/products/planarmag

WIRELESS INFRASTRUCTURE - MOBILE SWITCH



FIBER OPTICS

4

Active Optical Cable Assemblies

QSFP cable assemblies ● ● ●
www.te.com/products/QSFP

QSFP+ cable assemblies ● ● ● ●
 In Development
 Please contact technical support team on back page

SFP+ cable assemblies +
 In Development
 Please contact technical support team on back page

CXP cable assemblies + + +
 In Development
 Please contact technical support team on back page

Hybrid cable assemblies + + +
 In Development
 Please contact technical support team on back page

Active Optical Modules (Transceivers)

QSFP modules + + +
www.te.com/products/QSFP-modules

QSFP+ modules + + + +
 In Development
 Please contact technical support team on back page

Advanced Packing Solutions

Mid-board optics + + +
 In Development
 Please contact technical support team on back page

COPPER CABLE ASSEMBLIES

5

4X cable assemblies (SAS, Fibre Channel, Infiniband, 10G Ethernet) ●
www.te.com/products/4X12X

HM-Zd cable assemblies ●
www.te.com/products/high-speed-cable-assemblies

QSFP+ cable assemblies ● ● ●
www.te.com/products/QSFP

SFP+ cable assemblies ● ● ●
www.te.com/products/SFPplusca

XFP cable assemblies ● ● ●
www.te.com/products/XFP

RJ *point five* connector system cable assemblies + ● ●
www.te.com/products/rjpointfive

Mini SAS cable assemblies ●
www.te.com/products/minisascableassy

Mini SAS HD cable assemblies + +
 In Development
 Please contact technical support team on back page

InfiniTwist cables + ● ●
www.te.com/products/InfiniTwist

POWER CONNECTORS

6

MULTI-BEAM XLE connector
www.te.com/products/MULTIBEAMXLE

ET Power connector
www.te.com/products/Etpower

MINIPAK HDL connector
www.te.com/products/minipakhdl

CROWN LINE connector
www.te.com/products/CROWNLINELINE

MULTI-BEAM XL connector
www.te.com/products/MULTIBEAMXL

HIGH-SPEED PRODUCT DEVELOPMENT CAPABILITIES AND TECHNOLOGIES

Signal Integrity Capabilities

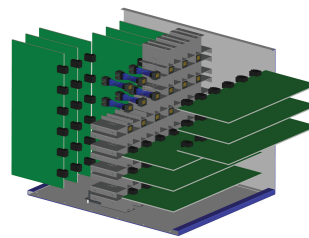
TE has leading edge signal integrity and Electro-Magnetic-Interference (EMI) modeling and testing capabilities required for ever increasing data rates. Our global team can function as your initial design and consultation resource to perform electrical modeling and simulation of high-speed connectors and cable assemblies. Additionally, we provide test and validation of electrical performances across your complete channel or system. So whether you're looking to validate a current system layout or developing the next-generation high-speed system, our signal integrity team can provide support for all areas of your analysis.

For more information about TE's signal integrity capabilities, visit our landing page at: <http://www.TE.com/documentation/electrical-models/>

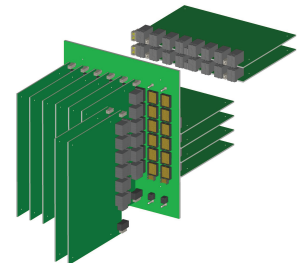
High-Speed Products Enabling Next-Generation Architectures

High-Speed Backplane

- Broad portfolio of high-speed, high-performance backplane connectors and cable assemblies for aggregate data rates greater than 100 Gbps (up to 40 Gbps per differential pair)
- Enables orthogonal and cabled backplane architectures
- Reduced connector noise and insertion loss
- Optimized PCB footprints



Cabled Backplane Architecture



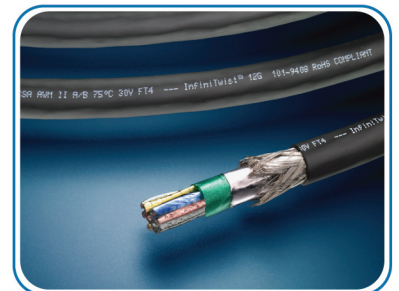
Traditional Orthogonal Backplane Architecture

High-Speed Copper Cables

- Wide array of high-speed, high-performance cables and cable assemblies for next-generation industry standard applications
- Conductor sizes of 32, 30, 28, 26 and 24 AWG available
- Capable of aggregate data rates greater than 100 Gbps (up to 40 Gbps per differential pair)



QSFP Cable Assembly



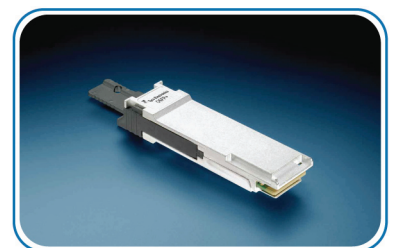
InfiniTwist Cable

High-Speed Fiber Optics

- Complete product solution set including passive and active optical cables and transceivers
- Our portfolio enables a wide range of applications including chip-to-chip, optical backplanes and fiber-to-the-antenna
- Capable of aggregate data rates greater than 100 Gbps (up to 40 Gbps per wave length)



QSFP Active Optical Cable Assembly



QSFP+ Transceiver

DATA COMMUNICATION INDUSTRY URLs

www.te.com/industry/datacenter
www.te.com/industry/communications
www.te.com/industry/wireless

TECHNICAL SUPPORT

| | |
|-------------------|--|
| USA Internet: | te.com/help |
| USA: | +1 (800) 522-6752 |
| Canada: | +1 (905) 475-6222 |
| Mexico | +52 (0) 55-1106-0800 |
| Latin/S. America: | +54 (0) 11-4733-2200 |
| Germany: | +49 (0) 6251-133-1999 |
| UK: | +44 (0) 800-267666 |
| France: | +33 (0) 1-3420-8686 |
| Netherlands: | +31 (0) 73-6246-999 |
| China: | +86 (0) 400-820-6015 |



Authorized Distributor

www.ttiinc.com
1 800 CALL TTI
information@ttiinc.com

te.com

© 2011 Tyco Electronics Corporation, a TE Connectivity Ltd. Company. All Rights Reserved.

IMPACT is a trademark of Molex Incorporated

MultiLink SAS is a trademark of SCSi Trade Association

CROWN LINE, InfiniTwist, MINIPAK HDL, MULTI-BEAM XL, MULTI-BEAM XLE, MULTIGIG RT, Quadra, RJ *point five*, STEP-Z, STRADA, STRADA Mesa, STRADA Whisper, Z-PACK, Z-PACK Slim UHD, Z-PACK TinMan, TE Connectivity and TE connectivity (logo) are trademarks. Other logos, product and/or company names might be trademarks of their respective owners.

CB CIS 12/2011

While TE has made every reasonable effort to ensure the accuracy of the information in this brochure, TE does not guarantee that it is error-free, nor does TE make any other representation, warranty or guarantee that the information is accurate, correct, reliable or current. TE reserves the right to make any adjustments to the information contained herein at any time without notice. TE expressly disclaims all implied warranties regarding the information contained herein, including, but not limited to, any implied warranties of merchantability or fitness for a particular purpose. The dimensions in this brochure are for reference purposes only and are subject to change without notice. Specifications are subject to change without notice. Consult TE for the latest dimensions and design specifications.