

TE Connectivity's (TE) market-defining technologies and engineering expertise are setting the pace for the future of connectivity. This guide provides a quick view of how TE's newest products provide solutions across a range of market-leading applications.

# NEW PRODUCT

## Application Guide

January 2019

- HANDHELD & PORTABLE DEVICES .....
- CONNECTED HOME .....
- SOLID STATE LIGHTING .....
- INTELLIGENT BUILDINGS .....
- VALUE ADD ASSEMBLIES .....
- FACTORY AUTOMATION .....
- DATA COMMUNICATION ARCHITECTURE .....
- HARSH ENVIRONMENTS .....
- DELIVERING THE POWER FOR ALWAYS-ON CONNECTIVITY .....



# HANDHELD & PORTABLE DEVICES

The rapidly growing needs of the electronics industry are trending toward smaller, lighter and thinner devices with improved portability. TE is at the forefront of this trend with the latest technology advancements and a broad portfolio of new compact interconnects that keep engineers in all markets ahead of changing industry needs.



**a. [MS5837-02BA Ultra-Small Gel-Filled Pressure & Temperature Sensor](#)**

Provides precise digital 24-bit pressure and temperature value with ultra-low power consumption. Improved endurance in chlorine environments.

**b. [Low Profile Flexible Printed Circuit \(FPC\) Connectors](#)**

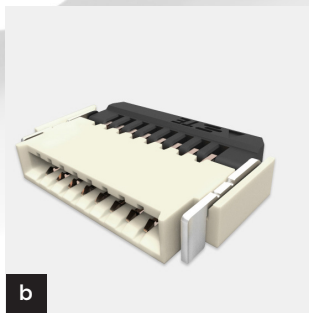
Save space with one of the lowest profiles in the market. Robust actuator design can help prevent it from breaking during assembly. 0.5mm back flip version has a dual contact design allowing the connector to mate with the cable in two orientations.

**c. [Waterproof \(IPX8\) USB Type-C Receptacles](#)**

Industry leading IPX8 water ingress performance per IEC 60529. Ideal for use in harsh environment applications where moisture is present.

**d. [Block SIM and Micro SD Card Connectors](#)**

Enable flexibility and



cost efficiency without a fixed metal shell. Help increase durability with anti-buckling contact design.

**e. [3-in-2 Card Connector](#)**

Provide a more robust solution to help prevent damage during card insertion or removal. Enable flexibility to accept either 2 SIM cards, or 1 SIM card and 1 micro SD card.

**f. [SpO<sub>2</sub> Optical Components](#)**

Enable precision with the red LED wavelength tolerance up to 660nm ± 2nm. Provide high reliability and near flawless quality.

**g. [Sensor Development Boards](#)**

Help accelerate product development and rapid prototyping for pressure, temperature, and humidity sensors. Provide an easy interface to standard platforms with Microchip Explorer 16, ARDUINO/Genuino, Grove or Raspberry Pi options.

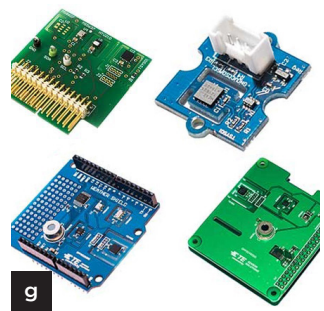
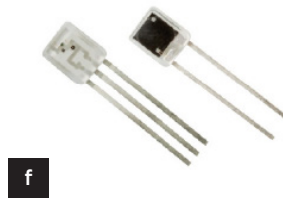
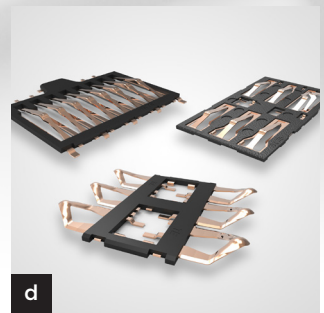


**h. [5A Low Profile Battery](#)**

Enhance reliability and avoid contact stubbing with one piece contact design. Support faster charging with 5A current carrying capability.

**i. [USB Type-C Splash Proof Receptacle](#)**

Save space with a mid-mount dual row SMT, 0.65mm offset product design. Help meet the needs of harsh environments with an IPX4-rated splash proof design.



# CONNECTED HOME

With our global network of engineers, TE can help turn your vision for connected home applications into a reality. With a broad range of connectivity and sensor solutions for home appliances and devices, lighting, HVAC, security, and more, TE is the ideal partner to help you bring your products to market fast.

**a. BUCHANAN WireMate Two Piece Poke-In Series**

Allows easy wiring for home installation with tool-less poke-in wire termination. Provides flat connector surface reserved for wire marking (color options available).

**b. Flex Grip Wire Connectors**

Allows for fast and easy termination to decrease installation time. Provides flexibility to rework wiring and reuse the connector.

**c. AmbiMate Sensor Module Development Kit MS4 Series**

Accelerate time to market with a pre-engineered sensor solution. Integrate the AmbiMate sensor module easily using the I2C communication protocol.

**d. Low Profile Flexible Printed Circuit (FPC) Connectors**

Save space with one of the lowest profiles in the market. Robust actuator design can help prevent it from breaking during assembly. 0.5mm back flip version has a dual contact design allowing the connector to mate with the cable in two orientations.

**e. Waterproof (IPX8) USB Type-C Receptacles**

Industry leading IPX8 water ingress performance per IEC 60529. Ideal for use in harsh environment applications where moisture is present.

**f. SlimSeal Connector Miniature Series**

Enable a sealed solution with an IP67 rated connector. Prevent unintentional un-mating of connectors with a positive latching system.

**g. 250 Series Miniature FASTON Receptacle**

Fit in confined spaces with

miniature size in a straight configuration. Mate with standard .250 x .032 inch tabs.

**h. Twist Splice Wire Connectors**

Terminate 22 AWG to 8 AWG wires with an industry standard color-coded splice. Ensure quick, tight and secure connections with square-wire spring threads that provide a positive grip.

**i. Poke-In Slim Wire Connectors**

Allow for quick rework with release function. Save space with compact design for densely populated PCB layouts.

**j. USB Type-C Receptacle**

Deliver data, power, and A/V through a single connection at faster speeds. Enable easy, reliable mating with reversible design.



c



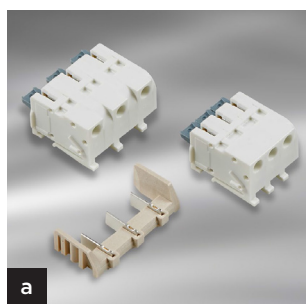
g



d



h



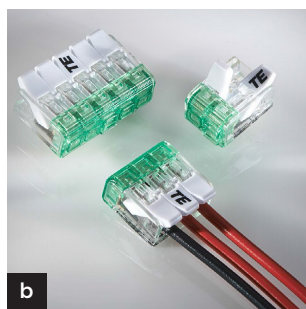
a



e



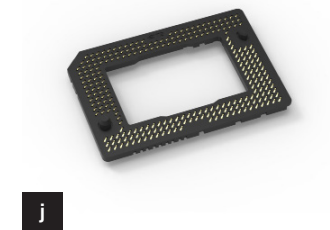
i



b



f

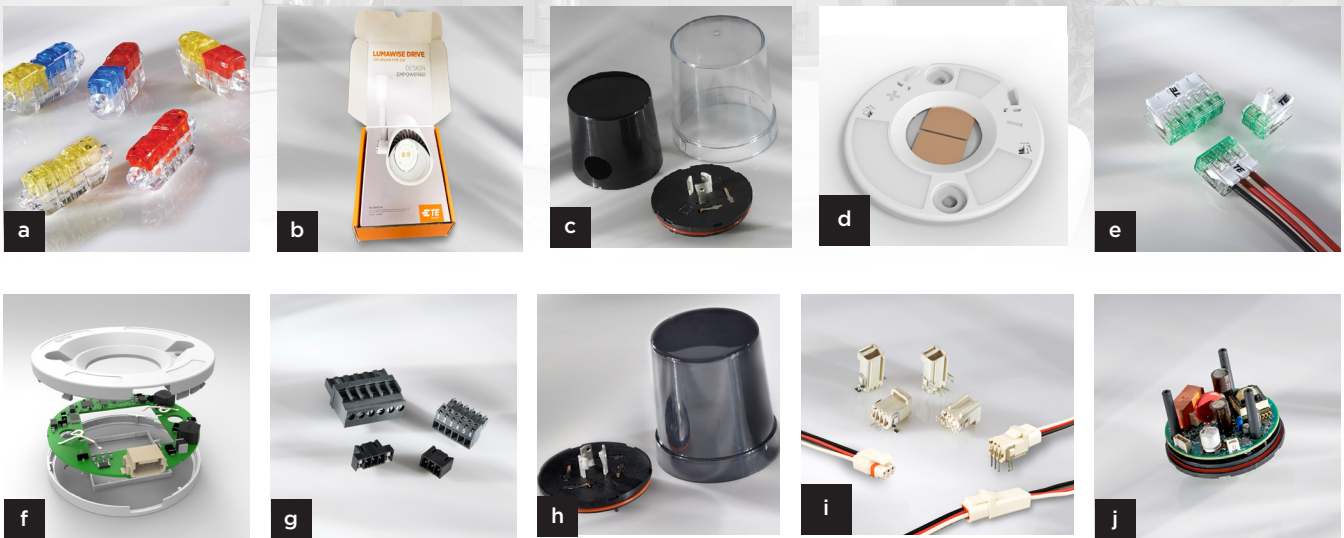


j



# SOLID STATE LIGHTING

TE is a leader in the development of next generation Solid State Lighting (SSL) solutions. From outdoor luminaires to commercial refrigeration, new technologies drive lighting innovation. Whether you are creating a new system or enhancing an existing design, TE provides a wide range of new energy-saving solutions.



**a. [CoolSplice Connector Large Wire](#)**

Save installation time and eliminate the need to pre-strip wires with insulation displacement technology (IDC). Enable a waterproof solution with an IP rated splice.

**b. [LUMAWISE Drive LED Holder Type Z50 Development Kit](#)**

Provide thermal and electrical connection to four CoB sizes: 16x19mm, 19x19mm, 20x24mm and 24x24mm. Achieve design flexibility with an LED holder available with four current outputs: 350mA, 500mA, 700mA, 1050mA.

**c. [LUMAWISE Endurance N 75mm tall Photo Control Cover and Base](#)**

Achieve long term reliability using TE's proven power and

signal interface. Translucent covers allow transmission of daylight to the light sensing device.

**d. [LUMAWISE Z45 LED Holder](#)**

Quick and easy assembly of the COB LEDs in the luminaire. Optics close to light emitting area.

**e. [Flex Grip Wire Connectors](#)**

Allows for fast and easy termination to decrease installation time. Provides flexibility to rework wiring and reuse the connector.

**f. [LUMAWISE Drive LED Holder Type Z50](#)**

Achieve an elegant luminaire design through a 'driver on board' solution. Provide thermal and electrical connection to 19x19mm, 20x24mm, 16x19mm and 24x24mm size CoBs.

**g. [BUCHANAN WireMate Connectors Surface Mount TB Series](#)**

Allow for simple reflow soldering and faster PCB assembly through surface mount terminal blocks. Help ensure secure PCB mounting through SMT retention features.

**h. [LUMAWISE Photo Control Base & Cover](#)**

Achieve a total TE solution that integrates power and signal interface to the dimming receptacle to help ensure long term reliability. Design with confidence with a long lasting solution that stands up to the harshest environments.

**i. [SlimSeal Connector Miniature Series Headers](#)**

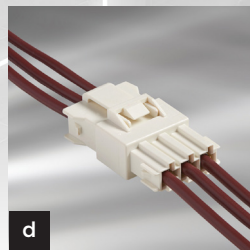
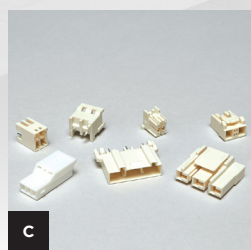
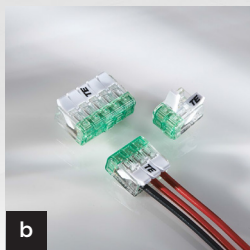
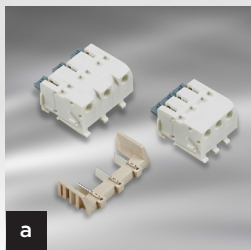
Prevent inadvertent unmating of connectors with positive latching feature. Achieve an ideal solution for dust and waterproof applications with an IP67 rated connector.

**j. [LUMAWISE Endurance N Enhanced Base](#)**

Enable cost-effective design re-use through organized DC power and signaling interfaces. Reduce supply chain expenses with new project opportunities, lower certification and engineering.

# INTELLIGENT BUILDINGS

As today's buildings become increasingly efficient and connected, TE offers many solutions to solve complex connectivity challenges. Our new products seamlessly integrate controls and transmit power and data across multiple building systems, from environmental and illumination controls to people flow, convenience and service equipment, delivering safer and more secure living and working spaces.



**a. [BUCHANAN WireMate Two Piece Poke-In Series](#)**

Allows easy wiring for home installation with tool-less poke-in wire termination. Provides flat connector surface reserved for wire marking (color options available).

**b. [Flex Grip Wire Connectors](#)**

Allows for fast and easy termination to decrease installation time. Provides flexibility to rework wiring and reuse the connector.

**c. [High Current GRACE INERTIA Connectors with Terminal Position Assurance \(TPA\)](#)**

Assures terminals are fully seated in the housing and also provides an added measure against terminal back-out through use of optional terminal position assurance (TPA) device. Supports high current requirements for wire-to-board connections with 20 amp, 600 volt rating when used with 12 AWG wire.

**d. [Multi-Position Mounted FASTIN-FASTON Housings](#)**

Allows three simultaneous connections to be made, potentially speeding up this step of assembly. Utilizes FASTIN-FASTON tabs and FASTON receptacles that have demonstrated proven performance across many applications and markets.

**e. [Slot ID 9 MAG-MATE Terminals](#)**

Offers solutions for wire sizes that were not previously accommodated by MAG-MATE terminals, accepting 25-24 AWG (0.45-0.50 mm) aluminum and 27-24 AWG (0.38-0.50 mm) copper magnet wire. Eliminates the need to pre-strip film-insulated magnet wire by using insulation displacement connection technology.

**f. [POWER TRIPLE LOCK PCB Headers](#)**

Expand wire-to-board options with new headers for connector family offering 3-in-1 locking. Right angle and vertical types permit design flexibility.

**g. [Potter & Brumfield Relay T9G Series](#)**

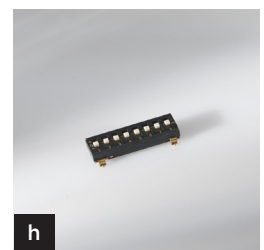
Save PCB space with the smallest relay in its class while maintaining a standard footprint. Achieve a globally applicable relay solution with UL, CQC and VDE certifications.

**h. [ALCOSWITCH DIP Switch TDS Series](#)**

Enable unique coding configurations that promote added security through three-state positioning. Achieve design flexibility through extended or flush actuators.

**i. [Poke-In Slim Wire Connectors](#)**

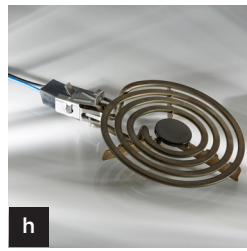
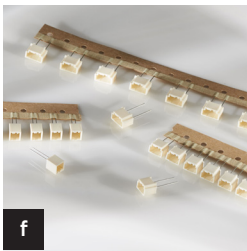
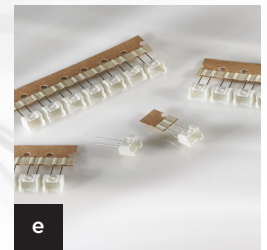
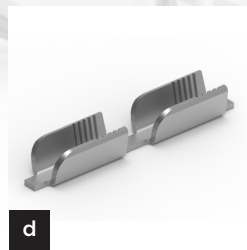
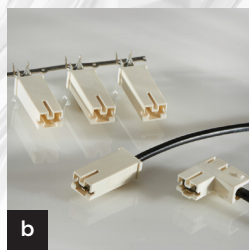
Allow for quick rework with release function. Save space with compact design for densely populated PCB layouts.



## VALUE ADD

# ASSEMBLIES

Critical to the performance of system to system connection, TE's design experience supports complete performance, efficiency and applied cost savings. For essentially any subsystem including control boards, power systems, cable assemblies, controllers, timers or sensors, TE products enable a broad range of solutions.



**a. [RZF Power Relays](#)**

Reduces the amount of space required above the PC board, allowing the board to be placed closer to the enclosure or other subsystem in the application. Operates in ambient temperature up to 85°C.

**b. [Pre-insulated POD-LOK Receptacle Terminal](#)**

Supports low applied cost as the applicator can crimp receptacle to wire and push housing onto receptacle in one quick step. Eases assembly and may help prevent unintended partial connections thanks to low insertion force.

**c. [4.8 FASTON Receptacle for Multi-thickness Tabs](#)**

Mate with either a 0.5 or 0.8mm thick tab. Support many different applications by accepting wire sizes 0.5 - 2.5 mm<sup>2</sup>.

**d. [AMPLIVAR Splice for Fine Aluminum Magnet Wire](#)**

Provide efficient connectivity with the ability to accommodate up to three fine Al magnet wires plus a copper stranded lead wire (400 to 1500 CMA total) in a single splice.

**e. [Economy Power 2.5 Headers on Tape and Reel](#)**

Support color keying of connections and help prevent mis-mating when there are multiple headers on the same board with different color options.

**f. [2.5 GRACE INERTIA Headers on Tape and Reel](#)**

Support high volume automated PC board assembly operations to help reduce labor costs and improve productivity with new packaging option.

**g. [Standard Power Timer Housings with TPA](#)**

Supports primary power delivery to the PC board in a variety of applications. Speeds assembly when compared to making individual connections for each line and are a more ergonomic solution.

**h. [Low Cost Surface Burner Housing](#)**

Satisfy multiple design requirements with side retention ears on the housing that allow it to easily be snapped into clips of various configurations.

**i. [250 Series Miniature FASTON Receptacle](#)**

Fit in confined spaces with miniature size in a straight configuration. Mate with standard .250 x .032 inch tabs.

**j. [Signal Double Lock Connectors in Glow Wire V-O Material](#)**

Meet Glow Wire test requirements, IEC 60335-1 5th edition and UL 94 V-0 rating requirements with nylon PA66 material.

**k. [250 High Temp Positive Lock Receptacles and Housing](#)**

Offer low insertion force for improved ergonomics. Operate in temperatures up to 250°C and the high temperature housings operate in 240°C.



## FACTORY

# AUTOMATION

As production environments become increasingly automated and decentralized, even the smallest connections are mission critical. TE delivers new innovative solutions to connect, power and control every aspect of production—from machinery to process optimization on the circuit board to the most unforgiving factory floor.



a



b



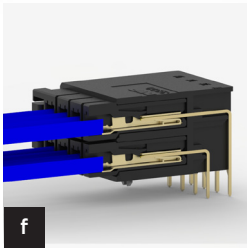
c



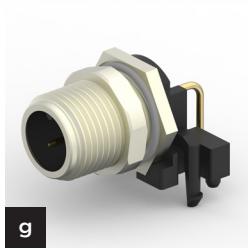
d



e



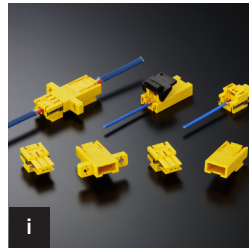
f



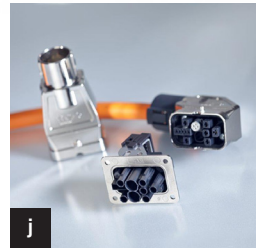
g



h



i



j

**a. [Dynamic D3950 Series](#)**

Reliable connection by Dynamic series “Multiple contact points” concept. Safe and Easy mating with locking system by pushing the plug for mating of connector and audible sound at locking position.

**b. [Potter & Brumfield Solid State Relays](#)**

Offers a longer electrical life due to lack of moving parts. Eliminate noise with silent switching operation.

**c. [Potter & Brumfield solid state relays SSRDC series](#)**

Provides low power dissipation to extend electrical life. Achieves high Pulse Width Modulation with low switching times when providing power to devices.

**d. [Potter & Brumfield solid state relays SSRK SSRM series](#)**

Allows for quicker heat dissipation with integrated heatsink. Save cabinet space with slim 22.5mm profile with DIN Rail mounting. Easy installation with finger.

**e. [M5800 Rotatable Digital Display Transducer](#)**

Enable ease of installation with optimal viewing of pressure values with a 310° rotatable digital LED display. Offers configuration flexibility for pressure range, pressure fitting, analog output and electrical connections.

**f. [Dynamic Series D-3200 First Mate Last Break Contact System](#)**

Help ensure safer connections when establishing ground before making power connections and maintain ground until

after power connections are broken (FMLB). Provide a very stable electrical and mechanical connection and enable low insertion forces with a design that has multiple points of contact.

**g. [M8/M12 Panel Mount and PCB Connectors](#)**

Allow for maximum design flexibility for PCBs with broad portfolio and many configurations. Offer ruggedized, cost-effective connections for use in harsh industrial environments.

**h. [M5600 and U5600 Wireless Pressure Transducers](#)**

Allow wireless transmission of instrumentation signals and the ability to build software protocol to meet application requirements via Bluetooth® communication.

**i. [K-type Thermocouple Connectors](#)**

Provide a reliable connection in harsh industrial and vibration-prone environments. Prevent miss-matching with the keying interface.

**j. [Motorman Shroud](#)**

Save space with a fully calibrated temperature compensated sensor with a Total Error Band (TEB) of ±2.5% FS over the compensated range. Measure absolute, gauge, differential, or compound pressure from 0-1 to 30 psi with high resolution digital output.

# DATA COMMUNICATION ARCHITECTURE

The dramatic increase of information flow around the globe has driven the need for communication equipment and architectures that support higher density and faster speeds. As a leader in the industry, TE supports these trends with connectors and cables capable of 10- to 25- Gbps and beyond. TE drives standards and protocols, expertise in signal integrity, and has a broad portfolio of connectivity solutions for every level of data communication.



**a. [48V Bus Bar Connectors & Cable Assemblies](#)**

Connectors and cable assemblies specifically designed for Open Rack Standard V2.0. allow for a single vertical bus bar to be used in the rack, lowering overall system cost.

**b. [ELCON Micro Power Connectors](#)**

High current in common industry footprint. Virtually fool-proof mating.

**c. [Next Generation 0.8mm Free Height Connectors](#)**

Achieve 32 Gbps+ - one of the highest in the market. Excellent price-to-performance ratio.

**d. [RF Adapters](#)**

Enhance an already extensive portfolio that includes RF connectors and cable assemblies, antennas and board level shielding.

Excellent electrical performance including great VSWR, low insertion loss and extension to 67 Ghz for high frequency adapters.

**e. [High Density Card Edge Power Connectors](#)**

Provides high current density at 25A/ contact with 5.08mm pitch and low contact resistance at 0.4 mΩ average.

**f. [Side Exit CROWN CLIP Junior Cable Assemblies](#)**

Utilizing a side exit cable design enables space savings up to 50% over traditional bus bar cable assemblies. Side exit cable minimizes the need to bend cables when routing beyond the center of the enclosure.

**g. [zQSFP+ 1x4 Cages with 8 Lightpipes per Port](#)**

Increased visibility into each individual channel's performance.

**h. [zQSFP+ Stacked Belly-to-Belly Cages](#)**

Stacked belly-to-belly design enables single PCB architecture versus two PCBs per line card - offering significant cost savings. Support higher density switch designs using next-generation 48 and 64 silicon ports, including Open Com.

**i. [Sliver Internal Interconnects](#)**

Provide ultimate flexibility in applications, data rates and protocols. Save space with 0.6mm contact pitch.

**j. [Bus Bar Power Connectors & Cable Assemblies for OCP](#)**

Design for Open Compute Project (OCP) applications. Lower contact resistance for decreased power consumption.

**k. [zSFP+ Cages & Connector for Intel Omni-Path Architecture](#)**

Enable 3-high zQSFP+ 100G and 200G capability with belly-to-belly cages and connector. Provide higher density I/O ports and support high throughput silicon chips.

**l. [SFP28 and QSFP28 Cable Assemblies](#)**

Improved performance with signal integrity expertise. Full solution with cable assemblies, connectors and cages.

**m. [CDFP Connectors, Cages & Cable Assemblies](#)**

Enable faster speeds with one of the highest port and bandwidth densities on the market. Maximize efficient use of space with 16 lanes of bi-directional data transfer.

**n. [0.5mm Fine Pitch Hermaphroditic Connectors](#)**

Simplify inventory management with "mate-to-itself" hermaphroditic design. Perform reliably in demanding environments.

**o. [OSFP Pluggable I/O Connectors and Cages](#)**

Utilizes integrated thermal heatsink technology in the plug to provide superior performance and signal integrity needed at 400G data rates.

# HARSH ENVIRONMENTS

Electronic components are expected to work in more extreme conditions than ever before. Withstand these rugged environments with TE's new products that provide protection against the most challenging situations your application may experience including vibration, moisture, debris and sunlight.



**a. [CAT5E Data Cable](#)**

Compliant to EN45545-2. Full range of data cables available, from 120 ohm to 1Gb.

**b. [EN45545 Compliant HDC Inserts](#)**

Compliance with safety regulations. Reliable electrical connection.

**c. [HDC HCM 250 & 350](#)**

Achieve longer service life due to reliable aluminum alloy housing with durable structure. Providing reliable connection in harsh outdoor environment with IP68 protection degree.

**d. [M12 Rail Cable Assemblies](#)**

Decrease installation time with preassembled cable assemblies. Fire and smoke compliant according to EN45545.

**e. [M12 Rail X-Coded Connector Series](#)**

Achieve a data transmission speed of up to 10Gb/second with the 360o cable shield termination. Reduce service cost due to torsion free cable crimping.

**f. [MU27P Connector Series](#)**

Longer product durability with high salt spray resistance to increase product life cycle. Vivid colors enable clear distinction between different versions to prevent mismatching.

**g. [Sealed Mini Fuse Holder](#)**

Enable quick and easy assembly of up to two active and two spare ATM fuses and protect against harsh environments with a robust seal interface and IP67 rating.

**h. [Heavy Duty Connector Plastic Locking Levers](#)**

Lower investments with a cost-effective alternative compared to stainless steel against the same performance. Increase lifetime with reduced corrosion failure with use of Industrial Thermoplastic Material.

**i. [DiBo+ EV Charger Type 1 Cable Assembly](#)**

Help provide superior life, maximum reliability and functionality for a majority of movement with high flex cable. Help ensure safe

usage with a design that keeps moisture outside the connector body and prevents corrosion of the crimping zone.

**j. [Potter & Brumfield Relay T9V Series](#)**

Help achieve better isolation with extended contact gap. Save space with a small, yet powerful 40A/250VAC relay.

**k. [SpO<sub>2</sub> Optical Components](#)**

Enable precision with the red LED wavelength tolerance up to 660nm ± 2nm. Provide high reliability and near flawless quality.

**l. [Cat7 Rail Data Cables](#)**

Offer a full range of cables to meet all rail high speed data requirements. Expand design capabilities for broader bandwidth Ethernet connections with increased speed.



# OFFER ADVANCES IN QUICK DISCONNECT TERMINATION WITH STANDARD LINE FASTON RECEPTACLES

TE Connectivity's (TE) FASTON products have been the industry leader in the appliance and automotive industries for years. TE continues to reinvent the FASTON product line to meet the changing trends in these, and other, industries.

## DISCOVER WHAT'S NEW: New Standard FASTON Receptacle Terminals Including 2D Crimp Option

DESCRIPTION	PART #
FASTON 250 STD REC STR F-CR 18-14 TPBR (250X032)*	<a href="#">2238196-3</a>
FASTON 250 STD REC RHFLAG TAB 18-12 TPBR (250X032)*	<a href="#">2238197-3</a>
FASTON 187 STD REC STR F-CR 20-16 TPBR (187X032)*	<a href="#">2238198-3</a>
FASTON 187 STD REC STR18-16 OR 2X18 TPBR (187X032)*	<a href="#">2238199-3</a>
FASTON 187 STD REC RH FLAG TAB20-16 TPBR (187X032)*	<a href="#">2238200-3</a>
FAST .250 STD REC STR 2D AWG22-12 TPBR (250X032)	<a href="#">2238173-3</a>
FAST .250 STD REC RHFLG 2D AWG22-12 TPBR (250X032)	<a href="#">2238171-3</a>
FAST .187 STD REC STR 2D AWG24-14 TPBR (187X032)	<a href="#">2238174-3</a>
FAST .187 STD REC RHFLG 2D AWG24-14 TPBR (187X032)	<a href="#">2238172-3</a>

\*High temperature nickel plated steel version also available. See Quick Reference Guide for part number.

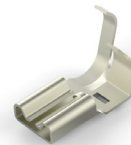
## CREATE FUTURE-READY PROJECTS WITH HIGH PERFORMANCE AND MORE:

- Insertion force is 6 lbs (27 N), average, when used with FASTON tabs, easing assembly
- Robust design fully meets specifications on sixth mating cycle, not just the first one, supporting applications where assembly operations or field repairs might require disconnection and reconnection
- Tin-plated brass Standard line FASTON receptacles are rated at 125°C, rather than the 110°C rating of some other tin-plated brass quick disconnect terminals
- Nickel-plated steel Standard line FASTON receptacles are rated at 250°C
- Choice of crimp options for tin-plated brass receptacles includes innovative 2D crimp that allows one terminal and one applicator to accommodate many wire sizes, potentially reducing design-in, procurement, inventory and production costs
- Standard line FASTON receptacles are backward compatible with housings designed for Premier, Budget and LIF line FASTON receptacles
- To learn more, visit: [www.te.com/standardfaston](http://www.te.com/standardfaston)

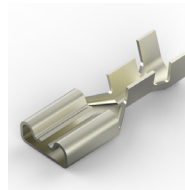
## ADDITIONAL RESOURCES LEARN MORE:



[Standard FASTON Receptacles Quick Reference Guide](#)



[Product Specification 108-143087](#)



[Application Specification 114-2036 - Straight Standard FASTON Receptacles, F-Crimp](#)



[Application Specification 114-2078 - Flag Standard FASTON Receptacles, Tab-Lok Crimp](#)



[Application Specification 114-143088 - Straight Standard FASTON Receptacles, 2D Crimp](#)



[Application Specification 114-143089 - Flag Standard FASTON Receptacles, 2D Crimp](#)

# INNOVATIVE SOLUTIONS

Whether you are designing a new system or enhancing an existing design, TE is your solution provider for electromechanical and electronic components.



## Terminals and Splices

Discover terminals and splices that help reduce cost and enhance productivity



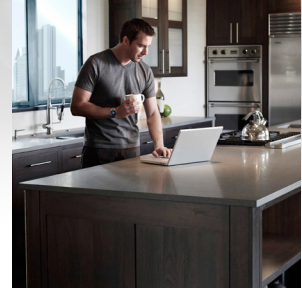
## Drones

Develop cutting-edge drone technology



## Relays

Help increase reliability and enhance productivity in your applications



## Connected Home

Turn your vision for connected home applications into a reality



## Power

Drive design solutions with TE's array of power products



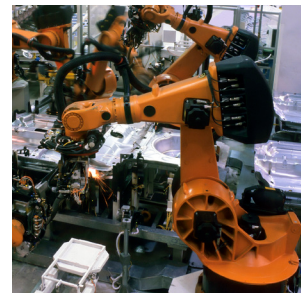
## Wearable Devices

End-to-end connectivity for your wearable devices



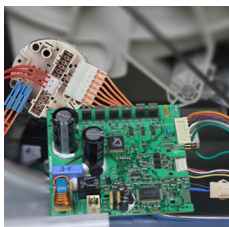
## I/O Communications

Satisfy needs of diverse markets and solve size and data rate challenges



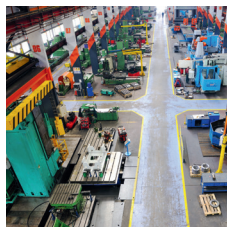
## Motion & Drives

Save power and reduce applied cost while increasing system reliability



## Subsystem Design

Support end products across many industries



## Industrial Control

Reliable, quick to install and industry-proven components



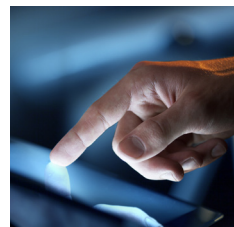
## Building Safety and Security

Stay ahead of the trend for increased building intelligence



## Material Handling

Save on system maintenance costs and down time



## Portable & Handheld Devices

Ease the transition to higher data rates, increased protection and smaller packaging



© 2018 TE Connectivity Ltd. family of companies. All Rights Reserved.

1-1773840-2 CM PL 10/2018 Rev 6

AmbiMate, CoolSplice, CROWN CLIP, SlimSeal, ELCON, FASTIN-FASTON, FASTON, LUMAWISE, NECTOR, BUCHANAN, WireMate, ALCOSWITCH, POWER TRIPLE LOCK, Potter & Brumfield, AMPLIVAR, GRACE INERTIA, Positive Lock, POD-LOK, Motorman, ChipConnect, MAG-MATE, Raychem, TE Connectivity and TE connectivity (logo) are trademarks. ZQSFP+ and zSFP+ are part of the ZXP® family of connectors and use ZXP technology. ZXP is a trademark of Molex, LLC. Other logos, product and company names mentioned herein may be trademarks of their respective owners.

While TE has made every reasonable effort to ensure the accuracy of the information in this brochure, TE does not guarantee that it is error-free, nor does TE make any other representation, warranty or guarantee that the information is accurate, correct, reliable or current. TE reserves the right to make any adjustments to the information contained herein at any time without notice. TE expressly disclaims all implied warranties regarding the information contained herein, including, but not limited to, any implied warranties of merchantability or fitness for a particular purpose. The dimensions in this brochure are for reference purposes only and are subject to change without notice. Specifications are subject to change without notice. Consult TE for the latest dimensions and design specifications.

