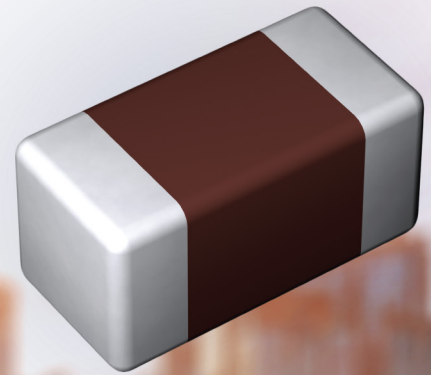


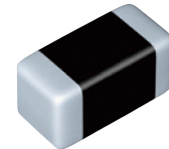
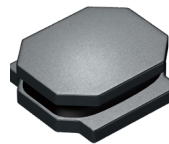


Taiyo Yuden

Product Line Card



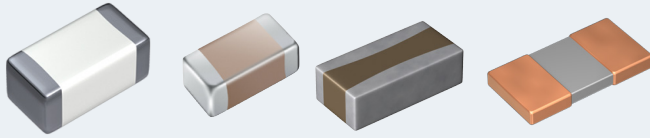
TAIYO YUDEN



Taiyo Yuden is a world leader in multilayer ceramic capacitors (MLCCs) and automotive grade components with more than 70 years of experience. Their innovation, expertise and highly reliable product offerings specialize in high capacitance and small package sizes for applications ranging from EV charging to drivetrain electrification to infotainment and more.

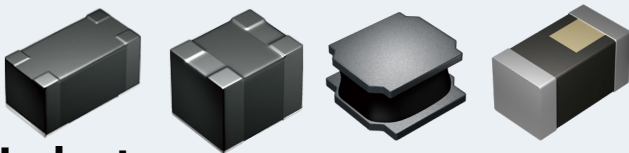
Taiyo Yuden's high-quality product line further enhances TTI's already wide and deep inventory of board-level mobility offerings that are in stock and ready to ship.

Reach your local sales team at 1.800.CALL.TTI



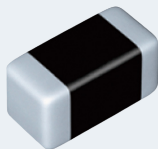
Multilayer Ceramic Capacitors

- High Dielectric Type
- Medium-High Voltage
- High Frequency/Low Loss
- Low Distortion Design/Audible/Good Bias
- LW Reversal Decoupling Low ESL Capacitors (LWDC™)
- Temperature Compensating Type
- Soft Termination



Inductors

- Multilayer Metal Power Inductors MCOIL™
- Wire-wound Metal Power Inductors MCOIL™
- Wire-wound Ferrite Inductors
- Wire-wound Ferrite Power Inductors
- Wire-wound Ferrite Inductors for Signal Lines
- Wire-wound Class D Amplifiers



Noise Suppression Components

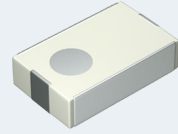
Wire-wound Ferrite Bead Inductors for Power Lines

- High Current
- High-Frequency, High Current
- High-Z, High Current
- High-Temp, High Current

High Frequency Products

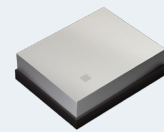
Multilayer Ceramic Devices

- Band Pass Type
- Low Pass Type
- High Pass Type
- Diplexers
- Triplexers
- Coupler



SAW/FBAR Devices

- Duplexers
- Triplexers
- Quadplexers
- Dual Type
- Triple Type



Chip Antennas (Multilayer)

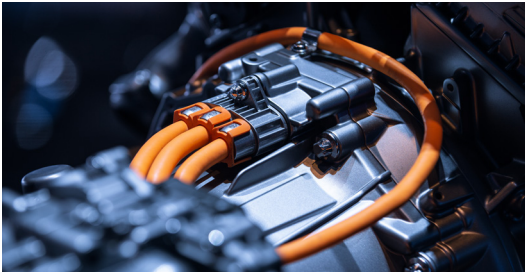
- GPS
- W-LAN
- Bluetooth
- WiMAX
- UWB
- ZigBee



Power Storage Devices (Capacitors)

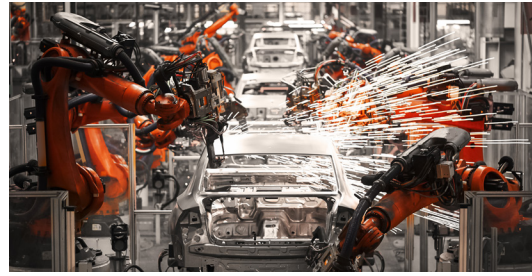
- Cylinder Type Electric Double-Layer Capacitor

As a leader in capacitors, inductors, ferrite beads and signal conditioning, Taiyo Yuden offers electronic industry professionals a wide range of options to build and design modern, high-performing solutions for applications in automotive, manufacturing, industrial equipment and more.



Automotive (Powertrain/Safety)

- Engine ECU
- Electric Power Train
- Transmission ECU
- ADAS ECU
- Airbags
- Anti-lock Brake System (ABS)



Industrial

- Smart Meters/Smart Grids
- Factory Automation Equipment
- Industrial Robots
- Machine Tools
- LED Lighting
- Medical Equipment



Automotive (Body/Chassis)

- Keyless Entry
- LED Headlights
- Power Steering
- Cruise Control Unit
- TPMS



Communication Infrastructure

- LTE Base Transceiver Stations
- Power Supplies for Communication Equipment
- Edge Routers



Automotive (Infotainment)

- Car Audio
- Car Navigation/GPS
- Instrument Clusters
- ITS/Telematics
- Drive Recorders



Consumer Goods

- Smartphones
- Computers
- Wearables
- IoT device





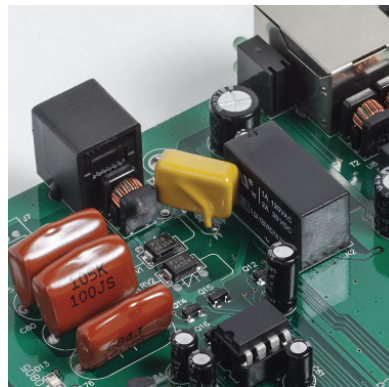
Why Buy from the Specialist in Electronic Component Distribution?

Founded in 1971, TTI has steadily grown to become the world's leading interconnect, passive, electromechanical and discrete component distributor in the industry. The company was founded on the premise that passive component purchasing could be made more efficient by offering product specialization, customer-driven service, and proprietary supply chain solutions.



Knowledgeable Product Experts

Specialization allows TTI product managers to provide much better product insight to support your manufacturing from design through production. TTI Specialists' commitment to our customers is key to our continued success.



Broader and Deeper Inventories

TTI maintains extensive component inventories, stocking more than 500,000 part numbers in North America and over 850,000 globally – that's more interconnect, passive, electromechanical and discrete inventory available than from any other source.



AIM - Advanced Inventory Management Platform

TTI's proprietary supply chain system is specifically designed for managing IP&E products and partnerships with premier manufacturers. This allows us to provide the BOM coverage necessary to deploy comprehensive solutions that reduce total cost of ownership and mitigate line down risk.

Quality and Reliability

TTI is the first distributor to have all global warehouse locations ISO registered and currently are certified to ISO 9001 with AS9100C and ISO 14001 in North America, ISO 9001, EN 9100, ISO 14001 and EN 9120 in TTI Europe and ISO 9001 in TTI Asia.

Year after year, customers rate our inventory availability, on-time delivery and accuracy among the very best in the industry – call your local TTI Specialists at 1.800.CALL.TTI and discover why.



1.800.CALL.TTI • tti.com



09/22
2000