

# INDUSTRIAL CONTACTS

**SIZE 16 AND 20**

**FOR HEAVY DUTY APPLICATIONS**



preci-dip

swiss world connects



preci-dip

## INDUSTRIAL CONTACTS – SIZE 16 AND 20

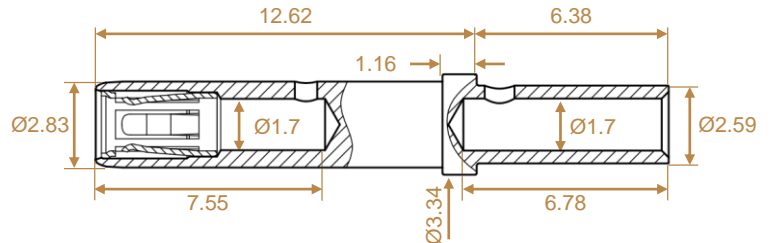
Identical to MIL QPL:

- Dimension
- Mating diameter
- Insertion/ separation forces
- First engagement point

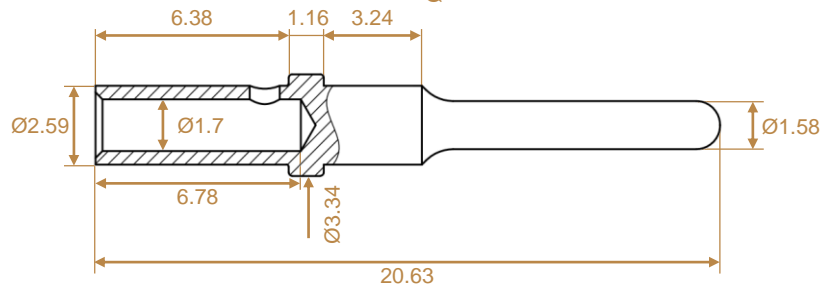
Material: Contact body  
 Machined brass acc. to ASTM B121/B121M  
Clip  
 BeCu acc. to ASTM B194  
 Temp. range: -40°C to +125°C

### CONTACTS SIZE 16

P/N	Plating (Contact area / body)
66101-7Q4-6210	min 1.27µm Au / min 0.125µm Au
66101-B2P-6210	min 0.4µm Au / 2.5µm Ni

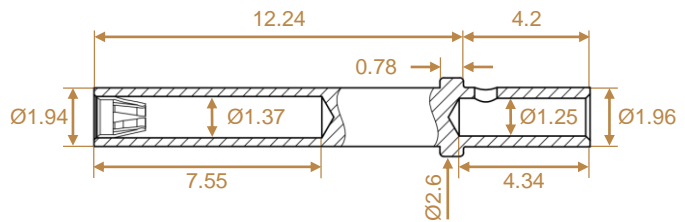


P/N	Plating (Contact area / body)
82080-7Q4	min 1.27µm Au / min 0.125µm Au
82080-B0	2.5µm Ni overall



### CONTACTS SIZE 20

P/N	Plating (Contact area / body)
66037-7Q4-1840	min 1.27µm Au / min 0.125µm Au
66037-B2P-1840	min 0.4µm Au / 2.5µm Ni



P/N	Plating (Contact area / body)
82070-7Q4	min 1.27µm Au / min 0.125µm Au
82070-B0	2.5µm Ni overall

