

Selecting Your Premo-Flex Solution

- 1 STEP 1**
Choose Your Connector
-OR-
Identify
 - Pitch
 - Circuit Count
 - Plating
- 2 STEP 2**
Specifications
 - Length
 - Flex Life Cycles
 - Contact Layout Type
 - A = Same Side Contacts
 - D = Opposite Side Contacts
- 3 STEP 3**
Additional Requirements
 - Temperature
 - Superior Retention
 - Speed
 - EMI

Series	Feature	Pitch (mm)	Plating Material	Flex Life Cycles	End Thickness (mm)	Contact Layout Type	Standard Lengths (mm)			
15166	Ultra-Flex	0.50	Tin	2.5M	0.30	A and D	30 to 305			
15167		1.00								
15168		1.25								
15366	Shielded	0.50		1M						
98266	Extra-Flexible	0.50		100K						
98267		1.00								
98268		1.25								
15266	Flexible	0.50		50K						
15267		1.00								
15268		1.25								
15466	High Retention	0.50	Gold	2.5M	0.20	A	51 to 305			
15018	High Retention	0.50								
15020	Flexible	0.50								
15039		1.00								
15049		1.25								
15016	High Retention	0.50		10K+				0.20	A	51 to 305
15031	Miniaturization / High Retention	0.30								
15032		0.30								
15015	Miniaturization	0.30								
15014	Miniaturization	0.25								

Low-Voltage Differential Signal (LVDS) Cables								
Series	Notched	Pitch (mm)	Plating Material	Mating Connectors	Temperature	End Thickness (mm)	Contact Layout Type	Standard Lengths (mm)
15021	No	0.50	Gold	502231, 502244	-40 to +80°C	0.30	A	51 to 610
15022	Yes			501786, 501864				
15023	Yes			503908				
15026	Yes			200485	-40 to +105°C	0.33		

A Cable Designed for Every Industry



CONSUMER

Cameras, drones, phones, handheld gaming devices, home appliances, TVs

MEDICAL

Handheld ultrasound, infusion pumps, medication dispensers, monitoring systems

DATAKOM

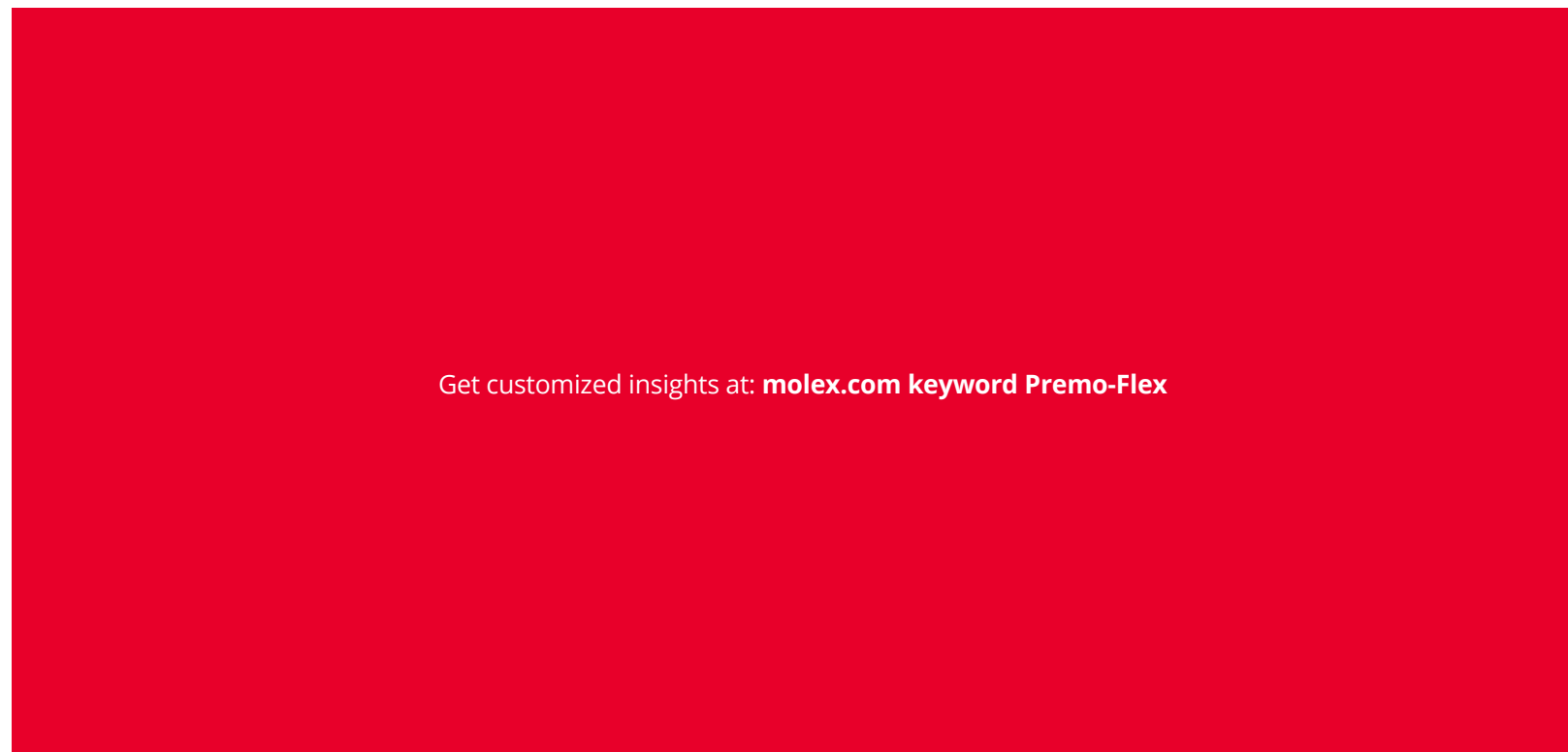
Printers, scanners, keyboards, servers, routers, computers

AUTOMOTIVE

Infotainment, LCD displays, GPS devices

INDUSTRIAL

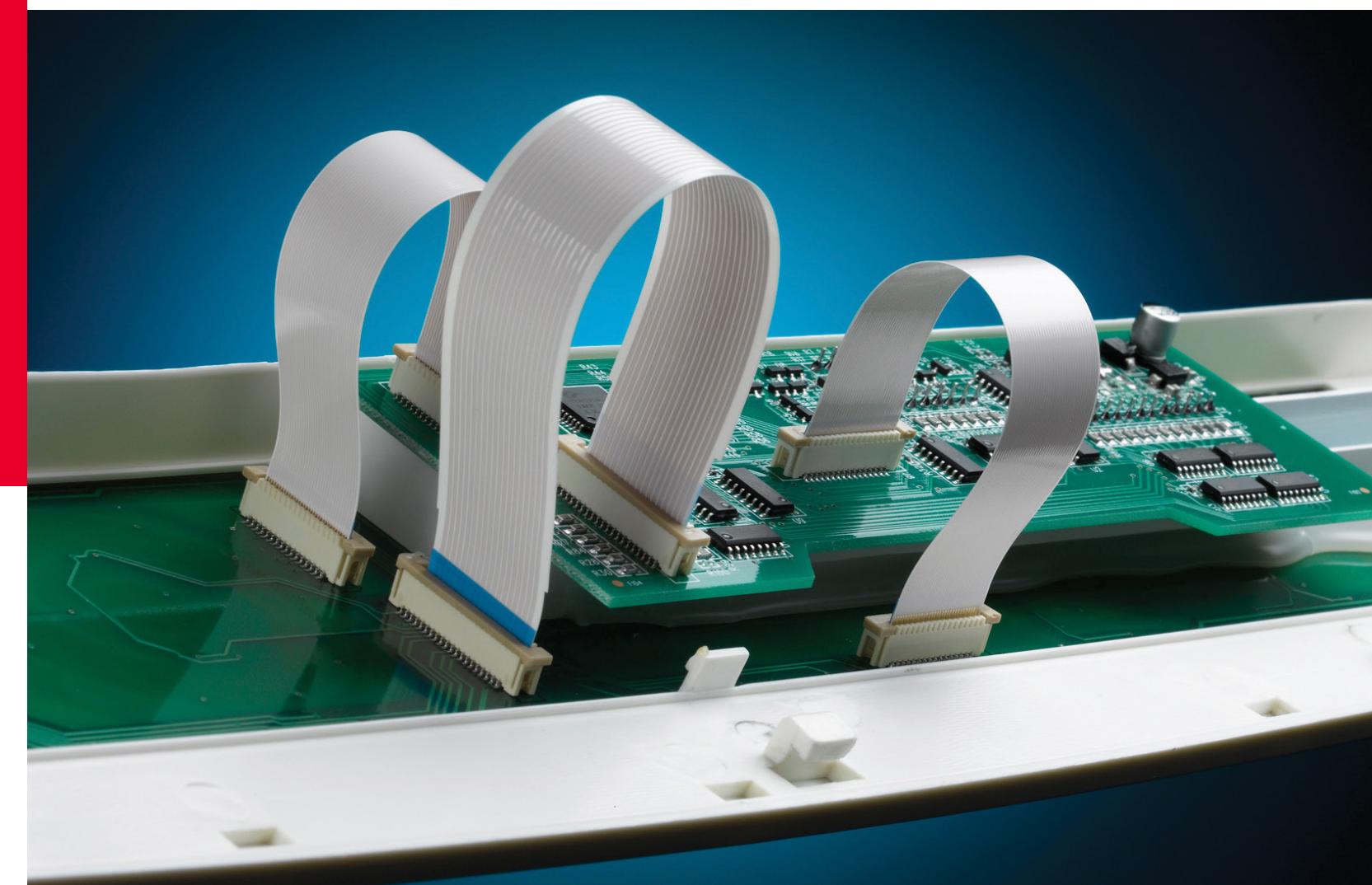
Robotics, generators, cooling systems



Get customized insights at: molex.com keyword Premo-Flex

PREMO-FLEX FLAT FLEXIBLE CABLES

www.molex.com
Keyword: Premo-Flex



Looking for more details?
SCAN FOR FULL SPECIFICATION DETAILS!



Premo-Flex Standard Solutions

Features and Advantages

- Design Flexibility**
4 to 80 Circuit Sizes
- Extended Flex Cycles**
10K to 2.5M
- Simple Assembly**

Why Molex?

- One-Stop Source for All 1:1 FCC Interconnect Solutions
- Gold Standard Customer Experience
- Low Program Requirements
- Same-Day Technical Support

FLEXIBLE			
FEATURES	TIN PLATING	GOLD PLATING	
50K Flex Life Cycles 0.27mm Insulated Thickness -40 to +105°C	15266 0.50mm Pitch 15267 1.00mm Pitch 15268 1.25mm Pitch	15020 0.50mm Pitch 15039 1.00mm Pitch 15049 1.25mm Pitch	



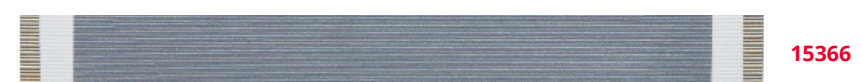
EXTRA-FLEXIBLE	
FEATURES	TIN PLATING
100K Flex Life Cycles 0.22mm Insulated Thickness -40 to +105°C	98266 0.50mm Pitch 98267 1.00mm Pitch 98268 1.25mm Pitch



ULTRA-FLEXIBLE			
FEATURES	TIN PLATING	GOLD PLATING	
2.5M Flex Life Cycles 0.12mm Insulated Thickness -40 to +105°C	15166 0.50mm Pitch 15167 1.00mm Pitch 15168 1.25mm Pitch	15120 0.50mm Pitch	



ELECTROMAGNETIC INTERFERENCE (EMI) PROTECTION	
FEATURES	TIN PLATING
First and Last Pin Grounded -40 to +105°C	15366 0.50mm Pitch

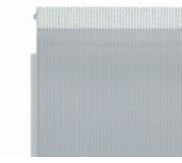
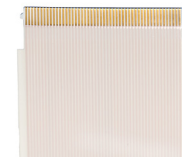
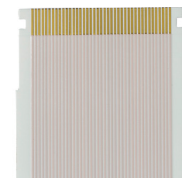


Premo-Flex Standard Solutions

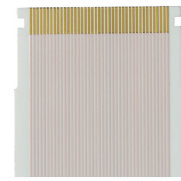
MINIATURIZATION		
FEATURES	GOLD PLATING	
0.12mm Insulated Thickness 10K+ Flex Life Cycles -40 to +105°C Staggered Pins	15014 0.25mm Pitch 15015 0.30mm Pitch 15031 0.30mm Pitch (notched) 15032 0.30mm Pitch (latching ears)	



SUPERIOR RETENTION		
FEATURES	TIN PLATING	GOLD PLATING
Notched or Latching Ears -40 to +105°C	15466 0.50mm Pitch (latching ears) 15467 1.00mm Pitch (latching ears)	15016 0.50mm Pitch (notched) 15018 0.50mm Pitch (latching ears) 15019 1.00mm Pitch (latching ears) 15031 0.30mm Pitch (notched) 15032 0.30mm Pitch (latching ears)



HIGH SPEED		
FEATURES	GOLD PLATING	DATA SPEED
100 Ohms Controlled Impedance 0.50mm Pitch -40 to +80°C	15021 LVDS Straight (termination) 15022 LVDS (notched) 15023 LVDS (notched) 15026 LVDS One-Touch	2 to 5 Gbps for 12" to 24" 5 to 10 Gbps for 2" to 10"



15021

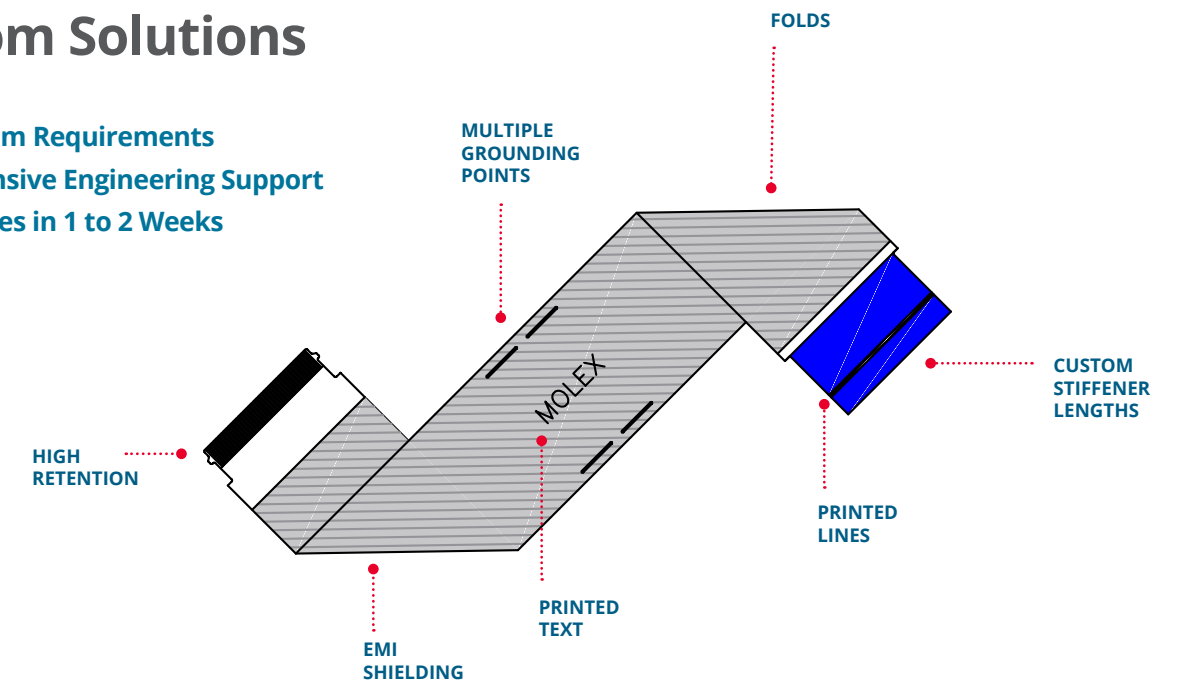
15022

15023

15026

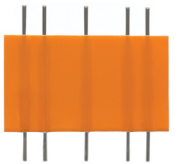
Custom Solutions

- Low Program Requirements
- Comprehensive Engineering Support
- Free Samples in 1 to 2 Weeks



Additional Offerings

RFCs (Round Flat Cables) provide ideal electrical connections between PCBs and create cost savings by eliminating the need for connectors.



Hybrid Solutions with round contacts at one end for through-hole soldering and flat contacts at the other.



Component Soldering attaches thermistors and resistors directly to cable with optional protective cover film.



Full Assembly: Premo-Flex flat flexible cable jumpers offer finished assemblies using Easy-On FFC FPC connectors to provide complete interconnect solutions.



Hot Bar Soldered Cables provide a durable connection by permanently affixing to a PCB via direct soldering.



Insulated Material (such as polyester, polyimide and Aramid) enable PCB connection solutions for unique temperature and environmental conditions.

