

NEW PRODUCT INTRODUCTIONS Q1 OVERVIEW



molex



molex

Discover Molex

We make a connected world possible by working together as a global team to enable technology that transforms the future and improves people's lives. Our customers rely on Molex to deliver breakthrough connectivity at scale – we help them master change and create the most important advances through powerful innovation, engineering excellent, and world-class manufacturing capabilities.

CONNECT WITH US





New Product Introductions

In this overview you will find a summary of each NPI package released in Q1 2021, including new additions to the Molex portfolio as well as extensions to established product ranges. The 'Learn More' button on each product page will take you to resources on [molex.com](https://www.molex.com). including datasheets, videos and more.

USEFUL LINKS

[Industry Pages](#)

Molex is driving innovation across a wide range of industries – view our industry pages to learn more about Molex's solutions for markets such as telecom, automotive, consumer, medical and more.

[Interactive Industry Guides](#)

Expanding range of interactive online tools to illustrate how our products are integrated into today's demanding applications.

[Capabilities Pages](#)

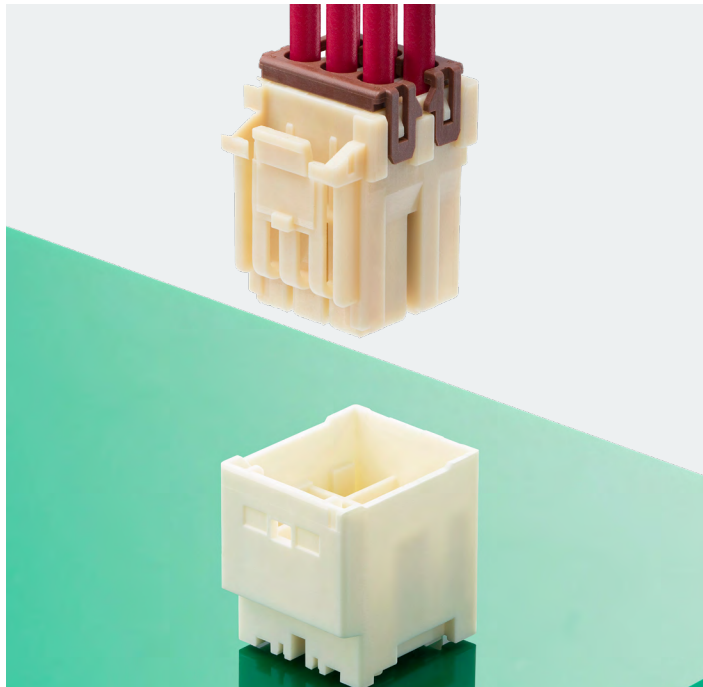
Learn more about Molex's capabilities are used and the advantages they bring to our customers.

[Technical Resources](#)

Discover a range of additional resources, including Digital Product Boards, articles and whitepapers, and competitor cross reference search.

Table of Contents

CP-3.3 Wire-to-Board Connectors	5
Off-the-Shelf Standard 0.093" Discrete Cable Assemblies	6
Mini-Fit Versa Color Connectors	7
USB Type-C Connectors, Product Extension	8
External LoRA Antennas	9
On-Metal Wi-Fi Antenna	10
Thin-Film Battery	11
Mini-Fit Max Connector	12
MX150 Sealed Connector System, Backshells	13
Off-the-Shelf Super Sabre Cable Assemblies	14
Off-the-Shelf EdgeLock Discrete Cable Assemblies	15
Mini-Fit Sigma Plugs	16
Micro-One Wire-to-Board Connector, Glow-Wire and Potting Capable Headers	17
Mini50 Sealed Wire-to-Device Receptacles, Dual Row	18
Ultra-Fit Single Row Cable Assemblies	19
Mizu-P25 Pre-Crimped Leads	20
USB Type-C	21
Multi-Hub 5-in-1 Antenna	22
Temperature Sensor Cable Assemblies, Epoxy-Coated Thermistors	23



CP-3.3 Wire-to-Board Connectors

SERIES NUMBER
212209, 212210, 212213, 50397

[LEARN MORE](#)

Glow wire compliant and potting capable CP-3.3 Wire-to-Board Connectors feature full keying and color pairing to prevent mis-mating and enhance user safety in consumer electronics, white goods, industrial and medical applications

FEATURES

- Wide spectrum of housing colors
- Polarization keys on housing rib
- Inertia Lock feature on housing
- Glow-wire capable
- Housing ribs between each cavity of the mated housings

APPLICATIONS

- Industrial Automation
- Consumer
- Automotive
- Medical





Off-the-Shelf Standard 0.093" Discrete Cable Assemblies

SERIES NUMBER
216290, 216291, 216292, 216293

[LEARN MORE](#)

Standard .093 Discrete Cable Assemblies deliver an off-the-shelf solution with a variety of cable lengths and up to 12.0A current rating

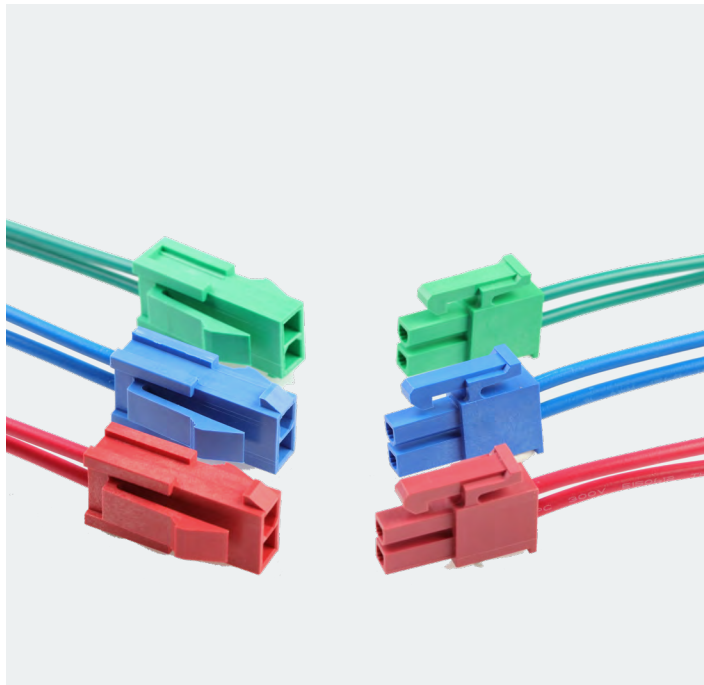
FEATURES

- Positive locking
- Panel-mount options
- Polarized header versions available in 6.70mm pitch size
- Keying and polarizing features
- High-current terminals and double crimp options

APPLICATIONS

- Consumer
- Data/Communications
- Networking





Mini-Fit Versa Color Connectors

SERIES NUMBER
46992, 46993

[LEARN MORE](#)

Mini-Fit Versa offers color options along with its standard features to ensure quick connector identification and assembly ease

FEATURES

- Panel mount and vertical header options
- Visual color pairing (colors can be intermated)
- Robust latch design
- V-0 Glow Wire combination resin

APPLICATIONS

- Automotive
- Consumer
- Data/Communications
- Home Appliance
- Industrial Automation
- Medical
- Telecommunications





USB 2.0 Type-C Connectors

SERIES NUMBER
213716, 213083

[LEARN MORE](#)

New 16 Circuit USB 2.0 Type-C Connectors are suitable for compact, waterproof and fast charging applications

FEATURES

Supports 5.0A/100W power and up to 480 Mbps data rates

Friction design with spring shell

SMT soldering design

Top-mount, mid-mount and vertical

USB 2.0 type-c receptacles in 6, 14 and 16 circuit sizes

Compact connector design with 4 tabs

APPLICATIONS

Consumer

Aviation

Medical

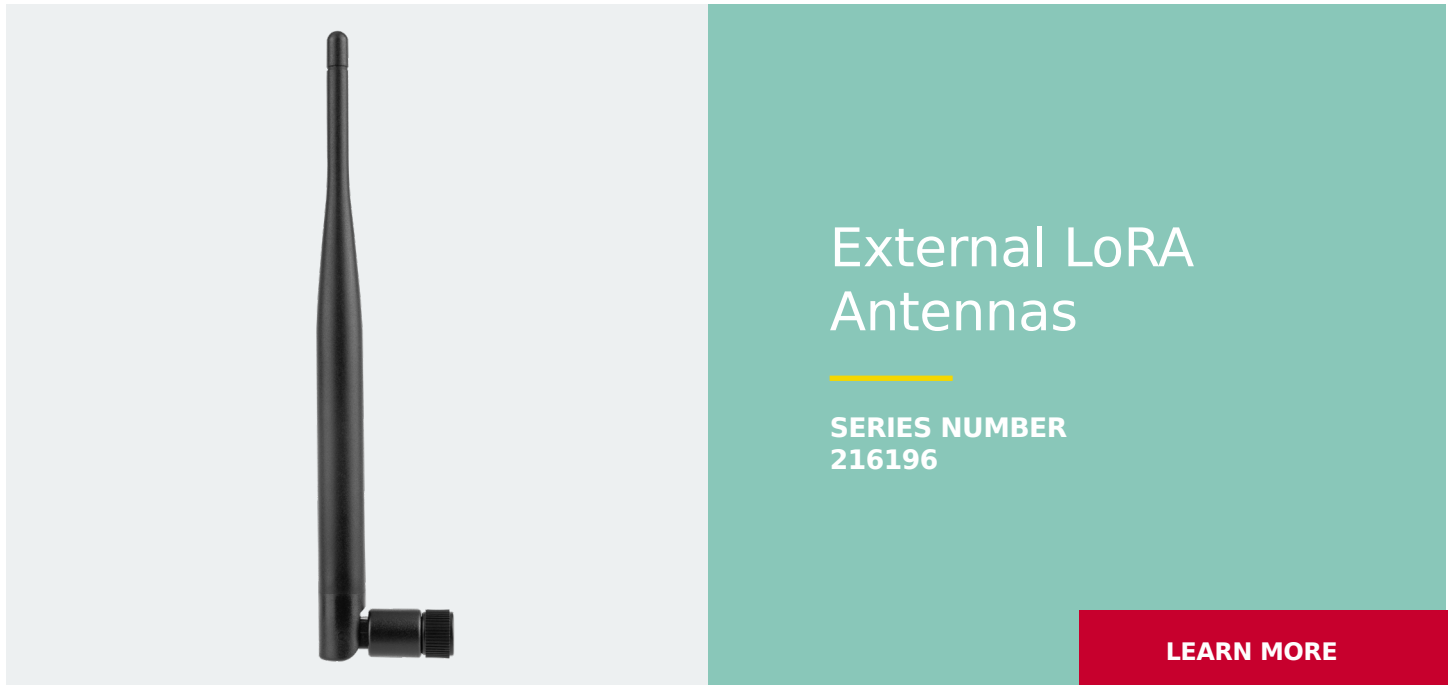
Industrial and

Commercial

Automotive

Smart Home Systems





Molex LoRa External Antennas are flexible whip antennas operating on LoRa frequency bands and offering high performance and 360° coverage

FEATURES

High-band antenna with 2.5dBi peak gain and 75% efficiency

Operates on 868 and 915 MHz LoRa frequencies

Hinge joint allows 90° rotation on the vertical plane and SMA-J connector allows 180° rotation on the horizontal plane

APPLICATIONS

Industrial
IoT





On-Metal Wi-Fi Antenna

SERIES NUMBER
215868

[LEARN MORE](#)

Off-the-shelf 2.4, 5 GHz Wi-Fi/Bluetooth External Antennas, available in various configurations, offer high RF performance and reliability for wireless and networking applications

FEATURES

High RF performance and reliability for wireless and networking applications

Metal surface mount

Uncompromised RF performance

Off-the-shelf 2.4, 5 GHz Wi-Fi/Bluetooth External Antennas

APPLICATIONS

Industrial

IoT





Thin-Film Battery

SERIES NUMBER
13331

[LEARN MORE](#)

Molex's Thin-Film Battery is a low-profile, flexible, disposable battery with a small footprint designed for low-profile single-use applications

FEATURES

Reduced distance between anode and cathode

No heavy metals offer an economical, environmentally safe alternative to lithium

Thin, flexible form factor

Flexible and low-profile

Available in 1.5 and 3V configurations

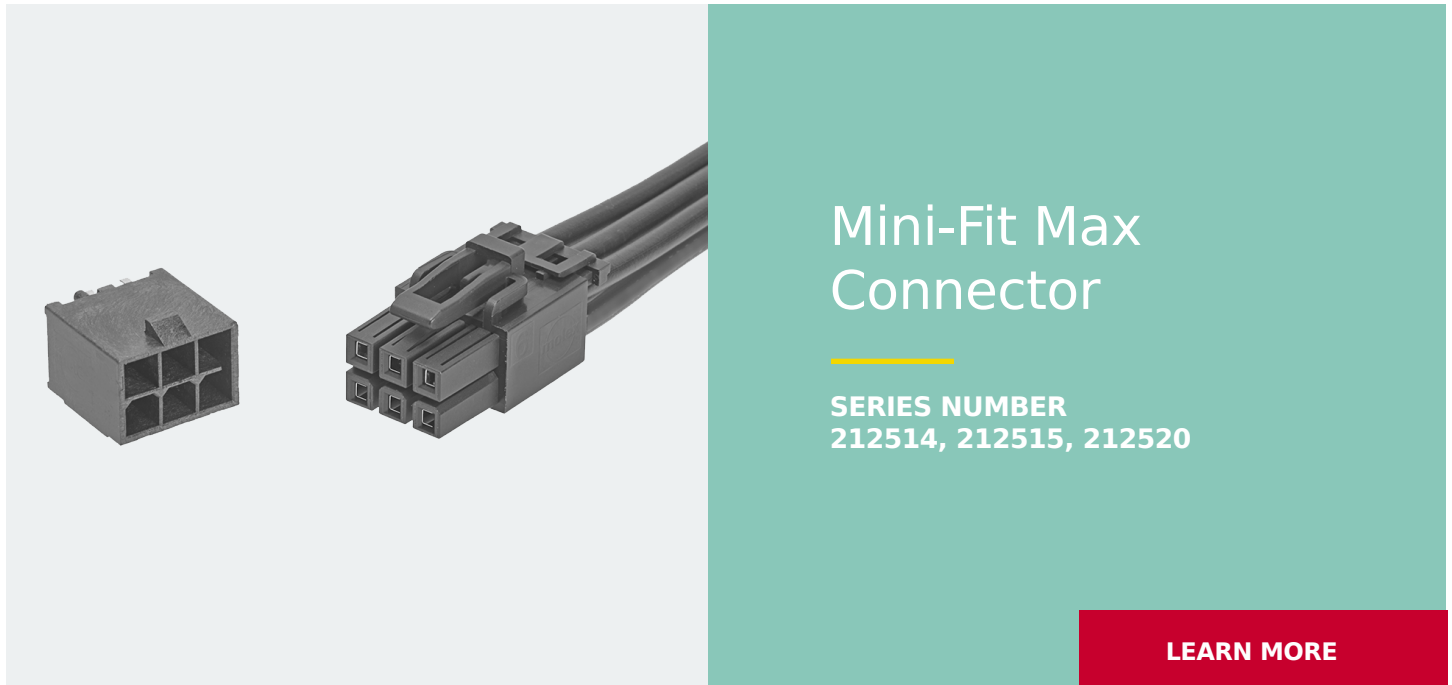
APPLICATIONS

Consumer

Medical

Industrial and IoT





Transcending mid-power connector products, the Mini-Fit Max wire-to-board connector provides 20.5A of current in a compact package and features a robust tangless terminal design with a TPA capable receptacle

FEATURES

- 94/V-O Glow-wire combination resin
- 4 Independent points of contact
- Keying and polarization
- TPA stop

APPLICATIONS

- Telecommunications/
Networking
- Industrial
- Home Appliance
- Commercial Vehicle





MX150 Sealed Connector System, Backshells

SERIES NUMBER
34950, 34951

[LEARN MORE](#)

Single- and dual-row backshells/wire dress covers provide additional protection to the wires out of the back of the connector

FEATURES

1-piece 3.5mm-pitch housing

Conforms to USCAR-2/USCAR-21/GMW3191

Temperature class 4 (-40 to +150°C) and 22.0A current rating

Single- and dual-row V0 versions available (UL1977 certified)

Single- and dual-row backshells/wire dress covers available in 2-, 3-, 6-, 8-, 12-, 16- and 20-circuit sizes

APPLICATIONS

Automotive

Commercial Vehicle





Off-the-Shelf Super Sabre Cable Assemblies

SERIES NUMBER
216010, 216011

[LEARN MORE](#)

Off-the-Shelf Super Sabre Cable Assemblies deliver a 34.0A current rating and offer a variety of cable lengths and power connectors with proven technology for long-term performance

FEATURES

- Current rating of 34.0A per blade and 600V
- Operating temperature up to +105°C, USCAR-2, level 3
- Silver-plated, high-conductivity alloy terminals
- Flat-blade terminal design with four independent points of electrical contact
- Positive latch and Terminal Position Assurance (TPA) features on receptacle
- Fully isolated terminals on both mating sides
- UL1977 and UL60950 “Finger Test” certified blade

APPLICATIONS

- Automotive
- Consumer
- Medical
- Telecommunications/
Networking



Off-the-Shelf EdgeLock Discrete Cable Assemblies

SERIES NUMBER
216330, 216331

[LEARN MORE](#)

Off-the-Shelf EdgeLock Discrete Cable Assemblies offer space savings, positive locking for secure mating and a variety of cable lengths

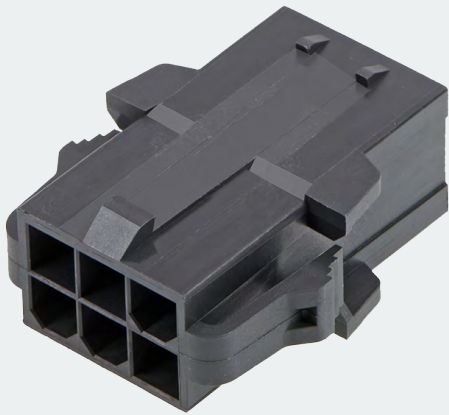
FEATURES

- Polarization rib on connector housing
- Locking feature on the reverse side of crimp terminal
- Dual cantilever crimp terminal design with embossed contact points

APPLICATIONS

- Consumer
- Industrial
- Solid State Lighting





Mini-Fit Sigma Plugs

SERIES NUMBER

172762, 172767, 200471, 200488

[LEARN MORE](#)

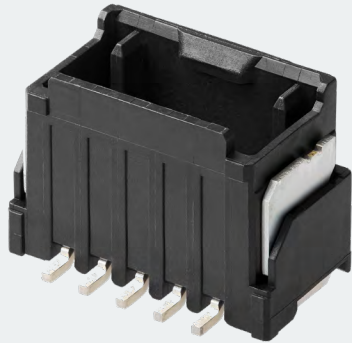
Mini-Fit Sigma Connectors feature a slim profile design that delivers 11.5A for a wide range of applications

FEATURES

- Fully isolated terminals
- Polarized mating geometry
- Receptacles and plugs accept both standard Mini-Fit and Mini-Fit Plug crimp terminals
- Positive locking housings
- Terminals feature a patented, elongated dimple design
- Blind-mating interface
- Terminal position assurance (TPA) with secondary locking feature
- Panel mount and vertical header options
- Visual color pairing (colors can be intermated)
- V-0 Glow Wire combination resin

APPLICATIONS

- Automotive
- Consumer
- Data/Communications
- Home Appliance
- Industrial Automation
- Medical
- Telecommunications/
Networking



Micro-One Wire-to-Board Connector, Glow-Wire and Potting Capable Headers

SERIES NUMBER
217063, 217064

[LEARN MORE](#)

Compact Micro-One Wire-to-Board Connector with potting capability, providing secure electrical contact, superior mating retention and protection against harsh environment conditions

FEATURES

- Independent secondary lock (ISL)
- 2- to 8- circuit vertical and right-angle header assembly
- Potting liquid (up to 7.00 mm height)
- 2.00mm pitch low profile design
- UL certified connectors

APPLICATIONS

Consumer
Industrial





Mini50 Sealed Wire-to-Device Receptacles, Dual Row

SERIES NUMBER
34967, 34894, 34905

[LEARN MORE](#)

Delivering significant space savings over traditional USCAR 0.64mm connectors, Mini50 Sealed Wire-to-Device Receptacles utilize smaller pins, terminals and wire gauges while providing protection from water and dust ingress

FEATURES

- Cavity plug available
- Independent secondary lock (ISL) terminal-retention feature
- Optional CPA
- Reduced package sizes
- Polarization Options

APPLICATIONS

- Automotive
- Transportation





Ultra-Fit Single Row Cable Assemblies

SERIES NUMBER
217465, 217466

[LEARN MORE](#)

Off-the-Shelf Ultra-Fit Cable Assemblies deliver an 11.0 to 14.0A current rating and offer a variety of cable lengths with the tangless feature that allows the terminal locking mechanism to be incorporated into the receptacle housing

FEATURES

- Multiple mechanically keyed color-coded options
- Optional TPA (terminal position assurance) retainer
- Positive-lock housing with anti-snap design
- Terminal interface with 6 independent points of contact (split-box terminal design)
- Internal locking mechanism on tangless receptacles
- Inertia-enhanced latch on tangless receptacles
- Ultra-low mating force terminal
- Fully isolated terminals
- Multi-color cable configurations with Ultra-Fit TPA Connectors available off the shelf

APPLICATIONS

- Automotive
- Consumer
- Defense
- Industrial
- Medical
- Telecommunications/
Networking



Mizu-P25 Pre-Crimped Leads

SERIES NUMBER

217520, 217521, 217522, 217523,
217841, 217842, 217843

[LEARN MORE](#)

Designed to meet the needs of environmentally challenging automotive and non-automotive applications, Molex's Mizu Sealed Connectors offer vibration resistance and superior protection against dust and water

FEATURES

- Pre-crimped and fully tested cables
- Available in 75.00 to 600.00mm lengths
- Leads crimped on both ends UL listed cables
- Decrease time to market
- Works well for all prototype and pre-production requirements
- Assures high-quality approved materials
- Helps customers choose the right connector before investing in application tooling

APPLICATIONS

- Automotive
- Consumer
- Industrial/Industrial
- Automation



USB Type-C

SERIES NUMBER
216989, 216990, 217175, 217176,
217177, 217178, 217179, 217180,
217182, 217183, 217184

[LEARN MORE](#)

The expanded family of compact USB Type-C Connectors supports up to 5.0A current and 40 Gbps speeds, and offers waterproof, robust, reliable connectivity in consumer, industrial, and IoT devices as well as other high-speed I/O applications

FEATURES

- Metal shell for strength/robustness
- Supports 5.0A/100W power
- IPx8 rating
- Long outer shell
- One-Row SMT soldering pin design
- IPx5 rating
- LSR (liquid silicon rubber) molded seal ring

- ### APPLICATIONS
- Consumer
 - Aviation
 - Medical
 - Industrial
 - Automotive
 - Connected Home





Multi-Hub 5-in-1 Antenna

SERIES NUMBER
216589

[LEARN MORE](#)

The Molex Multi-hub 5-in-1 Antenna features 2 x 5G, 2 x Wi-Fi and 1 x GPS functionalities with an IP67 rating and easy mounting in a low-profile design, making it ideal for advanced commercial vehicle and wireless applications

FEATURES

5-in-1 antenna with built-in cellular (LTE, 5G) MIMO *2, Wi-Fi (tri-band) *2 and GPS features

SMA connector

Backside adhesive mounting

Compact footprint

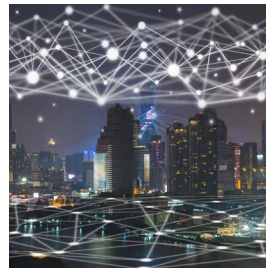
Metal surface mount

APPLICATIONS

Commercial Vehicles

IoT

Telecommunications/
Networking





Temperature Sensor Cable Assemblies, Epoxy-Coated Thermistors

SERIES NUMBER
215270, 215272, 215274, 215279

[LEARN MORE](#)

Molex's Temperature Sensor Cable Assemblies are available in a variety of beta values, resistances, lengths and temperature ranges to meet a diverse range of applications. The Epoxy Coated Temperature Sensor Cable Assemblies include a thermal conductive epoxy to deliver a market-ready solution for temperature sensing

FEATURES

- UL certified, environmentally friendly connectors
- Potted with thermally conductive epoxy
- Ring terminal mounting tab
- Compact temperature sensing solution

APPLICATIONS

- Consumer
- Home Appliance
- Industrial

