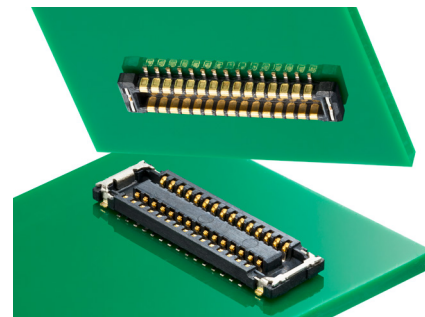


SlimStack Board-to-Board Connectors, 0.40mm Pitch, B8 Series

molex

Robust 0.40mm SlimStack B8 Series Board-to-Board connectors with CleanPoint contact design guard against contamination and damage, making them ideally suited for mobile device applications

Building reliability into connector designs is critical. As devices continue to increase in value and complexity in the future, designers will need to stabilize connections to avoid costly rework and repair. During the production of flex-to-board jumpers, flux or dust can settle on contacts and disrupt signal continuity; to avoid this, Molex's B8 series includes a CleanPoint contact design with a beveled shape that removes flux and other contaminants, providing a more stable electrical signal.



Features and Advantages

Cover Nail

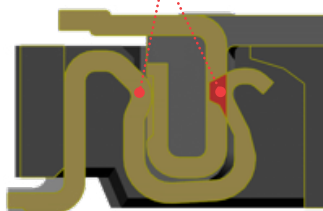
Protects housing from damage during blind mating or zippering. Offers housing protection up to a force of 50N and 0.80mm displacement

SlimStack B8 CleanPoint Contact

Removes foreign materials such as flux and provides superior electrical reliability

Dual-Contact Design

Absorbs shock to maintain stable signal



SlimStack B8 Series Plug

SlimStack B8 Series Receptacle

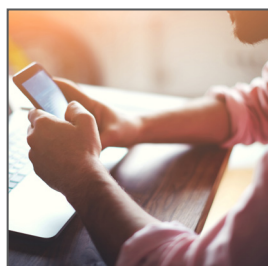
Top Housing Wall

Prevents the terminal from lifting up due to "zippering" or angled unmating

Applications

Mobile Devices

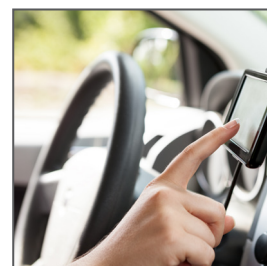
- Smartphones
- Tablet PCs
- Wearable Devices
- Portable Audio
- Portable Navigation Equipment



Smartphone



Wearables



Portable Navigation

SlimStack Board-to-Board Connectors, 0.40mm Pitch, B8 Series



Specifications

REFERENCE INFORMATION

Packaging: Embossed Tape on Reel
 Designed In: Millimeters
 RoHS: Yes
 Halogen Free: Low halogen

ELECTRICAL

Voltage (max.): 50V
 Current (max.): 0.3A per circuit
 Contact Resistance (max.): 80 milliohms
 Dielectric Withstanding Voltage: 250V AC
 Insulation Resistance (min.): 100 Megohms

MECHANICAL

Durability (max.): 30 cycles

PHYSICAL

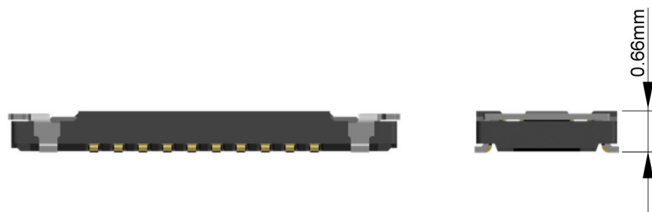
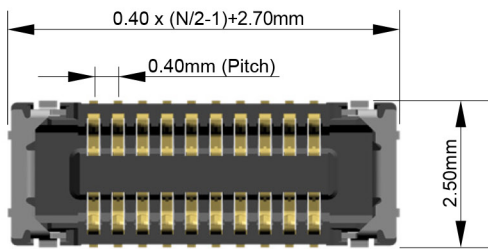
Housing: LCP, UL94V-0, Black
 Contact: Copper Alloy
 Plating:
 Contact Area – Gold
 Solder Tail Area – Gold
 Underplating – Nickel
 Operating Temperature: -40 to +85°C

Dimensions

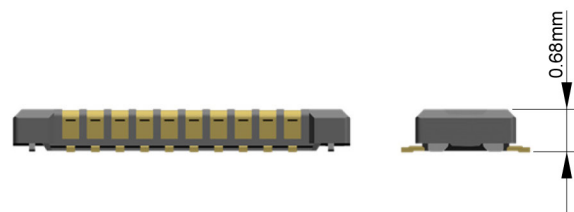
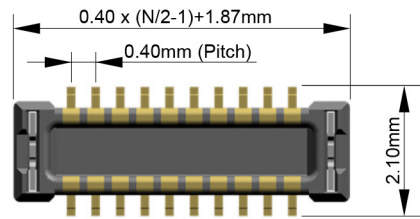
* Refer to drawing for detail dimension

N: Circuit Size

Receptacle



Plug



Ordering Information

Order No.		Mated Height (mm)	Mated Width (mm)	Circuits
Receptacle	Plug			
505550 -**20	505551 -**20	0.80	2.50	10, 16, 20, 24, 30, 34, 40, 50, 60

** : Circuit Size

www.molex.com/link/slimstack.html

Molex is a registered trademark of Molex, LLC in the United States of America and may be registered in other countries; all other trademarks listed herein belong to their respective owners.