

# HellermannTyton ADAPTERS & ACCESSORIES



AN EXTENSIVE LINE OF  
EMI / RFI ADAPTERS &  
ACCESSORIES FOR USE  
WITH MOULDED SHAPES

\*see inside cover for photo details

## GENERAL INFORMATION

### MISSION

HellermannTyton's mission is to provide innovative solutions, with customer satisfaction as our first priority. We aspire, through global leadership and quality products that add value to electrical and communication networks, to be the customers' partner of choice. We aim to achieve world class operational excellence for the benefit of our customers, our employees and the interaction of our business with the environment.

### ABOUT US

The international HellermannTyton group has been present in the UK for over 80 years with 2013 being their 80th year! HellermannTyton has two manufacturing sites in the UK; Manchester and Plymouth together with Distribution centres in Aldridge, Northern Ireland and Southern Ireland. The Manchester facility is one of three European design facilities, alongside Germany and France, in addition we work closely with our colleagues in USA and Japan.

More than 3,000 people are employed within HellermannTyton across the world, over 500 in the UK alone, focussing on providing high-quality services locally. Customer satisfaction is our first priority!

A wide range of injection moulding products are manufactured at our Manchester site - from tried and tested standard cable ties to complex products for specific applications and tailor-made developments for our customers. Research and development being a major part of the operation facilities.

At our new state of the art Plymouth factory novel heat shrinkable components, extruded cable management products and a wide range of identification systems are produced - many designed to customer specific requirements by a strong team of material and design professionals.

The highest standards of development and production are brought together under one roof. Our friendly and competent sales and logistics experts are on hand to ensure that you can always count on us, whatever your requirements may be.

### PHILOSOPHY

**Your satisfaction is our goal:** Our professional customer service and the high quality of our products shapes the foundation of your trust in us. We are always working to make our services even better.

**Perfect service right around the globe:** Together with our worldwide sales partners, we are there for you in 34 countries, no matter where you are. Use our global strength to your local advantage!

**Innovation is a key to success:** Our many years of experience creates the foundation for our wide range of innovations. The expertise of our employees helps us to develop perfect cable management solutions worldwide.

**With our passion for perfection:** We are always working on finding creative and precise solutions for you - quickly, effectively and to successfully meet your needs.

**Partnership as a mutual foundation:** Strong teamwork is the primary focus of our relationship with our customers, suppliers and employees. Long lasting, reliable partnerships are what counts for us most, along with the durability of our products.

**Security at its highest level:** From manufacturing through to delivery, we meet the highest standards of quality driven by a quality management system that we implement throughout all of our production processes.

**Front Cover:** Marines from 4th Tank Battalion, Twentynine Palms, Calif., roll down a dirt road on their M1A1 Abrams Main Battle Tank during a day of training at Exercise African Lion 2012, April 13. AL-12 is a U.S. African Command-sponsored, Marine Forces Africa-led exercise involving various types of training including command post, live-fire and maneuvering, peace keeping operations, an intelligence capacity building seminar, aerial refueling/low-level flight training, as well as medical and dental assistance projects. The annual exercise is designed to improve interoperability and mutual understanding of each nation's military tactics, techniques and procedures. Photo by Cpl Tyler Main.

# HellermannTyton

#### DISCLAIMER

ALL INFORMATION IN THIS SPECIFICATION, INCLUDING ILLUSTRATIONS, IS BELIEVED TO BE RELIABLE. READERS, HOWEVER, SHOULD INDEPENDENTLY EVALUATE THE SUITABILITY OF EACH PRODUCT FOR THEIR APPLICATION. HELLERMANN TYTON MAKES NO WARRANTIES AS TO THE ACCURACY OR COMPLETENESS OF THE INFORMATION, AND DISCLAIMS ANY LIABILITY REGARDING ITS USE. SPECIFICATIONS ARE SUBJECT TO CHANGE WITHOUT NOTICE. IN ADDITION, HELLERMANN TYTON RESERVES THE RIGHT TO MAKE CHANGES—WITHOUT NOTIFICATION TO CUSTOMERS—TO PROCESSING OR MATERIALS THAT DO NOT AFFECT COMPLIANCE WITH ANY APPLICABLE SPECIFICATION.

Cage Code K0720

## HEAT SHRINKABLE MOULDED SHAPES

A Variety of Shapes, Sizes, Material, Adhesives & Transitions Available From Hellermann Tyton



### Heat Shrinkable Moulded Shapes Expertise

HellermannTyton heat shrinkable moulded shapes combine the advantages of quick, easy installation with high electric strength, mechanical toughness and superior chemical and environmental resistance. Our products offer important functional and cost saving benefits for electrical and electronic applications ranging from insulation and protection of individual components to fabrication of complete inter-connecting cable harness assemblies. Strain-relieving boots, transitions and connector backshell covers, as well as other specialised shapes, are available in a wide range of sizes and options. HellermannTyton's extensive product line includes low profile, bulbous and lipped types for use on circular and D-type connectors as well as complex multiway transitions. Only a minimum number of shapes are needed to cover a full range of applications as the products have high shrink ratios of up to 5:1.

### Applications

The use of our heat shrinkable moulded shapes in conjunction with our specialist heat shrinkable tubings makes it easy to fabricate complete jacketed wire and cable harnessing and interconnection systems of the highest quality. Heat shrinkable shapes are available for the complete range of electrical and electronic harnessing applications. They can be sealed with our special adhesives and encapsulants to ensure the proper degree of mechanical support, strain relief and environmental protection. Encapsulating the complete harnessing and interconnection system to the desired configuration is easily and neatly accomplished, with minimum weight and bulk.

### Choice of Materials

A range of specially formulated materials is available to meet a variety of performance requirements. Material selection can be made according to individual applications. We also have the ability to make customized materials to suit special requirements.

### Technical Capabilities

Our materials are formulated in our own laboratory and produced in the HellermannTyton factory. We have experience and knowledge of all major applications and offer full technical support from design through to prototyping, to service.

# HellermannTyton

#### DISCLAIMER

ALL INFORMATION IN THIS SPECIFICATION, INCLUDING ILLUSTRATIONS, IS BELIEVED TO BE RELIABLE. READERS, HOWEVER, SHOULD INDEPENDENTLY EVALUATE THE SUITABILITY OF EACH PRODUCT FOR THEIR APPLICATION. HELLERMANN TYTON MAKES NO WARRANTIES AS TO THE ACCURACY OR COMPLETENESS OF THE INFORMATION, AND DISCLAIMS ANY LIABILITY REGARDING ITS USE. SPECIFICATIONS ARE SUBJECT TO CHANGE WITHOUT NOTICE. IN ADDITION, HELLERMANN TYTON RESERVES THE RIGHT TO MAKE CHANGES—WITHOUT NOTIFICATION TO CUSTOMERS—TO PROCESSING OR MATERIALS THAT DO NOT AFFECT COMPLIANCE WITH ANY APPLICABLE SPECIFICATION.

Cage Code K0720

# TABLE OF CONTENTS

General Information.....	2
Moulded Shapes Information.....	3
Section A - Interface and Materials.....	6
Section B - Finish Code Table.....	8
Section C - Cable Entry Table.....	9
Section D - Shrink Boot Selection Guide.....	10
Straight VG Type Shrink Boots.....	12
Straight MIL Style Shrink Boots.....	13
90 Degree VG Style Shrink Boots.....	14
90 Degree MIL Style Shrink Boots.....	15
EMI/RFI Cable Preparation.....	16
Zetalok™ Installation Instructions.....	17
Introduction To Zetalock™.....	18
Zetalok™ Constant Force Springs.....	19
HT7002 - Straight Adapter, Wrench Flats, Interface A.....	20
HT7402 - 45 Degree Adapter, Wrench Flats, Interface A.....	21
HT7902 - 90 Degree Adapter, Wrench Flats, Interface A.....	22
HT7009 - Straight Adapter, Wrench Flats, Interface F.....	23
HT7409 - 45 Degree Adapter, Wrench Flats, Interface F.....	24
HT7909 - 90 Degree Adapter, Wrench Flats, Interface F.....	25
HT7006 - Straight Adapter, Wrench Flats, Interface H.....	26
HT7406 - 45 Degree Adapter, Wrench Flats, Interface H.....	27
HT7906 - 90 Degree Adapter, Wrench Flats, Interface H.....	28
Approved Source TACOM Cross Reference Guide.....	29



**DISCLAIMER**

ALL INFORMATION IN THIS SPECIFICATION, INCLUDING ILLUSTRATIONS, IS BELIEVED TO BE RELIABLE. READERS, HOWEVER, SHOULD INDEPENDENTLY EVALUATE THE SUITABILITY OF EACH PRODUCT FOR THEIR APPLICATION. HELLERMANN TYTON MAKES NO WARRANTIES AS TO THE ACCURACY OR COMPLETENESS OF THE INFORMATION, AND DISCLAIMS ANY LIABILITY REGARDING ITS USE. SPECIFICATIONS ARE SUBJECT TO CHANGE WITHOUT NOTICE. IN ADDITION, HELLERMANN TYTON RESERVES THE RIGHT TO MAKE CHANGES—WITHOUT NOTIFICATION TO CUSTOMERS—TO PROCESSING OR MATERIALS THAT DO NOT AFFECT COMPLIANCE WITH ANY APPLICABLE SPECIFICATION.

**Cage Code K0720**

## TABLE OF CONTENTS

TACOM Shield Sock Adapter Cross Reference Guide.....	30
HB Series - Straight Adapter, Shield Sock, Interface A.....	31
HB Series - 45 Degree Adapter, Shield Sock, Interface A.....	32
HB Series - 90 Degree Adapter, Shield Sock, Interface A.....	33
HB Series - Straight Adapter, Shield Sock, Interface F.....	34
HB Series - 45 Degree Adapter, Shield Sock, Interface F.....	35
HB Series - 90 Degree Adapter, Shield Sock, Interface F.....	36
HB Series - Straight Adapter, Shield Sock, Interface H.....	37
HB Series - 45 Degree Adapter, Shield Sock, Interface H.....	38
HB Series - 90 Degree Adapter, Shield Sock, Interface H.....	39
H Series - Straight Shrink Boot Adapter, Rotatable Coupling.....	40
H Series - 45 Degree Shrink Boot Adapter, Rotatable Coupling.....	41
H Series - 90 Degree Shrink Boot Adapter, Rotatable Coupling.....	42
H Series - 90 Degree Low Profile Shrink Boot Adapter, Rotatable Coupling.....	43
06xx024S Series - Straight, Non Detent Self Locking Adapter.....	44
06xx024Y - Straight, Non Detent Self Locking Adapter.....	44
06xx024A - 45 Degree, Non Detent Self Locking Adapter.....	45
06xx024R - 90 Degree, Non Detent Self Locking Adapter.....	46
06xx024X - 90 Degree Low Profile, Non Detent Self Locking Adapter.....	47
Section E - HTMR Memory Rings for EMI/RFI Applications.....	48
HM Series - Straight Memory Ring Adapter.....	49
HM Series - 45 Degree Memory Ring Adapter.....	50
HM Series - 90 Degree Memory Ring Adapter.....	51

**HellermannTyton**

**DISCLAIMER**

ALL INFORMATION IN THIS SPECIFICATION, INCLUDING ILLUSTRATIONS, IS BELIEVED TO BE RELIABLE. READERS, HOWEVER, SHOULD INDEPENDENTLY EVALUATE THE SUITABILITY OF EACH PRODUCT FOR THEIR APPLICATION. HELLERMANN TYTON MAKES NO WARRANTIES AS TO THE ACCURACY OR COMPLETENESS OF THE INFORMATION, AND DISCLAIMS ANY LIABILITY REGARDING ITS USE. SPECIFICATIONS ARE SUBJECT TO CHANGE WITHOUT NOTICE. IN ADDITION, HELLERMANN TYTON RESERVES THE RIGHT TO MAKE CHANGES—WITHOUT NOTIFICATION TO CUSTOMERS—TO PROCESSING OR MATERIALS THAT DO NOT AFFECT COMPLIANCE WITH ANY APPLICABLE SPECIFICATION.

**Cage Code K0720**

## SECTION A - INTERFACE & MATERIALS

TABLE 1 - CONNECTOR INTERFACE SPECIFICATION	
Order Code	Connector Class
A / A1*	MIL-DTL-5015 Crimp (MS3400-MS3406; MS3450-MS3459) MIL-DTL-26482 Series II (MS3470-MS3476) MIL-DTL-83723 Series I & III
B	MIL-DTL-5015 Solder (MS3100-MS3106) <b>Consult Factory for Ordering Details</b>
C / H1*	MIL-DTL-22992 Left Hand Thread
D / E1*	MIL-DTL-26482 Series I (MS3110-MS3116; MS3120-MS3126)
E / D1*	MIL-DTL-26500
F / F2*	MIL-DTL-38999 Series I & II
G	MIL-DTL-28840
H / F5*	MIL-DTL-38999 Series III & IV
J / G1*	MIL-DTL-81511 Series 1, 2, 3 & 4
K / P1*	MIL-DTL-83723 Series II
Q	ITT VEAM Reverse Bayonet

\* USED FOR 06xx024 SERIES ONLY

TABLE 2 - MATERIAL CODES	
Order Code	Material
1	Aluminum Alloy 6061
2	Nickel, Aluminum, Bronze
3	Brass
4	Stainless Steel (300 Series)
6	Aluminum (Reserved for some TACOM Numbers)
7	Stainless Steel (Reserved for some TACOM Numbers)

TABLE 3 - RECOMMENDED TORQUE VALUES	
SHELL SIZE	SUGGESTED TORQUE (IN-LB)
8, 9	35-40
10, 11	45-50
12, 13	55-60
14, 15	65-70
16, 17	75-80
18, 19	85-90
20, 21	95-100
22, 23	105-110
24, 25	115-120
28	125-130
32	145-150
36	170-175
40	185-190



**DISCLAIMER**

ALL INFORMATION IN THIS SPECIFICATION, INCLUDING ILLUSTRATIONS, IS BELIEVED TO BE RELIABLE. READERS, HOWEVER, SHOULD INDEPENDENTLY EVALUATE THE SUITABILITY OF EACH PRODUCT FOR THEIR APPLICATION. HELLERMANN TYTON MAKES NO WARRANTIES AS TO THE ACCURACY OR COMPLETENESS OF THE INFORMATION, AND DISCLAIMS ANY LIABILITY REGARDING ITS USE. SPECIFICATIONS ARE SUBJECT TO CHANGE WITHOUT NOTICE. IN ADDITION, HELLERMANN TYTON RESERVES THE RIGHT TO MAKE CHANGES—WITHOUT NOTIFICATION TO CUSTOMERS—TO PROCESSING OR MATERIALS THAT DO NOT AFFECT COMPLIANCE WITH ANY APPLICABLE SPECIFICATION.

CONTACT HTY FOR INFO

## SECTION A - INTERFACE & MATERIALS

**TABLE 4 - CONNECTOR INTERFACE TABLE**

A	D	E	F	G	H	A THREAD	B REF	C REF
	08	08	08			7/16 - 28 UNEF	0.650	0.269
					09 (A)	M12 X 1 - 6H	0.770	0.270
08						1/2 - 20 UNF	0.650	0.270
03	10	10	10			9/16 - 24 UNEF	0.770	0.520
					11 (B)	M15 X 1 - 6H	0.820	0.410
10						5/8 - 24 UNEF	0.770	0.375
	12		12			11/16 - 24 UNEF	0.890	0.645
					13 (C)	M18 X 1 - 6H	0.940	0.520
12		12		11 (A)		3/4 - 20 UNEF	0.940	0.511
	14	14	14			13/16 - 20 UNEF	1.020	0.730
					15 (D)	M22 X 1 - 6H	1.070	0.650
14				13 (B)		7/8 - 20 UNEF	1.020	0.585
	16	16	16			15/16 - 20 UNEF	1.150	0.855
					17 (E)	M25 X 1 - 6H	1.210	0.780
16				15 (C)		1 - 20 UNEF	1.210	0.710
18	18	18	18			1 1/16 - 18 UNEF	1.230	0.789
					19 (F)	M28 X 1 - 6H	1.360	0.880
				17 (D)		1 1/8 - 18 UNEF	1.360	0.810
20	20	20	20			1 3/16 - 18 UNEF	1.360	0.914
					21 (G)	M31 X 1 - 6H	1.480	1.010
				19 (E)		1 1/4 - 18 UNEF	1.530	0.946
22	22	22	22			1 5/16 - 18 UNEF	1.480	1.039
					23 (H)	M34 X 1 - 6H	1.600	1.150
24	24	24	24	23 (F)		1 7/16 - 18 UNEF	1.730	1.154
					25 (J)	M37 X 1 - 6H	1.700	1.260
61						1 1/2 - 18 UNEF	1.670	1.230
				25 (G)		1 9/16 - UNEF	1.820	1.222
28						1 3/4 - 18 UNS	1.970	1.389
				29 (H)		1 7/8 - 16 UN	2.190	1.422
32						2 - 18 UNS	2.220	1.635
				33 (J)		2 1/16 - 16 UNS	2.440	1.672
36						2 1/4 - 16 UN	2.470	1.850
40						2 1/2 - 16 UN	2.720	2.065



**DISCLAIMER**

ALL INFORMATION IN THIS SPECIFICATION, INCLUDING ILLUSTRATIONS, IS BELIEVED TO BE RELIABLE. READERS, HOWEVER, SHOULD INDEPENDENTLY EVALUATE THE SUITABILITY OF EACH PRODUCT FOR THEIR APPLICATION. HELLERMANN TYTON MAKES NO WARRANTIES AS TO THE ACCURACY OR COMPLETENESS OF THE INFORMATION, AND DISCLAIMS ANY LIABILITY REGARDING ITS USE. SPECIFICATIONS ARE SUBJECT TO CHANGE WITHOUT NOTICE. IN ADDITION, HELLERMANN TYTON RESERVES THE RIGHT TO MAKE CHANGES—WITHOUT NOTIFICATION TO CUSTOMERS—TO PROCESSING OR MATERIALS THAT DO NOT AFFECT COMPLIANCE WITH ANY APPLICABLE SPECIFICATION.

**Cage Code K0720**

## SECTION B - FINISH CODE TABLE

**TABLE 1 - Common Material and Finish Codes**

Order Code	AS85049 Ref.	Material	Finish
C / N*	N	Aluminum	Electroless nickel - In accordance with AMS-C-26074 or AMS2404. -65 to +200 °C
H / CC*	N/A	Aluminum	Clear Cadmium - SAE-AMS-QQ-P-416 Type II Class 2 over electroless nickel, 1000 Hour Salt Spray, Conductive -65 to +175°C
B / CN*	W	Aluminum	Cadmium, Olive drab over suitable underplate, 1000 hour salt spray -65 to +175 °C
P	X	Aluminum	Nickel fluorocarbon polymer. Nickel with fluorocarbon polymer additives over a suitable underplate to withstand
D	Y	Aluminum	Pure dense electrodeposited aluminum in accordance with MIL-DTL-83488, Type II, to withstand 500 hours of salt
T	Z	Aluminum	Zinc nickel, Black, in accordance with ASTM B841 over suitable underplate to withstand 1000 hours of salt spray testing.
ZB	N/A	Aluminum	Zinc-Cobalt, Olive Drab, ASTM B 840 Grade 6 Type D over electroless nickel, 350 Hour Salt Spray, Conductive -65 to +175°C
ZT	N/A	Aluminum	Zinc-Cobalt, Black, ASTM B 840 Grade 6 Type D over electroless nickel 350 Hour Salt Spray, Conductive -65 to +175°C
KB	B	Stainless Steel	Black cadmium - In accordance with AMS-QQ-P-416, Type II, Class 3. -65 to +175 °C
J	S	Stainless Steel	Passivate - In accordance with AMS-QQ-P-35, AMS 2700, or ASTM A 967. -65 to + 200 °C
8	N/A	Aluminum	Electroless Nickel (Reserved for some TACOM Numbers)
9	N/A	Stainless Steel	Passivate (Reserved for some TACOM Numbers)

**\* USED FOR 06xx024 SERIES ONLY**



**DISCLAIMER**

ALL INFORMATION IN THIS SPECIFICATION, INCLUDING ILLUSTRATIONS, IS BELIEVED TO BE RELIABLE. READERS, HOWEVER, SHOULD INDEPENDENTLY EVALUATE THE SUITABILITY OF EACH PRODUCT FOR THEIR APPLICATION. HELLERMANN TYTON MAKES NO WARRANTIES AS TO THE ACCURACY OR COMPLETENESS OF THE INFORMATION, AND DISCLAIMS ANY LIABILITY REGARDING ITS USE. SPECIFICATIONS ARE SUBJECT TO CHANGE WITHOUT NOTICE. IN ADDITION, HELLERMANN TYTON RESERVES THE RIGHT TO MAKE CHANGES—WITHOUT NOTIFICATION TO CUSTOMERS—TO PROCESSING OR MATERIALS THAT DO NOT AFFECT COMPLIANCE WITH ANY APPLICABLE SPECIFICATION.

**Cage Code K0720**

## SECTION C - CABLE ENTRY TABLE

TABLE 1 - CABLE ENTRY				
ENTRY CODE	CABLE ENTRY I.D. REF	EMI TERMINATION O.D. REF	LIP O.D. REF	ZETALOK™ SIZE
02	0.125	0.221	0.372	HE050
03	0.188	0.284	0.438	HE050
04	0.250	0.346	0.500	HE100
05	0.312	0.408	0.562	HE100
06	0.375	0.471	0.625	HE100
07	0.438	0.534	0.688	HE100
08	0.500	0.596	0.750	HE200
09	0.562	0.658	0.812	HE200
10	0.625	0.721	0.875	HE200
11	0.688	0.784	0.938	HE200
12	0.750	0.846	1.000	HE300
13	0.812	0.908	1.062	HE300
14	0.875	0.971	1.125	HE300
15	0.938	1.034	1.188	HE300
16	1.000	1.096	1.250	HE300
17	1.062	1.158	1.312	HE300
18	1.125	1.221	1.375	HE300
19	1.188	1.284	1.448	HE300
20	1.250	1.346	1.500	HE400
21	1.314	1.410	1.574	HE400
22	1.375	1.471	1.625	HE400
23	1.440	1.536	1.700	HE400
24	1.500	1.596	1.750	HE400
26	1.625	1.721	1.872	HE400

**HellermannTyton**

**DISCLAIMER**

ALL INFORMATION IN THIS SPECIFICATION, INCLUDING ILLUSTRATIONS, IS BELIEVED TO BE RELIABLE. READERS, HOWEVER, SHOULD INDEPENDENTLY EVALUATE THE SUITABILITY OF EACH PRODUCT FOR THEIR APPLICATION. HELLERMANN TYTON MAKES NO WARRANTIES AS TO THE ACCURACY OR COMPLETENESS OF THE INFORMATION, AND DISCLAIMS ANY LIABILITY REGARDING ITS USE. SPECIFICATIONS ARE SUBJECT TO CHANGE WITHOUT NOTICE. IN ADDITION, HELLERMANN TYTON RESERVES THE RIGHT TO MAKE CHANGES—WITHOUT NOTIFICATION TO CUSTOMERS—TO PROCESSING OR MATERIALS THAT DO NOT AFFECT COMPLIANCE WITH ANY APPLICABLE SPECIFICATION.

**Cage Code K0720**

## SECTION D - SHRINK BOOT SELECTION

To simplify ordering and reduce overall cost, many HellermannTyton series' allow a shrink boot to be incorporated into the adapter part number. HellermannTyton will supply the specified shrink boot kitted with the adapter when the following 3 digit suffix is added to the adapter part number. The correct shrink boot size will be determined by HellermannTyton based on the tables below. If a different size is required please order the shrink boot as a separate item.

### PART NUMBER BREAKDOWN

**HA1-1403-1-B- S G U**

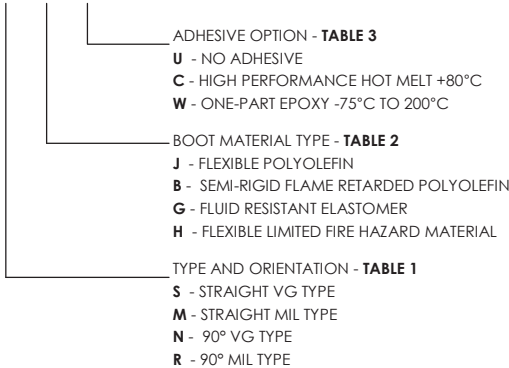


TABLE 1						
SEE TABLE 4 FOR ADDITIONAL CABLE ENTRIES						
SHELL SIZE	RELATED MIL SPEC INTERFACE	BACKSHELL STANDARD ENTRY	SHRINK BOOT TYPE AND ORIENTATION			
			ORDER CODE 'S'	ORDER CODE 'M'	ORDER CODE 'N'	ORDER CODE 'R'
			STRAIGHT VG TYPE SEE PAGE 12	STRAIGHT MIL TYPE SEE PAGE 13	90° VG TYPE SEE PAGE 14	90° MIL TYPE SEE PAGE 15
8, 9	A, D, E, F, H	04	152-42	129-4	1152-4	1121-4
10, 11	A, D, E, F, H	05	154-42	129-4	1152-4	1122-4
12, 13	A, D, E, F, H	06	154-42	130-4	1154-4	1122-4
14, 15	A, D, E, F, H	08	155-42	131-4	1155-4	1123-4
16, 17	A, D, E, F, H	10	155-42	131-4	1155-4	1124-4
18, 19	A, D, E, F, H	12	157-43	132-4	1156-4	1124-4
20, 21	A, D, E, F, H	14	157-43	132-4	1157-4	1125-4
22, 23	A, D, E, F, H	16	157-43	133-4	1157-4	1126-4
24, 25	A, D, E, F, H	16	157-43	133-4	1157-4	1126-4
28	A	18	157-43	134-4	1157-4	1126-4
32	A	20	158-43	134-4	1158-4	1127-4
36	A	22	158-43	135-4	1158-4	1127-4

TABLE 2 - SHRINK BOOT MATERIAL TYPE		
ORDER CODE	MIL STANDARD	DESCRIPTION / MATERIAL
J	MIL-I-81765 / TYPE II	FLEXIBLE POLYOLEFIN
B	MIL-I-81765 / TYPE I	SEMI-RIGID FLAME RETARDED POLYOLEFIN
G	VG95343 PART 6	FLUID RESISTANT ELASTOMER
H	NAVSEA 54617649	FLEXIBLE LIMITED FIRE HAZARD MATERIAL



**DISCLAIMER**

ALL INFORMATION IN THIS SPECIFICATION, INCLUDING ILLUSTRATIONS, IS BELIEVED TO BE RELIABLE. READERS, HOWEVER, SHOULD INDEPENDENTLY EVALUATE THE SUITABILITY OF EACH PRODUCT FOR THEIR APPLICATION. HELLERMANNTYTON MAKES NO WARRANTIES AS TO THE ACCURACY OR COMPLETENESS OF THE INFORMATION, AND DISCLAIMS ANY LIABILITY REGARDING ITS USE. SPECIFICATIONS ARE SUBJECT TO CHANGE WITHOUT NOTICE. IN ADDITION, HELLERMANNTYTON RESERVES THE RIGHT TO MAKE CHANGES—WITHOUT NOTIFICATION TO CUSTOMERS—TO PROCESSING OR MATERIALS THAT DO NOT AFFECT COMPLIANCE WITH ANY APPLICABLE SPECIFICATION.

**Cage Code K0720**

## SECTION D - SHRINK BOOT SELECTION

TABLE 3 - SHRINK BOOT ADHESIVE OPTIONS		
ORDER CODE	HELLERMANN/TYTON CALLOUT	DESCRIPTION / MATERIAL
U	N/A	UNCOATED - NO ADHESIVE
C	WM250	WM250 IS A HALOGEN FREE ADHESIVE WITH AN OPERATING TEMPERATURE OF -50°C TO +80°C
W	W24	W24 IS A HIGH PERFORMANCE ADHESIVE WITH AN OPERATING TEMPERATURE OF -75°C TO +200°C

TABLE 4 - OUTSIDE CABLE DIAMETER INFORMATION						
THIS TABLE SHOWS THE STANDARD SHRINK BOOT THAT WILL BE SUPPLIED BASED ON THE CABLE ENTRY OF THE ADAPTER. CONTACT HELLERMANN/TYTON FOR ADDITIONAL OPTIONS.						
ENTRY CODE	ADAPTER CABLE ENTRY I.D. REF	ADAPTER SHRINK BOOT LIP O.D. REF	ORDER CODE 'S'	ORDER CODE 'M'	ORDER CODE 'N'	ORDER CODE 'R'
02	0.125	0.375	N/A	N/A	N/A	N/A
03	0.188	0.438	152-42	N/A	1152-4	1121-4
04	0.250	0.500	152-42	129-4	1152-4	1121-4
05	0.312	0.562	154-42	129-4	1152-4	1122-4
06	0.375	0.625	154-42	130-4	1154-4	1122-4
07	0.438	0.688	154-42	130-4	1154-4	1123-4
08	0.500	0.750	155-42	131-4	1155-4	1123-4
09	0.562	0.812	155-42	131-4	1155-4	1123-4
10	0.625	0.875	155-42	131-4	1155-4	1124-4
11	0.688	0.938	157-43	132-4	1156-4	1124-4
12	0.750	1.000	157-43	132-4	1156-4	1124-4
13	0.812	1.062	157-43	132-4	1156-4	1125-4
14	0.875	1.125	157-43	132-4	1157-4	1125-4
15	0.938	1.188	157-43	133-4	1157-4	1125-4
16	1.000	1.250	157-43	133-4	1157-4	1126-4
17	1.062	1.312	157-43	133-4	1157-4	1126-4
18	1.125	1.375	157-43	134-4	1157-4	1126-4
19	1.188	1.448	158-43	134-4	1158-4	1126-4
20	1.250	1.500	158-43	134-4	1158-4	1127-4
21	1.314	1.574	158-43	134-4	1158-4	1127-4
22	1.375	1.625	158-43	135-4	1158-4	1127-4
23	1.440	1.700	158-43	135-4	1158-4	1128-4
24	1.500	1.750	158-43	135-4	1158-4	1128-4
26	1.625	1.872	159-43	136-4	1159-4	1128-4



**DISCLAIMER**

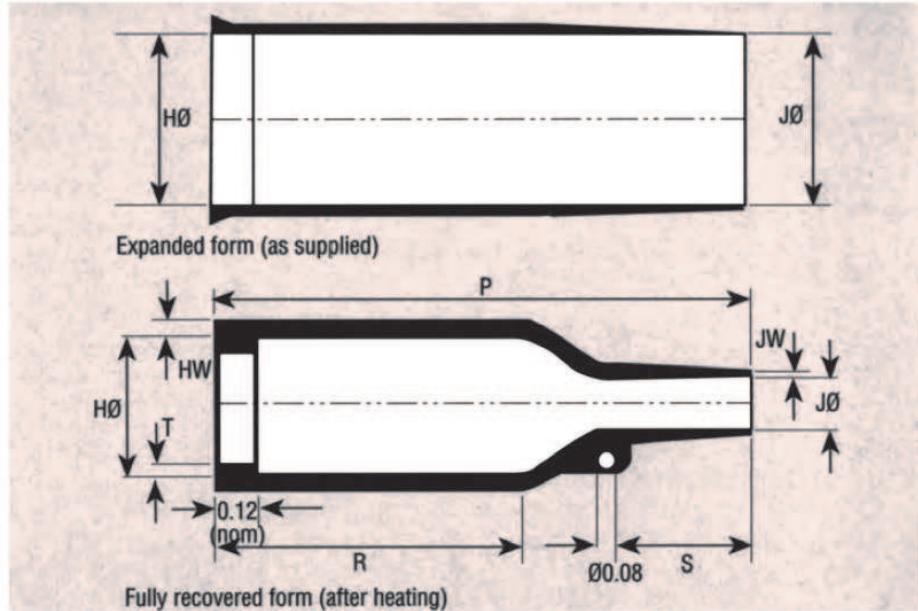
ALL INFORMATION IN THIS SPECIFICATION, INCLUDING ILLUSTRATIONS, IS BELIEVED TO BE RELIABLE. READERS, HOWEVER, SHOULD INDEPENDENTLY EVALUATE THE SUITABILITY OF EACH PRODUCT FOR THEIR APPLICATION. HELLERMANN/TYTON MAKES NO WARRANTIES AS TO THE ACCURACY OR COMPLETENESS OF THE INFORMATION, AND DISCLAIMS ANY LIABILITY REGARDING ITS USE. SPECIFICATIONS ARE SUBJECT TO CHANGE WITHOUT NOTICE. IN ADDITION, HELLERMANN/TYTON RESERVES THE RIGHT TO MAKE CHANGES—WITHOUT NOTIFICATION TO CUSTOMERS—TO PROCESSING OR MATERIALS THAT DO NOT AFFECT COMPLIANCE WITH ANY APPLICABLE SPECIFICATION.

**Cage Code K0720**

## STRAIGHT VG TYPE SHRINK BOOT

This style is used in conjunction with a circular grooved adaptor, providing strain relief and environmental sealing.

For VG shapes according to T07 add 'P' after Hellermann part number.



Dimensions apply to all materials unless otherwise indicated and are in inches.

VG Part No.	Hellermann Part No.	Expanded (Min)				Rec'd (Max)		Recovered dimensions fully shrunk					
		H	H -H matl	J	J -H matl	H	J	P ±10%	R ±10%	S nom	T ±20%	HW ±20%	JW ±20%
VG 95343 T06 B001A	* 152-42	0.94	0.94	0.94	0.94	0.41	0.24	1.50	0.82	0.39	0.04	0.06	0.02
VG 95343 T06 B 002A	* 153-42	0.98	0.98	0.35	0.35	0.55	0.14	2.17	1.10	0.63	0.04	0.07	0.02
VG 95343 T06 B 003A	* 154-42	1.18	1.18	1.18	1.18	0.55	0.24	2.17	1.26	0.51	0.04	0.07	0.04
VG 95343 T06 B 004A	* 155-42	1.22	1.22	1.22	1.22	0.71	0.28	2.64	1.38	0.71	0.04	0.07	0.04
VG 95343 T06 B 005A	* 156-42	1.42	1.42	1.42	1.42	0.89	0.33	3.15	1.65	0.79	0.04	0.08	0.04
VG 95343 T06 C 001A	* 157-43	1.69	1.69	1.69	1.69	1.10	0.39	3.90	2.36	0.79	0.07	0.09	0.04
VG 95343 T06 C 002A	* 158-43	2.36	2.36	2.36	2.36	1.38	0.63	5.12	2.83	1.50	0.07	0.13	0.06
VG 95343 T06 C 003A	* 159-43	2.60	2.60	2.60	2.60	1.77	0.67	6.73	3.54	1.97	0.08	0.15	0.08
VG 95343 T06 C 004A	160-43	3.23	3.19	3.23	3.19	2.28	1.06	8.39	4.45	2.44	0.08	0.15	0.15

### Non-standard products with reduced overall lengths

VG 95343 T 06 A 001 A	152-41	0.94	0.94	0.94	0.94	0.41	0.24	1.02	0.35	0.39	0.04	0.06	0.02
VG 95343 T 06 A 002 A	153-41	0.98	0.98	0.98	0.98	0.55	0.14	1.57	0.51	0.63	0.04	0.07	0.02
VG 95343 T 06 A 003 A	154-41	1.18	1.18	1.18	1.18	0.55	0.24	1.69	0.79	0.51	0.04	0.07	0.04
VG 95343 T 06 A 004 A	155-41	1.22	1.22	1.22	1.22	0.71	0.28	1.85	0.59	0.71	0.04	0.07	0.04
VG 95343 T 06 A 005 A	156-41	1.42	1.42	1.42	1.42	0.89	0.33	2.36	0.87	0.79	0.04	0.08	0.04
VG 95343 T 06 A 006 A	157-41	1.69	1.69	1.69	1.69	1.10	0.39	2.36	0.83	0.79	0.07	0.09	0.04
VG 95343 T 06 B 006 A	157-42	1.69	1.69	1.69	1.69	1.10	0.39	3.11	1.61	0.79	0.07	0.09	0.04
VG 95343 T 06 A 007 A	158-41	2.36	2.36	2.36	2.36	1.38	0.63	3.54	1.26	1.50	0.07	0.13	0.06
VG 95343 T 06 B 007 A	158-42	2.36	2.36	2.36	2.36	1.38	0.63	4.33	2.05	1.50	0.07	0.13	0.06
VG 95343 T 06 A 008 A	159-41	2.60	2.60	2.60	2.60	1.77	0.67	5.12	1.97	1.97	0.08	0.15	0.08
VG 95343 T 06 B 008 A	159-42	2.60	2.60	2.60	2.60	1.77	0.67	5.91	2.76	1.97	0.08	0.15	0.08
VG 95343 T 06 A 009 A	160-41	3.23	3.19	3.23	3.19	2.28	1.06	5.39	1.46	2.44	0.08	0.15	0.15
VG 95343 T 06 B 009 A	160-42	3.23	3.19	3.23	3.19	2.28	1.06	6.22	2.28	2.44	0.08	0.15	0.15

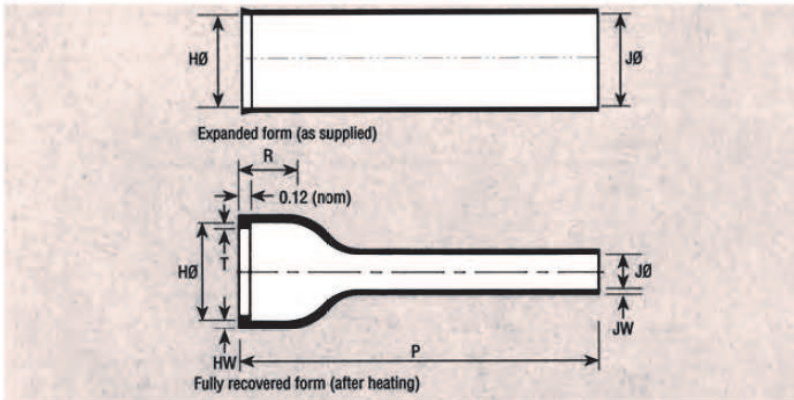


#### DISCLAIMER

ALL INFORMATION IN THIS SPECIFICATION, INCLUDING ILLUSTRATIONS, IS BELIEVED TO BE RELIABLE. READERS, HOWEVER, SHOULD INDEPENDENTLY EVALUATE THE SUITABILITY OF EACH PRODUCT FOR THEIR APPLICATION. HELLERMANN TYTON MAKES NO WARRANTIES AS TO THE ACCURACY OR COMPLETENESS OF THE INFORMATION, AND DISCLAIMS ANY LIABILITY REGARDING ITS USE. SPECIFICATIONS ARE SUBJECT TO CHANGE WITHOUT NOTICE. IN ADDITION, HELLERMANN TYTON RESERVES THE RIGHT TO MAKE CHANGES—WITHOUT NOTIFICATION TO CUSTOMERS—TO PROCESSING OR MATERIALS THAT DO NOT AFFECT COMPLIANCE WITH ANY APPLICABLE SPECIFICATION.

Cage Code K0720

## STRAIGHT MIL STYLE SHRINK BOOT



This style is low profile and lightweight. Typically used on airborne harnesses. The rib locates on circular backshell.

For VG shapes according to T07 add 'P' after Hellermann part number.

Dimensions apply to all materials unless otherwise indicated and are in inches.

VG Part No.	Hellermann Part No.	Expanded (Min)		Recovered (Max)		Recovered dimensions fully shrunk				
		H	J	H	J	P ±10%	R ±10%	T ±10%	HW ±20%	JW ±20%
VG 95343 T06 D001A	* 129-1	0.87	0.87	0.47	0.26	2.99	0.47	0.04	0.06	0.04
VG 95343 T06 D002A	* 130-1	0.89	0.89	0.59	0.30	3.27	0.47	0.04	0.06	0.04
VG 95343 T06 D003A	* 131-1	1.14	1.14	0.75	0.33	3.50	0.47	0.04	0.07	0.04
VG 95343 T06 D004A	* 132-1	1.34	1.34	0.91	0.39	4.02	0.47	0.04	0.07	0.04
VG 95343 T06 D005A	* 133-1	1.46	1.46	1.18	0.43	4.25	0.55	0.07	0.08	0.04
VG 95343 T06 D006A	* 134-1	1.71	1.71	1.34	0.47	4.49	0.59	0.07	0.08	0.04
VG 95343 T06 D007A	135-1	1.97	1.97	1.61	0.57	4.65	0.59	0.07	0.09	0.06
VG 95343 T06 D008A	136-1	2.46	2.46	1.85	0.71	4.76	0.63	0.08	0.10	0.06
VG 95343 T06 D009A	138-1	2.72	2.72	2.36	0.79	5.00	0.63	0.08	0.10	0.06
VG 95343 T06 D010A	187-1	3.21	3.21	2.64	0.91	5.24	0.63	0.08	0.10	0.06

MIL Spec. Part No.	Hellermann Part No.	H	J	H	J	P ±10%	R ±10%	T ±10%	HW ±20%	JW ±20%
MS3109-01	* 129-4	0.88	0.88	0.45	0.25	4.17	0.46	0.04	0.06	0.04
MS3109-02	* 130-4	1.01	1.01	0.59	0.29	4.77	0.48	0.04	0.06	0.04
MS3109-03	* 131-4	1.16	1.16	0.74	0.33	5.46	0.48	0.04	0.07	0.04
—	132-2	1.34	1.34	0.90	0.38	1.38	0.48	0.04	0.07	0.04
—	132-3	1.34	1.34	0.82	0.35	2.36	0.48	0.04	0.07	0.04
MS3109-04	* 132-4	1.34	1.34	0.90	0.38	6.28	0.48	0.04	0.07	0.04
—	133-2	1.47	1.47	1.06	0.37	1.85	0.55	0.06	0.08	0.04
—	133-3	1.47	1.47	1.06	0.37	2.36	0.55	0.06	0.08	0.04
MS3109-05	* 133-4	1.47	1.47	1.16	0.41	7.00	0.55	0.06	0.08	0.04
MS3109-06	* 134-4	1.72	1.72	1.34	0.48	8.00	0.60	0.06	0.08	0.04
—	135-2	1.97	1.97	1.48	0.51	1.73	0.60	0.06	0.09	0.06
MS3109-07	135-4	1.97	1.97	1.62	0.56	7.99	0.60	0.06	0.09	0.06
—	136-2	2.76	2.76	1.69	0.69	4.92	0.63	0.08	0.10	0.06
MS3109-08	136-4	2.47	2.47	1.85	0.69	8.00	0.63	0.08	0.10	0.06
MS3109-09	138-4	2.73	2.73	2.15	0.70	8.00	0.63	0.08	0.10	0.06
MS3109-10	187-4	3.22	3.22	2.41	0.82	8.00	0.63	0.08	0.10	0.06

# HellermannTyton

**DISCLAIMER**

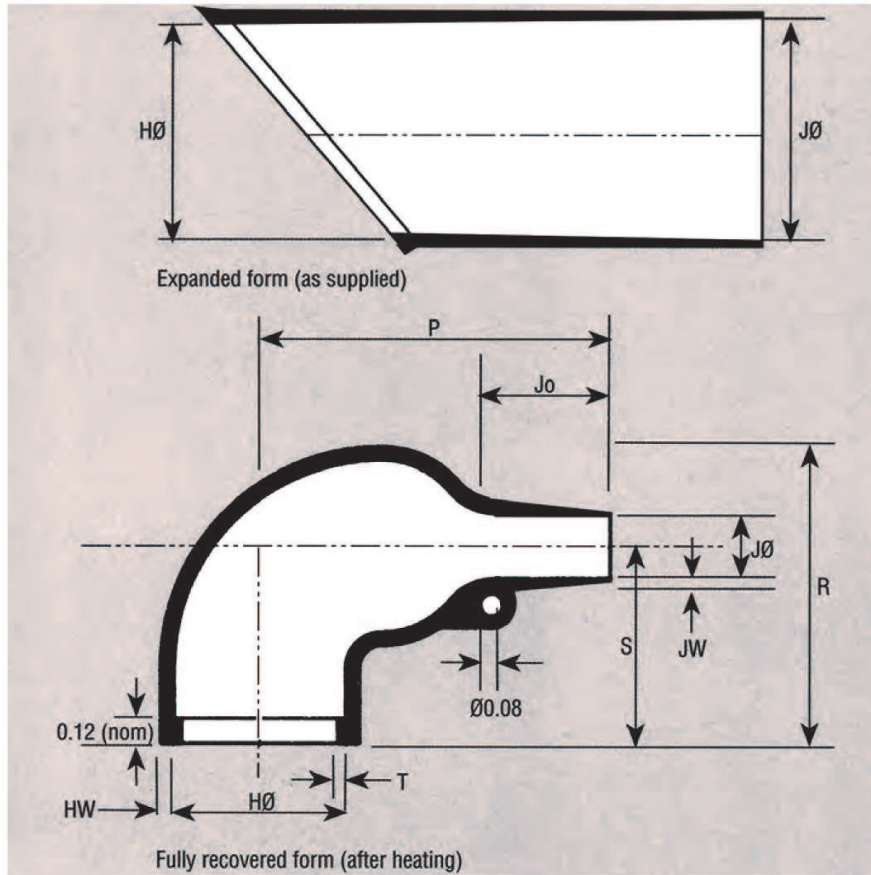
ALL INFORMATION IN THIS SPECIFICATION, INCLUDING ILLUSTRATIONS, IS BELIEVED TO BE RELIABLE. READERS, HOWEVER, SHOULD INDEPENDENTLY EVALUATE THE SUITABILITY OF EACH PRODUCT FOR THEIR APPLICATION. HELLERMANN TYTON MAKES NO WARRANTIES AS TO THE ACCURACY OR COMPLETENESS OF THE INFORMATION, AND DISCLAIMS ANY LIABILITY REGARDING ITS USE. SPECIFICATIONS ARE SUBJECT TO CHANGE WITHOUT NOTICE. IN ADDITION, HELLERMANN TYTON RESERVES THE RIGHT TO MAKE CHANGES—WITHOUT NOTIFICATION TO CUSTOMERS—TO PROCESSING OR MATERIALS THAT DO NOT AFFECT COMPLIANCE WITH ANY APPLICABLE SPECIFICATION.

Cage Code K0720

## 90° VG STYLE SHRINK BOOT

This style provides strain relief for harness systems when used in conjunction with a circular grooved adaptor.

For VG shapes according to T07 add 'P' after Hellermann part number.



Dimensions apply to all materials unless otherwise indicated and are in inches.

Dimensions in inches		Expanded (Min)		Recovered (Max)		Recovered dimensions fully shrunk						
VG Part No.	Hellermann Part No.	H	J	H	J	P ±10%	R ±10%	S ±10%	Jo ±10%	HW ±20%	JW ±20%	T ±10%
VG 95343 T06 E001A	* 1152-4	0.94	0.94	0.41	0.24	1.02	0.98	0.75	0.39	0.05	0.02	0.04
VG 95343 T06 E002A	* 1154-4	1.18	1.18	0.61	0.24	1.26	1.06	0.79	0.47	0.06	0.03	0.04
VG 95343 T06 E003A	* 1155-4	1.22	1.22	0.71	0.28	1.57	1.22	0.83	0.59	0.07	0.04	0.04
VG 95343 T06 E004A	* 1156-4	1.42	1.42	0.89	0.33	1.81	1.50	1.02	0.59	0.07	0.04	0.04
VG 95343 T06 E005A	* 1157-4	1.69	1.69	1.12	0.39	2.17	1.77	1.18	0.63	0.08	0.04	0.07
VG 95343 T06 E006A	* 1158-4	2.36	2.36	1.38	0.63	3.15	2.13	1.38	1.18	0.13	0.06	0.07
VG 95343 T06 E007A	* 1159-4	2.60	2.60	1.77	0.67	4.25	2.68	1.65	2.01	0.15	0.08	0.08
VG 95343 T06 E008A	1160-4	3.23	3.23	2.40	0.98	4.65	3.31	2.05	1.54	0.16	0.16	0.08

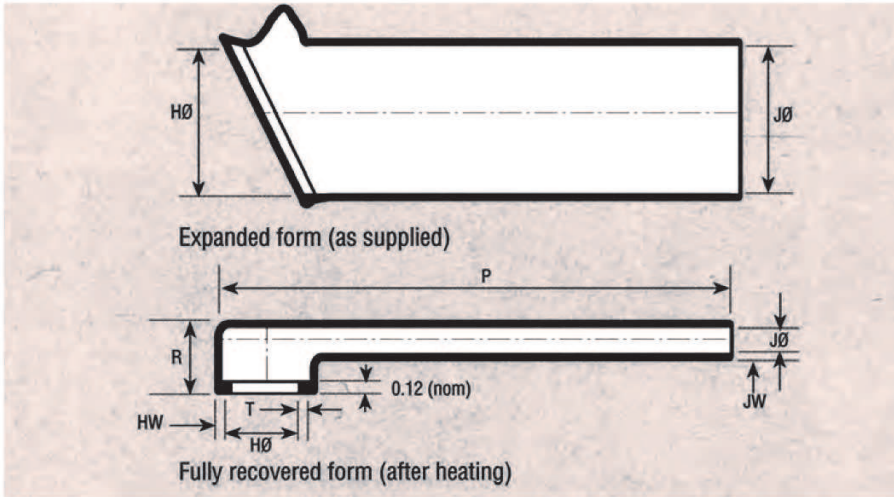
# HellermannTyton

#### DISCLAIMER

ALL INFORMATION IN THIS SPECIFICATION, INCLUDING ILLUSTRATIONS, IS BELIEVED TO BE RELIABLE. READERS, HOWEVER, SHOULD INDEPENDENTLY EVALUATE THE SUITABILITY OF EACH PRODUCT FOR THEIR APPLICATION. HELLERMANN TYTON MAKES NO WARRANTIES AS TO THE ACCURACY OR COMPLETENESS OF THE INFORMATION, AND DISCLAIMS ANY LIABILITY REGARDING ITS USE. SPECIFICATIONS ARE SUBJECT TO CHANGE WITHOUT NOTICE. IN ADDITION, HELLERMANN TYTON RESERVES THE RIGHT TO MAKE CHANGES—WITHOUT NOTIFICATION TO CUSTOMERS—TO PROCESSING OR MATERIALS THAT DO NOT AFFECT COMPLIANCE WITH ANY APPLICABLE SPECIFICATION.

Cage Code K0720

## 90° MIL STYLE SHRINK BOOT



This style is typically used on airborne harnesses to achieve low profile, compact strain relief and mechanical protection.

VG shapes according to T07 add 'P' after Hellermann Part Number.

Dimensions apply to all materials unless otherwise indicated and are in inches.

VG Part No.	Hellermann Part No.	Expanded (Min)		Recovered (Max)		Recovered dimensions fully shrunk				
		H	J	H	J	P ±10%	R ±10%	T ±10%	HW ±20%	JW ±30%
VG 95343 T06 F001	1121-1	0.87	0.87	0.47	0.26	2.76	0.75	0.04	0.06	0.04
VG 95343 T06 F002	* 1122-1	1.00	1.00	0.59	0.30	3.11	0.79	0.04	0.06	0.04
VG 95343 T06 F003	* 1123-1	1.14	1.14	0.75	0.33	3.50	0.83	0.04	0.07	0.04
VG 95343 T06 F004	* 1124-1	1.34	1.34	0.91	0.39	4.02	0.87	0.04	0.07	0.04
VG 95343 T06 F005	* 1125-1	1.46	1.46	1.18	0.43	4.25	0.94	0.07	0.08	0.04
VG 95343 T06 F006	* 1126-1	1.71	1.71	1.34	0.47	4.76	1.06	0.07	0.08	0.04
VG 95343 T06 F007	1127-1	1.97	1.97	1.63	0.57	5.20	1.18	0.07	0.09	0.06
VG 95343 T06 F008	1128-1	2.46	2.46	1.85	0.71	5.24	1.30	0.08	0.10	0.06
VG 95343 T06 F009	1129-1	2.72	2.72	2.36	0.79	5.39	1.40	0.08	0.10	0.06
VG 95343 T06 F010	1141-1	3.23	3.23	2.64	0.91	5.51	1.77	0.08	0.10	0.06
MIL Spec. No.										
MS 3117-01-	1121-4	0.88	0.88	0.41	0.23	4.14	0.73	0.04	0.06	0.04
MS 3117-02-	* 1122-4	1.01	1.01	0.54	0.26	4.88	0.78	0.04	0.06	0.04
MS 3117-03-	* 1123-4	1.16	1.16	0.68	0.30	5.76	0.82	0.04	0.07	0.04
MS 3117-04-	* 1124-4	1.34	1.34	0.82	0.35	6.78	0.86	0.04	0.07	0.04
MS 3117-05-	* 1125-4	1.47	1.47	1.06	0.37	7.29	0.96	0.07	0.08	0.04
	1125-2	1.62	1.62	1.06	0.37	3.23	0.96	0.07	0.08	0.04
MS 3117-06	* 1126-4	1.72	1.72	1.22	0.44	8.41	1.08	0.07	0.08	0.04
MS 3117-07	1127-4	1.97	1.97	1.48	0.51	8.84	1.16	0.07	0.09	0.06
	1127-3	1.97	1.97	1.48	0.51	2.56	1.16	0.07	0.09	0.06
MS 3117-08-	1128-4	2.47	2.47	1.69	0.69	8.95	1.30	0.08	0.10	0.06
MS 3117-09-	1129-4	2.73	2.73	2.15	0.70	9.19	1.38	0.08	0.10	0.06

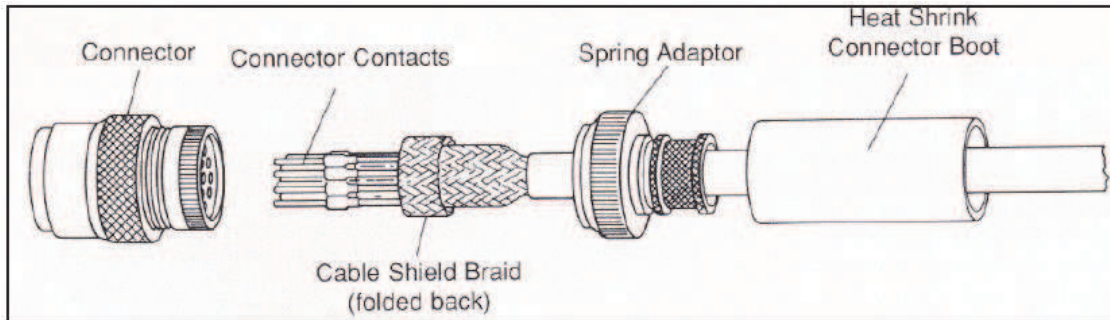
# HellermannTyton

**DISCLAIMER**

ALL INFORMATION IN THIS SPECIFICATION, INCLUDING ILLUSTRATIONS, IS BELIEVED TO BE RELIABLE. READERS, HOWEVER, SHOULD INDEPENDENTLY EVALUATE THE SUITABILITY OF EACH PRODUCT FOR THEIR APPLICATION. HELLERMANN TYTON MAKES NO WARRANTIES AS TO THE ACCURACY OR COMPLETENESS OF THE INFORMATION, AND DISCLAIMS ANY LIABILITY REGARDING ITS USE. SPECIFICATIONS ARE SUBJECT TO CHANGE WITHOUT NOTICE. IN ADDITION, HELLERMANN TYTON RESERVES THE RIGHT TO MAKE CHANGES—WITHOUT NOTIFICATION TO CUSTOMERS—TO PROCESSING OR MATERIALS THAT DO NOT AFFECT COMPLIANCE WITH ANY APPLICABLE SPECIFICATION.

Cage Code K0720

## EMI/RFI CABLE PREPARATION FOR INSTALLATION OF AN ADAPTER



1. Prepare the cable making sure that a sufficient length of shield is available, so that it fits against the front shoulder of the lip groove.
2. Before insertion of connector contacts, slide the heat-shrinkable connector boot onto the cable followed by the Adaptor.
3. Position the heat shrinkable boot, Adaptor, and shield braid out of the way and insert the connector contacts. Depending upon the shielding braid size it can either be folded back onto itself or bunched up concertina style out of the way for easy access to the cable conductors.
4. Screw the Adaptor onto the connector and tighten to the torque value specified by the connector manufacturer. It is recommended that the connector threads are lubricated with a suitable compound if a liquid thread lock is not used. The adaptor should be hand tightened to ensure proper thread alignment and then tightened with a strap wrench and torque meter to the specified torque.
5. Bring the cable shield braid up onto the adaptor body so that it fits against the front shoulder of the lip groove Alternatively extend the braid past the lip groove.
6. Open up the constant force spring and wrap it around the cable braid section that is positioned over the constant force spring slot area of the adaptor. This is most easily accomplished by lifting up the end of the spring and trapping the braid covered adaptor between the spring coil and raised end. The spring will now stay in place and can be installed by simply rolling the spring coil around the braid covered adaptor. Refer to appropriate code of practice for procedure to install heat shrink shape.

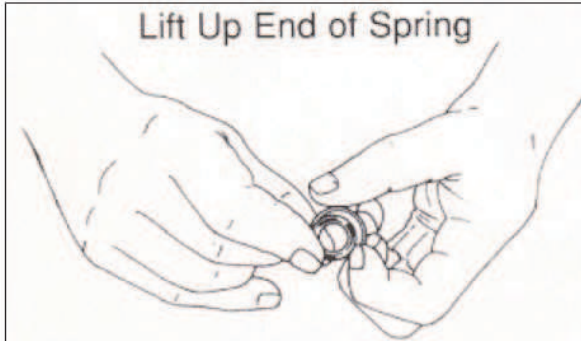
**HellermannTyton**

**DISCLAIMER**

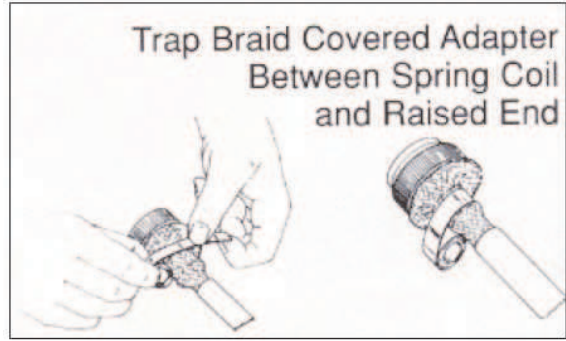
ALL INFORMATION IN THIS SPECIFICATION, INCLUDING ILLUSTRATIONS, IS BELIEVED TO BE RELIABLE. READERS, HOWEVER, SHOULD INDEPENDENTLY EVALUATE THE SUITABILITY OF EACH PRODUCT FOR THEIR APPLICATION. HELLERMANN TYTON MAKES NO WARRANTIES AS TO THE ACCURACY OR COMPLETENESS OF THE INFORMATION, AND DISCLAIMS ANY LIABILITY REGARDING ITS USE. SPECIFICATIONS ARE SUBJECT TO CHANGE WITHOUT NOTICE. IN ADDITION, HELLERMANN TYTON RESERVES THE RIGHT TO MAKE CHANGES—WITHOUT NOTIFICATION TO CUSTOMERS—TO PROCESSING OR MATERIALS THAT DO NOT AFFECT COMPLIANCE WITH ANY APPLICABLE SPECIFICATION.

Cage Code K0720

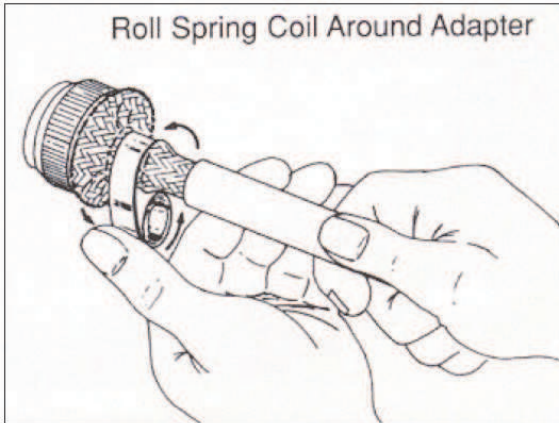
# ZETALOK™ INSTALLATION INSTRUCTIONS



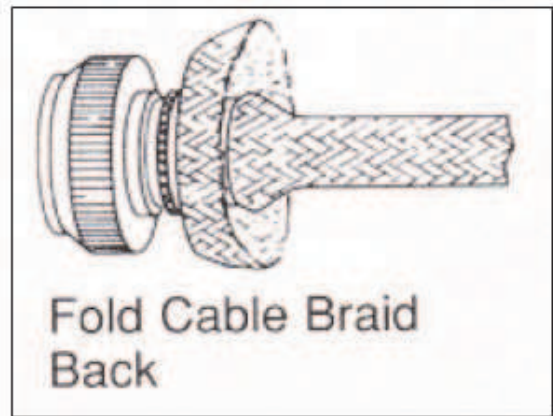
Step 1



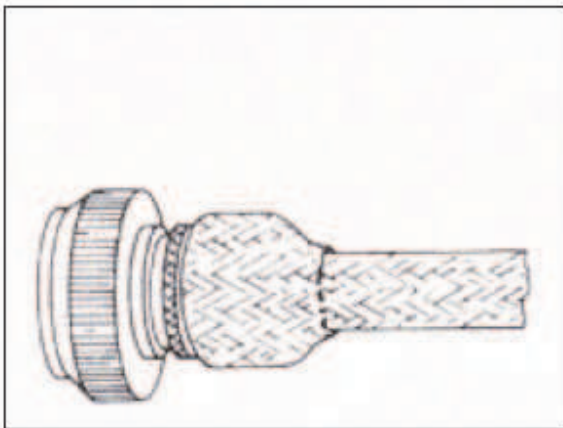
Step 2



Step 3



Step 4



Step 5



Step 6

**HellermannTyton**

**DISCLAIMER**

ALL INFORMATION IN THIS SPECIFICATION, INCLUDING ILLUSTRATIONS, IS BELIEVED TO BE RELIABLE. READERS, HOWEVER, SHOULD INDEPENDENTLY EVALUATE THE SUITABILITY OF EACH PRODUCT FOR THEIR APPLICATION. HELLERMANN TYTON MAKES NO WARRANTIES AS TO THE ACCURACY OR COMPLETENESS OF THE INFORMATION, AND DISCLAIMS ANY LIABILITY REGARDING ITS USE. SPECIFICATIONS ARE SUBJECT TO CHANGE WITHOUT NOTICE. IN ADDITION, HELLERMANN TYTON RESERVES THE RIGHT TO MAKE CHANGES—WITHOUT NOTIFICATION TO CUSTOMERS—TO PROCESSING OR MATERIALS THAT DO NOT AFFECT COMPLIANCE WITH ANY APPLICABLE SPECIFICATION.

Cage Code K0720

# INTRODUCTION TO ZETALOK™

Zetalok™ is a unique re-enterable termination system for connecting a cable shielding braid to a circular connector. When used in conjunction with our heatshrink moulded shape, a sealed environmental termination system is achieved.

Zetalok™ incorporates a specially developed backshell designed to accommodate the braid using a constant force spring. The main feature is that the termination can be re-entered when required. It is thereby possible to effect repairs to connector pins and sockets without the need to discard any part of the shielding system.

This method gives comparable performance to the other braid trap arrangements, in terms of tensile strength and DC resistance. Furthermore, due to the self-tensioning nature of the spring, it is exceedingly resistant to vibration and shock.

## FEATURES

- Purpose developed backshell incorporating a self tensioning spring
- Tensile force to pull off braid exceeds 150 lbs. When used in combination with a heat shrink boot, tensile force required to remove is in excess of 250 lbs
- Operator friendly and easy to install
- Constant force spring produces a DC contact resistance at 20° Celsius of less than 1 milliohm due to 360° contact with the backshell
- Constant force spring electrical and mechanical characteristics are unaffected by vibration, shock and temperatures between -65° and 150° Celsius
- Comprehensive Independent witnessed test report available on request, covering Thermal Cycling to MIL-STD-202E Method 107G. Vibration Testing to MIL-STD-176-1. Shock Testing to MIL-STD-1344A Condition G.
- Constant force spring can be used in corrosive environments
- Constant force spring can be used with single or double braids when used in combination with backshells designed for use with the Zetalok™ spring

## BENEFITS

- Spring can be re-opened with no special tools and subsequently re-used
- Possible to effect repairs to connector pins and sockets without the need to scrap any part of the shielding system
- Product achieves a 360° screen termination
- Four sizes of springs cover a range of entry sizes
- Spring has a pre-set compressive force and needs no external calibration
- Constant force spring can be used in conjunction with backshells and braid tails, without the use of swaging equipment, in the factory or in the field

# HellermannTyton

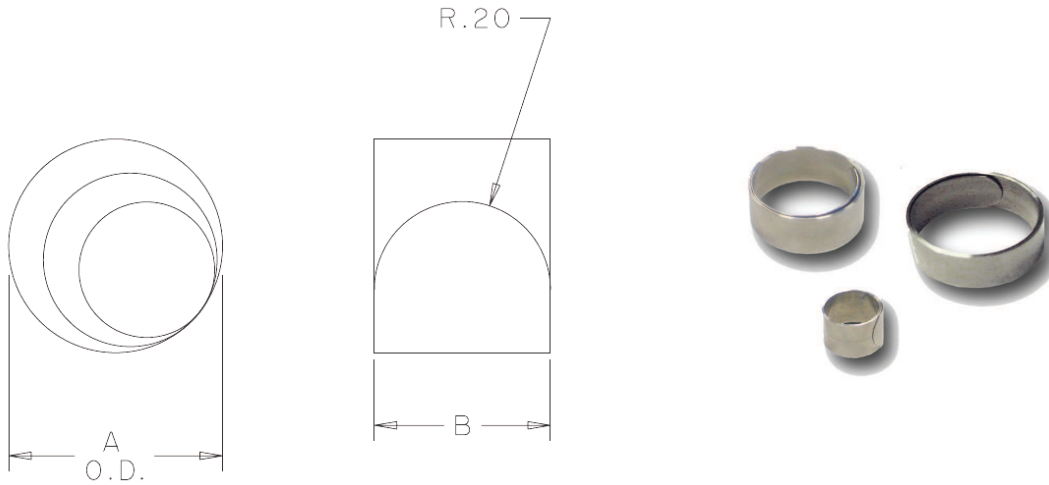
#### DISCLAIMER

ALL INFORMATION IN THIS SPECIFICATION, INCLUDING ILLUSTRATIONS, IS BELIEVED TO BE RELIABLE. READERS, HOWEVER, SHOULD INDEPENDENTLY EVALUATE THE SUITABILITY OF EACH PRODUCT FOR THEIR APPLICATION. HELLERMANN TYTON MAKES NO WARRANTIES AS TO THE ACCURACY OR COMPLETENESS OF THE INFORMATION, AND DISCLAIMS ANY LIABILITY REGARDING ITS USE. SPECIFICATIONS ARE SUBJECT TO CHANGE WITHOUT NOTICE. IN ADDITION, HELLERMANN TYTON RESERVES THE RIGHT TO MAKE CHANGES—WITHOUT NOTIFICATION TO CUSTOMERS—TO PROCESSING OR MATERIALS THAT DO NOT AFFECT COMPLIANCE WITH ANY APPLICABLE SPECIFICATION.

Cage Code K0720

# ZETALOK™

## HE050 - HE400-4 (12347630) CONSTANT FORCE SPRINGS



**TABLE 1 - STAINLESS STEEL SPRING BAND**

HELLERMANN	A MAX	B +/- 0.2	TURNS +/- 0.25
HE050	.295 (7.5)	.374 (9.5)	
HE100-1	.315 (8.0)	.374 (9.5)	4.5
HE200-2	.504 (12.8)	.374 (9.5)	3
HE300-3	.705 (17.9)	.374 (9.5)	4.25
HE400-4	.858 (21.8)	.374 (9.5)	3.5

**Additional sizes are available upon request. Please contact HellermannTyton.**

Zetalok™ is a unique re-enterable termination system for connecting a cable shielding braid to a circular connector. When used in conjunction with our Heatshrink moulded shape, a sealed environmental termination system is achieved. The main feature is that the termination can be re-entered when required. It is there by possible to effect repairs to connector pins/sockets without the need to discard any part of the shielding system. Due to the self-tensioning nature of the spring, it provides excellent resistance to vibration and shock.

HellermannTyton Zetalok™ Springs are tested to MIL-STD-202G and MIL-STD-167-1 (Ships).

# HellermannTyton

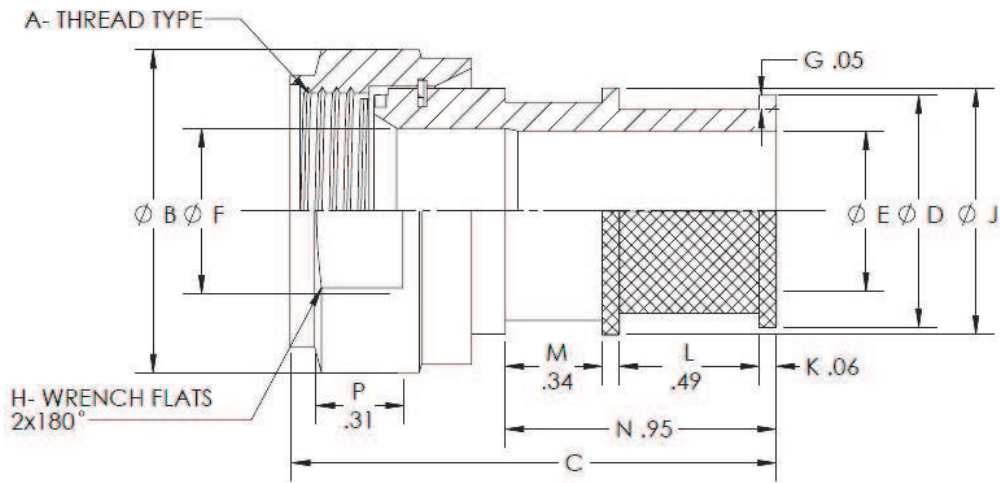
**DISCLAIMER**

ALL INFORMATION IN THIS SPECIFICATION, INCLUDING ILLUSTRATIONS, IS BELIEVED TO BE RELIABLE. READERS, HOWEVER, SHOULD INDEPENDENTLY EVALUATE THE SUITABILITY OF EACH PRODUCT FOR THEIR APPLICATION. HELLERMANNTYTON MAKES NO WARRANTIES AS TO THE ACCURACY OR COMPLETENESS OF THE INFORMATION, AND DISCLAIMS ANY LIABILITY REGARDING ITS USE. SPECIFICATIONS ARE SUBJECT TO CHANGE WITHOUT NOTICE. IN ADDITION, HELLERMANNTYTON RESERVES THE RIGHT TO MAKE CHANGES—WITHOUT NOTIFICATION TO CUSTOMERS—TO PROCESSING OR MATERIALS THAT DO NOT AFFECT COMPLIANCE WITH ANY APPLICABLE SPECIFICATION.

**Cage Code K0720**

# HT7002 - STRAIGHT ADAPTER, WRENCH FLATS (12347631)

MIL-DTL-5015 CRIMP; MIL-DTL-26482 SERIES II;  
MIL-DTL-83723 SERIES III



HT7 0 02 - 10 - 6 - 8

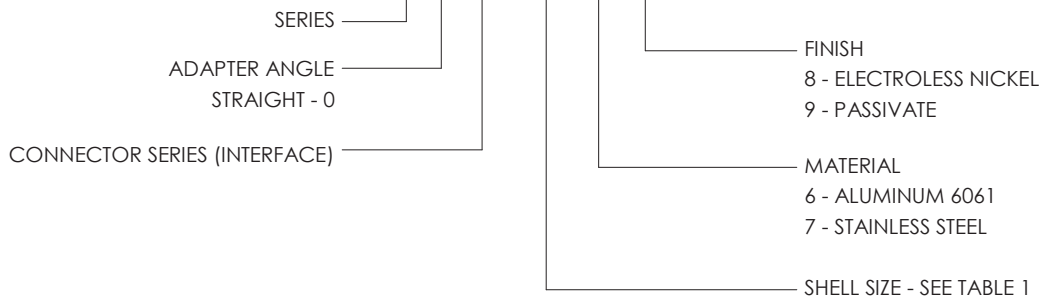


TABLE 1 - All Dimensions in Inches

Shell Size	A Thread Type	B Max	C Ref	D Dia Max	E Dia Max	F Dia Max	H +.003 -.015	J Dia Max
08	.500-20 UNF	0.78	1.70	0.530	0.280	0.280	0.620	0.560
10	.625-24 UNEF	0.91	1.70	0.610	0.370	0.370	0.750	0.640
12	.750-20 UNEF	1.03	1.70	0.780	0.520	0.520	0.870	0.820
14	.875-20 UNEF	1.16	1.70	0.840	0.580	0.580	1.00	0.890
16	1.000-20 UNEF	1.28	1.70	0.960	0.710	0.710	1.12	1.02
18	1.0625-18 UNEF	1.34	1.70	1.04	0.790	0.790	1.19	1.08
20	1.1875-18 UNEF	1.47	1.70	1.22	0.910	0.910	1.31	1.27
22	1.3125-18 UNEF	1.59	1.70	1.35	1.04	1.04	1.44	1.39
24	1.4375-18 UNEF	1.72	1.70	1.48	1.17	1.17	1.56	1.52



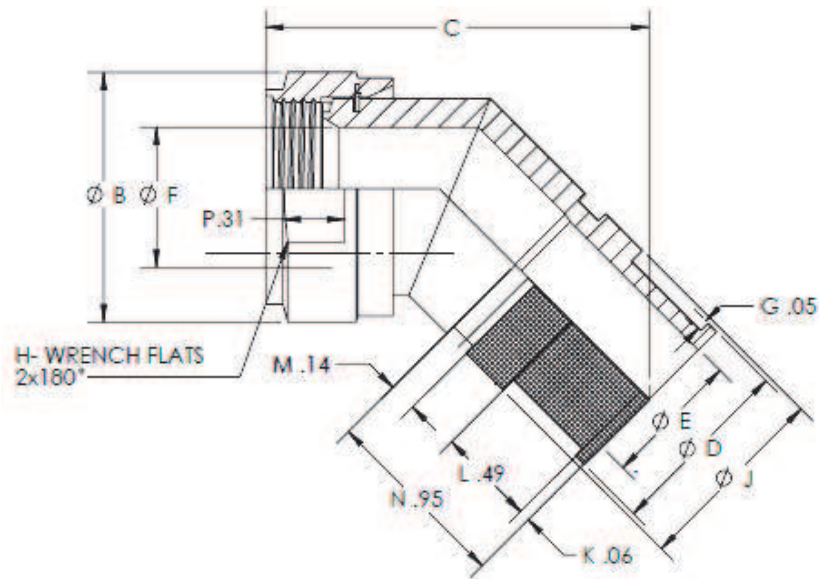
**DISCLAIMER**

ALL INFORMATION IN THIS SPECIFICATION, INCLUDING ILLUSTRATIONS, IS BELIEVED TO BE RELIABLE. READERS, HOWEVER, SHOULD INDEPENDENTLY EVALUATE THE SUITABILITY OF EACH PRODUCT FOR THEIR APPLICATION. HELLERMANN TYTON MAKES NO WARRANTIES AS TO THE ACCURACY OR COMPLETENESS OF THE INFORMATION, AND DISCLAIMS ANY LIABILITY REGARDING ITS USE. SPECIFICATIONS ARE SUBJECT TO CHANGE WITHOUT NOTICE. IN ADDITION, HELLERMANN TYTON RESERVES THE RIGHT TO MAKE CHANGES—WITHOUT NOTIFICATION TO CUSTOMERS—TO PROCESSING OR MATERIALS THAT DO NOT AFFECT COMPLIANCE WITH ANY APPLICABLE SPECIFICATION.

Cage Code K0720

# HT7402 - 45 DEGREE ADAPTER, WRENCH FLATS (12387121)

MIL-DTL-5015 CRIMP; MIL-DTL-26482 SERIES II;  
MIL-DTL-83723 SERIES III



HT7 4 02 - 10 - 6 - 8

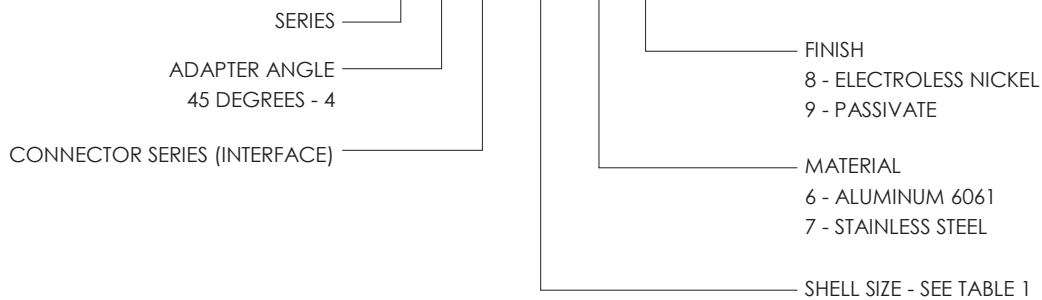


TABLE 1 - All Dimensions in Inches

Shell Size	A Thread Type	B Max	C Ref	D Dia Max	E Dia Max	F Dia Max	H +.003 -.015	J Dia Max
08	.500-20 UNF	0.78	1.46	0.530	0.280	0.280	0.620	0.560
10	.625-24 UNEF	0.91	1.48	0.610	0.370	0.370	0.750	0.640
12	.750-20 UNEF	1.03	1.52	0.780	0.520	0.520	0.870	0.820
14	.875-20 UNEF	1.16	1.56	0.840	0.580	0.580	1.00	0.890
16	1.000-20 UNEF	1.28	1.60	0.960	0.710	0.710	1.12	1.02
18	1.0625-18 UNEF	1.34	1.66	1.04	.790	0.790	1.19	1.08
20	1.1875-18 UNEF	1.47	1.70	1.22	.910	0.910	1.31	1.27
22	1.3125-18 UNEF	1.59	1.73	1.35	1.04	1.04	1.44	1.39
24	1.4375-18 UNEF	1.72	1.79	1.48	1.17	1.17	1.56	1.52

**HellermannTyton**

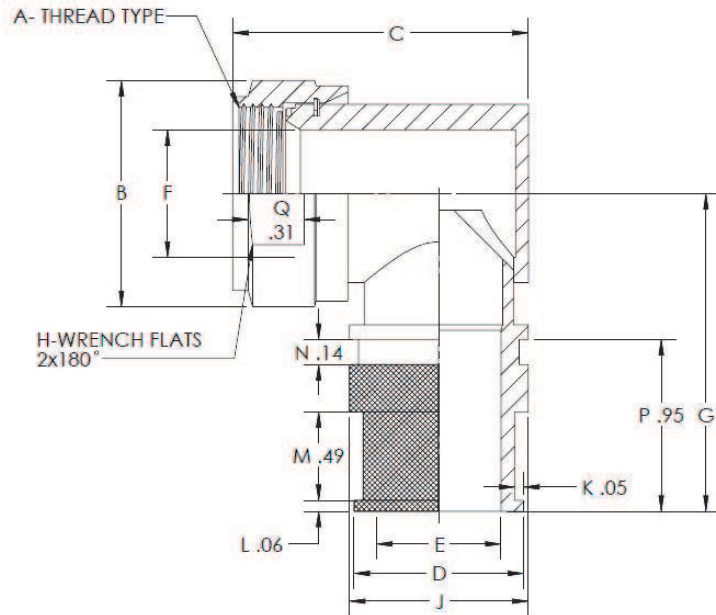
**DISCLAIMER**

ALL INFORMATION IN THIS SPECIFICATION, INCLUDING ILLUSTRATIONS, IS BELIEVED TO BE RELIABLE. READERS, HOWEVER, SHOULD INDEPENDENTLY EVALUATE THE SUITABILITY OF EACH PRODUCT FOR THEIR APPLICATION. HELLERMANN TYTON MAKES NO WARRANTIES AS TO THE ACCURACY OR COMPLETENESS OF THE INFORMATION, AND DISCLAIMS ANY LIABILITY REGARDING ITS USE. SPECIFICATIONS ARE SUBJECT TO CHANGE WITHOUT NOTICE. IN ADDITION, HELLERMANN TYTON RESERVES THE RIGHT TO MAKE CHANGES—WITHOUT NOTIFICATION TO CUSTOMERS—TO PROCESSING OR MATERIALS THAT DO NOT AFFECT COMPLIANCE WITH ANY APPLICABLE SPECIFICATION.

Cage Code K0720

# HT7902 - 90 DEGREE ADAPTER, WRENCH FLATS (12387120)

MIL-DTL-5015 CRIMP; MIL-DTL-26482 SERIES II;  
MIL-DTL-83723 SERIES III



HT7 9 02 - 10 - 6 - 8

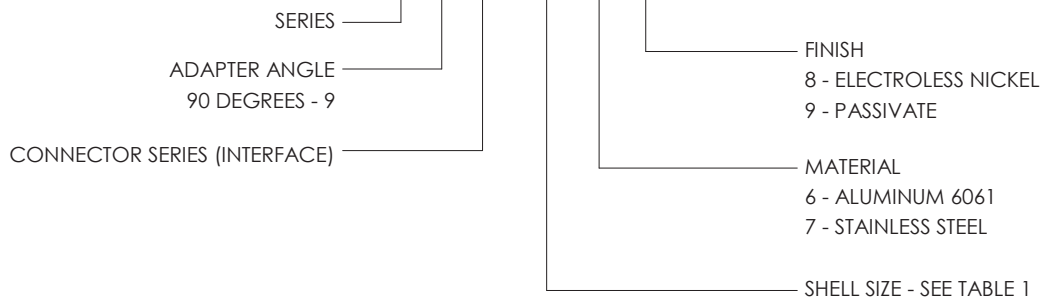


TABLE 1 - All Dimensions in Inches

Shell Size	A Thread Type	B Max	C Ref	D Dia Max	E Dia Max	F Dia Max	H +.003 - .015	J Dia Max	G Ref
08	.500-20 UNF	0.780	0.960	0.530	0.280	0.280	0.620	0.560	1.480
10	.625-24 UNEF	0.910	1.040	0.610	0.370	0.370	0.750	0.640	1.560
12	.750-20 UNEF	1.030	1.140	0.780	0.520	0.520	0.870	0.820	1.620
14	.875-20 UNEF	1.160	1.200	0.840	0.580	0.580	1.000	0.890	1.680
16	1.000-20 UNEF	1.280	1.340	0.960	0.710	0.710	1.120	1.020	1.740
18	1.0625-18 UNEF	1.340	1.460	1.040	0.790	0.790	1.190	1.080	1.760
20	1.1875-18 UNEF	1.470	1.650	1.220	0.910	0.910	1.310	1.270	1.830
22	1.3125-18 UNEF	1.590	1.730	1.350	1.040	1.040	1.440	1.390	1.890
24	1.4375-18 UNEF	1.720	1.770	1.480	1.170	1.170	1.560	1.520	1.910



**DISCLAIMER**

ALL INFORMATION IN THIS SPECIFICATION, INCLUDING ILLUSTRATIONS, IS BELIEVED TO BE RELIABLE. READERS, HOWEVER, SHOULD INDEPENDENTLY EVALUATE THE SUITABILITY OF EACH PRODUCT FOR THEIR APPLICATION. HELLERMANN TYTON MAKES NO WARRANTIES AS TO THE ACCURACY OR COMPLETENESS OF THE INFORMATION, AND DISCLAIMS ANY LIABILITY REGARDING ITS USE. SPECIFICATIONS ARE SUBJECT TO CHANGE WITHOUT NOTICE. IN ADDITION, HELLERMANN TYTON RESERVES THE RIGHT TO MAKE CHANGES—WITHOUT NOTIFICATION TO CUSTOMERS—TO PROCESSING OR MATERIALS THAT DO NOT AFFECT COMPLIANCE WITH ANY APPLICABLE SPECIFICATION.

Cage Code K0720

# HT7009 - STRAIGHT ADAPTER, WRENCH FLATS

MIL-DTL-38999 SERIES I; MIL-DTL-38999 SERIES II

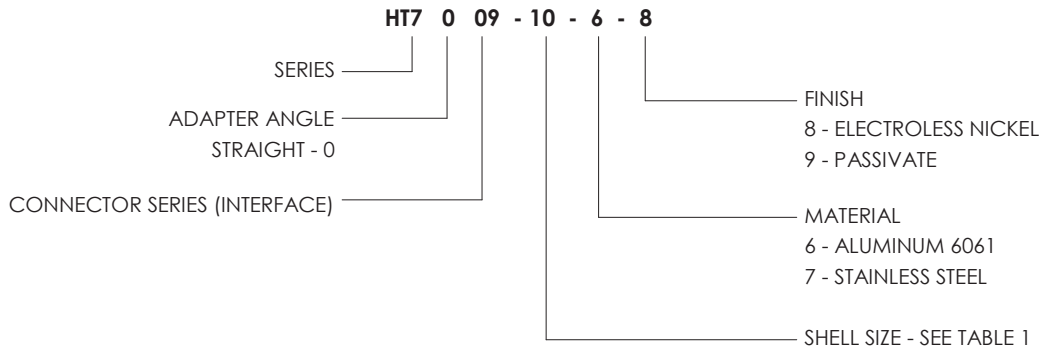
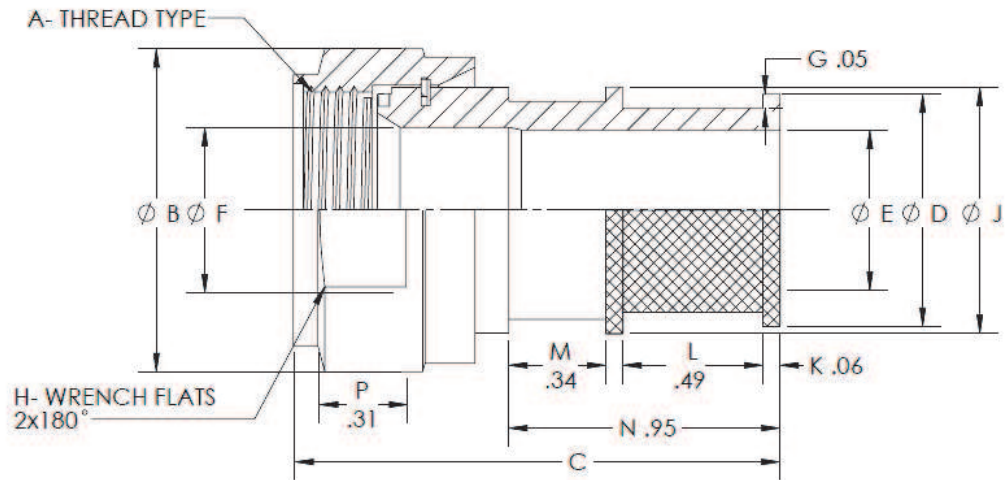


TABLE 1 - All Dimensions in Inches

Shell Size	A Thread Type	B Max	C Ref	D Dia Max	E Dia Max	F Dia Max	H +.003 -.015	J Dia Max
09	.4375-28 UNEF	0.781	1.700	0.530	0.280	0.269	0.625	0.560
11	.5625-24 UNEF	0.906	1.700	0.610	0.370	0.520	0.750	0.640
13	.6875-24 UNEF	1.034	1.700	0.780	0.520	0.645	0.875	0.820
15	.8125-20 UNEF	1.156	1.700	0.840	0.580	0.730	1.000	0.890
17	.9375-20 UNEF	1.281	1.700	0.960	0.710	0.855	1.125	1.020
19	1.0625-18 UNEF	1.406	1.700	1.04	0.790	0.934	1.250	1.080
21	1.1875-18 UNEF	1.531	1.700	1.22	0.910	1.059	1.375	1.270
23	1.3125-18 UNEF	1.656	1.700	1.35	1.040	1.184	1.500	1.390
25	1.4375-18 UNEF	1.781	1.700	1.48	1.170	1.309	1.625	1.520

# HellermannTyton

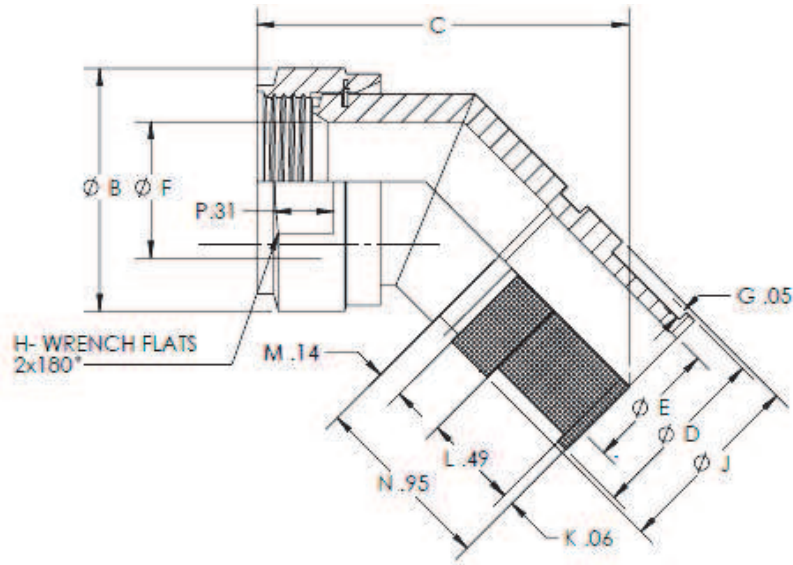
**DISCLAIMER**

ALL INFORMATION IN THIS SPECIFICATION, INCLUDING ILLUSTRATIONS, IS BELIEVED TO BE RELIABLE. READERS, HOWEVER, SHOULD INDEPENDENTLY EVALUATE THE SUITABILITY OF EACH PRODUCT FOR THEIR APPLICATION. HELLERMANN TYTON MAKES NO WARRANTIES AS TO THE ACCURACY OR COMPLETENESS OF THE INFORMATION, AND DISCLAIMS ANY LIABILITY REGARDING ITS USE. SPECIFICATIONS ARE SUBJECT TO CHANGE WITHOUT NOTICE. IN ADDITION, HELLERMANN TYTON RESERVES THE RIGHT TO MAKE CHANGES—WITHOUT NOTIFICATION TO CUSTOMERS—TO PROCESSING OR MATERIALS THAT DO NOT AFFECT COMPLIANCE WITH ANY APPLICABLE SPECIFICATION.

Cage Code K0720

# HT7409 - 45 DEGREE ADAPTER, WRENCH FLATS

MIL-DTL-38999 SERIES I; MIL-DTL-38999 SERIES II



HT7 4 09 - 10 - 6 - 8

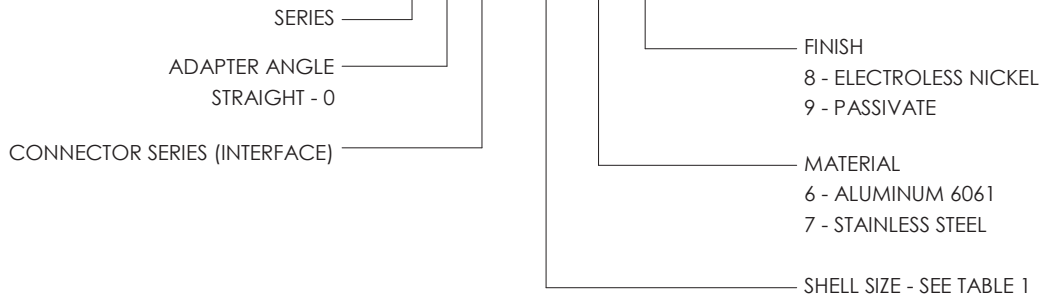


TABLE 1 - All Dimensions in Inches

Shell Size	A Thread Type	B Max	C Ref	D Dia Max	E Dia Max	F Dia Max	H +.003 -.015	J Dia Max
09	.4375-28 UNEF	0.781	1.460	0.530	0.280	0.269	0.625	0.560
11	.5625-24 UNEF	0.906	1.480	0.610	0.370	0.520	0.750	0.640
13	.6875-24 UNEF	1.034	1.520	0.780	0.520	0.645	0.875	0.820
15	.8125-20 UNEF	1.156	1.560	0.840	0.580	0.730	1.000	0.890
17	.9375-20 UNEF	1.281	1.600	0.960	.7100	0.855	1.125	1.020
19	1.0625-18 UNEF	1.406	1.660	1.040	.7900	0.934	1.250	1.080
21	1.1875-18 UNEF	1.531	1.700	1.220	.9100	1.059	1.375	1.270
23	1.3125-18 UNEF	1.656	1.730	1.350	1.040	1.184	1.500	1.390
25	1.4375-18 UNEF	1.781	1.790	1.480	1.170	1.309	1.625	1.520



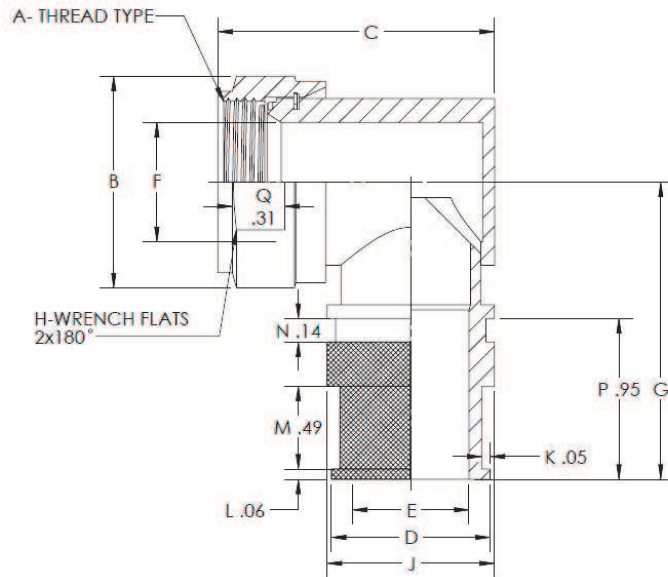
**DISCLAIMER**

ALL INFORMATION IN THIS SPECIFICATION, INCLUDING ILLUSTRATIONS, IS BELIEVED TO BE RELIABLE. READERS, HOWEVER, SHOULD INDEPENDENTLY EVALUATE THE SUITABILITY OF EACH PRODUCT FOR THEIR APPLICATION. HELLERMANN TYTON MAKES NO WARRANTIES AS TO THE ACCURACY OR COMPLETENESS OF THE INFORMATION, AND DISCLAIMS ANY LIABILITY REGARDING ITS USE. SPECIFICATIONS ARE SUBJECT TO CHANGE WITHOUT NOTICE. IN ADDITION, HELLERMANN TYTON RESERVES THE RIGHT TO MAKE CHANGES—WITHOUT NOTIFICATION TO CUSTOMERS—TO PROCESSING OR MATERIALS THAT DO NOT AFFECT COMPLIANCE WITH ANY APPLICABLE SPECIFICATION.

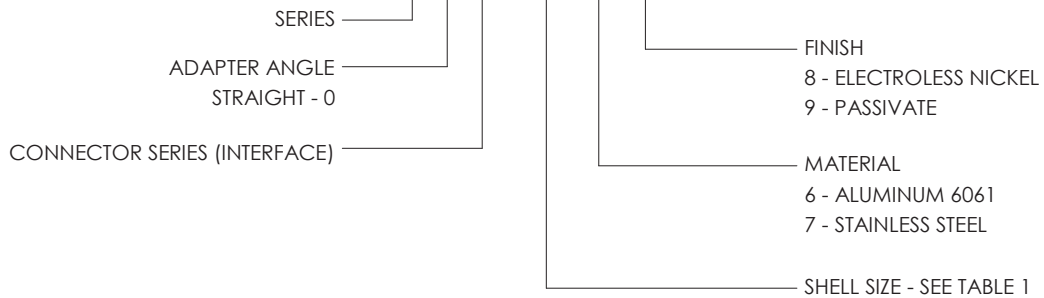
Cage Code K0720

# HT7909 - STRAIGHT ADAPTER, WRENCH FLATS (12387178)

MIL-DTL-38999 SERIES I; MIL-DTL-38999 SERIES II



**HT7 9 09 - 10 - 6 - 8**



**TABLE 1 - All Dimensions in Inches**

Shell Size	A Thread Type	B Max	C Ref	D Dia Max	E Dia Max	F Dia Max	H $\pm .003$ $-.015$	J Dia Max	G Ref
09	.4375-28 UNEF	0.781	0.960	0.530	0.280	0.269	0.625	0.560	1.480
11	.5625-24 UNEF	0.906	1.040	0.610	0.370	0.520	0.750	0.640	1.560
13	.6875-24 UNEF	1.034	1.140	0.780	0.520	0.645	0.875	0.820	1.620
15	.8125-20 UNEF	1.156	1.200	0.840	0.580	0.730	1.000	0.890	1.680
17	.9375-20 UNEF	1.281	1.340	0.960	0.710	0.855	1.125	1.020	1.740
19	1.0625-18 UNEF	1.406	1.460	1.040	0.790	0.934	1.250	1.080	1.760
21	1.1875-18 UNEF	1.531	1.650	1.220	0.910	1.059	1.375	1.270	1.830
23	1.3125-18 UNEF	1.656	1.730	1.350	1.040	1.184	1.500	1.390	1.890
25	1.4375-18 UNEF	1.781	1.770	1.480	1.170	1.309	1.625	1.520	1.910

**HellermannTyton**

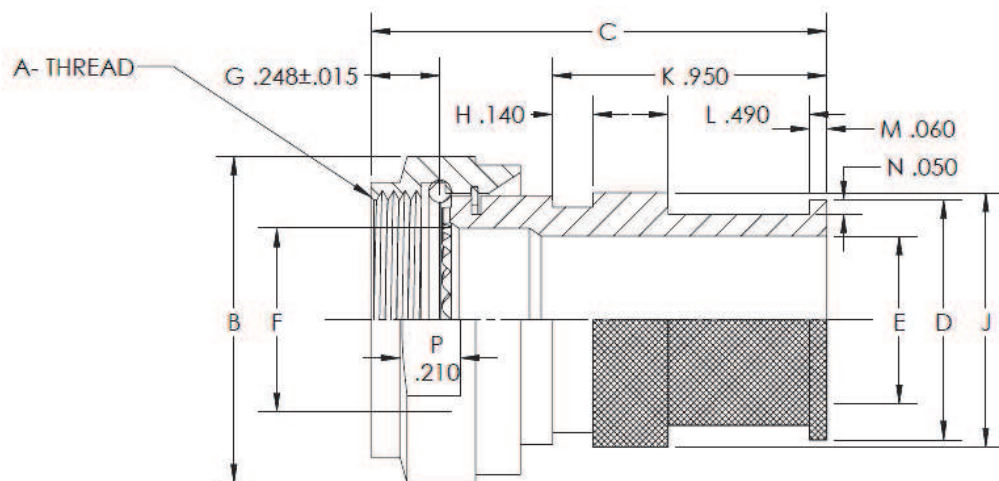
**DISCLAIMER**

ALL INFORMATION IN THIS SPECIFICATION, INCLUDING ILLUSTRATIONS, IS BELIEVED TO BE RELIABLE. READERS, HOWEVER, SHOULD INDEPENDENTLY EVALUATE THE SUITABILITY OF EACH PRODUCT FOR THEIR APPLICATION. HELLERMANN TYTON MAKES NO WARRANTIES AS TO THE ACCURACY OR COMPLETENESS OF THE INFORMATION, AND DISCLAIMS ANY LIABILITY REGARDING ITS USE. SPECIFICATIONS ARE SUBJECT TO CHANGE WITHOUT NOTICE. IN ADDITION, HELLERMANN TYTON RESERVES THE RIGHT TO MAKE CHANGES—WITHOUT NOTIFICATION TO CUSTOMERS—TO PROCESSING OR MATERIALS THAT DO NOT AFFECT COMPLIANCE WITH ANY APPLICABLE SPECIFICATION.

**Cage Code K0720**

# HT7006 - STRAIGHT ADAPTER, WRENCH FLATS (12387118)

MIL-DTL-38999 SERIES III; MIL-DTL-38999 SERIES IV



HT7 0 06 - 11 - 6 - 8

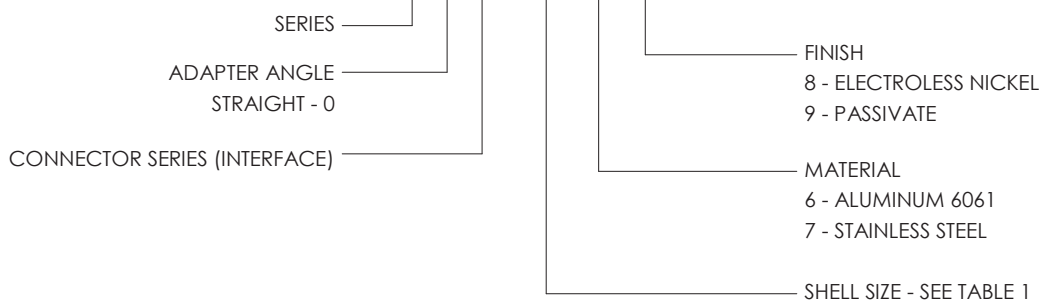


TABLE 1 - All Dimensions in Inches

Shell Size	A Thread Type	B Max	C Ref	D Dia Max	E Dia Max	F Dia Max	H +.003 -.015	J Dia Max
09	M12 X 1.0	0.780	1.580	0.530	0.270	0.270	0.625	0.560
11	M15 X 1.0	0.910	1.580	0.610	0.410	0.410	0.750	0.640
13	M18 X 1.0	1.030	1.580	0.780	0.520	0.520	0.875	0.820
15	M22 X 1.0	1.160	1.580	0.840	0.650	0.650	1.000	0.890
17	M25 X 1.0	1.280	1.580	0.960	0.780	0.780	1.125	1.020
19	M28 X 1.0	1.410	1.580	1.040	0.880	0.880	1.250	1.080
21	M31 X 1.0	1.530	1.580	1.220	1.010	1.010	1.375	1.270
23	M34 X 1.0	1.660	1.580	1.350	1.150	1.150	1.500	1.390
25	M37 X 1.0	1.780	1.580	1.480	1.260	1.260	1.625	1.520

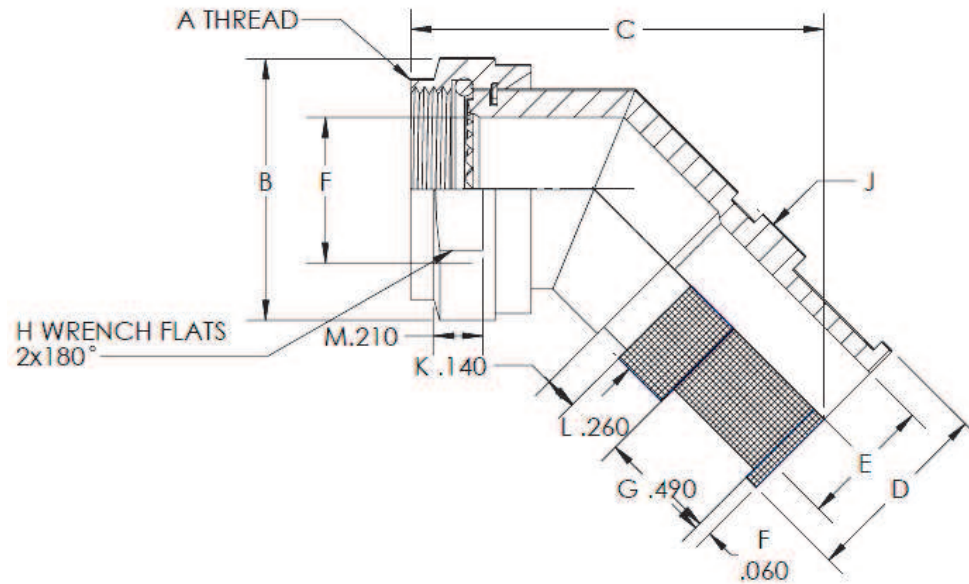
# HellermannTyton

**DISCLAIMER**  
ALL INFORMATION IN THIS SPECIFICATION, INCLUDING ILLUSTRATIONS, IS BELIEVED TO BE RELIABLE. READERS, HOWEVER, SHOULD INDEPENDENTLY EVALUATE THE SUITABILITY OF EACH PRODUCT FOR THEIR APPLICATION. HELLERMANN TYTON MAKES NO WARRANTIES AS TO THE ACCURACY OR COMPLETENESS OF THE INFORMATION, AND DISCLAIMS ANY LIABILITY REGARDING ITS USE. SPECIFICATIONS ARE SUBJECT TO CHANGE WITHOUT NOTICE. IN ADDITION, HELLERMANN TYTON RESERVES THE RIGHT TO MAKE CHANGES—WITHOUT NOTIFICATION TO CUSTOMERS—TO PROCESSING OR MATERIALS THAT DO NOT AFFECT COMPLIANCE WITH ANY APPLICABLE SPECIFICATION.

Cage Code K0720

# HT7406 - 45 DEGREE ADAPTER, WRENCH FLATS (12387117)

MIL-DTL-38999 SERIES III; MIL-DTL-38999 SERIES IV



HT7 4 06 - 11 - 6 - 8

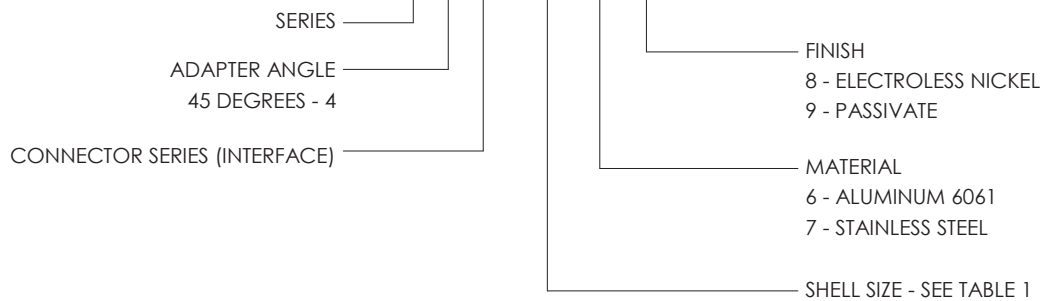


TABLE 1 - All Dimensions in Inches

Shell Size	A Thread Type	B Max	C Ref	D Dia Max	E Dia Max	F Dia Max	H +.003 -.015	J Dia Max
09	M12 X 1.0	0.780	1.570	0.530	0.270	0.270	0.625	0.560
11	M15 X 1.0	0.910	1.590	0.610	0.410	0.410	0.750	0.640
13	M18 X 1.0	1.030	1.630	0.780	0.520	0.520	0.875	0.820
15	M22 X 1.0	1.160	1.670	0.840	0.650	0.650	1.000	0.890
17	M25 X 1.0	1.280	1.710	0.960	0.780	0.780	1.125	1.020
19	M28 X 1.0	1.410	1.770	1.040	0.880	0.880	1.250	1.080
21	M31 X 1.0	1.530	1.810	1.220	1.010	1.010	1.375	1.270
23	M34 X 1.0	1.660	1.840	1.350	1.150	1.150	1.500	1.390
25	M37 X 1.0	1.780	1.900	1.480	1.260	1.260	1.625	1.520

**HellermannTyton**

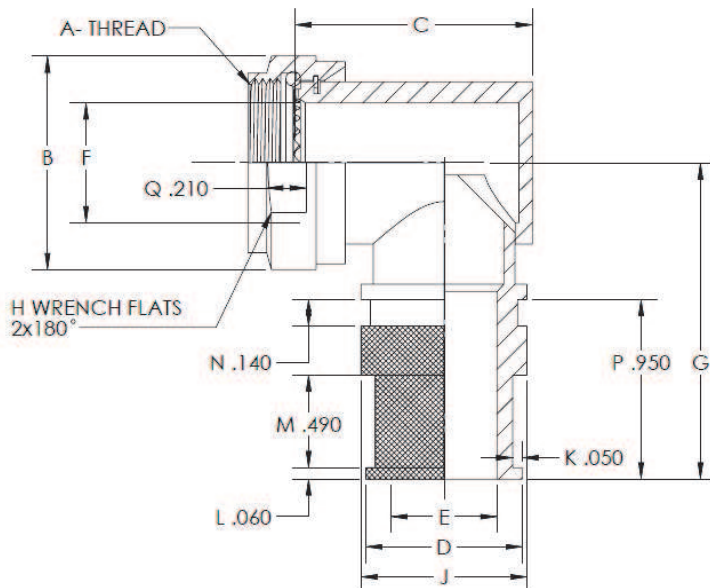
**DISCLAIMER**

ALL INFORMATION IN THIS SPECIFICATION, INCLUDING ILLUSTRATIONS, IS BELIEVED TO BE RELIABLE. READERS, HOWEVER, SHOULD INDEPENDENTLY EVALUATE THE SUITABILITY OF EACH PRODUCT FOR THEIR APPLICATION. HELLERMANN TYTON MAKES NO WARRANTIES AS TO THE ACCURACY OR COMPLETENESS OF THE INFORMATION, AND DISCLAIMS ANY LIABILITY REGARDING ITS USE. SPECIFICATIONS ARE SUBJECT TO CHANGE WITHOUT NOTICE. IN ADDITION, HELLERMANN TYTON RESERVES THE RIGHT TO MAKE CHANGES—WITHOUT NOTIFICATION TO CUSTOMERS—TO PROCESSING OR MATERIALS THAT DO NOT AFFECT COMPLIANCE WITH ANY APPLICABLE SPECIFICATION.

Cage Code K0720

# HT7906 - 90 DEGREE ADAPTER, WRENCH FLATS (12387119)

MIL-DTL-38999 SERIES III; MIL-DTL-38999 SERIES IV



HT7 9 06 - 11 - 6 - 8

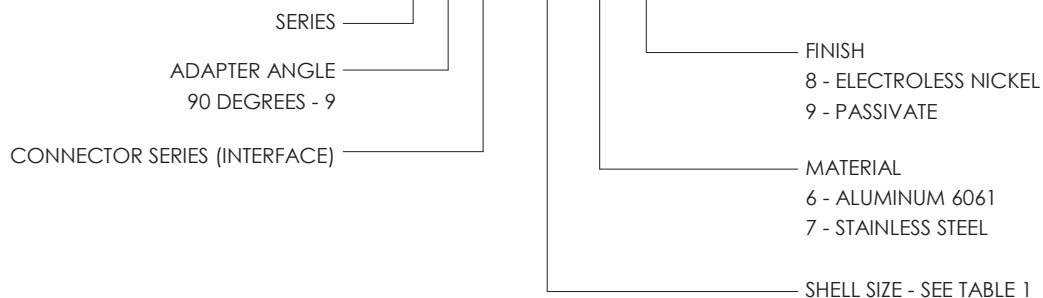


TABLE 1 - All Dimensions in Inches

Shell Size	A Thread Type	B Max	C Ref	D Dia Max	E Dia Max	F Dia Max	H +.003 -.015	J Dia Max	G Ref
09	M12 X 1.0	0.780	0.890	0.530	0.270	0.270	0.625	0.560	1.480
11	M15 X 1.0	0.910	1.020	0.610	0.410	0.410	0.750	0.640	1.560
13	M18 X 1.0	1.030	1.140	0.780	0.520	0.520	0.875	0.820	1.620
15	M22 X 1.0	1.160	1.260	0.840	0.650	0.650	1.000	0.890	1.680
17	M25 X 1.0	1.280	1.400	0.960	0.780	0.780	1.125	1.020	1.740
19	M28 X 1.0	1.410	1.560	1.040	0.880	0.880	1.250	1.080	1.760
21	M31 X 1.0	1.530	1.650	1.220	1.010	1.010	1.375	1.270	1.830
23	M34 X 1.0	1.660	1.770	1.350	1.150	1.150	1.500	1.390	1.890
25	M37 X 1.0	1.780	1.890	1.480	1.260	1.260	1.625	1.520	1.910

# HellermannTyton

**DISCLAIMER**  
ALL INFORMATION IN THIS SPECIFICATION, INCLUDING ILLUSTRATIONS, IS BELIEVED TO BE RELIABLE. READERS, HOWEVER, SHOULD INDEPENDENTLY EVALUATE THE SUITABILITY OF EACH PRODUCT FOR THEIR APPLICATION. HELLERMANN TYTON MAKES NO WARRANTIES AS TO THE ACCURACY OR COMPLETENESS OF THE INFORMATION, AND DISCLAIMS ANY LIABILITY REGARDING ITS USE. SPECIFICATIONS ARE SUBJECT TO CHANGE WITHOUT NOTICE. IN ADDITION, HELLERMANN TYTON RESERVES THE RIGHT TO MAKE CHANGES—WITHOUT NOTIFICATION TO CUSTOMERS—TO PROCESSING OR MATERIALS THAT DO NOT AFFECT COMPLIANCE WITH ANY APPLICABLE SPECIFICATION.

Cage Code K0720

## APPROVED SOURCE TACOM ADAPTER CROSS REFERENCE

TACOM ITEM	HELLERMANN ITEM	TACOM ITEM	HELLERMANN ITEM	TACOM ITEM	HELLERMANN ITEM
12347630-1	HE100-1	12387121-17	HT7402-22-7-9	12387118-18	HT7006-25-7-9
12347630-2	HE200-2	12387121-18	HT7402-24-7-9	12387117-1	HT7406-09-6-8
12347630-3	HE300-3	12387120-1	HT7902-08-6-8	12387117-2	HT7406-11-6-8
12347630-4	HE400-4	12387120-2	HT7902-10-6-8	12387117-3	HT7406-13-6-8
12347631-1	HT7002-08-6-8	12387120-3	HT7902-12-6-8	12387117-4	HT7406-15-6-8
12347631-2	HT7002-10-6-8	12387120-4	HT7902-14-6-8	12387117-5	HT7406-17-6-8
12347631-3	HT7002-12-6-8	12387120-5	HT7902-16-6-8	12387117-6	HT7406-19-6-8
12347631-4	HT7002-14-6-8	12387120-6	HT7902-18-6-8	12387117-7	HT7406-21-6-8
12347631-5	HT7002-16-6-8	12387120-7	HT7902-20-6-8	12387117-8	HT7406-23-6-8
12347631-6	HT7002-18-6-8	12387120-8	HT7902-22-6-8	12387117-9	HT7406-25-6-8
12347631-7	HT7002-20-6-8	12387120-9	HT7902-24-6-8	12387117-10	HT7406-09-7-9
12347631-8	HT7002-22-6-8	12387120-10	HT7902-08-7-9	12387117-11	HT7406-11-7-9
12347631-9	HT7002-24-6-8	12387120-11	HT7902-10-7-9	12387117-12	HT7406-13-7-9
12347631-10	HT7002-08-7-9	12387120-12	HT7902-12-7-9	12387117-13	HT7406-15-7-9
12347631-11	HT7002-10-7-9	12387120-13	HT7902-14-7-9	12387117-14	HT7406-17-7-9
12347631-12	HT7002-12-7-9	12387120-14	HT7902-16-7-9	12387117-15	HT7406-19-7-9
12347631-13	HT7002-14-7-9	12387120-15	HT7902-18-7-9	12387117-16	HT7406-21-7-9
12347631-14	HT7002-16-7-9	12387120-16	HT7902-20-7-9	12387117-17	HT7406-23-7-9
12347631-15	HT7002-18-7-9	12387120-17	HT7902-22-7-9	12387117-18	HT7406-25-7-9
12347631-16	HT7002-20-7-9	12387120-18	HT7902-24-7-9	12387119-1	HT7906-09-6-8
12347631-17	HT7002-22-7-9	12387178	HT7909-15-6-8	12387119-2	HT7906-11-6-8
12347631-18	HT7002-24-7-9	12387118-1	HT7006-09-6-8	12387119-3	HT7906-13-6-8
12387121-1	HT7402-08-6-8	12387118-2	HT7006-11-6-8	12387119-4	HT7906-15-6-8
12387121-2	HT7402-10-6-8	12387118-3	HT7006-13-6-8	12387119-5	HT7906-17-6-8
12387121-3	HT7402-12-6-8	12387118-4	HT7006-15-6-8	12387119-6	HT7906-19-6-8
12387121-4	HT7402-14-6-8	12387118-5	HT7006-17-6-8	12387119-7	HT7906-21-6-8
12387121-5	HT7402-16-6-8	12387118-6	HT7006-19-6-8	12387119-8	HT7906-23-6-8
12387121-6	HT7402-18-6-8	12387118-7	HT7006-21-6-8	12387119-9	HT7906-25-6-8
12387121-7	HT7402-20-6-8	12387118-8	HT7006-23-6-8	12387119-10	HT7906-09-7-9
12387121-8	HT7402-22-6-8	12387118-9	HT7006-25-6-8	12387119-11	HT7906-11-7-9
12387121-9	HT7402-24-6-8	12387118-10	HT7006-09-7-9	12387119-12	HT7906-13-7-9
12387121-10	HT7402-08-7-9	12387118-11	HT7006-11-7-9	12387119-13	HT7906-15-7-9
12387121-11	HT7402-10-7-9	12387118-12	HT7006-13-7-9	12387119-14	HT7906-17-7-9
12387121-12	HT7402-12-7-9	12387118-13	HT7006-15-7-9	12387119-15	HT7906-19-7-9
12387121-13	HT7402-14-7-9	12387118-14	HT7006-17-7-9	12387119-16	HT7906-21-7-9
12387121-14	HT7402-16-7-9	12387118-15	HT7006-19-7-9	12387119-17	HT7906-23-7-9
12387121-15	HT7402-18-7-9	12387118-16	HT7006-21-7-9	12387119-18	HT7906-25-7-9
12387121-16	HT7402-20-7-9	12387118-17	HT7006-23-7-9		



**DISCLAIMER**

ALL INFORMATION IN THIS SPECIFICATION, INCLUDING ILLUSTRATIONS, IS BELIEVED TO BE RELIABLE. READERS, HOWEVER, SHOULD INDEPENDENTLY EVALUATE THE SUITABILITY OF EACH PRODUCT FOR THEIR APPLICATION. HELLERMANN TYTON MAKES NO WARRANTIES AS TO THE ACCURACY OR COMPLETENESS OF THE INFORMATION, AND DISCLAIMS ANY LIABILITY REGARDING ITS USE. SPECIFICATIONS ARE SUBJECT TO CHANGE WITHOUT NOTICE. IN ADDITION, HELLERMANN TYTON RESERVES THE RIGHT TO MAKE CHANGES—WITHOUT NOTIFICATION TO CUSTOMERS—TO PROCESSING OR MATERIALS THAT DO NOT AFFECT COMPLIANCE WITH ANY APPLICABLE SPECIFICATION.

**Cage Code K0720**

## TACOM SHIELD SOCK ADAPTER CROSS REFERENCE

The table below has some items with an 'x' in place of the finish. For these items please replace the 'x' with one of the following:

<b>TACOM Item</b>	<b>HellermannTyton Item</b>	<b>Finish</b>
1	H	Clear Cadmium
2	C	Electroless Nickel

TACOM ITEM	HELLERMANN ITEM	TACOM ITEM	HELLERMANN ITEM	TACOM ITEM	HELLERMANN ITEM
12273160-081x	HBA1-0804-1-x-6	12273145-165x	HBA2-1610-1-x-6	12273146-228x	HBA3-2216-1-x-6
12273160-102x	HBA1-1005-1-x-6	12273145-183x	HBA2-1807-1-x-6	12273146-245x	HBA3-2410-1-x-6
12273160-123x	HBA1-1207-1-x-6	12273145-186x	HBA2-1812-1-x-6	12273146-248x	HBA3-2416-1-x-6
12273160-142x	HBA1-1405-1-x-6	12273145-204x	HBA2-2008-1-x-6	12273146-286x	HBA3-2812-1-x-6
12273160-144x	HBA1-1408-1-x-6	12273145-207x	HBA2-2014-1-x-6	12273146-288x	HBA3-2816-1-x-6
12273160-162x	HBA1-1605-1-x-6	12273145-225x	HBA2-2210-1-x-6	12273146-326x	HBA3-3212-1-x-6
12273160-165x	HBA1-1610-1-x-6	12273145-228x	HBA2-2216-1-x-6	12273146-329x	HBA3-3220-1-x-6
12273160-183x	HBA1-1807-1-x-6	12273145-245x	HBA2-2410-1-x-6	12345882-09	HBFI-0904-1-H-6
12273160-186x	HBA1-1812-1-x-6	12273145-248x	HBA2-2416-1-x-6	12345882-11	HBFI-1105-1-H-6
12273160-204x	HBA1-2008-1-x-6	12273145-286x	HBA2-2812-1-x-6	12345882-13	HBFI-1306-1-H-6
12273160-207x	HBA1-2014-1-x-6	12273145-288x	HBA2-2816-1-x-6	12345882-15	HBFI-1508-1-H-6
12273160-225x	HBA1-2210-1-x-6	12273145-326x	HBA2-3212-1-x-6	12345882-17	HBFI-1710-1-H-6
12273160-228x	HBA1-2216-1-x-6	12273145-329x	HBA2-3220-1-x-6	12345882-19	HBFI-1912-1-H-6
12273160-245x	HBA1-2410-1-x-6	12273146-081x	HBA3-0804-1-x-6	12345882-21	HBFI-2114-1-H-6
12273160-248x	HBA1-2416-1-x-6	12273146-102x	HBA3-1005-1-x-6	12345882-23	HBFI-2316-1-H-6
12273160-286x	HBA1-2812-1-x-6	12273146-123x	HBA3-1207-1-x-6	12345882-25	HBFI-2516-1-H-6
12273160-288x	HBA1-2816-1-x-6	12273146-142x	HBA3-1405-1-x-6	12324397-09	HBH1-0904-1-H-6
12273160-326x	HBA1-3212-1-x-6	12273146-144x	HBA3-1408-1-x-6	12324397-11	HBH1-1105-1-H-6
12273160-329x	HBA1-3220-1-x-6	12273146-162x	HBA3-1605-1-x-6	12324397-13	HBH1-1306-1-H-6
12273145-081x	HBA2-0804-1-x-6	12273146-165x	HBA3-1610-1-x-6	12324397-15	HBH1-1508-1-H-6
12273145-102x	HBA2-1005-1-x-6	12273146-183x	HBA3-1807-1-x-6	12324397-17	HBH1-1710-1-H-6
12273145-123x	HBA2-1207-1-x-6	12273146-186x	HBA3-1812-1-x-6	12324397-19	HBH1-1912-1-H-6
12273145-142x	HBA2-1405-1-x-6	12273146-204x	HBA3-2008-1-x-6	12324397-21	HBH1-2114-1-H-6
12273145-144x	HBA2-1408-1-x-6	12273146-207x	HBA3-2014-1-x-6	12324397-23	HBH1-2316-1-H-6
12273145-162x	HBA2-1605-1-x-6	12273146-225x	HBA3-2210-1-x-6	12324397-25	HBH1-2516-1-H-6



**DISCLAIMER**

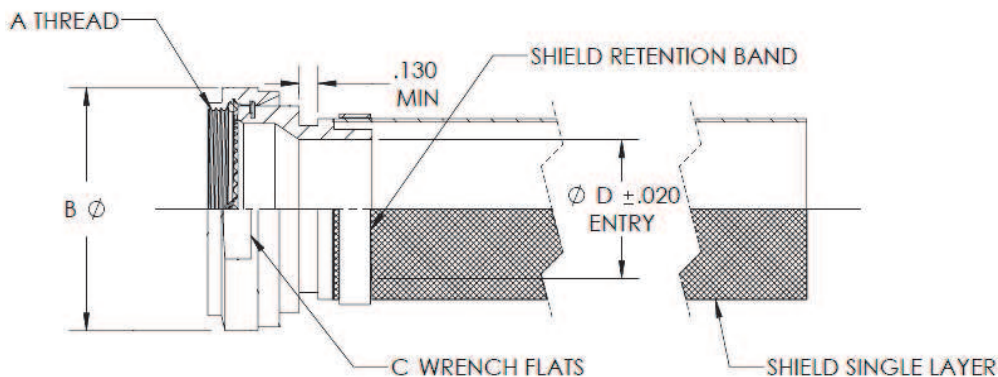
ALL INFORMATION IN THIS SPECIFICATION, INCLUDING ILLUSTRATIONS, IS BELIEVED TO BE RELIABLE. READERS, HOWEVER, SHOULD INDEPENDENTLY EVALUATE THE SUITABILITY OF EACH PRODUCT FOR THEIR APPLICATION. HELLERMANN TYTON MAKES NO WARRANTIES AS TO THE ACCURACY OR COMPLETENESS OF THE INFORMATION, AND DISCLAIMS ANY LIABILITY REGARDING ITS USE. SPECIFICATIONS ARE SUBJECT TO CHANGE WITHOUT NOTICE. IN ADDITION, HELLERMANN TYTON RESERVES THE RIGHT TO MAKE CHANGES—WITHOUT NOTIFICATION TO CUSTOMERS—TO PROCESSING OR MATERIALS THAT DO NOT AFFECT COMPLIANCE WITH ANY APPLICABLE SPECIFICATION.

**Cage Code K0720**

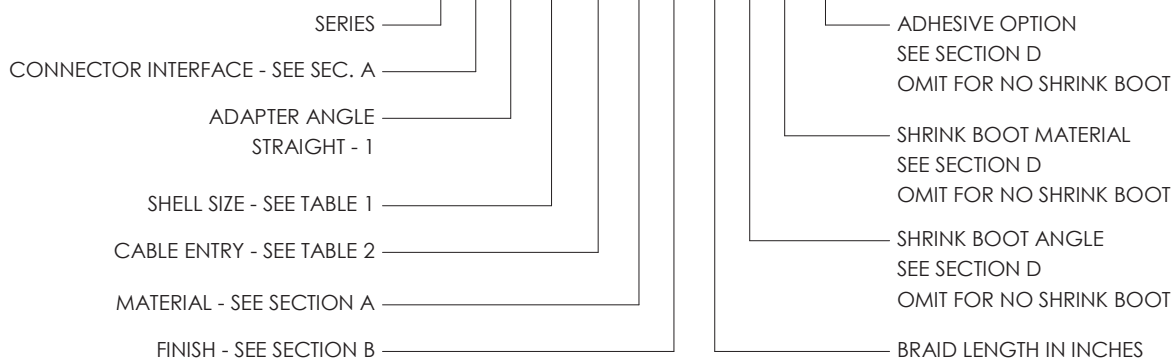
# HB SERIES - STRAIGHT ADAPTER, SHIELD SOCK, WRENCH FLATS (12273160)

MIL-DTL-5015 CRIMP; MIL-DTL-26482 SERIES II;

MIL-DTL-83723 SERIES III



HB A 1 - 14 03 - 1 - C - 6 - S G U



**TABLE 2 - All Dimensions in Inches**

Cable Entry	D
02	0.125
04	0.250
06	0.375
08	0.500
10	0.625
12	0.750
14	0.875
16	1.000
18	1.125
20	1.250
22	1.375
24	1.500

ADDITIONAL ENTRY SIZES CAN BE FOUND IN SECTION C

**TABLE 1 - All Dimensions in Inches**

Shell Size	A Thread Type	B Max	C Wrench Flats
08	.500-20 UNF	0.781	0.625
10	.625-24 UNEF	0.906	0.750
12	.750-20 UNEF	1.031	0.875
14	.875-20 UNEF	1.156	1.000
16	1.000-20 UNEF	1.281	1.125
18	1.0625-18 UNEF	1.343	1.188
20	1.1875-18 UNEF	1.470	1.312
22	1.3125-18 UNEF	1.590	1.438
24	1.4375-18 UNEF	1.720	1.562
28	1.750-18 UNS	2.031	1.875
32	2.000-18 UNS	2.125	2.125

**HellermannTyton**

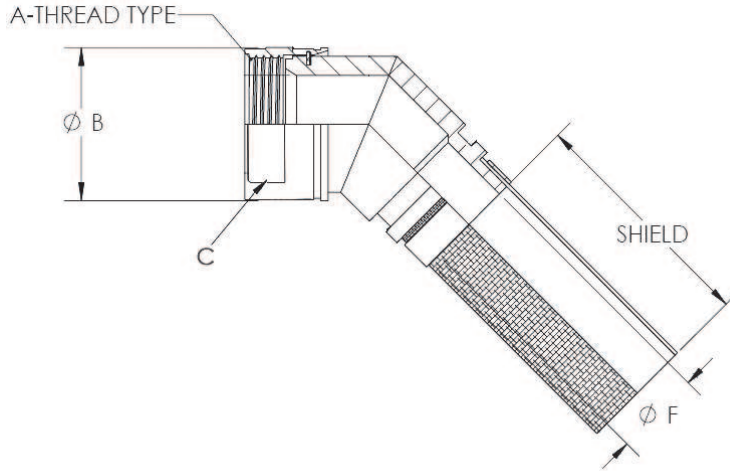
**DISCLAIMER**

ALL INFORMATION IN THIS SPECIFICATION, INCLUDING ILLUSTRATIONS, IS BELIEVED TO BE RELIABLE. READERS, HOWEVER, SHOULD INDEPENDENTLY EVALUATE THE SUITABILITY OF EACH PRODUCT FOR THEIR APPLICATION. HELLERMANN TYTON MAKES NO WARRANTIES AS TO THE ACCURACY OR COMPLETENESS OF THE INFORMATION, AND DISCLAIMS ANY LIABILITY REGARDING ITS USE. SPECIFICATIONS ARE SUBJECT TO CHANGE WITHOUT NOTICE. IN ADDITION, HELLERMANN TYTON RESERVES THE RIGHT TO MAKE CHANGES—WITHOUT NOTIFICATION TO CUSTOMERS—TO PROCESSING OR MATERIALS THAT DO NOT AFFECT COMPLIANCE WITH ANY APPLICABLE SPECIFICATION.

Cage Code K0720

# HB SERIES - 45 DEGREE ADAPTER, SHIELD SOCK, WRENCH FLATS (12273145)

MIL-DTL-5015 CRIMP; MIL-DTL-26482 SERIES II;  
MIL-DTL-83723 SERIES III



**HB A 2 - 14 03 - 1 - C - 6 - S G U**

- SERIES —————
- CONNECTOR INTERFACE - SEE SEC. A —————
- ADAPTER ANGLE  
45 DEGREES - 2 —————
- SHELL SIZE - SEE TABLE 1 —————
- CABLE ENTRY - SEE TABLE 2 —————
- MATERIAL - SEE SECTION A —————
- FINISH - SEE SECTION B —————
- ADHESIVE OPTION  
SEE SECTION D  
OMIT FOR NO SHRINK BOOT —————
- SHRINK BOOT MATERIAL  
SEE SECTION D  
OMIT FOR NO SHRINK BOOT —————
- SHRINK BOOT ANGLE  
SEE SECTION D  
OMIT FOR NO SHRINK BOOT —————
- BRAID LENGTH IN INCHES —————

**TABLE 1 - All Dimensions in Inches**

Shell Size	A Thread Type	B Max	C Wrench Flats
08	.500-20 UNF	.781	.625
10	.625-24 UNEF	.906	.750
12	.750-20 UNEF	1.031	.875
14	.875-20 UNEF	1.156	1.00
16	1.000-20 UNEF	1.281	1.125
18	1.0625-18 UNEF	1.343	1.188
20	1.1875-18 UNEF	1.47	1.312
22	1.3125-18 UNEF	1.59	1.438
24	1.4375-18 UNEF	1.72	1.562
28	1.750-18 UNS	2.031	1.875
32	2.000-18 UNS	2.125	2.125

**TABLE 2 - All Dimensions in Inches**

Cable Entry	F REF
02	0.125
04	0.250
06	0.375
08	0.500
10	0.625
12	0.750
14	0.875
16	1.000
18	1.125
20	1.250
22	1.375
24	1.500

ADDITIONAL ENTRY SIZES CAN BE FOUND IN SECTION C

## HellermannTyton

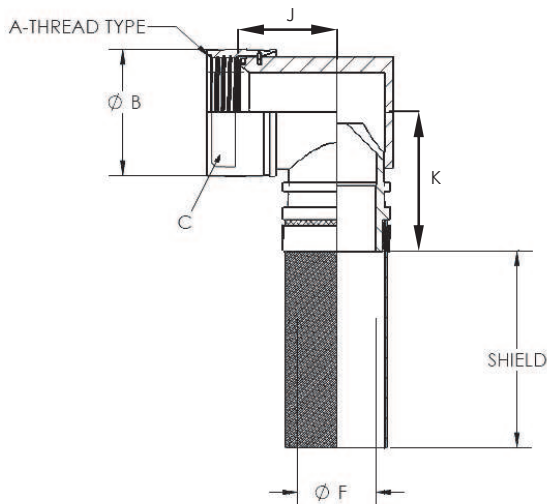
**DISCLAIMER**

ALL INFORMATION IN THIS SPECIFICATION, INCLUDING ILLUSTRATIONS, IS BELIEVED TO BE RELIABLE. READERS, HOWEVER, SHOULD INDEPENDENTLY EVALUATE THE SUITABILITY OF EACH PRODUCT FOR THEIR APPLICATION. HELLERMANN TYTON MAKES NO WARRANTIES AS TO THE ACCURACY OR COMPLETENESS OF THE INFORMATION, AND DISCLAIMS ANY LIABILITY REGARDING ITS USE. SPECIFICATIONS ARE SUBJECT TO CHANGE WITHOUT NOTICE. IN ADDITION, HELLERMANN TYTON RESERVES THE RIGHT TO MAKE CHANGES—WITHOUT NOTIFICATION TO CUSTOMERS—TO PROCESSING OR MATERIALS THAT DO NOT AFFECT COMPLIANCE WITH ANY APPLICABLE SPECIFICATION.

**Cage Code K0720**

# HB SERIES - 90 DEGREE ADAPTER, SHIELD SOCK, WRENCH FLATS (12273146)

MIL-DTL-5015 CRIMP; MIL-DTL-26482 SERIES II;  
MIL-DTL-83723 SERIES III



**HB A 3 - 14 03 - 1 - C - 6 - S G U**

- SERIES
- CONNECTOR INTERFACE - SEE SEC. A
- ADAPTER ANGLE  
90 DEGREES - 3
- SHELL SIZE - SEE TABLE 1
- CABLE ENTRY - SEE TABLE 2
- MATERIAL - SEE SECTION A
- FINISH - SEE SECTION B
- ADHESIVE OPTION  
SEE SECTION D  
OMIT FOR NO SHRINK BOOT
- SHRINK BOOT MATERIAL  
SEE SECTION D  
OMIT FOR NO SHRINK BOOT
- SHRINK BOOT ANGLE  
SEE SECTION D  
OMIT FOR NO SHRINK BOOT
- BRAID LENGTH IN INCHES

Cable Entry	F REF
02	0.125
04	0.250
06	0.375
08	0.500
10	0.625
12	0.750
14	0.875
16	1.000
18	1.125
20	1.250
22	1.375
24	1.500

ADDITIONAL ENTRY SIZES CAN BE FOUND IN SECTION C

Shell Size	A Thread Type	B Max	C Wrench Flats	J REF	K REF
08	.500-20 UNF	.781	.625	.635	1.47
10	.625-24 UNEF	.906	.750	.663	1.56
12	.750-20 UNEF	1.031	.875	.695	1.62
14	.875-20 UNEF	1.156	1.00	.718	1.70
16	1.000-20 UNEF	1.281	1.125	.795	1.76
18	1.0625-18 UNEF	1.343	1.188	.861	1.77
20	1.1875-18 UNEF	1.47	1.312	.882	1.84
22	1.3125-18 UNEF	1.59	1.438	.946	1.90
24	1.4375-18 UNEF	1.72	1.562	.888	1.93
28	1.750-18 UNS	2.031	1.875	1.044	2.08
32	2.000-18 UNS	2.125	2.125	1.417	2.20

**HellermannTyton**

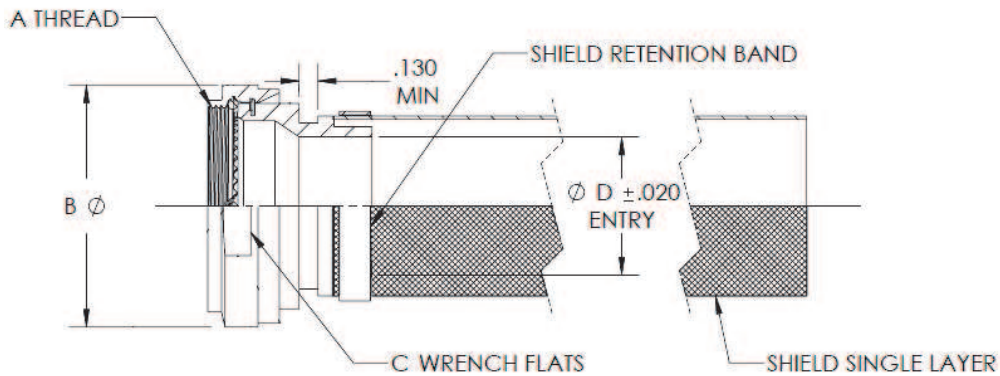
**DISCLAIMER**

ALL INFORMATION IN THIS SPECIFICATION, INCLUDING ILLUSTRATIONS, IS BELIEVED TO BE RELIABLE. READERS, HOWEVER, SHOULD INDEPENDENTLY EVALUATE THE SUITABILITY OF EACH PRODUCT FOR THEIR APPLICATION. HELLERMANN TYTON MAKES NO WARRANTIES AS TO THE ACCURACY OR COMPLETENESS OF THE INFORMATION, AND DISCLAIMS ANY LIABILITY REGARDING ITS USE. SPECIFICATIONS ARE SUBJECT TO CHANGE WITHOUT NOTICE. IN ADDITION, HELLERMANN TYTON RESERVES THE RIGHT TO MAKE CHANGES—WITHOUT NOTIFICATION TO CUSTOMERS—TO PROCESSING OR MATERIALS THAT DO NOT AFFECT COMPLIANCE WITH ANY APPLICABLE SPECIFICATION.

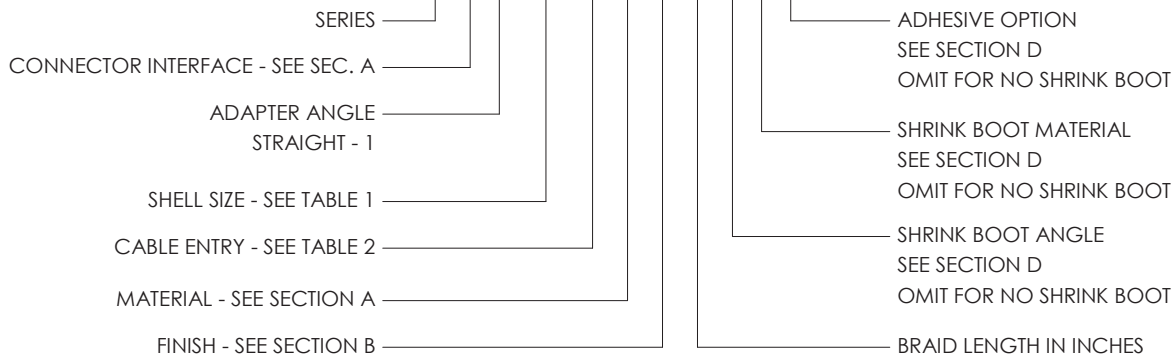
Cage Code K0720

# HB SERIES - STRAIGHT ADAPTER, SHIELD SOCK, WRENCH FLATS (12345882)

MIL-DTL-38999 SERIES I; MIL-DTL-38999 SERIES II



**HB F 1 - 15 03 - 1 - H - 6 - S G U**



**TABLE 1 - All Dimensions in Inches**

Shell Size	A Thread Type	B Max	C Wrench Flats
09	.4375-28 UNEF	0.781	0.625
11	.5625-24 UNEF	0.906	0.750
13	.6875-24 UNEF	1.034	0.875
15	.8125-20 UNEF	1.156	1.000
17	.9375-20 UNEF	1.281	1.125
19	1.0625-18 UNEF	1.406	1.188
21	1.1875-18 UNEF	1.531	1.312
23	1.3125-18 UNEF	1.656	1.438
25	1.4375-18 UNEF	1.781	1.562

**TABLE 2 - All Dimensions in Inches**

Cable Entry	D
02	0.125
04	0.250
06	0.375
08	0.500
10	0.625
12	0.750
14	0.875
16	1.000
18	1.125
20	1.250
22	1.375
24	1.500

ADDITIONAL ENTRY SIZES CAN BE FOUND IN SECTION C

**HellermannTyton**

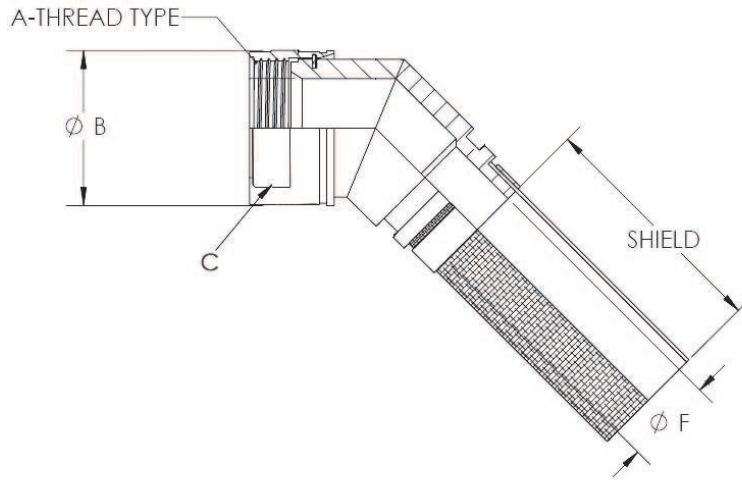
**DISCLAIMER**

ALL INFORMATION IN THIS SPECIFICATION, INCLUDING ILLUSTRATIONS, IS BELIEVED TO BE RELIABLE. READERS, HOWEVER, SHOULD INDEPENDENTLY EVALUATE THE SUITABILITY OF EACH PRODUCT FOR THEIR APPLICATION. HELLERMANN TYTON MAKES NO WARRANTIES AS TO THE ACCURACY OR COMPLETENESS OF THE INFORMATION, AND DISCLAIMS ANY LIABILITY REGARDING ITS USE. SPECIFICATIONS ARE SUBJECT TO CHANGE WITHOUT NOTICE. IN ADDITION, HELLERMANN TYTON RESERVES THE RIGHT TO MAKE CHANGES—WITHOUT NOTIFICATION TO CUSTOMERS—TO PROCESSING OR MATERIALS THAT DO NOT AFFECT COMPLIANCE WITH ANY APPLICABLE SPECIFICATION.

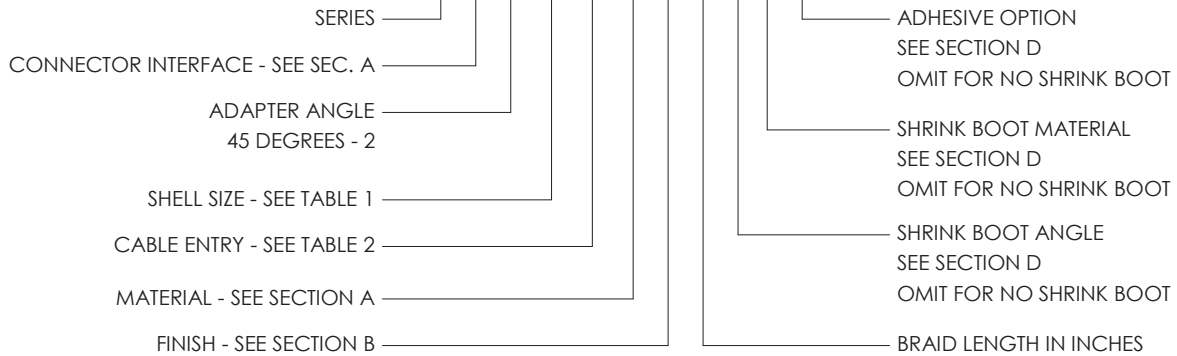
Cage Code K0720

# HB SERIES - 45 DEGREE ADAPTER, SHIELD SOCK, WRENCH FLATS

MIL-DTL-38999 SERIES I; MIL-DTL-38999 SERIES II



**HB F 2 - 15 03 - 1 - H - 6 - S G U**



**TABLE 2 - All Dimensions in Inches**

Cable Entry	F REF
02	0.125
04	0.250
06	0.375
08	0.500
10	0.625
12	0.750
14	0.875
16	1.000
18	1.125
20	1.250
22	1.375
24	1.500

ADDITIONAL ENTRY SIZES CAN BE FOUND IN SECTION C

**TABLE 1 - All Dimensions in Inches**

Shell Size	A Thread Type	B Max	C Wrench Flats
09	.4375-28 UNEF	0.781	0.625
11	.5625-24 UNEF	0.906	0.750
13	.6875-24 UNEF	1.034	0.875
15	.8125-20 UNEF	1.156	1.000
17	.9375-20 UNEF	1.281	1.125
19	1.0625-18 UNEF	1.406	1.250
21	1.1875-18 UNEF	1.531	1.375
23	1.3125-18 UNEF	1.656	1.500
25	1.4375-18 UNEF	1.781	1.625

**HellermannTyton**

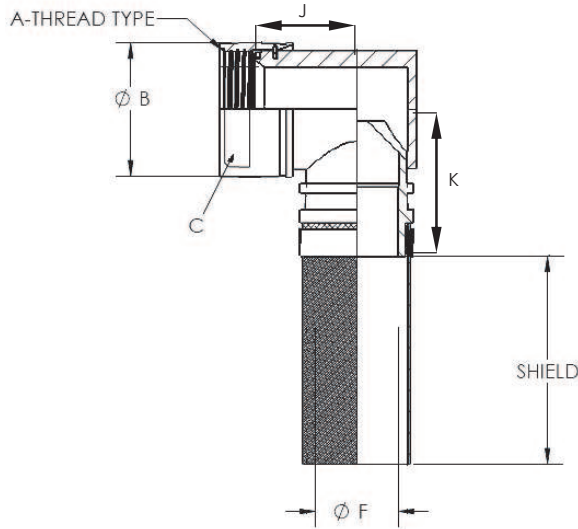
**DISCLAIMER**

ALL INFORMATION IN THIS SPECIFICATION, INCLUDING ILLUSTRATIONS, IS BELIEVED TO BE RELIABLE. READERS, HOWEVER, SHOULD INDEPENDENTLY EVALUATE THE SUITABILITY OF EACH PRODUCT FOR THEIR APPLICATION. HELLERMANN TYTON MAKES NO WARRANTIES AS TO THE ACCURACY OR COMPLETENESS OF THE INFORMATION, AND DISCLAIMS ANY LIABILITY REGARDING ITS USE. SPECIFICATIONS ARE SUBJECT TO CHANGE WITHOUT NOTICE. IN ADDITION, HELLERMANN TYTON RESERVES THE RIGHT TO MAKE CHANGES—WITHOUT NOTIFICATION TO CUSTOMERS—TO PROCESSING OR MATERIALS THAT DO NOT AFFECT COMPLIANCE WITH ANY APPLICABLE SPECIFICATION.

Cage Code K0720

# HB SERIES - 90 DEGREE ADAPTER, SHIELD SOCK, WRENCH FLATS

MIL-DTL-38999 SERIES I; MIL-DTL-38999 SERIES II



**HB F 3 - 15 03 - 1 - C - 6 - S G U**

- SERIES —————
- CONNECTOR INTERFACE - SEE SEC. A —————
- ADAPTER ANGLE  
90 DEGREES - 3 —————
- SHELL SIZE - SEE TABLE 1 —————
- CABLE ENTRY - SEE TABLE 2 —————
- MATERIAL - SEE SECTION A —————
- FINISH - SEE SECTION B —————
- ADHESIVE OPTION  
SEE SECTION D  
OMIT FOR NO SHRINK BOOT —————
- SHRINK BOOT MATERIAL  
SEE SECTION D  
OMIT FOR NO SHRINK BOOT —————
- SHRINK BOOT ANGLE  
SEE SECTION D  
OMIT FOR NO SHRINK BOOT —————
- BRAID LENGTH IN INCHES —————

**TABLE 1 - All Dimensions in Inches**

Shell Size	A Thread Type	B Max	C Wrench Flats	J REF	K REF
09	.4375-28 UNEF	0.781	0.625	.574	.963
11	.5625-24 UNEF	0.906	0.750	.641	1.023
13	.6875-24 UNEF	1.034	0.875	.704	1.086
15	.8125-20 UNEF	1.156	1.000	.761	1.148
17	.9375-20 UNEF	1.281	1.125	.838	1.211
19	1.0625-18 UNEF	1.406	1.250	.955	1.273
21	1.1875-18 UNEF	1.531	1.375	.982	1.336
23	1.3125-18 UNEF	1.656	1.500	1.041	1.398
25	1.4375-18 UNEF	1.781	1.625	1.098	1.461

**TABLE 2 - All Dimensions in Inches**

Cable Entry	F REF
02	0.125
04	0.250
06	0.375
08	0.500
10	0.625
12	0.750
14	0.875
16	1.000
18	1.125
20	1.250
22	1.375
24	1.500
ADDITIONAL ENTRY SIZES CAN BE FOUND IN SECTION C	



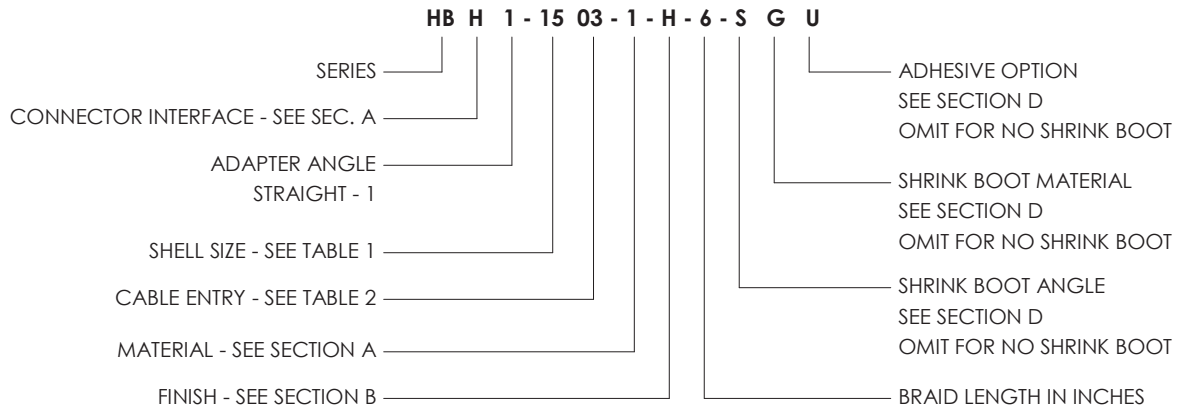
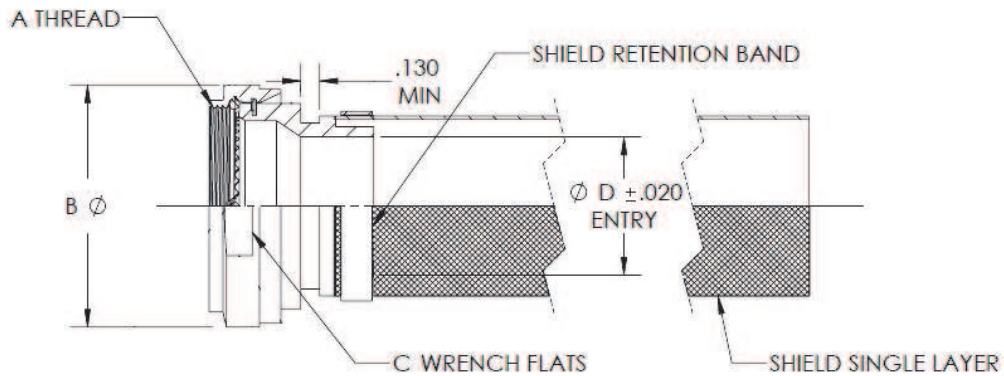
**DISCLAIMER**

ALL INFORMATION IN THIS SPECIFICATION, INCLUDING ILLUSTRATIONS, IS BELIEVED TO BE RELIABLE. READERS, HOWEVER, SHOULD INDEPENDENTLY EVALUATE THE SUITABILITY OF EACH PRODUCT FOR THEIR APPLICATION. HELLERMANN TYTON MAKES NO WARRANTIES AS TO THE ACCURACY OR COMPLETENESS OF THE INFORMATION, AND DISCLAIMS ANY LIABILITY REGARDING ITS USE. SPECIFICATIONS ARE SUBJECT TO CHANGE WITHOUT NOTICE. IN ADDITION, HELLERMANN TYTON RESERVES THE RIGHT TO MAKE CHANGES—WITHOUT NOTIFICATION TO CUSTOMERS—TO PROCESSING OR MATERIALS THAT DO NOT AFFECT COMPLIANCE WITH ANY APPLICABLE SPECIFICATION.

**Cage Code K0720**

# HB SERIES - STRAIGHT ADAPTER, SHIELD SOCK, WRENCH FLATS (12324397)

MIL-DTL-38999 SERIES III; MIL-DTL-38999 SERIES IV



**TABLE 2 - All Dimensions in Inches**

Cable Entry	D
02	0.125
04	0.250
06	0.375
08	0.500
10	0.625
12	0.750
14	0.875
16	1.000
18	1.125
20	1.250
22	1.375
24	1.500

ADDITIONAL ENTRY SIZES CAN BE FOUND IN SECTION C

**TABLE 1 - All Dimensions in Inches**

Shell Size	A Thread Type	B Max	C Wrench Flats
09	M12 X 1.0	0.780	0.625
11	M15 X 1.0	0.910	0.750
13	M18 X 1.0	1.030	0.875
15	M22 X 1.0	1.160	1.000
17	M25 X 1.0	1.280	1.125
19	M28 X 1.0	1.410	1.250
21	M31 X 1.0	1.530	1.375
23	M34 X 1.0	1.660	1.500
25	M37 X 1.0	1.780	1.625



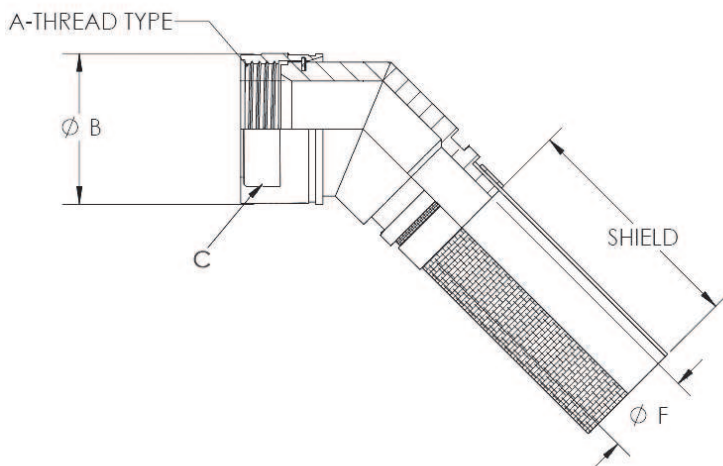
**DISCLAIMER**

ALL INFORMATION IN THIS SPECIFICATION, INCLUDING ILLUSTRATIONS, IS BELIEVED TO BE RELIABLE. READERS, HOWEVER, SHOULD INDEPENDENTLY EVALUATE THE SUITABILITY OF EACH PRODUCT FOR THEIR APPLICATION. HELLERMANN TYTON MAKES NO WARRANTIES AS TO THE ACCURACY OR COMPLETENESS OF THE INFORMATION, AND DISCLAIMS ANY LIABILITY REGARDING ITS USE. SPECIFICATIONS ARE SUBJECT TO CHANGE WITHOUT NOTICE. IN ADDITION, HELLERMANN TYTON RESERVES THE RIGHT TO MAKE CHANGES—WITHOUT NOTIFICATION TO CUSTOMERS—TO PROCESSING OR MATERIALS THAT DO NOT AFFECT COMPLIANCE WITH ANY APPLICABLE SPECIFICATION.

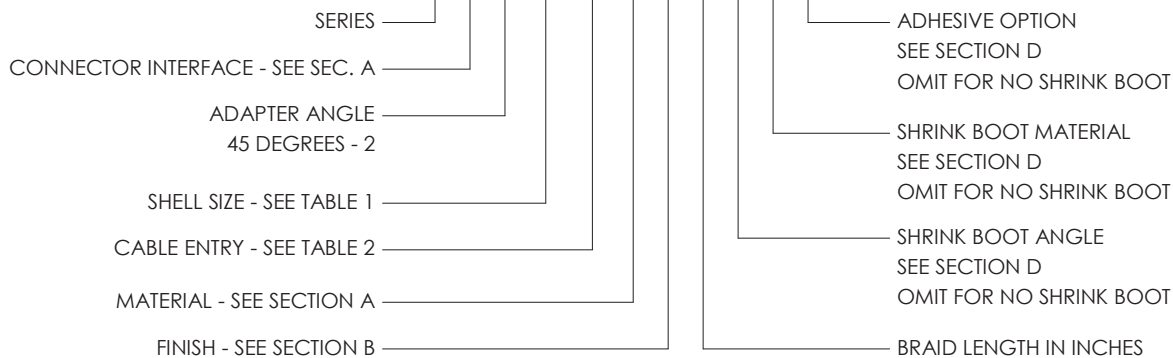
Cage Code K0720

# HB SERIES - 45 DEGREE ADAPTER, SHIELD SOCK, WRENCH FLATS

MIL-DTL-38999 SERIES III; MIL-DTL-38999 SERIES IV



**HB H 2 - 15 03 - 1 - C - 6 - S G U**



**TABLE 1 - All Dimensions in Inches**

Shell Size	A Thread Type	B Max	C Wrench Flats
09	M12 X 1.0	0.780	0.625
11	M15 X 1.0	0.910	0.750
13	M18 X 1.0	1.030	0.875
15	M22 X 1.0	1.160	1.000
17	M25 X 1.0	1.280	1.125
19	M28 X 1.0	1.410	1.250
21	M31 X 1.0	1.530	1.375
23	M34 X 1.0	1.660	1.500
25	M37 X 1.0	1.780	1.625

**TABLE 2 - All Dimensions in Inches**

Cable Entry	F REF
02	0.125
04	0.250
06	0.375
08	0.500
10	0.625
12	0.750
14	0.875
16	1.000
18	1.125
20	1.250
22	1.375
24	1.500

ADDITIONAL ENTRY SIZES CAN BE FOUND IN SECTION C

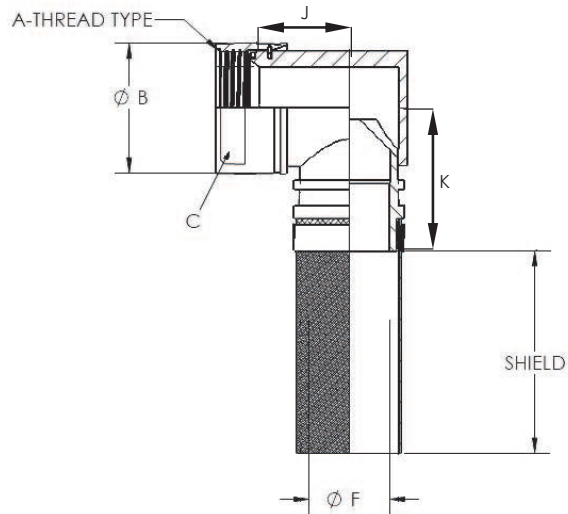
**HellermannTyton**

**DISCLAIMER**  
 ALL INFORMATION IN THIS SPECIFICATION, INCLUDING ILLUSTRATIONS, IS BELIEVED TO BE RELIABLE. READERS, HOWEVER, SHOULD INDEPENDENTLY EVALUATE THE SUITABILITY OF EACH PRODUCT FOR THEIR APPLICATION. HELLERMANN TYTON MAKES NO WARRANTIES AS TO THE ACCURACY OR COMPLETENESS OF THE INFORMATION, AND DISCLAIMS ANY LIABILITY REGARDING ITS USE. SPECIFICATIONS ARE SUBJECT TO CHANGE WITHOUT NOTICE. IN ADDITION, HELLERMANN TYTON RESERVES THE RIGHT TO MAKE CHANGES—WITHOUT NOTIFICATION TO CUSTOMERS—TO PROCESSING OR MATERIALS THAT DO NOT AFFECT COMPLIANCE WITH ANY APPLICABLE SPECIFICATION.

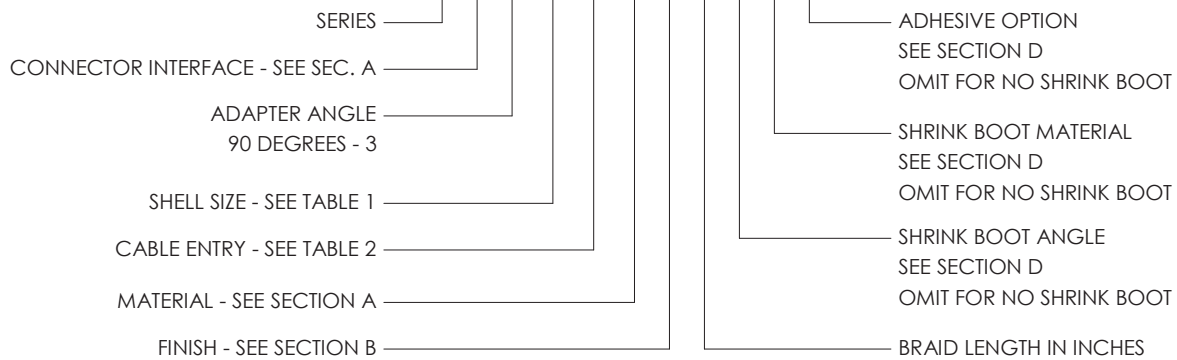
Cage Code K0720

# HB SERIES - 90 DEGREE ADAPTER, SHIELD SOCK, WRENCH FLATS

MIL-DTL-38999 SERIES III; MIL-DTL-38999 SERIES IV



**HB H 3 - 15 03 - 1 - C - 6 - S G U**



**TABLE 2 - All Dimensions in Inches**

Cable Entry	F REF
02	0.125
04	0.250
06	0.375
08	0.500
10	0.625
12	0.750
14	0.875
16	1.000
18	1.125
20	1.250
22	1.375
24	1.500

ADDITIONAL ENTRY SIZES CAN BE FOUND IN SECTION C

**TABLE 1 - All Dimensions in Inches**

Shell Size	A Thread Type	B Max	C Wrench Flats	J REF	K REF
09	M12 X 1.0	0.780	0.625	.552	.962
11	M15 X 1.0	0.910	0.750	.615	1.022
13	M18 X 1.0	1.030	0.875	.677	1.086
15	M22 X 1.0	1.160	1.000	.740	1.148
17	M25 X 1.0	1.280	1.125	.802	1.211
19	M28 X 1.0	1.410	1.250	.865	1.272
21	M31 X 1.0	1.530	1.375	.927	1.336
23	M34 X 1.0	1.660	1.500	.990	1.398
25	M37 X 1.0	1.780	1.625	1.052	1.461

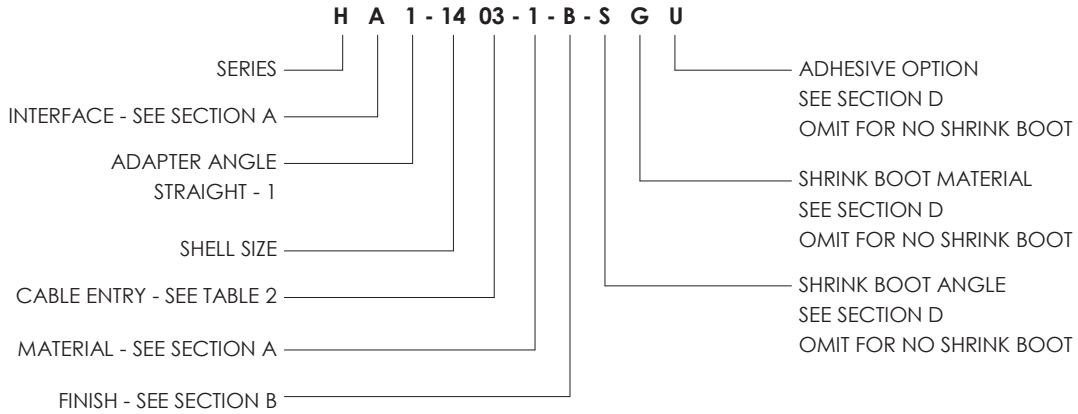
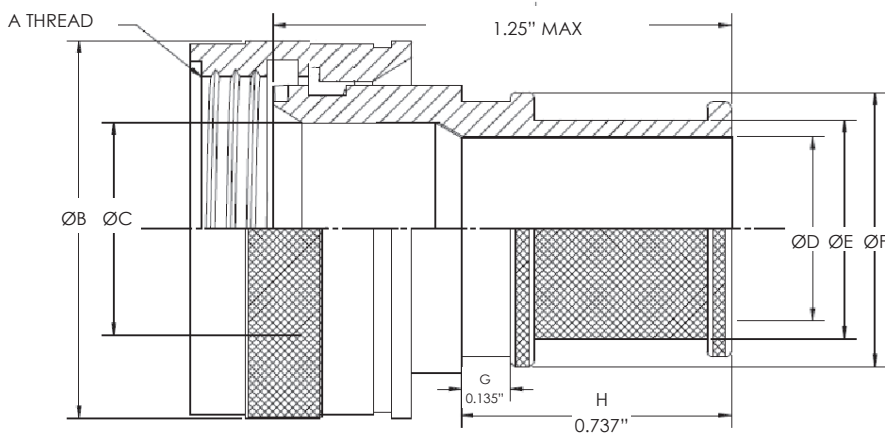
**HellermannTyton**

**DISCLAIMER**

ALL INFORMATION IN THIS SPECIFICATION, INCLUDING ILLUSTRATIONS, IS BELIEVED TO BE RELIABLE. READERS, HOWEVER, SHOULD INDEPENDENTLY EVALUATE THE SUITABILITY OF EACH PRODUCT FOR THEIR APPLICATION. HELLERMANN TYTON MAKES NO WARRANTIES AS TO THE ACCURACY OR COMPLETENESS OF THE INFORMATION, AND DISCLAIMS ANY LIABILITY REGARDING ITS USE. SPECIFICATIONS ARE SUBJECT TO CHANGE WITHOUT NOTICE. IN ADDITION, HELLERMANN TYTON RESERVES THE RIGHT TO MAKE CHANGES—WITHOUT NOTIFICATION TO CUSTOMERS—TO PROCESSING OR MATERIALS THAT DO NOT AFFECT COMPLIANCE WITH ANY APPLICABLE SPECIFICATION.

Cage Code K0720

# H SERIES - STRAIGHT SHRINK BOOT ADAPTER, ROTATABLE COUPLING



FOR 'A' THREAD,  
'B' DIAMETER &  
'C' DIAMETER  
SEE SECTION A

**TABLE 2 - All Dimensions in Inches**

Cable Entry	D REF	E REF	F REF
02	0.125	0.221	0.372
04	0.25	0.346	0.500
06	0.375	0.471	0.625
08	0.500	0.596	0.750
10	0.625	0.721	0.875
12	0.750	0.846	1.000
14	0.875	0.971	1.125
16	1.000	1.096	1.250
18	1.125	1.221	1.375
20	1.250	1.346	1.500
22	1.375	1.471	1.625
24	1.500	1.596	1.750
26	1.625	1.721	1.872

ADDITIONAL ENTRY SIZES CAN BE FOUND IN SECTION C

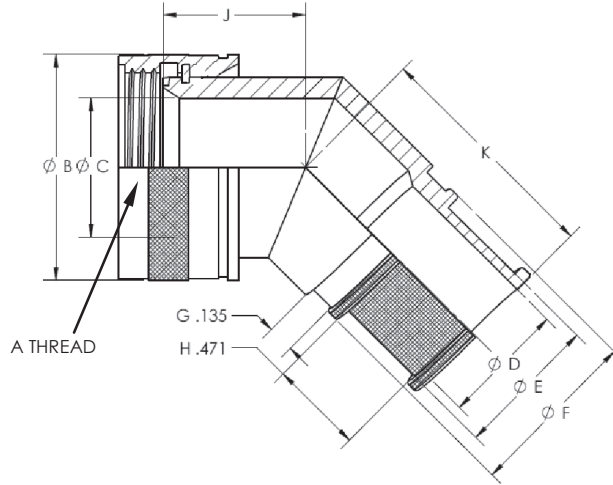
ZETALOK™ CONSTANT FORCE SPRING INCLUDED WITH ITEM



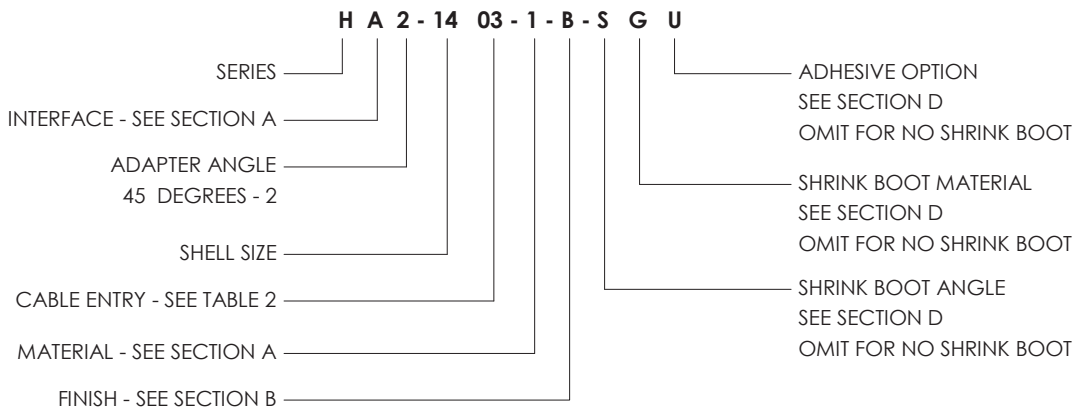
**DISCLAIMER**  
ALL INFORMATION IN THIS SPECIFICATION, INCLUDING ILLUSTRATIONS, IS BELIEVED TO BE RELIABLE. READERS, HOWEVER, SHOULD INDEPENDENTLY EVALUATE THE SUITABILITY OF EACH PRODUCT FOR THEIR APPLICATION. HELLERMANN TYTON MAKES NO WARRANTIES AS TO THE ACCURACY OR COMPLETENESS OF THE INFORMATION, AND DISCLAIMS ANY LIABILITY REGARDING ITS USE. SPECIFICATIONS ARE SUBJECT TO CHANGE WITHOUT NOTICE. IN ADDITION, HELLERMANN TYTON RESERVES THE RIGHT TO MAKE CHANGES—WITHOUT NOTIFICATION TO CUSTOMERS—TO PROCESSING OR MATERIALS THAT DO NOT AFFECT COMPLIANCE WITH ANY APPLICABLE SPECIFICATION.

**Cage Code K0720**

# H SERIES - 45 DEGREE SHRINK BOOT ADAPTER, ROTATABLE COUPLING



FOR 'A' THREAD,  
'B' DIAMETER &  
'C' DIAMETER  
SEE SECTION A



**TABLE 2 - All Dimensions in Inches**

Cable Entry	D REF	E REF	F REF
02	0.125	0.221	0.372
04	0.25	0.346	0.500
06	0.375	0.471	0.625
08	0.500	0.596	0.750
10	0.625	0.721	0.875
12	0.750	0.846	1.000
14	0.875	0.971	1.125
16	1.000	1.096	1.250
18	1.125	1.221	1.375
20	1.250	1.346	1.500
22	1.375	1.471	1.625
24	1.500	1.596	1.750
26	1.625	1.721	1.872

**ADDITIONAL ENTRY SIZES CAN BE FOUND IN SECTION C**

**TABLE 1 - All Dimensions in Inches**

Shell Size	J REF	K REF
8, 9	0.612	1.092
10, 11	0.675	1.119
12, 13	0.698	1.143
14, 15	0.723	1.169
16, 17	0.748	1.195
18, 19	0.767	1.215
20, 21	0.793	1.241
22, 23	0.818	1.266
24, 25	0.844	1.292

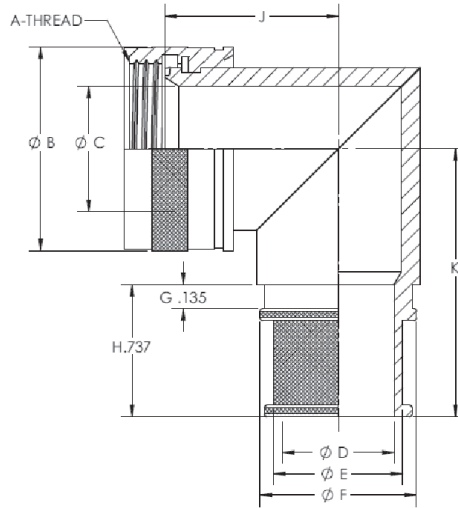
ZETALOK™ CONSTANT FORCE SPRING INCLUDED WITH ITEM



**DISCLAIMER**  
ALL INFORMATION IN THIS SPECIFICATION, INCLUDING ILLUSTRATIONS, IS BELIEVED TO BE RELIABLE. READERS, HOWEVER, SHOULD INDEPENDENTLY EVALUATE THE SUITABILITY OF EACH PRODUCT FOR THEIR APPLICATION. HELLERMANN TYTON MAKES NO WARRANTIES AS TO THE ACCURACY OR COMPLETENESS OF THE INFORMATION, AND DISCLAIMS ANY LIABILITY REGARDING ITS USE. SPECIFICATIONS ARE SUBJECT TO CHANGE WITHOUT NOTICE. IN ADDITION, HELLERMANN TYTON RESERVES THE RIGHT TO MAKE CHANGES—WITHOUT NOTIFICATION TO CUSTOMERS—TO PROCESSING OR MATERIALS THAT DO NOT AFFECT COMPLIANCE WITH ANY APPLICABLE SPECIFICATION.

Cage Code K0720

# H SERIES - 90 DEGREE SHRINK BOOT ADAPTER, ROTATABLE COUPLING



FOR 'A' THREAD,  
'B' DIAMETER &  
'C' DIAMETER  
SEE SECTION A

**H A 3 - 14 03 - 1 - B - S G U**

- SERIES
- INTERFACE - SEE SECTION A
- ADAPTER ANGLE  
90 DEGREES - 3
- SHELL SIZE
- CABLE ENTRY - SEE TABLE 2
- MATERIAL - SEE SECTION A
- FINISH - SEE SECTION B
- ADHESIVE OPTION  
SEE SECTION D  
OMIT FOR NO SHRINK BOOT
- SHRINK BOOT MATERIAL  
SEE SECTION D  
OMIT FOR NO SHRINK BOOT
- SHRINK BOOT ANGLE  
SEE SECTION D  
OMIT FOR NO SHRINK BOOT

**TABLE 1 - All Dimensions in Inches**

Shell Size	J REF	K REF
8, 9	.727	1.275
10, 11	.831	1.340
12, 13	.886	1.403
14, 15	.946	1.465
16, 17	1.008	1.521
18, 19	1.052	1.592
20, 21	1.115	1.648
22, 23	1.177	1.701
24, 25	1.240	1.766

**TABLE 2 - All Dimensions in Inches**

Cable Entry	D REF	E REF	F REF
02	0.125	0.221	0.372
04	0.25	0.346	0.500
06	0.375	0.471	0.625
08	0.500	0.596	0.750
10	0.625	0.721	0.875
12	0.750	0.846	1.000
14	0.875	0.971	1.125
16	1.000	1.096	1.250
18	1.125	1.221	1.375
20	1.250	1.346	1.500
22	1.375	1.471	1.625
24	1.500	1.596	1.750
26	1.625	1.721	1.872

**ADDITIONAL ENTRY SIZES CAN BE FOUND IN SECTION C**

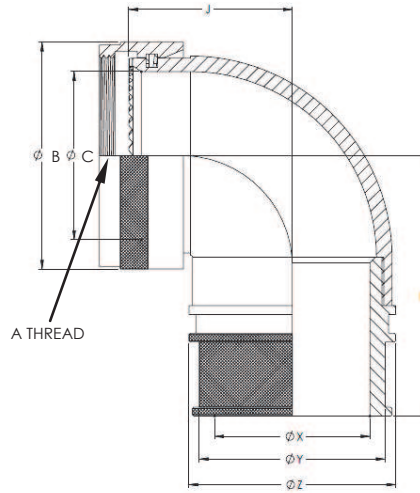
ZETALOK™ CONSTANT FORCE SPRING INCLUDED WITH ITEM



**DISCLAIMER**  
ALL INFORMATION IN THIS SPECIFICATION, INCLUDING ILLUSTRATIONS, IS BELIEVED TO BE RELIABLE. READERS, HOWEVER, SHOULD INDEPENDENTLY EVALUATE THE SUITABILITY OF EACH PRODUCT FOR THEIR APPLICATION. HELLERMANN TYTON MAKES NO WARRANTIES AS TO THE ACCURACY OR COMPLETENESS OF THE INFORMATION, AND DISCLAIMS ANY LIABILITY REGARDING ITS USE. SPECIFICATIONS ARE SUBJECT TO CHANGE WITHOUT NOTICE. IN ADDITION, HELLERMANN TYTON RESERVES THE RIGHT TO MAKE CHANGES—WITHOUT NOTIFICATION TO CUSTOMERS—TO PROCESSING OR MATERIALS THAT DO NOT AFFECT COMPLIANCE WITH ANY APPLICABLE SPECIFICATION.

Cage Code K0720

# H SERIES - 90 DEGREE LOW PROFILE SHRINK BOOT ADAPTER



FOR 'A' THREAD,  
'B' DIAMETER &  
'C' DIAMETER  
SEE SECTION A

**H A X - 14 03 - 1 - B - S G U**

- SERIES — H
- INTERFACE - SEE SECTION A — A
- ADAPTER ANGLE — 14
- 90 DEGREE LOW PROFILE - X — X
- SHELL SIZE — 03
- CABLE ENTRY - SEE TABLE 2 — 1
- MATERIAL - SEE SECTION A — B
- FINISH - SEE SECTION B — S
- ADHESIVE OPTION — G
- SEE SECTION D — U
- OMIT FOR NO SHRINK BOOT —
- SHRINK BOOT MATERIAL —
- SEE SECTION D —
- OMIT FOR NO SHRINK BOOT —
- SHRINK BOOT ANGLE —
- SEE SECTION D —
- OMIT FOR NO SHRINK BOOT —

**TABLE 2 - All Dimensions in Inches**

Cable Entry	X REF	Y REF	Z REF
02	0.125	0.221	0.372
04	0.25	0.346	0.500
06	0.375	0.471	0.625
08	0.500	0.596	0.750
10	0.625	0.721	0.875
12	0.750	0.846	1.000
14	0.875	0.971	1.125
16	1.000	1.096	1.250
18	1.125	1.221	1.375
20	1.250	1.346	1.500
22	1.375	1.471	1.625
24	1.500	1.596	1.750
26	1.625	1.721	1.872

**ADDITIONAL ENTRY SIZES CAN BE FOUND IN SECTION C**

**TABLE 1 - All Dimensions in Inches**

Shell Size	J REF	K REF
8, 9	.660	1.298
10, 11	.725	1.374
12, 13	.800	1.508
14, 15	.845	1.469
16, 17	.900	1.630
18, 19	.965	1.729
20, 21	1.00	1.849
22, 23	1.10	1.923
24, 25	1.12	2.041

ZETALOK™ CONSTANT FORCE SPRING INCLUDED WITH ITEM

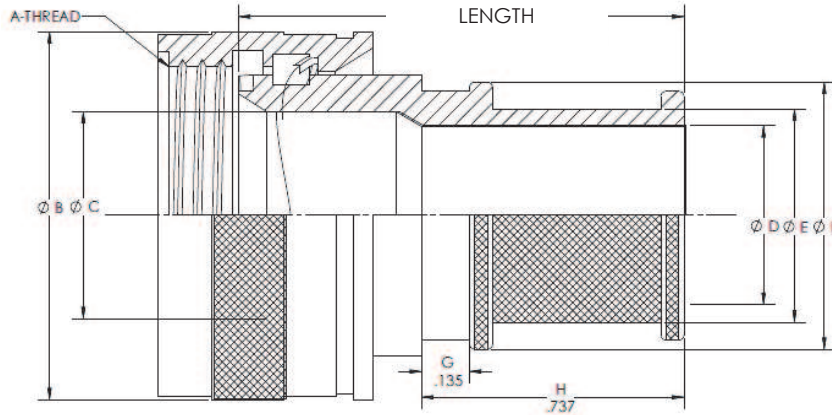


**DISCLAIMER**

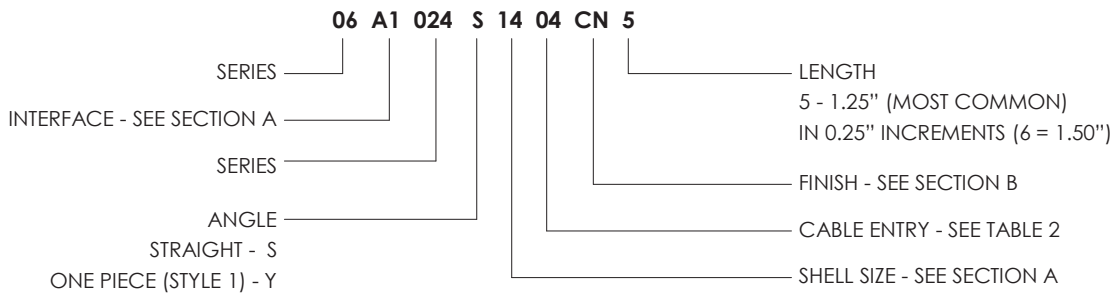
ALL INFORMATION IN THIS SPECIFICATION, INCLUDING ILLUSTRATIONS, IS BELIEVED TO BE RELIABLE. READERS, HOWEVER, SHOULD INDEPENDENTLY EVALUATE THE SUITABILITY OF EACH PRODUCT FOR THEIR APPLICATION. HELLERMANN TYTON MAKES NO WARRANTIES AS TO THE ACCURACY OR COMPLETENESS OF THE INFORMATION, AND DISCLAIMS ANY LIABILITY REGARDING ITS USE. SPECIFICATIONS ARE SUBJECT TO CHANGE WITHOUT NOTICE. IN ADDITION, HELLERMANN TYTON RESERVES THE RIGHT TO MAKE CHANGES—WITHOUT NOTIFICATION TO CUSTOMERS—TO PROCESSING OR MATERIALS THAT DO NOT AFFECT COMPLIANCE WITH ANY APPLICABLE SPECIFICATION.

**Cage Code K0720**

**06xx024S - STRAIGHT SHRINK BOOT ADAPTER, NON-DETENT SELF LOCKING**  
**06xx024Y - ONE PIECE SHRINK BOOT ADAPTER, NON-DETENT SELF LOCKING**



**STYLE Y SPECIFICATION:** WHEN THE DESIRED ADAPTER'S 'C' DIAMETER IS SMALLER THAN THE 'D' DIAMETER A STYLE 2 (TWO PIECE) COUPLING RING ADAPTER IS USUALLY SUPPLIED. CHANGING THE 'S' CALLOUT TO 'Y' INDICATES THAT A ONE PIECE (STYLE 1) SHOULD BE SUPPLIED INSTEAD.



FOR 'A' THREAD,  
 'B' DIAMETER &  
 'C' DIAMETER  
 SEE SECTION A

**TABLE 2 - All Dimensions in Inches**

Cable Entry	D REF	E REF	F REF
02	0.125	0.221	0.372
04	0.25	0.346	0.500
06	0.375	0.471	0.625
08	0.500	0.596	0.750
10	0.625	0.721	0.875
12	0.750	0.846	1.000
14	0.875	0.971	1.125
16	1.000	1.096	1.250
18	1.125	1.221	1.375
20	1.250	1.346	1.500
22	1.375	1.471	1.625
24	1.500	1.596	1.750
26	1.625	1.721	1.872

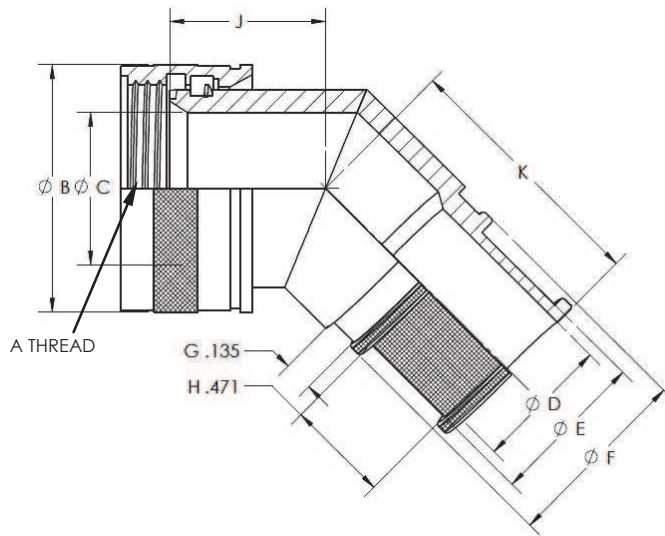
**ADDITIONAL ENTRY SIZES CAN BE FOUND IN SECTION C**

ZETALOK™ CONSTANT FORCE SPRING INCLUDED WITH ITEM

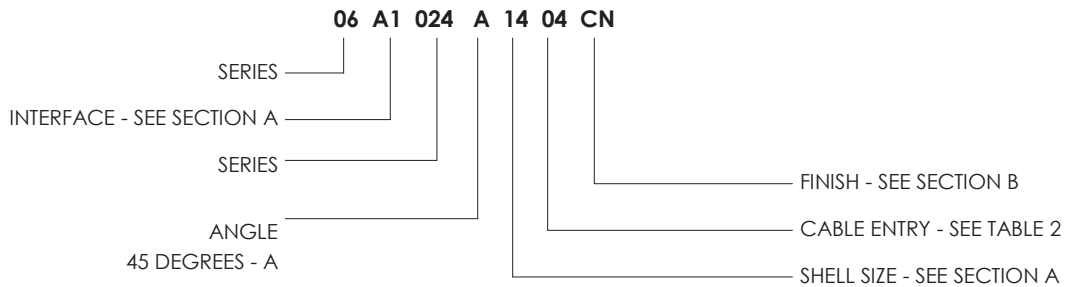


**DISCLAIMER**  
 ALL INFORMATION IN THIS SPECIFICATION, INCLUDING ILLUSTRATIONS, IS BELIEVED TO BE RELIABLE. READERS, HOWEVER, SHOULD INDEPENDENTLY EVALUATE THE SUITABILITY OF EACH PRODUCT FOR THEIR APPLICATION. HELLERMANN TYTON MAKES NO WARRANTIES AS TO THE ACCURACY OR COMPLETENESS OF THE INFORMATION, AND DISCLAIMS ANY LIABILITY REGARDING ITS USE. SPECIFICATIONS ARE SUBJECT TO CHANGE WITHOUT NOTICE. IN ADDITION, HELLERMANN TYTON RESERVES THE RIGHT TO MAKE CHANGES—WITHOUT NOTIFICATION TO CUSTOMERS—TO PROCESSING OR MATERIALS THAT DO NOT AFFECT COMPLIANCE WITH ANY APPLICABLE SPECIFICATION.

# 06xx024A - 45 DEGREE SHRINK BOOT ADAPTER, NON-DETENT SELF LOCKING



FOR 'A' THREAD,  
'B' DIAMETER &  
'C' DIAMETER  
SEE SECTION A



**TABLE 2 - All Dimensions in Inches**

Cable Entry	D REF	E REF	F REF
02	0.125	0.221	0.372
04	0.25	0.346	0.500
06	0.375	0.471	0.625
08	0.500	0.596	0.750
10	0.625	0.721	0.875
12	0.750	0.846	1.000
14	0.875	0.971	1.125
16	1.000	1.096	1.250
18	1.125	1.221	1.375
20	1.250	1.346	1.500
22	1.375	1.471	1.625
24	1.500	1.596	1.750
26	1.625	1.721	1.872

**ADDITIONAL ENTRY SIZES CAN BE FOUND IN SECTION C**

**TABLE 1 - All Dimensions in Inches**

Shell Size	J REF	K REF
8, 9	0.612	1.092
10, 11	0.675	1.119
12, 13	0.698	1.143
14, 15	0.723	1.169
16, 17	0.748	1.195
18, 19	0.767	1.215
20, 21	0.793	1.241
22, 23	0.818	1.266
24, 25	0.844	1.292

ZETALOK™ CONSTANT FORCE SPRING INCLUDED WITH ITEM

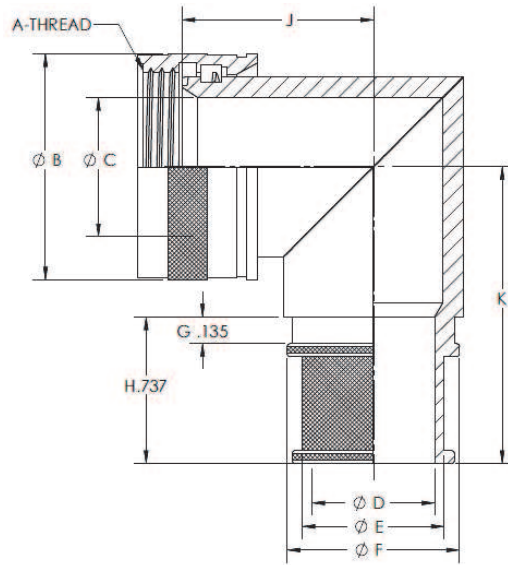


**DISCLAIMER**

ALL INFORMATION IN THIS SPECIFICATION, INCLUDING ILLUSTRATIONS, IS BELIEVED TO BE RELIABLE. READERS, HOWEVER, SHOULD INDEPENDENTLY EVALUATE THE SUITABILITY OF EACH PRODUCT FOR THEIR APPLICATION. HELLERMANN TYTON MAKES NO WARRANTIES AS TO THE ACCURACY OR COMPLETENESS OF THE INFORMATION, AND DISCLAIMS ANY LIABILITY REGARDING ITS USE. SPECIFICATIONS ARE SUBJECT TO CHANGE WITHOUT NOTICE. IN ADDITION, HELLERMANN TYTON RESERVES THE RIGHT TO MAKE CHANGES—WITHOUT NOTIFICATION TO CUSTOMERS—TO PROCESSING OR MATERIALS THAT DO NOT AFFECT COMPLIANCE WITH ANY APPLICABLE SPECIFICATION.

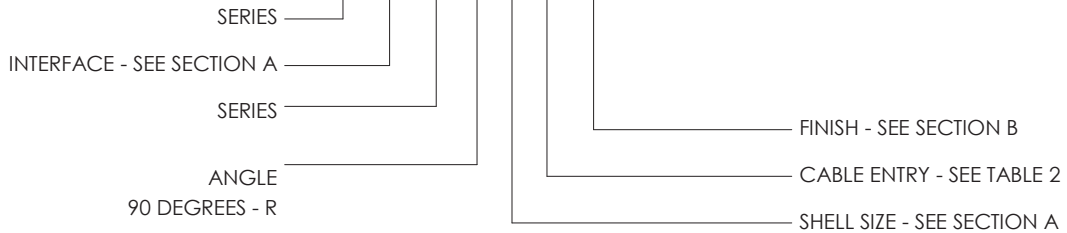
**Cage Code K0720**

# 06xx024R - 90 DEGREE SHRINK BOOT ADAPTER, NON-DETENT SELF LOCKING



FOR 'A' THREAD,  
'B' DIAMETER &  
'C' DIAMETER  
SEE SECTION A

06 A1 024 R 14 04 CN



**TABLE 1 - All Dimensions in Inches**

Shell Size	J REF	K REF
8, 9	.727	1.275
10, 11	.831	1.340
12, 13	.886	1.403
14, 15	.946	1.465
16, 17	1.008	1.521
18, 19	1.052	1.592
20, 21	1.115	1.648
22, 23	1.177	1.701
24, 25	1.240	1.766

**TABLE 2 - All Dimensions in Inches**

Cable Entry	D REF	E REF	F REF
02	0.125	0.221	0.372
04	0.25	0.346	0.500
06	0.375	0.471	0.625
08	0.500	0.596	0.750
10	0.625	0.721	0.875
12	0.750	0.846	1.000
14	0.875	0.971	1.125
16	1.000	1.096	1.250
18	1.125	1.221	1.375
20	1.250	1.346	1.500
22	1.375	1.471	1.625
24	1.500	1.596	1.750
26	1.625	1.721	1.872

**ADDITIONAL ENTRY SIZES CAN BE FOUND IN SECTION C**

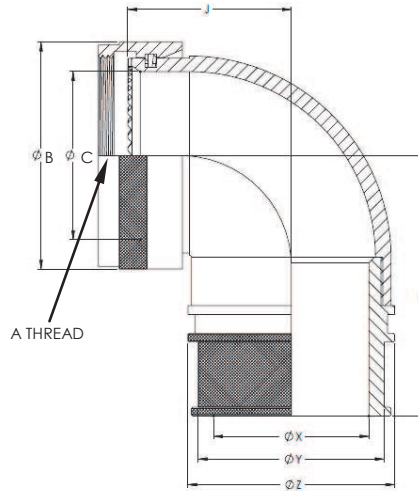
ZETALOK™ CONSTANT FORCE SPRING INCLUDED WITH ITEM



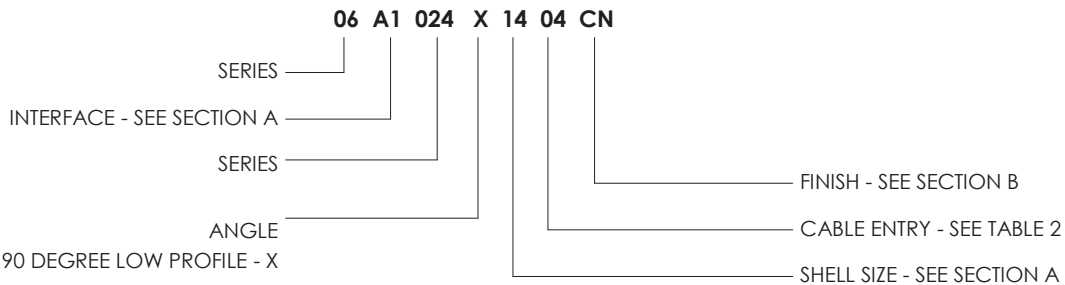
**DISCLAIMER**  
ALL INFORMATION IN THIS SPECIFICATION, INCLUDING ILLUSTRATIONS, IS BELIEVED TO BE RELIABLE. READERS, HOWEVER, SHOULD INDEPENDENTLY EVALUATE THE SUITABILITY OF EACH PRODUCT FOR THEIR APPLICATION. HELLERMANN TYTON MAKES NO WARRANTIES AS TO THE ACCURACY OR COMPLETENESS OF THE INFORMATION, AND DISCLAIMS ANY LIABILITY REGARDING ITS USE. SPECIFICATIONS ARE SUBJECT TO CHANGE WITHOUT NOTICE. IN ADDITION, HELLERMANN TYTON RESERVES THE RIGHT TO MAKE CHANGES—WITHOUT NOTIFICATION TO CUSTOMERS—TO PROCESSING OR MATERIALS THAT DO NOT AFFECT COMPLIANCE WITH ANY APPLICABLE SPECIFICATION.

Cage Code K0720

# 06xx024X - 90 DEGREE LOW PROFILE SHRINK BOOT ADAPTER



FOR 'A' THREAD,  
'B' DIAMETER &  
'C' DIAMETER  
SEE SECTION A



**TABLE 2 - All Dimensions in Inches**

Cable Entry	X REF	Y REF	Z REF
02	0.125	0.221	0.372
04	0.25	0.346	0.500
06	0.375	0.471	0.625
08	0.500	0.596	0.750
10	0.625	0.721	0.875
12	0.750	0.846	1.000
14	0.875	0.971	1.125
16	1.000	1.096	1.250
18	1.125	1.221	1.375
20	1.250	1.346	1.500
22	1.375	1.471	1.625
24	1.500	1.596	1.750
26	1.625	1.721	1.872

**ADDITIONAL ENTRY SIZES CAN BE FOUND IN SECTION C**

**TABLE 1 - All Dimensions in Inches**

Shell Size	J REF	K REF
8, 9	.660	1.298
10, 11	.725	1.374
12, 13	.800	1.508
14, 15	.845	1.469
16, 17	.900	1.630
18, 19	.965	1.729
20, 21	1.00	1.849
22, 23	1.10	1.923
24, 25	1.12	2.041

ZETALOK™ CONSTANT FORCE SPRING INCLUDED WITH ITEM



**DISCLAIMER**  
ALL INFORMATION IN THIS SPECIFICATION, INCLUDING ILLUSTRATIONS, IS BELIEVED TO BE RELIABLE. READERS, HOWEVER, SHOULD INDEPENDENTLY EVALUATE THE SUITABILITY OF EACH PRODUCT FOR THEIR APPLICATION. HELLERMANN TYTON MAKES NO WARRANTIES AS TO THE ACCURACY OR COMPLETENESS OF THE INFORMATION, AND DISCLAIMS ANY LIABILITY REGARDING ITS USE. SPECIFICATIONS ARE SUBJECT TO CHANGE WITHOUT NOTICE. IN ADDITION, HELLERMANN TYTON RESERVES THE RIGHT TO MAKE CHANGES—WITHOUT NOTIFICATION TO CUSTOMERS—TO PROCESSING OR MATERIALS THAT DO NOT AFFECT COMPLIANCE WITH ANY APPLICABLE SPECIFICATION.

Cage Code K0720

## SECTION E

### HTMR - MEMORY RINGS FOR EMI/RFI APPLICATIONS

HellermannTyton memory rings terminate the overall shield to the adapter. The memory ring is a low-profile, high-strength, shape memory alloy shield termination device available in many sizes to accommodate various entry sizes and shield configurations. Memory ring adapters are ideal for lightweight aerospace applications requiring repeated high-to-low temperature cycles.



**A** = Ring accommodates a single 36 AWG braid per QQB-575.

**B** = Ring accommodates a single 36 AWG braid or double 36 AWG braids per QQB-575

MEMORY RING SPECIFICATIONS						
HTMR PART NUMBER	USED WITH CABLE ENTRY SIZE	ADAPTER 'G' DIA	PART NUMBER (TYPE A)		PART NUMBER (TYPE B)	
			END HTMR PART NUMBER WITH A	RECOVERED	END HTMR PART NUMBER WITH B	RECOVERED
HTMR-xxA HTMR-xxB			AS SUPPLIED	RECOVERED	AS SUPPLIED	RECOVERED
HTMR-04	04	0.373	.397	.379	.416	.398
HTMR-05	05	0.435	.460	.440	.479	.458
HTMR-06	06	0.498	.523	.499	.548	.523
HTMR-07	07	0.560	.586	.559	.606	.578
HTMR-08	08	0.623	.650	.620	.670	.639
HTMR-10	10	0.747	.782	.744	.802	.763
HTMR-12	12	0.872	.912	.867	.931	.886
HTMR-14	14	0.997	1.040	.988	1.060	1.007
HTMR-16	16	1.122	1.171	1.111	1.191	1.129
HTMR-18	18	1.247	1.301	1.234	1.320	1.252
HTMR-20	20	1.372	1.430	1.357	1.450	1.376
HTMR-22	22	1.495	1.543	1.463	1.561	1.481
HTMR-24	24	1.620	1.673	1.587	1.691	1.605

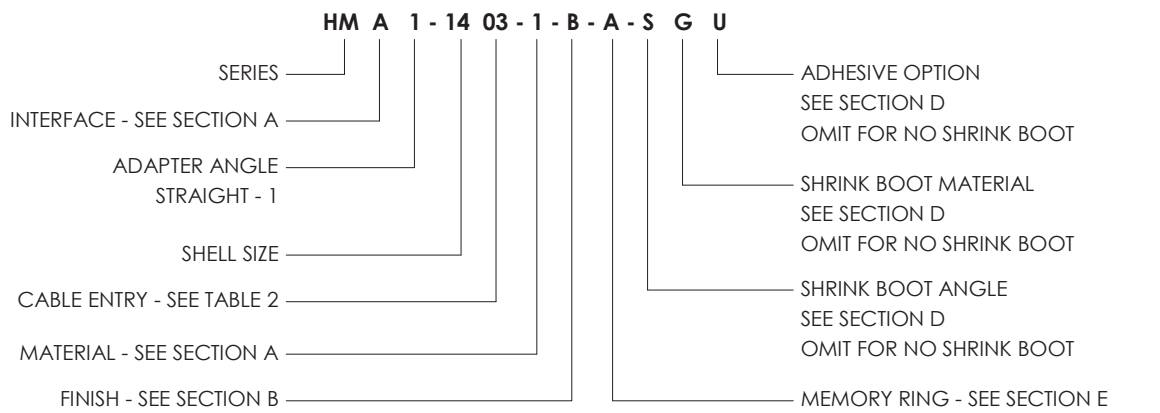
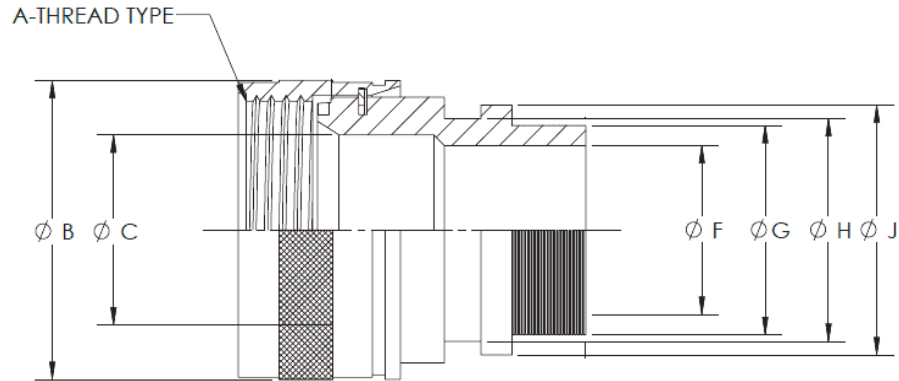
# HellermannTyton

**DISCLAIMER**

ALL INFORMATION IN THIS SPECIFICATION, INCLUDING ILLUSTRATIONS, IS BELIEVED TO BE RELIABLE. READERS, HOWEVER, SHOULD INDEPENDENTLY EVALUATE THE SUITABILITY OF EACH PRODUCT FOR THEIR APPLICATION. HELLERMANN TYTON MAKES NO WARRANTIES AS TO THE ACCURACY OR COMPLETENESS OF THE INFORMATION, AND DISCLAIMS ANY LIABILITY REGARDING ITS USE. SPECIFICATIONS ARE SUBJECT TO CHANGE WITHOUT NOTICE. IN ADDITION, HELLERMANN TYTON RESERVES THE RIGHT TO MAKE CHANGES—WITHOUT NOTIFICATION TO CUSTOMERS—TO PROCESSING OR MATERIALS THAT DO NOT AFFECT COMPLIANCE WITH ANY APPLICABLE SPECIFICATION.

**Cage Code K0720**

# HM SERIES - STRAIGHT MEMORY RING ADAPTER



**TABLE 2 - All Dimensions in Inches**

Cable Entry	F REF	G REF	H REF	J REF
04	0.250	0.373	0.450	0.550
05	0.312	0.435	0.512	0.612
06	0.375	0.498	0.575	0.675
07	0.438	0.560	.638	.738
08	0.500	0.623	.700	.800
10	0.625	0.747	.825	.925
12	0.750	0.872	.950	1.050
14	0.875	0.997	1.075	1.175
16	1.000	1.122	1.200	1.300
18	1.125	1.247	1.325	1.425
20	1.250	1.372	1.450	1.550
22	1.375	1.495	1.575	1.675
24	1.500	1.620	1.700	1.800

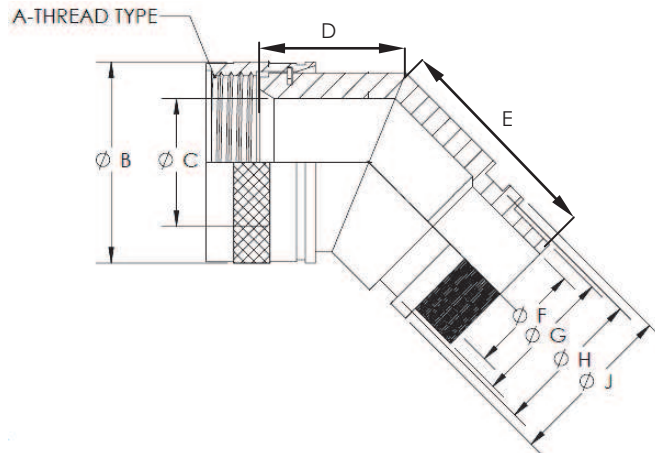
FOR 'A' THREAD,  
'B' DIAMETER &  
'C' DIAMETER  
SEE SECTION A



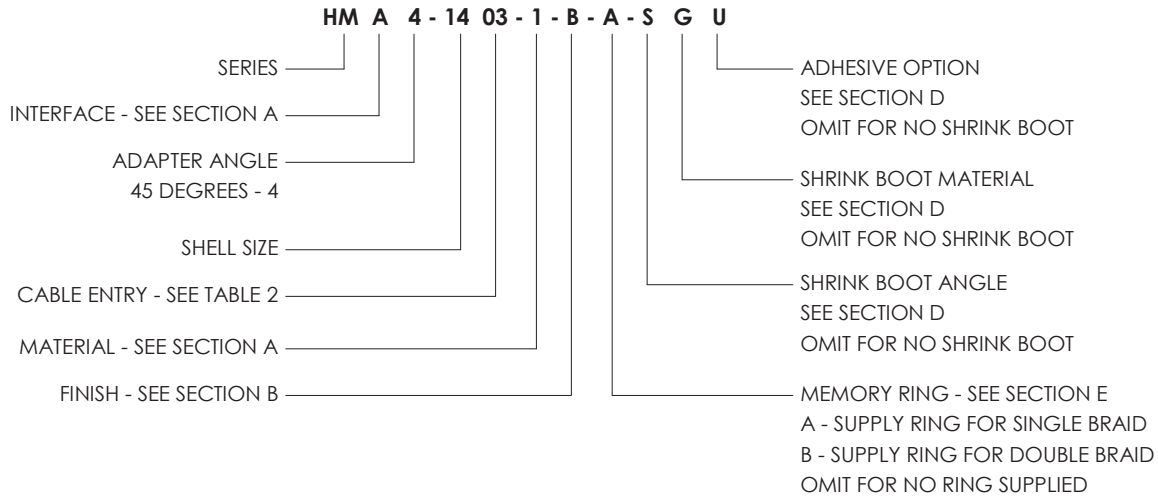
**DISCLAIMER**  
ALL INFORMATION IN THIS SPECIFICATION, INCLUDING ILLUSTRATIONS, IS BELIEVED TO BE RELIABLE. READERS, HOWEVER, SHOULD INDEPENDENTLY EVALUATE THE SUITABILITY OF EACH PRODUCT FOR THEIR APPLICATION. HELLERMANN TYTON MAKES NO WARRANTIES AS TO THE ACCURACY OR COMPLETENESS OF THE INFORMATION, AND DISCLAIMS ANY LIABILITY REGARDING ITS USE. SPECIFICATIONS ARE SUBJECT TO CHANGE WITHOUT NOTICE. IN ADDITION, HELLERMANN TYTON RESERVES THE RIGHT TO MAKE CHANGES—WITHOUT NOTIFICATION TO CUSTOMERS—TO PROCESSING OR MATERIALS THAT DO NOT AFFECT COMPLIANCE WITH ANY APPLICABLE SPECIFICATION.

Cage Code K0720

# HM SERIES - 45 DEGREE MEMORY RING ADAPTER



FOR 'A' THREAD,  
'B' DIAMETER &  
'C' DIAMETER  
SEE SECTION A



**TABLE 1 - All Dimensions in Inches**

Shell Size	D REF	E REF
8, 9	0.612	1.092
10, 11	0.675	1.119
12, 13	0.698	1.143
14, 15	0.723	1.169
16, 17	0.748	1.195
18, 19	0.767	1.215
20, 21	0.793	1.241
22, 23	0.818	1.266
24, 25	0.844	1.292

**TABLE 2 - All Dimensions in Inches**

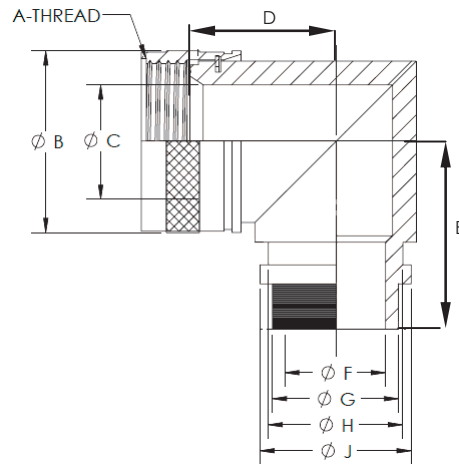
Cable Entry	F REF	G REF	H REF	J REF
04	0.250	0.373	0.450	0.550
05	0.312	0.435	0.512	0.612
06	0.375	0.498	0.575	0.675
07	0.438	0.560	.638	.738
08	0.500	0.623	.700	.800
10	0.625	0.747	.825	.925
12	0.750	0.872	.950	1.050
14	0.875	0.997	1.075	1.175
16	1.000	1.122	1.200	1.300
18	1.125	1.247	1.325	1.425
20	1.250	1.372	1.450	1.550
22	1.375	1.495	1.575	1.675
24	1.500	1.620	1.700	1.800



**DISCLAIMER**  
ALL INFORMATION IN THIS SPECIFICATION, INCLUDING ILLUSTRATIONS, IS BELIEVED TO BE RELIABLE. READERS, HOWEVER, SHOULD INDEPENDENTLY EVALUATE THE SUITABILITY OF EACH PRODUCT FOR THEIR APPLICATION. HELLERMANN TYTON MAKES NO WARRANTIES AS TO THE ACCURACY OR COMPLETENESS OF THE INFORMATION, AND DISCLAIMS ANY LIABILITY REGARDING ITS USE. SPECIFICATIONS ARE SUBJECT TO CHANGE WITHOUT NOTICE. IN ADDITION, HELLERMANN TYTON RESERVES THE RIGHT TO MAKE CHANGES—WITHOUT NOTIFICATION TO CUSTOMERS—TO PROCESSING OR MATERIALS THAT DO NOT AFFECT COMPLIANCE WITH ANY APPLICABLE SPECIFICATION.

Cage Code K0720

# HM SERIES - 90 DEGREE MEMORY RING ADAPTER



FOR 'A' THREAD,  
'B' DIAMETER &  
'C' DIAMETER  
SEE SECTION A

**HM A 9 - 14 03 - 1 - B - A - S G U**

- SERIES
- INTERFACE - SEE SECTION A
- ADAPTER ANGLE  
90 DEGREES - 9
- SHELL SIZE
- CABLE ENTRY - SEE TABLE 2
- MATERIAL - SEE SECTION A
- FINISH - SEE SECTION B
- ADHESIVE OPTION  
SEE SECTION D  
OMIT FOR NO SHRINK BOOT
- SHRINK BOOT MATERIAL  
SEE SECTION D  
OMIT FOR NO SHRINK BOOT
- SHRINK BOOT ANGLE  
SEE SECTION D  
OMIT FOR NO SHRINK BOOT
- MEMORY RING - SEE SECTION E  
A - SUPPLY RING FOR SINGLE BRAID  
B - SUPPLY RING FOR DOUBLE BRAID  
OMIT FOR NO RING SUPPLIED

**TABLE 2 - All Dimensions in Inches**

Cable Entry	F REF	G REF	H REF	J REF
04	0.250	0.373	0.450	0.550
05	0.312	0.435	0.512	0.612
06	0.375	0.498	0.575	0.675
07	0.438	0.560	.638	.738
08	0.500	0.623	.700	.800
10	0.625	0.747	.825	.925
12	0.750	0.872	.950	1.050
14	0.875	0.997	1.075	1.175
16	1.000	1.122	1.200	1.300
18	1.125	1.247	1.325	1.425
20	1.250	1.372	1.450	1.550
22	1.375	1.495	1.575	1.675
24	1.500	1.620	1.700	1.800

**TABLE 1 - All Dimensions in Inches**

Shell Size	D REF	E REF
8, 9	.552	.962
10, 11	.615	1.022
12, 13	.677	1.086
14, 15	.740	1.148
16, 17	.802	1.211
18, 19	.865	1.272
20, 21	.927	1.336
22, 23	.990	1.398
24, 25	1.052	1.461

**HellermannTyton**

**DISCLAIMER**

ALL INFORMATION IN THIS SPECIFICATION, INCLUDING ILLUSTRATIONS, IS BELIEVED TO BE RELIABLE. READERS, HOWEVER, SHOULD INDEPENDENTLY EVALUATE THE SUITABILITY OF EACH PRODUCT FOR THEIR APPLICATION. HELLERMANN TYTON MAKES NO WARRANTIES AS TO THE ACCURACY OR COMPLETENESS OF THE INFORMATION, AND DISCLAIMS ANY LIABILITY REGARDING ITS USE. SPECIFICATIONS ARE SUBJECT TO CHANGE WITHOUT NOTICE. IN ADDITION, HELLERMANN TYTON RESERVES THE RIGHT TO MAKE CHANGES—WITHOUT NOTIFICATION TO CUSTOMERS—TO PROCESSING OR MATERIALS THAT DO NOT AFFECT COMPLIANCE WITH ANY APPLICABLE SPECIFICATION.

**Cage Code K0720**



### Contact Information

#### U.K. Office

Mark Dunn  
Assistant Product Manager  
Email: Mark.Dunn@hellermannntyton.co.uk  
Phone: +44 (0)1752 701261

Hellermann Tyton  
Plymouth International Technology Park,  
William Prance Road,  
Plymouth,  
Devon  
PL65WR

#### U.S. Office

Chris Holland  
National Sales Manager - Defense  
Email: cholland@htamericas.com  
Phone: (469) 361-6678

Website: [www.hellermannntyton.us](http://www.hellermannntyton.us)

#### **IMPORTANT NOTICE**

All statements, technical information and recommendations related to the Seller's products are based on information believed to be reliable, but the accuracy or completeness thereof is not guaranteed. Before utilizing the product, the user should determine the suitability of the product for its intended use. The user assumes all risks and liability whatsoever in connection with such use.

Any statement or recommendations of the Seller which are not contained in the Seller's current publications shall have no force or effect unless contained in an agreement signed by an authorized officer or the Seller. The statements contained herein are made in lieu of all warranties, express or implied, including but not limited to the implied warranties of merchantability and fitness for a particular purpose which warranties are hereby expressly disclaimed.

**SELLER SHALL NOT BE LIABLE TO THE USER OR ANY OTHER PERSON UNDER ANY LEGAL THEORY, INCLUDING BUT NOT LIMITED TO NEGLIGENCE OR STRICT LIABILITY, FOR ANY INJURY OR FOR ANY DIRECT OR CONSEQUENTIAL DAMAGES SUSTAINED OR INCURRED BY REASON OF THE USE OF ANY OF THE SELLERS PRODUCTS THAT WERE DEFECTIVE.**