



Carling Technologies®

Innovative Designs. Powerful Solutions.

RENEWABLE ENERGY

CIRCUIT BREAKERS AND DISCONNECTS



INDUSTRY BROCHURE



Carling Technologies®

Innovative Designs. Powerful Solutions.

*When you integrate
Carling Technologies'
fuses and circuit breakers into
your pv system...*

you are guaranteed maximum protection against harmful overcurrent. Our product line is guaranteed to not only protect the power system itself, but it also safeguards the structure where these systems are installed by eliminating the fire hazard that can be caused by overcurrent.



CORPORATE LOCATIONS

Founded in 1920, there are few products that Carling Technologies hasn't turned "ON" and fewer industries that haven't turned to Carling for solutions. With ISO and TS registered manufacturing facilities and technical sales offices worldwide, Carling ranks among the world's largest manufacturers of circuit breakers, switches, PDU's, digital switching systems and electronic controls.



- Worldwide Headquarters, **Plainville, CT, USA**
ISO9001:2015, IATF16949:2016
- Carling Technologies Inc., **Brownsville, TX, USA**
ISO14001:2015, ISO9001:2015, IATF16949:2016
- Interruptores de Mexico, **Matehuala, SLP, Mexico**
ISO14001:2015, ISO9001:2015, IATF16949:2016
- Carling Technologies Ltd., **Exeter, Devon, England**
ISO9001:2015, IATF 16949:2016
- Carling Technologies Asia-Pacific Ltd., **Tsimshatsui, Kowloon, Hong Kong**
ISO9001:2015, IATF16949:2016
- Carlingswitch Manufacturing Co., Ltd., **Zhongshan City, Guangdong, China**
ISO14001:2015, ISO9001:2015, IATF16949:2016



FEATURED PRODUCTS

CX-Series

Features an innovative configuration that allows the breaker to safely handle high amperage and high DC voltage applications in a compact package.

- 2-5 Poles
- Ratings: 0.2-115A, up to 600VDC
- 10,000A Max Interrupting Capacity



C-Series

General purpose breakers provide higher amperage and voltage handling capabilities. Ideal for integration in the combiner box.

- 1-6 Poles
- Ratings: 0.02-250A, up to 150VDC, 480VAC
- Rocker, Handle, and Toggle Actuators



CIRCUIT BREAKERS

E-Series

These circuit breakers are ideally suited for high current and high voltage applications.

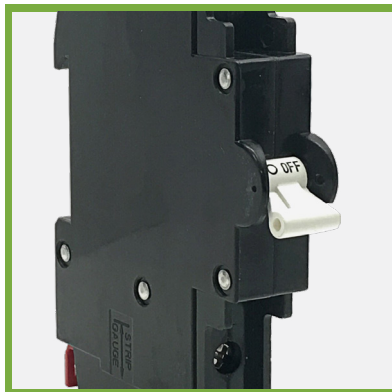
- 1-6 Poles
- Ratings: 0.02-120A, up to 125VDC, 600VAC
- Several Circuit & Switch Only Options Available
- UL, CSA, VDE, UL1500, UL489



G-Series

Ideal for DIN rail mounted applications

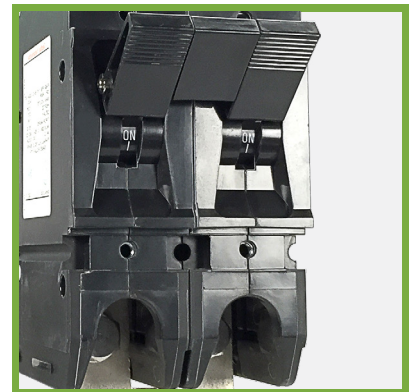
- UL 489: 1-3 poles; 1-50A; 125VDC, 240VAC
- UL 1077: 1-4 poles; 0.1-63A; 80VDC, 240VAC/480VAC
- Integrated Auxiliary Switch
- UL 1077, UL 489, CSA, TUV & CCC Approved



F-Series

The F-Series hydraulic-magnetic circuit breakers are designed to handle high current applications in extremely hot/cold locations.

- 1-3 Poles
- Ratings: 50-700A, up to 125VDC, 277VAC
- UL 489, UL 489A



European Headquarters

Carling Technologies LTD

4 Airport Business Park, Exeter Airport,
Clyst Honiton, Exeter, Devon, EX5 2UL, UK
Phone: Int + 44 1392.364422
Email: ltd.sales@carlingtech.com

Sales Offices:

Germany:
gmbh@carlingtech.com

France:
sas@carlingtech.com

Worldwide Headquarters

Carling Technologies Inc.

60 Johnson Avenue,
Plainville, CT 06062 USA
Phone: 860.793.9281
Email: sales@carlingtech.com

Sales Offices:

Northern Region: nrsm@carlingtech.com
Southeast Region: sersm@carlingtech.com
Midwest Region: mrs@carlingtech.com
West Region: wrsm@carlingtech.com
Latin America: larsm@carlingtech.com

Asia-Pacific Headquarters

Carling Technologies, Asia-Pacific LTD.,

Suite 1607, 16/F Tower 2, The Gateway, Harbour City, 25
Canton Road, Tsimshatsui, Kowloon, Hong Kong
Phone: Int + 852-2737-2277
Email: sales@carlingtech.com.hk

Sales Offices:

Shenzhen, China: shenzhen@carlingtech.com
Shanghai, China: shanghai@carlingtech.com
Pune, India: india@carlingtech.com
Kaohsiung, Taiwan: taiwan@carlingtech.com
Yokohama, Japan: japan@carlingtech.com



WWW.CARLINGTECH.COM