



Carling Technologies®

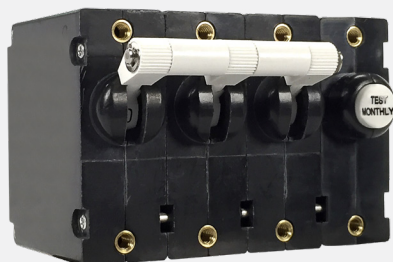
Innovative Designs. Powerful Solutions.

GFCI / ELCI CIRCUIT PROTECTION



SELECTOR GUIDE

SELECTOR GUIDE



PB-Series

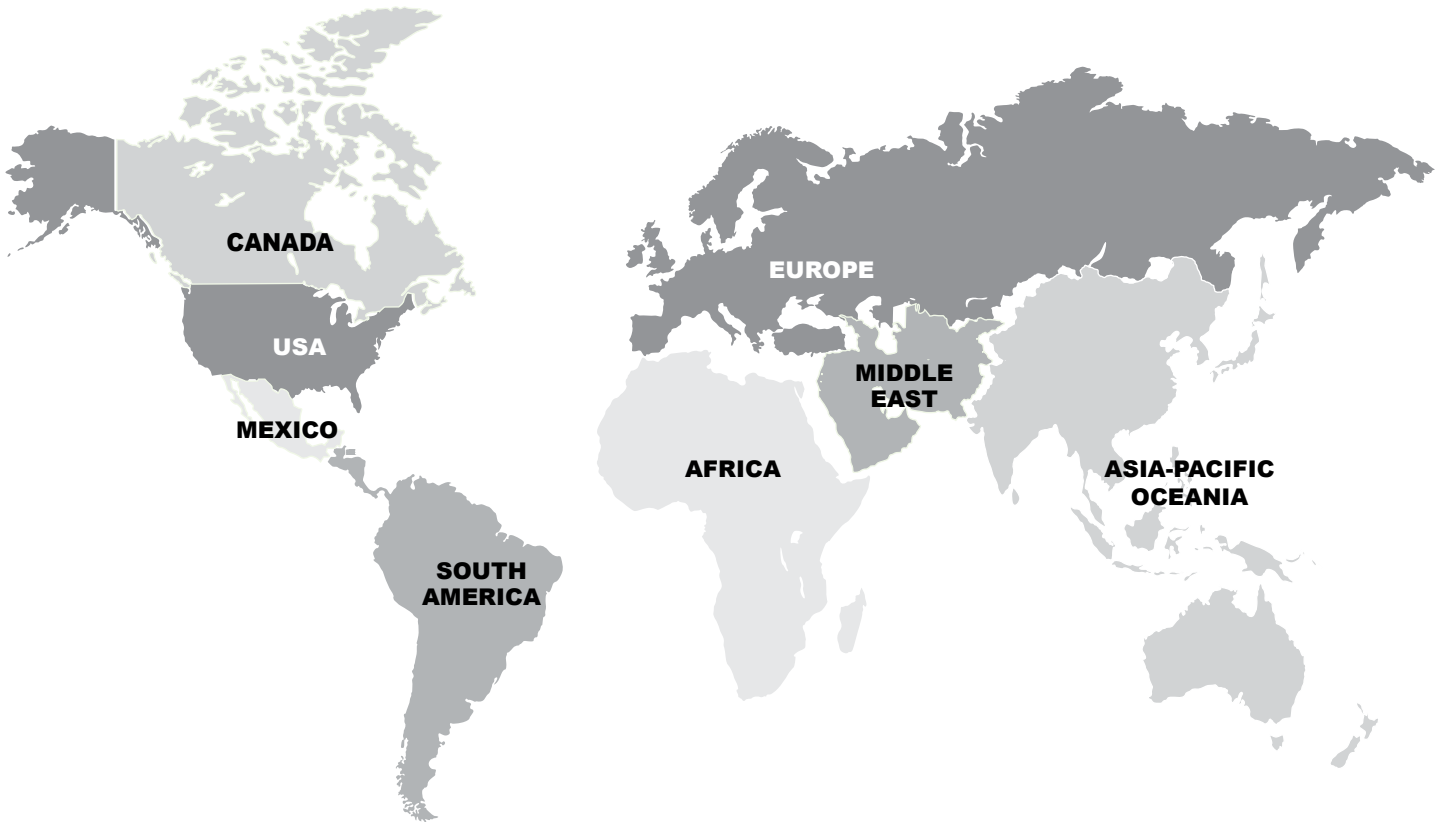


PC-Series

<p>1-3 poles, 3rd pole switched neutral</p>	<p>1-poles (1 circuit breaker + 1 GFCI sensor module), 120V, 2-pole (2 circuit breakers + 1 GFCI sensor module), 120/240V, or 120V with neutral break 2-pole (2 circuit breakers + 1 GFCI sensor module), 240VAC, 3-pole 120/240V with neutral break (sensor module has 2 pole width)</p>	<p>Poles</p>
<p>handle, rocker, flat rocker</p>	<p>handle, rocker, flat rocker, push-to-reset</p>	<p>Actuator Style</p>
<p>30mA & 6mA</p>	<p>30mA & 6mA</p>	<p>Leakage Current Trip Level</p>
<p>For 30mA leakage trip: ≤ 22.2mA, shall not trip 30mA, shall trip within .10 seconds, complying with UL-1053 & ABYC E11. For 6mA leakage trip: ≤25ms</p>	<p>For 30mA leakage trip: ≤ 22.2mA, shall not trip 30mA, shall trip within .10 seconds, complying with UL-1053 & ABYC E11. For 6mA leakage trip: ≤25ms</p>	<p>Leakage Current Trip Time</p>
<p>0.10-30A@120/240VAC</p>	<p>0.10-50A@120/240VAC - 240VAC</p>	<p>Max Current & Voltage Ratings</p>
<p>5,000A</p>	<p>5,000A</p>	<p>Max Interrupting Capacity</p>
<p>series trip</p>	<p>series trip</p>	<p>Available Circuits</p>
<p>.250" tabs, 8-32, 10-32, M4,M5 screw with upturned lugs, 8-32, 10-32, M4,M5 screw, bus type</p>	<p>10-32 threaded stud</p>	<p>Termination</p>
<p>front panel</p>	<p>front panel</p>	<p>Mounting Method</p>
<p>-35° C to +65° C</p>	<p>-35° C to +65° C</p>	<p>Operating Temperature</p>
<p>UL 489, UL 1077, UL 1500</p>	<p>UL 943 & CSA Approved, UL 1053, UL 1500</p>	<p>Agency Approvals</p>

Authorized Sales Representatives and Distributors

To find your local representatives and distributors visit www.carlingtech.com/findarep.



About Carling

Founded in 1920, Carling Technologies is a leading manufacturer of electrical and electronic switches and assemblies, circuit breakers, electronic controls, power distribution units, and multiplexed power distribution systems. With four ISO registered manufacturing facilities and technical sales offices worldwide, Carling Technologies Sales, Service and Engineering teams do much more than manufacture electrical components, they engineer powerful solutions! To learn more about Carling please visit www.carlingtech.com/company-profile.

To view all of Carling's environmental, quality, health & safety certifications please visit www.carlingtech.com/environmental-certifications

European Headquarters

Carling Technologies LTD

4 Airport Business Park, Exeter Airport,
Clyst Honiton, Exeter, Devon, EX5 2UL, UK
Phone: Int + 44 1392.364422
Email: ltd.sales@carlingtech.com

Sales Offices:

Germany:
gmbh@carlingtech.com

France:
sas@carlingtech.com

Worldwide Headquarters

Carling Technologies Inc.

60 Johnson Avenue,
Plainville, CT 06062 USA
Phone: 860.793.9281
Email: sales@carlingtech.com

Sales Offices:

Northern Region: nrsm@carlingtech.com
Southeast Region: sersm@carlingtech.com
Midwest Region: mrsm@carlingtech.com
West Region: wrsm@carlingtech.com
Latin America: larsm@carlingtech.com

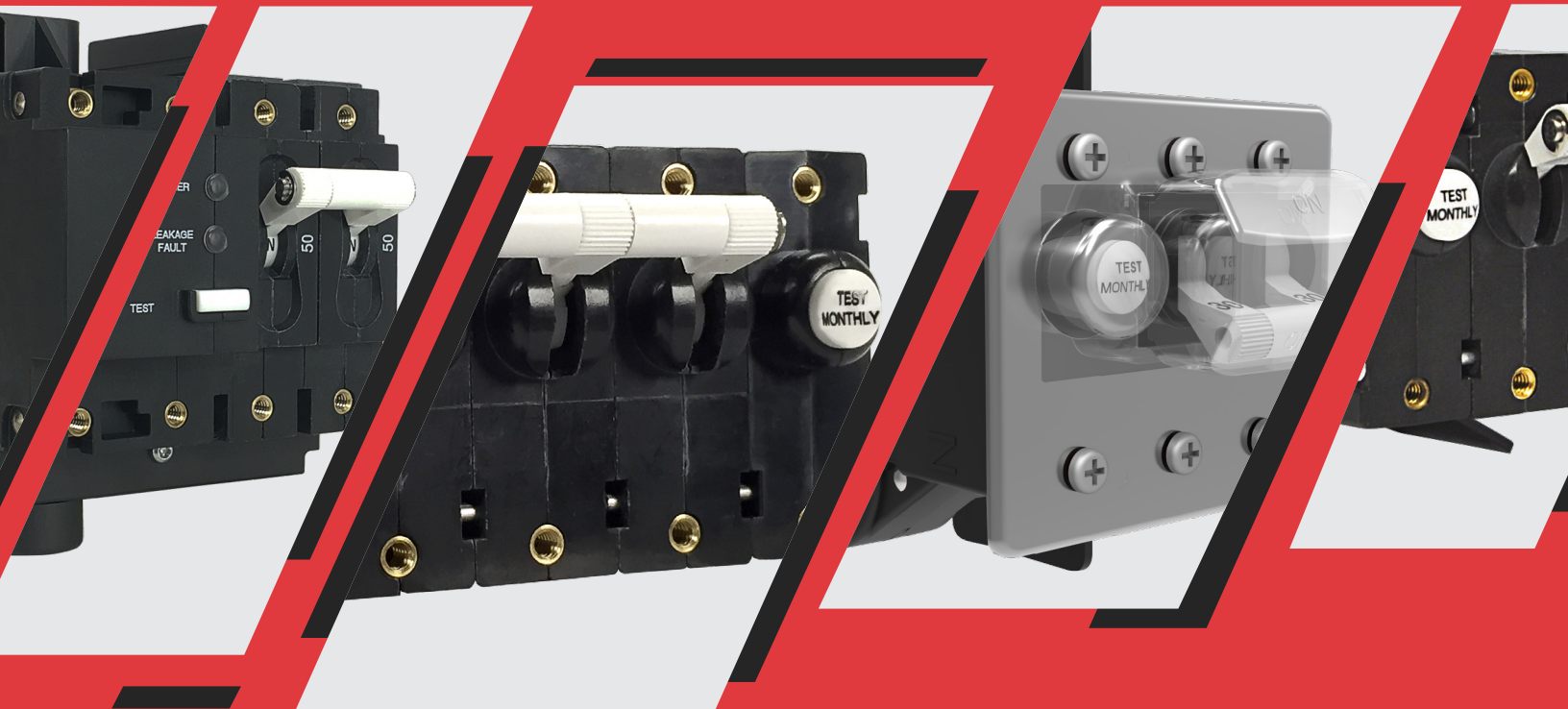
Asia-Pacific Headquarters

Carling Technologies, Asia-Pacific LTD.,

Suite 1607, 16/F Tower 2, The Gateway, Harbour City, 25
Canton Road, Tsimshatsui, Kowloon, Hong Kong
Phone: Int + 852-2737-2277
Email: sales@carlingtech.com.hk

Sales Offices:

Shenzhen, China: shenzhen@carlingtech.com
Shanghai, China: shanghai@carlingtech.com
Pune, India: india@carlingtech.com
Kaohsiung, Taiwan: taiwan@carlingtech.com
Yokohama, Japan: japan@carlingtech.com



WWW.CARLINGTECH.COM