



**Carling Technologies®**

Innovative Designs. Powerful Solutions.

# ON/OFF HIGHWAY

## SWITCHES AND CONTROLS

---



INDUSTRY BROCHURE



# Carling Technologies®

Innovative Designs. Powerful Solutions.

*With decades of design and manufacturing experience,*

Carling Technologies is the market leader in transportation application switches & control modules providing solutions to most all major OEMs. Carling's switches are widely used and the most recognizable brand in the industry with unmatched quality and aesthetics. With over 95 years of design experience, Carling Technologies is also able to provide custom product solutions such as operator control modules and custom electronic controls, that are sure to meet the most stringent design requirements.



## CORPORATE LOCATIONS

Founded in 1920, there are few products that Carling Technologies hasn't turned "ON" and fewer industries that haven't turned to Carling for solutions. With ISO and TS registered manufacturing facilities and technical sales offices worldwide, Carling ranks among the world's largest manufacturers of circuit breakers, switches, PDU's, digital switching systems and electronic controls.



- Worldwide Headquarters, **Plainville, CT, USA**  
ISO9001:2015, IATF16949:2016
- Carling Technologies Inc., **Brownsville, TX, USA**  
ISO14001:2015, ISO9001:2015, IATF16949:2016
- Interruptores de Mexico, **Matehuala, SLP, Mexico**  
ISO14001:2015, ISO9001:2015, IATF16949:2016
- Carling Technologies Ltd., **Exeter, Devon, England**  
ISO9001:2015, IATF 16949:2016
- Carling Technologies Asia-Pacific Ltd., **Tsimshatsui, Kowloon, Hong Kong**  
ISO9001:2015, IATF16949:2016
- Carlingswitch Manufacturing Co., Ltd., **Zhongshan City, Guangdong, China**  
ISO14001:2015, ISO9001:2015, IATF16949:2016



## SEALED SWITCHES

### HR-Series Halo Illumination

A perimeter illuminated sealed rocker switch, featuring a stylish, low profile actuator available in either two or three positions. It comes with a variety of illumination options.

- 1-2 Poles
- 20A 12VDC
- IP68 Rated
- Up to 10 Terminals
- .830" x 1.450" Mounting



### CSW-Series Combination Switch

The CSW-Series is a versatile combination switch featuring multi-position rotary, three-position lever, and momentary pushbutton switch functions.

- Customizable
- Ratings: 10-15A 12VDC
- IP67 Sealing Protection Above Panel
- Snap-In Mounting
- Wire Leads or Connector Termination Options



### V-Series Sealed Rocker Switch

The V-Series Contura switches are well known for their cutting-edge design, high quality, maximum performance, and unmatched reliability.

- 1-2 Poles
- Ratings: Dry circuit up to 15A, 24VDC; 15A 125VAC; 10A 250VAC
- IP66/68 sealing protection Above Panel
- Base accommodates up to 10 terminals
- Available as Full Switch or Actuator Only



### BD1-Series Battery Disconnect

Battery disconnect switch is designed to minimize battery drain, ensure maintenance personnel safety. Removable key adds an extra layer of security to protect against vehicle theft.

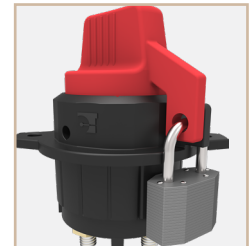
- 1 Pole
- Ratings: 2500 Amps 12VDC/24VDC
- IP67 Sealing Protection
- Permanent or Removable Key Options



### BD-Series Battery Disconnect

Battery disconnect switch is designed to minimize battery drain, ensure maintenance personnel safety, and when used in conjunction with a padlock, provide vehicle theft protection.

- 1 Pole
- Ratings: 100-300 Amps 12VDC/24VDC
- IP67 Sealing Protection
- Ergonomic Knob Actuator
- M10/M14 Stud Termination



## CONTROL MODULES & CUSTOM SOLUTIONS

### Electronic Switching

CAN based, 6-pack of SAE J1939 compatible controls provide various customizable options.

- SAE J1939 CAN 2.0b Protocol
- VM-Series: 12/24V; IP68; Dependent or Independent LED's
- CKP-Series: 8-32 V; IP69 Front Panel, IP68 Back Panel; 1, 2, or 3 LED's per load



### CLTM12-S-Series

Provides fast, low-loss, solid-state on/off switching along with short circuit protection for each output.

- SAE J1939 CAN
- 75 Amps
- IP69k Sealing Protection when Connected
- Reverse Polarity Protection
- CAN-Based Bootloader



### V-Charger

Designed to charge tablets, e-readers, mobile devices, digital cameras, as well as other compatible electronic devices.

- Dual USB Charging Ports
- 3.15 Amps for Faster Charging
- 10,000 Operating Cycles per Port
- 12-24V Operating Voltage
- Protection for Internal Components



### L-Series Controls

- **LD-Series:** Dimmer Control with Fully Programmable Circuitry
- **LMR-Series:** Controls One or Two Mirrors and up to Four Separate Motors from One Easy-To-Operate Joystick
- **LW-Series:** Electronic Wiper Washer Control Combines Two Switches into One Self-Contained Unit Controlling Both Wash and Wipe Functions from a Single Location



## European Headquarters

Carling Technologies LTD

4 Airport Business Park, Exeter Airport,  
Clyst Honiton, Exeter, Devon, EX5 2UL, UK  
Phone: Int + 44 1392.364422  
Email: ltd.sales@carlingtech.com

### Sales Offices:

Germany:  
gmbh@carlingtech.com

France:  
sas@carlingtech.com

## Worldwide Headquarters

Carling Technologies Inc.

60 Johnson Avenue,  
Plainville, CT 06062 USA  
Phone: 860.793.9281  
Email: sales@carlingtech.com

### Sales Offices:

Northern Region: nrsm@carlingtech.com  
Southeast Region: sersm@carlingtech.com  
Midwest Region: mrs@carlingtech.com  
West Region: wrsm@carlingtech.com  
Latin America: larsm@carlingtech.com

## Asia-Pacific Headquarters

Carling Technologies, Asia-Pacific LTD.,

Suite 1607, 16/F Tower 2, The Gateway, Harbour City, 25  
Canton Road, Tsimshatsui, Kowloon, Hong Kong  
Phone: Int + 852-2737-2277  
Email: sales@carlingtech.com.hk

### Sales Offices:

Shenzhen, China: shenzhen@carlingtech.com  
Shanghai, China: shanghai@carlingtech.com  
Pune, India: india@carlingtech.com  
Kaohsiung, Taiwan: taiwan@carlingtech.com  
Yokohama, Japan: japan@carlingtech.com



[WWW.CARLINGTECH.COM](http://WWW.CARLINGTECH.COM)