

# SPECIALTY

## BATTERY



**Standard 2.5mm Pitch  
9155-000**  
Application: Battery or BTB Connections  
# of Positions: 3, 4, 5  
Current Rating: 3A/Contact  
Voltage Rating: 125 VAC  
Operating Temp: -40°C to +125°C  
Key Features: 3 Contact Heights



**Right Angle 3.0mm Pitch  
9155-300**  
Application: Battery or BTB Connections  
# of Positions: 2, 3, 4, 5  
Current Rating: 3A/Contact  
Voltage Rating: 125 VAC  
Operating Temp: -40°C to +105°C  
Key Features: Tall Height Contact Engagement



**Ultra Low Profile  
9155-100**  
Application: Battery or BTB Connections  
# of Positions: 2 & 3  
Current Rating: 3A/Contact  
Voltage Rating: 125 VAC  
Operating Temp: -40°C to +105°C  
Key Features: 1.3mm-1.95mm Operating Height



**Right Angle 2.5mm Pitch  
9155-500**  
Application: Battery or BTB Connections  
# of Positions: 2, 3, 4, 5  
Current Rating: 3A/Contact  
Voltage Rating: 125 VAC  
Operating Temp: -40°C to +125°C  
Key Features: Smallest Volume Compression Connector



**Reduced 2.5mm Pitch  
9155-200**  
Application: Battery or BTB Connections  
# of Positions: 2, 3, 4, 5  
Current Rating: 3A/Contact  
Voltage Rating: 125 VAC  
Operating Temp: -40°C to +105°C  
Key Features: 50% Smaller than Standard



**Single Contact  
70-9155**  
Application: Battery or BTB Connections  
# of Positions: 1  
Current Rating: 3A/Contact  
Voltage Rating: Up to 300 VAC based on placement distance  
Operating Temp: -40°C to +125°C  
Certifications: UL1977  
Key Features: Ultra Low Profile 0.75mm-1.5mm Compressed

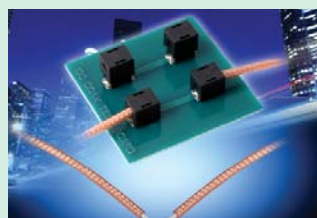
## INPUT/OUTPUT (I/O)



**Standard I/O 15p & 19p  
XX-9157**  
Application: Portable Devices; Industrial/Medical  
# of Positions: 15 or 19  
Current Rating: 1.5A max  
Voltage Rating: 125 VAC  
Operating Temp: -55°C to +125°C  
Key Features: 10,000 mating cycles, docking, With/Without Coax



**Reduced I/O 16p  
XX-9257**  
Application: Portable Devices; Industrial/Medical  
# of Positions: 8, 16  
Current Rating: 1.0A max  
Voltage Rating: 125 VAC  
Operating Temp: -55°C to +85°C  
Key Features: Sleek Locking Connector w/o Latches 5,000 Mating Cycles



**IDC SMT Coax  
00-9178**  
Application: RG178 50 Ohm Coax Cable Connection  
# of Positions: 1  
Current Rating: 0.5A  
Voltage Rating: 125 VAC  
Operating Temp: -40°C to +125°C  
VSWR: Less than 1.2:1 in excess of 700 MHz  
Key Features: Low Cost Cable-to-Board Connection



**Mini I/O 12p  
XX-9257**  
Application: Portable Devices; Industrial/Medical  
# of Positions: 12  
Current Rating: 0.5A max  
Voltage Rating: 50 VAC  
Operating Temp: -25°C to +85°C  
Key Features: 0.5mm Pitch w/5,000 Mating Cycles

## SUBSCRIBER IDENTITY MODULE (SIM)



**SIM Block  
9162-000**  
Application: Cellular Phones/Radios  
# of Positions: 6  
Current Rating: 0.5A max  
Voltage Rating: 50 Vdc  
Operating Temp: -40°C to +80°C  
Key Features: 0.8mm to 2.4mm Heights 5,000 Mating Cycles



**Locking SIM  
9162-300**  
Application: Cellular Phones/Radios  
# of Positions: 6  
Current Rating: 0.3A max  
Voltage Rating: 30 Vdc  
Operating Temp: -40°C to +125°C  
Key Features: Hinged Tray Locks in SIM Card

# AVX INTERCONNECT TECHNOLOGY LEADERSHIP

- 60+ years of connector innovation
- Patented “Eye-of-the-Needle” Compliant Pin Technology
- Patented 1-Piece Compression Contact Technology
- Developed High Performance Insulation Displacement (IDC) Contact Technology For Industrial/Transportation Markets
- Pioneered Compliant Pin and Insulation Displacement (IDC) Approvals For Automotive Systems
- Industry Leader For Innovation In Developing Single Contacts That Offer Connector Level Performance; IDC, Poke-Home and Compression



www.avx.com

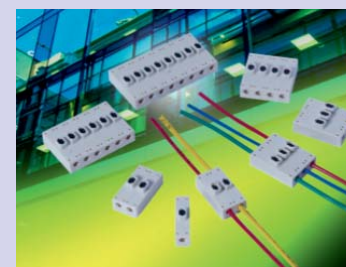


AVX's Series 9296 Poke-Home Contacts received Electronic Products Magazine "Product of the Year" award. From thousands of new products, AVX was one of 15 companies recognized who developed a product which offered a significant advancement in technology for its application, innovation in design or gain in price or performance.



## WIRE-TO-WIRE (WTW) APPLICATIONS

### POKE-HOME



**Thru Wire Connectors  
00-9286**  
Application: Discrete Wire: 18-26 AWG  
# of Positions: 1, 2, 3, 4, 6, 8  
Current Rating: Up to 8A/Contact  
Voltage Rating: 300 VAC  
Operating Temp: -40°C to +125°C  
Certifications: UL 1977  
Key Features: Solid or Standed Wire, any combination



**Junction Box Connectors  
00-9286**  
Application: Discrete Wire: 18-26 AWG  
# of Positions: 4, 6, 8  
Current Rating: 8A Total  
Voltage Rating: 300 VAC  
Operating Temp: -40°C to +125°C  
Certifications: UL 1977  
Key Features: Solid or Standed Wire, any combination

UL and the UL logo are trademarks of UL LLC © 2014 All Rights Reserved.



# Industrial Connector Selector Guide



A KYOCERA GROUP COMPANY

## 2-PIECE CONNECTORS



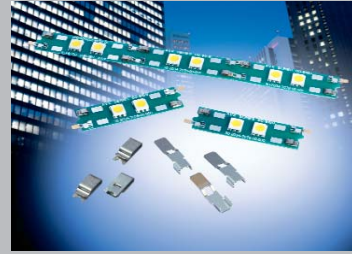
**UL** **Horizontal Plug**  
**10-9159**  
 Application: Linear BTB  
 # of Positions: 2, 3, 4, 5, 6  
 Current Rating: 5A/Contact  
 Voltage Rating: 125 VAC  
 Operating Temp: -40°C to +125°C  
 Certifications: UL 1977  
 Key Features: Lowest Profile/  
 Highest Current



**UL** **Top Load Socket**  
**22-9159**  
 Application: Linear BTB  
 # of Positions: 2, 3, 4, 5, 6  
 Current Rating: 5A/Contact  
 Voltage Rating: 125 VAC  
 Operating Temp: -40°C to +125°C  
 Certifications: UL 1977  
 Key Features: Allows Complete LED  
 PCB Replacement



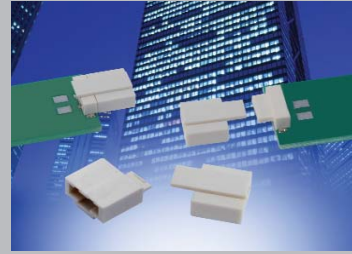
**UL** **Vertical Plug**  
**13-9159**  
 Application: Perpendicular BTB  
 # of Positions: 2, 3, 4, 5, 6  
 Current Rating: 5A/Contact  
 Voltage Rating: 125 VAC  
 Operating Temp: -40°C to +125°C  
 Certifications: UL 1977  
 Key Features: Adds Vertical/  
 Perpendicular Mating



**UL** **Single 2pc Contacts**  
**70-9159**  
 Application: Linear BTB  
 # of Positions: 1  
 Current Rating: 5A/Contact  
 Voltage Rating: -40°C to +125°C  
 Certifications: UL 1977  
 Key Features: Low Cost Coplanar  
 PCB Mating



**UL** **Horizontal Socket**  
**20-9159**  
 Application: Linear BTB  
 # of Positions: 2, 3, 4, 5, 6  
 Current Rating: 5A/Contact  
 Voltage Rating: 125 VAC  
 Operating Temp: -40°C to +125°C  
 Certifications: UL 1977  
 Key Features: Lowest Profile/  
 Highest Current



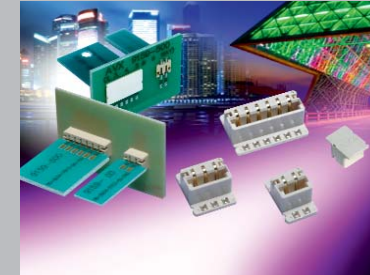
**UL** **Shorting Socket**  
**58-9159**  
 Application: Shorting Socket  
 # of Positions: 2  
 Current Rating: 5A/Contact  
 Voltage Rating: 125 VAC  
 Operating Temp: -40°C to +125°C  
 Certifications: UL 1977  
 Key Features: Creates a Closed  
 Loop Circuit

# BOARD-TO-BOARD (BTB) APPLICATIONS

## 1-PIECE CARD EDGE



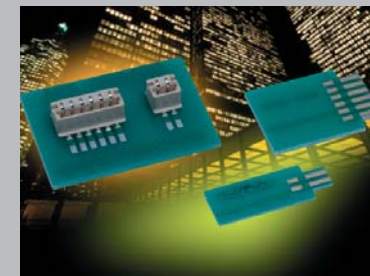
**UL** **Standard**  
**00-9159**  
 Application: Linear BTB  
 # of Positions: 2, 3, 4, 5  
 Current Rating: 3A/Contact  
 Voltage Rating: 300 VAC  
 Operating Temp: -40°C to +125°C  
 Certifications: UL 1977  
 Key Features: Low Cost Coplanar PCB  
 Mating



**UL** **Inverted Thru Board**  
**00-9159**  
 Application: Perpendicular BTB  
 # of Positions: 2, 3, 4, 5, 6  
 Current Rating: 2A/Contact  
 Voltage Rating: 300 VAC  
 Operating Temp: -40°C to +120°C  
 Certifications: UL 1977  
 Key Features: Replaces Soldered Wires  
 in Bulb Application



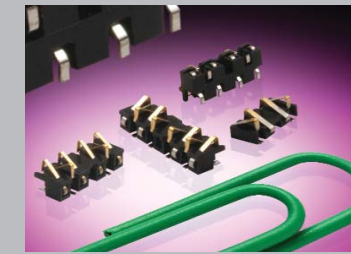
**UL** **Open Ended**  
**00-9159**  
 Application: Linear BTB  
 # of Positions: 4, 6, 8, 10  
 Current Rating: 3.0 amps 4p/6p  
 2.5 amps 8p/10p  
 Voltage Rating: 300 VAC  
 Operating Temp: -40°C to +125°C  
 Certifications: UL 1977  
 Key Features: Narrowest PCB in Linear  
 Lighting



**UL** **Vertical Top Mount**  
**00-9159**  
 Application: Perpendicular BTB  
 # of Positions: 2, 3, 4, 5, 6  
 Current Rating: 2A/Contact  
 Voltage Rating: 300 VAC  
 Operating Temp: -40°C to +120°C  
 Certifications: UL 1977  
 Key Features: Only Low Pin Count  
 Vertical Connector



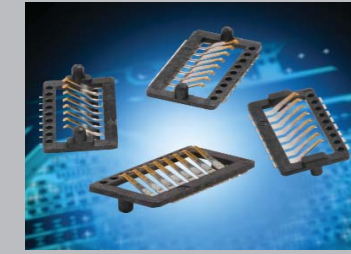
**UL** **Ultra Low Profile**  
**00-9155**  
 Application: Parallel PCB Stack-  
 ing  
 # of Positions: 2p & 3p  
 Current Rating: 3A/Contact  
 Voltage Rating: 125 VAC  
 Operating Temp: -40°C to +105°C  
 Key Features: 1.3mm Compressed  
 Height, 5k Cycles



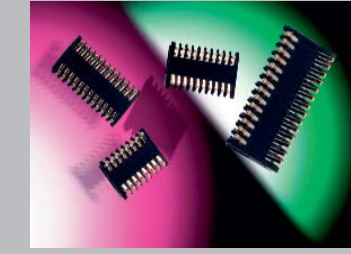
**UL** **Staggered Stacker**  
**00-9188**  
 Application: Parallel PCB Stacking  
 # of Positions: 4, 6, 8  
 Current Rating: 1A/Contact  
 Voltage Rating: 125 VAC  
 Operating Temp: -55°C to +125°C  
 Key Features: Large "X & Y" Axis  
 Tolerance Absorption



**UL** **Single Compression Contacts**  
**70-9155**  
 Application: Parallel PCB Stacking  
 # of Positions: 1  
 Current Rating: 3A/Contact  
 Voltage Rating: Up to 300 VAC  
 Operating Temp: -40°C to +125°C  
 Certifications: UL 1977  
 Key Features: Ultra Low Profile  
 0.75mm-1.5mm  
 Compressed



**UL** **Ultra Low Profile Stacker**  
**00-9258**  
 Application: Parallel PCB Stacking  
 # of Positions: 8  
 Current Rating: 1A/Contact  
 Voltage Rating: 125 VAC  
 Operating Temp: -55°C to +125°C  
 Key Features: 0.4mm & 0.8mm  
 Compressed Heights



**UL** **Dual Row Stacker**  
**00-9158**  
 Application: Parallel PCB Stacking  
 # of Positions: 16p-28p Standard  
 Current Rating: 1A/Contact  
 Voltage Rating: 125 VAC  
 Operating Temp: -55°C to +125°C  
 Key Features: 0.7mm "Z" Axis  
 Tolerance Absorption



**UL** **Pogo-Pin**  
**70-9150**  
 Application: BTB & Docking  
 # of Positions: 1  
 Current Rating: 1A/Contact  
 Voltage Rating: Based on Placement  
 Distance  
 Operating Temp: -40°C to +125°C  
 Key Features: 2.0mm to 5.0mm  
 Compressed Heights

## INSULATION DISPLACEMENT (IDC)



**UL** **Standard 26-28 AWG**  
**00-9175**  
 Application: Discrete Wire  
 # of Positions: 2 & 3  
 Current Rating: 1A/Contact  
 Voltage Rating: 150 VAC  
 Operating Temp: -40°C to +125°C  
 Certifications: UL 1977  
 Key Features: "Gas Tight" Wire  
 Termination to PCB



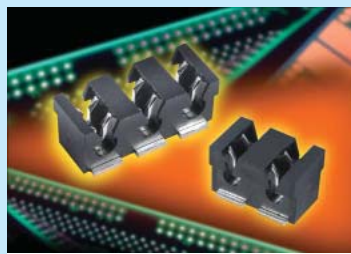
**UL** **Capped 18-24 AWG**  
**9176-700**  
 Application: Discrete Wire  
 # of Positions: 1, 2, 3  
 Current Rating: 10A/Contact  
 Voltage Rating: 1p: 600 VAC,  
 2p/3p: 300 VAC  
 Operating Temp: -40°C to +125°C  
 Certifications: UL 1977  
 Key Features: Integrated Cap  
 Simplifies Assembly



**UL** **Capped 26-28 AWG**  
**9175-700**  
 Application: Discrete Wire  
 # of Positions: 2 & 3  
 Current Rating: 1A/Contact  
 Voltage Rating: 150 VAC  
 Operating Temp: -40°C to +125°C  
 Certifications: UL 1977  
 Key Features: Integrated Cap  
 Simplifies Assembly



**UL** **Single IDC Contact 22-28 AWG**  
**9176-400**  
 Application: Discrete Wire  
 # of Positions: 1  
 Current Rating: 6A/Contact  
 Voltage Rating: 300 VAC  
 Operating Temp: -40°C to +125°C  
 Certifications: UL 1977  
 Key Features: Low Cost Single  
 "Gas Tight" WTB



**UL** **Standard 18-24 AWG**  
**00-9176**  
 Application: Discrete Wire  
 # of Positions: 1, 2, 3  
 Current Rating: 10A/Contact  
 Voltage Rating: 1p: 600 VAC,  
 2p/3p: 300 VAC  
 Operating Temp: -40°C to +125°C  
 Certifications: UL 1977  
 Key Features: "Gas Tight" Wire  
 Termination to PCB



**UL** **Single IDC Contact 18-24 AWG**  
**9176-500**  
 Application: Discrete Wire  
 # of Positions: 1  
 Current Rating: 10A/Contact  
 Voltage Rating: 300 VAC  
 Operating Temp: -40°C to +125°C  
 Certifications: UL 1977  
 Key Features: Low Cost Single  
 "Gas Tight" WTB

## WIRE-TO-BOARD (WTB) APPLICATIONS

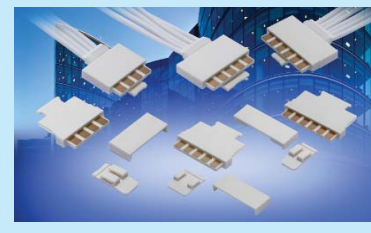


**UL** **Standard 14-20 AWG**  
**00-9177**  
 Application: Discrete Wire  
 # of Positions: 1, 2, 3  
 Current Rating: 15A/Contact  
 Voltage Rating: 300 VAC  
 Operating Temp: -40°C to +120°C  
 Certifications: UL 1059  
 Key Features: "Gas Tight" Wire  
 Termination to PCB



**UL** **PTH 12-18 AWG**  
**00-9177/9177-600**  
 Application: Discrete Wire  
 # of Positions: 1  
 Current Rating: 15A  
 Voltage Rating: 600 VAC  
 Operating Temp: -40°C to +125°C  
 Certifications: N/A  
 Key Features: "Gas Tight"  
 Single Contacts

## 2-PIECE



**UL** **Solder Cup Plug**  
**11-9159**  
 Application: Soldering WTB 2-Piece  
 Connector with Latch  
 # of Positions: 2, 3, 4, 5, 6  
 Current Rating: 5A/Contact  
 Voltage Rating: 125 VAC  
 Operating Temp: -40°C to +120°C  
 Certifications: UL 1977  
 Key Features: Brings PWR, GND and  
 Signals to PCB



**UL** **IDC Socket 22-24 AWG**  
**24-9159**  
 Application: IDC with Latch  
 # of Positions: 2, 3, 4, 5, 6  
 Current Rating: 5A/Contact  
 Voltage Rating: 125 VAC  
 Operating Temp: -40°C to +125°C  
 Certifications: UL 1977  
 Key Features: Low Cost Termination



**UL** **IDC Plug 22-24 AWG**  
**14-9159**  
 Application: IDC with Latch  
 # of Positions: 2, 3, 4, 5, 6  
 Current Rating: 5A/Contact  
 Voltage Rating: 125 VAC  
 Operating Temp: -40°C to +125°C  
 Certifications: UL 1977  
 Key Features: Low Cost Termination

## POKE-HOME



**UL** **Horizontal Poke-Home 18-26 AWG**  
**00-9276**  
 Application: Wire-to-Board  
 # of Positions: 1, 2, 3, 4, 6, 8  
 Current Rating: 6A/Contact  
 Voltage Rating: 300 VAC  
 Operating Temp: -40°C to +125°C  
 Certifications: UL 1977  
 Key Features: Simple Strip and Poke  
 In Wire Termination



**UL** **Inverted Thru Board: 18-26 AWG**  
**00-9296**  
 Application: Inverse Wire-to-Board  
 # of Positions: 1, 2, 3, 4, 5, 6  
 Current Rating: Up to 7A/Contact  
 Voltage Rating: 200 VAC  
 Operating Temp: -40°C to +125°C  
 Certifications: UL 1977  
 Key Features: Unique 1-Piece Vertical  
 WTB to compete with  
 2-piece



**UL** **Single Horizontal Contacts 12-28 AWG**  
**70-9296**  
 Application: Wire-to-Board  
 # of Positions: 1  
 Current Rating: Up to 20A  
 Voltage Rating: Dependent on Contact  
 Spacing  
 Operating Temp: -40°C to +125°C  
 Certifications: UL 1977  
 Key Features: Low Cost, Single Contact  
 WTB



**UL** **Single Vertical Contacts: 18-26 AWG**  
**70-9296**  
 Application: Vertical & Inverse WTB  
 # of Positions: 1  
 Current Rating: Up to 15A/Contact  
 Voltage Rating: 300 VAC  
 Operating Temp: -40°C to +125°C  
 Certifications: UL 1977  
 Key Features: Top & Bottom Entry WTB  
 FR4 and MCB's



**UL** **Vertical Top Entry: 18-26 AWG**  
**00-9296**  
 Application: Wire-to-Board  
 # of Positions: 1, 2, 3, 4, 5, 6  
 Current Rating: Up to 7A/Contact  
 Voltage Rating: 200 VAC  
 Operating Temp: -40°C to +125°C  
 Certifications: UL 1977  
 Key Features: Unique 1-Piece Vertical  
 WTB to compete with  
 2-piece