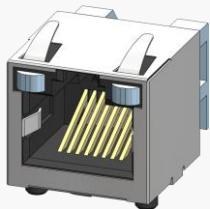


About Amphenol Commercial Products

Amphenol's commercial connector products are used in a variety of end user applications including networking, telecom, server & computer, storage & HDD, consumer electronics and entertainment, professional audio & Industrial & Military/Aerospace.

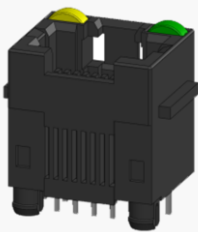
Related Products

RJSSE

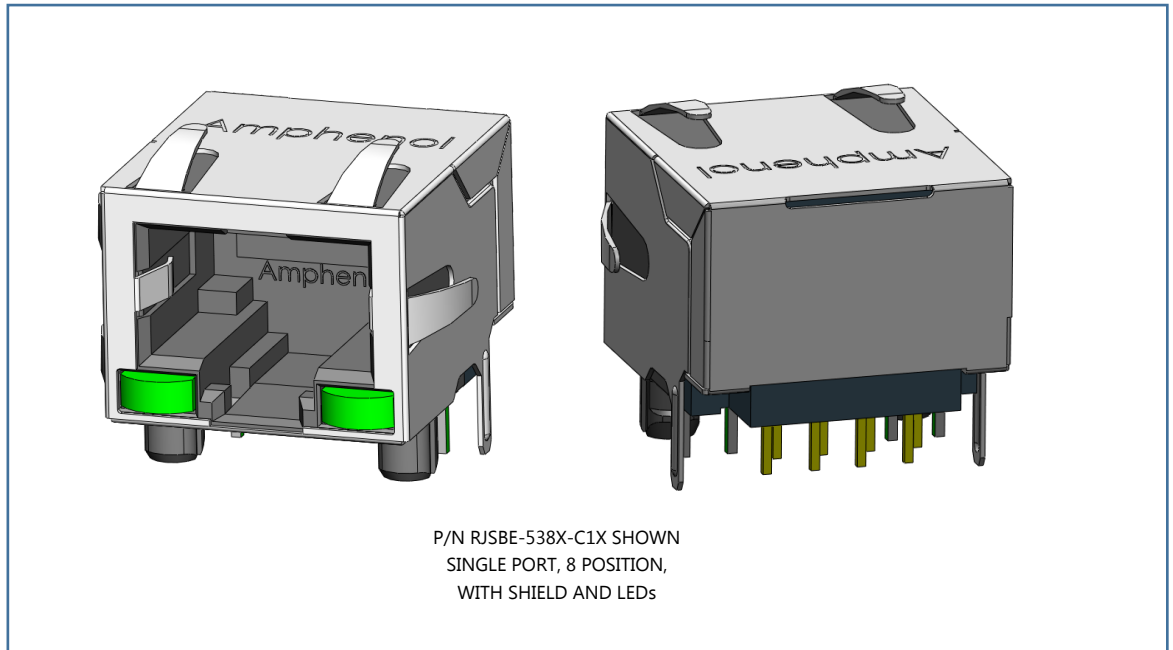


P/N RJSSE-3081 SHOWN SINGLE PORT, 8 POSITION, WITH SHIELD AND LIGHT PIPE

RJHSE



P/N RJHSE-3081 SHOWN SINGLE PORT, 8 POSITION WITHOUT SHIELD, WITH LEDs



P/N RJSBE-538X-C1X SHOWN SINGLE PORT, 8 POSITION, WITH SHIELD AND LEDs

OVERVIEW

This product specification defines the general use and performance parameters for Amphenol's RJSBE series of modular jacks.

Availability: 1x1, 1x2 and 1x4 ports available with a wide variety of LED and shielding options.

USAGE

The RJSBE series of modular jacks supports Ethernet Protocols. Shielding available with and without a Ferrite filter for increased EMI performance and LEDs for Link Activity and Network Speed verification.

APPLICATIONS

Intended for use in applications such as:

Data

- Storage
- Servers
- Routers
- Switches
- Hubs

Consumer Goods

- Security Systems
- Set Top Boxes
- Video Game Systems
- PCs, Laptops
- Copiers, Printers

Industrial and Instrumentation

- Uninterruptible Power Supply (UPS)
- ATMs
- Vending Machines
- POS Terminals
- Industrial IoT Platforms

Networking & Telecom

- 5G Wireless
- Telephones
- Modems
- Fax Machines

Medical

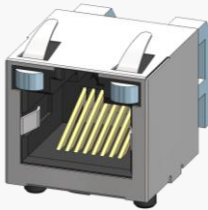
- Analysis Equipment
- Mass Spectrometers

About Amphenol Commercial Products

Amphenol's commercial connector products are used in a variety of end user applications including networking, telecom, server & computer, storage & HDD, consumer electronics and entertainment, professional audio & Industrial & Military/Aerospace.

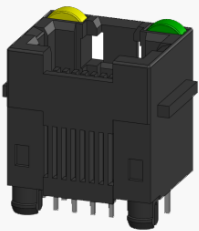
Related Products

RJSSE



P/N RJSSE-3081 SHOWN SINGLE PORT, 8 POSITION, WITH SHIELD AND LIGHT PIPE

RJHSE



P/N RJHSE-3081 SHOWN SINGLE PORT, 8 POSITION WITHOUT SHIELD, WITH LEDs

ELECTRICAL CHARACTERISTICS

Contact Resistance	20 mΩ maximum
Insulation Resistance	500 MΩ minimum at 500V DC for 2 minutes max
Current Rating	1.5 Amps per contact
Voltage Rating	125 Volts AC
DWV	1000 VAC, 60 Hz. 1 min
LED Forward DC Current	20mA typical
LED Forward Voltage	1.9 Volts max. @ 2mA (for single colours) 2.6 Volts max. @ 20mA (for Bi-colours)
LED Reverse Voltage	5 Volts minimum
LED Light Intensity	0.4 to 1.5 mcd @ 2mA (for single colors) 0.5 mcd min @ 2mA (for Bi-colors)
LED Wavelength	Yellow: 587± 7 nm measured @ 20mA Green: 565 ± 6 nm measured @ 20mA Red: 625 ± 5 nm measured @ 20mA

Supports PoE, PoE+, and PoE++ per IEEE PoE standards
IP20 rated per IEC 60529

MECHANICAL CHARACTERISTICS

Mating Connector Insertion Force	5.0 lbs maximum
Mating Connector Pull Retention Force	20.0 lbs minimum
Durability	750 mating and unmating cycles for 50μ" gold plating
Recommended Soldering Temperature	Wave soldering peaked at 260°C for 5 seconds maximum
Operating Temperature	-40°C to +70°C

UL File #: E135615

About Amphenol Commercial Products

Amphenol's commercial connector products are used in a variety of end user applications including networking, telecom, server & computer, storage & HDD, consumer electronics and entertainment, professional audio & Industrial & Military/Aerospace.

MATERIAL REQUIREMENTS

RJSBE connectors are RoHS compliant.

Unless otherwise specified, the materials for each component shall be:

Insulator	Engineering thermoplastic, flammability rating UL 94V-0
Contacts	-Phosphor Bronze hard temper with gold thickness options (6µ", 15µ", 30µ", 50µ") over 50µ" minimum Nickel on contact mating area -100µ" minimum matte tin plating on soldering tail
Shield	Copper alloy; Nickel plated with pure tin dipped tail
LED	Pure Tin plating on LED tails

AVAILABLE DOCUMENTS

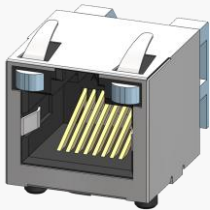
Below is a list of the most popular standard sales drawings:

Contact our website, sales, or an authorized Amphenol representation for additional drawings.

RJSBE-706X-02	Two ports. Through hold, no shield, 6 contacts, with LEDs
RJSBE-538X-F1	Single port, through hole, shielded with EMI tabs, with LEDs
RJSBE-5F8X-C1X	Single port, through hole, shielded without EMI tabs, with LEDs

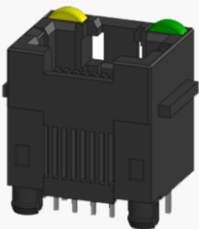
Related Products

RJSSE



P/N RJSSE-3081 SHOWN SINGLE PORT, 8 POSITION, WITH SHIELD AND LIGHT PIPE

RJHSE



P/N RJHSE-3081 SHOWN SINGLE PORT, 8 POSITION WITHOUT SHIELD, WITH LEDs