



THE FUTURE OF FLIGHT TODAY

Products for Advanced Air Mobility (AAM) and Electric Vertical Take-off and Landing (eVTOL) Applications from Amphenol Pcd

Advanced Air Mobility airframes are defining a new era of commuting transportation. While early unmanned systems utilized legacy aerospace interconnects, newly developed eVTOL and UAM aircraft serving the AAM market demand smaller, lighter and customizable solutions. Amphenol Pcd's innovative solutions keep pace with these demands, with a wide array of connectors, wire management clamps and custom assemblies that meet these new requirements. Amphenol Pcd's solutions are light weight, compact, and cost effective, building on years of experience in the demanding aerospace market.

Cockpit

- AS80549 Backshells
- Cable Harnessing
- EN4165 SIM, SIM Plates & Quick Release Plates
- Ground Modules (81714 Style, 1758,1174 Circular)
- Inline Splices/Electronic Splices (81714 Style, 1119)
- Junction Modules (81714 Style, 1750,1758)
- Luminus, Pegasus & Nano Pegasus Circular
- M12883 & Quickmount Relay Sockets
- Solaris Rectangular
- USB IFE Power Module

Fuselage

- 75P & 86P Cable Clamps
- ABS1424/ABS1694/1695 Cable & Pipe guides
- Adhesive Snap 'N Post, Standoff Tie Mounts & U-Snap Clamps
- CC1339 & CC5516 Light Clamps
- EN3545/1900 Rectangular
- Fairlead Block Pipe Guides
- Ground Modules (81714 Style, 1758,1174 Circular)
- Inline Splices/Electronic Splices (81714 Style, 1119)
- Junction Modules (81714 Style, 1750,1758)
- Lightening Hole Bushings
- M12883 & Quickmount Relay Sockets
- Power Feeder Spacers
- Raptor

Passenger

- 3559 Lighting & Cabin Connectors
- ASR Rectangular Connectors
- Bluetooth IFE Module
- Cable Harnessing
- Composite Backshells
- Ground Modules (81714 Style, 1758,1174 Circular)
- Junction Modules (81714 Style, 1750,1758)
- Luminus & Pegasus Circular
- M12883 & Quickmount Relay Sockets
- M24308 DSubs
- MagJack Noise Cancelling Jack
- SIM/EN4165 & SIM Splice
- Solaris Rectangular
- Inline Splices/Electronic Splices (81714 Style, 1119)
- USB IFE Power Module

Power Generation & Propulsors

- 1900SIM Rectangular
- Circular & Rectangular Multi-pole Rhino
- Custom Backshells
- EN4165/SIM & SIM Monomodule
- Engine Backshells
- Ground Blocks (81714 Style, 1758,1174 Circular)
- Ground Power Receptacle
- HARP Power Connector
- Inline Splices/Electronic Splices (81714 Style, 1119)
- Junction Modules (81714 Style, 1750,1758)
- Luminus & Pegasus Circular
- Raptor & Raptor Feedthrough

Wings

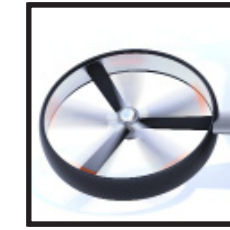
- 3240/3242 Assemblies
- 75P Cable Clamps
- ABS14XX Pipe Clamps
- Cable Harnessing
- Fairlead Block Pipe Guides
- Ground Modules (81714 Style, 1758,1174 Circular)
- Inline Splices/Electronic Splices (81714 Style, 1119)
- Junction Modules (81714 Style, 1750,1758)
- Luminus & Pegasus Circular
- SIM Fiber & RJ45 Cat6 Modules
- Solaris Rectangular



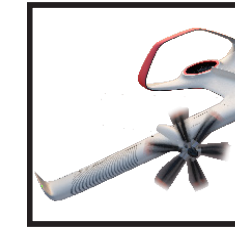
Cockpit



Passenger



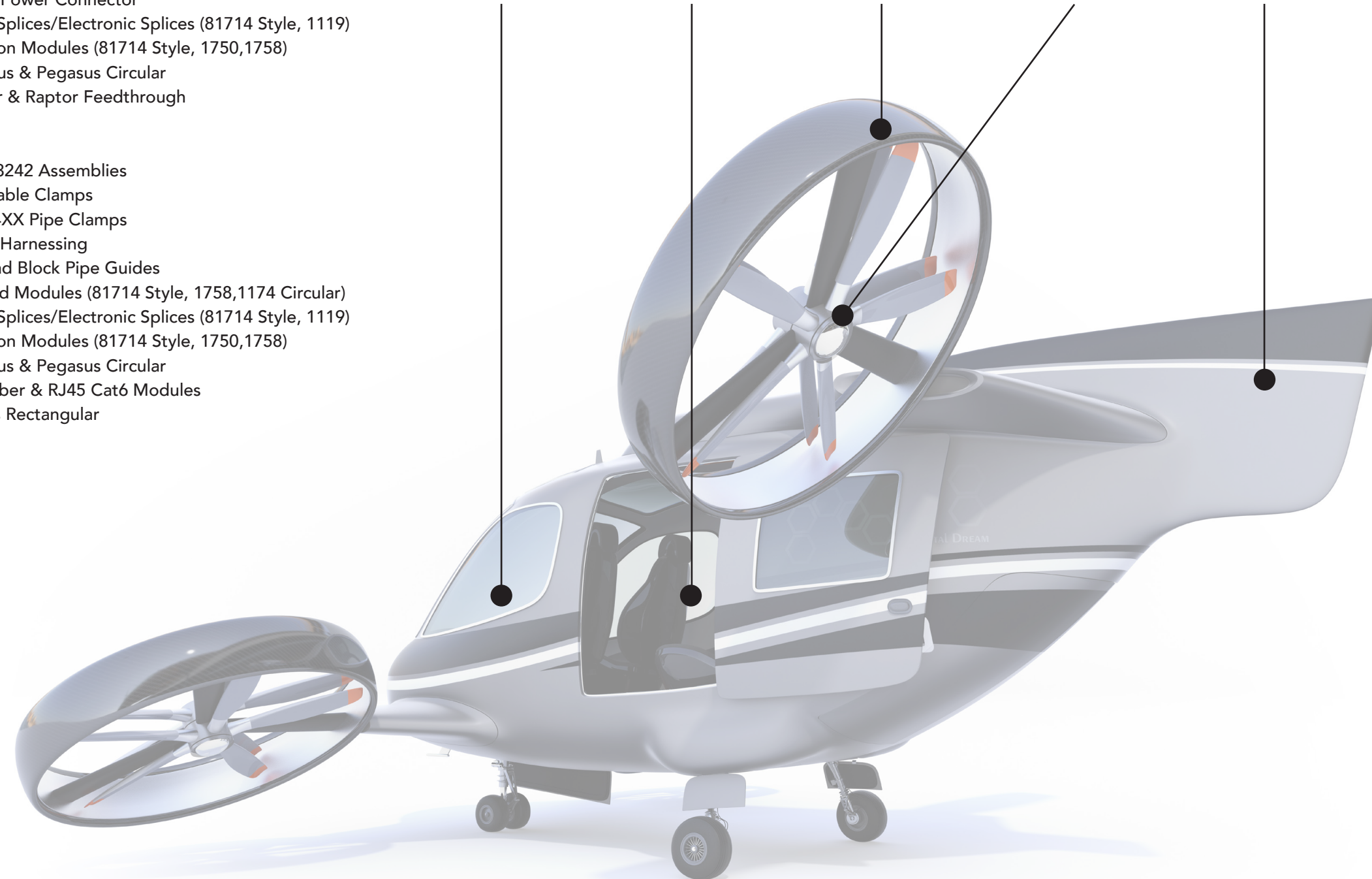
Power Generation & Propulsors



Wings



Fuselage



[VIEW PRODUCTS](#)

Cockpit

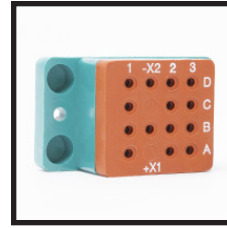
Flightdecks are the heart of any aircraft and that is true even in Advanced Air Mobility vehicles. Secure communications and controls & actuation all need highly reliable connectors - as the amount transmissions increase so do the amount of connections. Amphenol's product solutions are engineered with the highest quality standards in the industry. From our Mil Spec solutions to our custom cockpit plates you can rely on Amphenol.

Cockpit/Flightdeck Applications:

- Avionics
- Controls & Actuation
- USB Power
- EFB Ground Communications

Amphenol Products:

- AS80549 Backshells
- Cable Harnessing
- EN4165 SIM, SIM Plates & Quick Release Plates
- Ground Modules (81714 Style, 1758,1174 Circular)
- Inline Splices/Electronic Splices (81714 Style, 1119)
- Junction Modules (81714 Style, 1750,1758)
- Luminus, Pegasus & Nano Pegasus Circular
- M12883 & Quickmount Relay Sockets
- Solaris Rectangular
- USB IFE Power Module



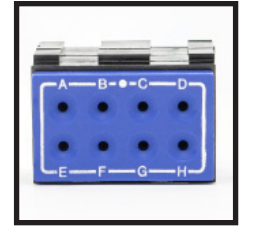
M12883 & Quickmount Relay Sockets



USB IFE Power Module



Nano Pegasus



Junction Modules (81714 Style, 1750)



[VIEW PRODUCTS](#)

Fuselage

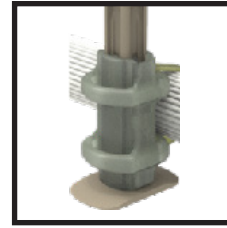
Although the main body of future aircraft will look dramatically different from what we are familiar with today it will still require a vast number of rugged connectors, harnessing solutions and system attachments. Lighter weight, easier to install and composite materials are all improvements Amphenol can offer over traditional aerospace solutions.

Fuselage Applications:

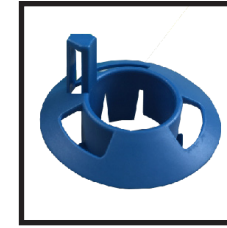
- Power Distribution
- EWIS management

Amphenol Products:

- 75P & 86P Cable Clamps
- ABS1424/ABS1694/1695 Cable & Pipe guides
- Adhesive Snap 'N Post, Standoff Tie Mounts & U-Snap Clamps
- CC1339 & CC5516 Light Clamps
- EN3545/1900 Rectangular
- Fairlead Block Pipe Guides
- Ground Modules (81714 Style, 1758,1174 Circular)
- Inline Splices/Electronic Splices (81714 Style, 1119)
- Junction Modules (81714 Style, 1750,1758)
- Lightening Hole Bushings
- M12883 & Quickmount Relay Sockets
- Power Feeder Spacers
- Raptor



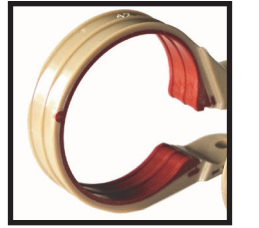
Adhesive Snap 'N Post



Lightening Hole Bushing



U-Snap Clamps



CC5516 Light Clamps



[VIEW PRODUCTS](#)

Passenger

Passenger spaces within most future advanced mobility aircraft will be dramatically smaller and outfitted with the latest technology advancements. Interior componentry from Lighting to Inflight Entertainment & Communications will all need to be spatially smaller and much lighter than in today's larger commercial airliners. Access to personal power and wireless charging will be a necessity for tomorrow's passengers as well. As the leader in cabin connectivity solutions Amphenol has already helped define the future with our light weight & simple to use products.

Passenger Applications:

- IFE & Communications Internal Lighting
- Air Conditioning
- Water & Waste Management Safety Systems

Amphenol Products:

- 3559 Lighting & Cabin Connectors
- ASR Rectangular Connectors
- Bluetooth IFE Module
- Cable Harnessing
- Composite Backshells
- Ground Modules (81714 Style, 1758,1174 Circular)
- Junction Modules (81714 Style, 1750,1758)
- Luminus & Pegasus Circular
- M12883 & Quickmount Relay Sockets
- M24308 DSubs
- MagJack Noise Cancelling Jack
- SIM/EN4165 & SIM Splice
- Solaris Rectangular
- Inline Splices/Electronic Splices (81714 Style, 1119)
- USB IFE Power Module



Cable Harnessing



Luminus & Pegasus Circular



Bluetooth IFE Module



MagJack Noise Cancelling Jack



[VIEW PRODUCTS](#)

Power Generation & Propulsors

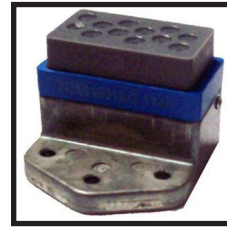
Amphenol offers the highest performing connectors for aerospace. From connectors to ground charging solutions coupled with our harness assembly capability and we become the end-to-end solution for AAM electric motor and power distribution requirements. We have the expertise to optimize Size, Weight and Power Performance (SWaPP) in reliably designed products with minimal weight penalty.

Power Generation & Propulsors Applications:

- Battery
- Motors
- High Voltage Ground Charging

Amphenol Products:

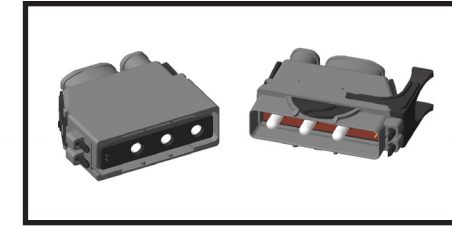
- 1900SIM Rectangular
- Circular & Rectangular Multi-pole Rhino
- Custom Backshells
- EN4165/SIM & SIM Monomodule
- Engine Backshells
- Ground Blocks (81714 Style, 1758,1174 Circular)
- Ground Power Receptacle
- HARP Power Connector
- Inline Splices/Electronic Splices (81714 Style, 1119)
- Junction Modules (81714 Style, 1750,1758)
- Luminus & Pegasus Circular
- Raptor & Raptor Feedthrough



Ground Modules
(M81714,1758,1174 Circular)



Raptor & Raptor
Feedthrough



HARP Power Connector



Inline Inline Splices/
Electronic Splices
(M81714 Style, 1119)



[VIEW PRODUCTS](#)

Wings

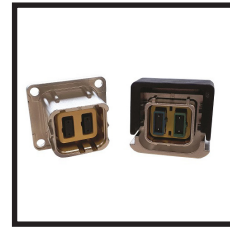
Wings are one of the most dense and harshest environmental areas of any aircraft with vast amounts of technology routed within a very tight space. Fiber optics, fuel and hydraulics, power distribution, flight controls all lay side by side with extreme temperature fluctuations & vibrations. Amphenol's products are built to accommodate the most extreme conditions no matter the environment.

Wing Applications:

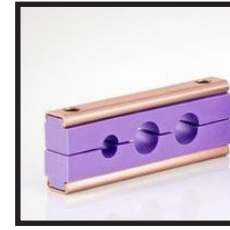
- Power Distribution / Busbars Actuation
- External Lighting
- Flight Control Systems

Amphenol Products:

- 3240/3242 Assemblies
- 75P Cable Clamps
- ABS14XX Pipe Clamps
- Cable Harnessing
- Fairlead Block Pipe Guides
- Ground Modules (81714 Style, 1758,1174 Circular)
- Inline Splices/Electronic Splices (81714 Style, 1119)
- Junction Modules (81714 Style, 1750,1758)
- Luminus & Pegasus Circular
- SIM Fiber & RJ45 Cat6 Modules
- Solaris Rectangular



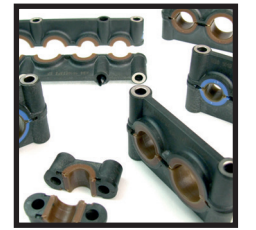
SIM Fiber



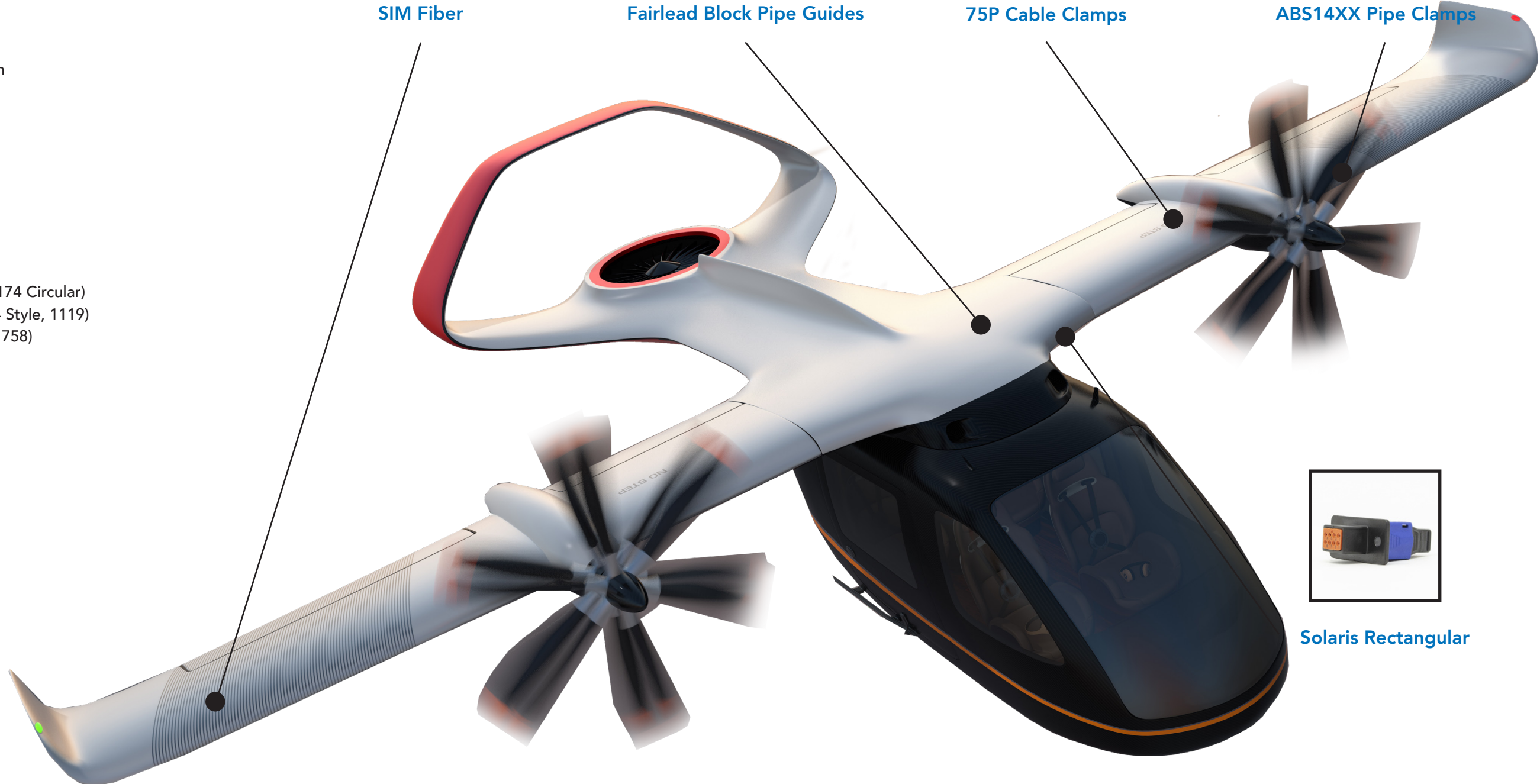
Fairlead Block Pipe Guides



75P Cable Clamps



ABS14XX Pipe Clamps



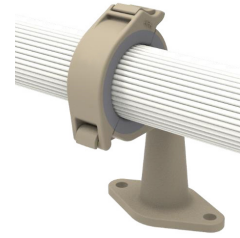
Solaris Rectangular

[VIEW PRODUCTS](#)



75P Clamps

75P Clamps were designed as a one-for-one replacement to outperform industry standard metal clamps (i.e. AS21919). Featuring a locking feature, butterfly stacking, weight savings, durable PEEK polymer band material and multiple cushion material options that are non-conductive, non-corrosive. 75P Clamps are a versatile solution for reducing weight and installation time.



86P Clamps

86P Clamps were designed as a one-for-one replacement to outperform industry standard metal clamps (i.e. AS21919). Featuring separate locking and mounting locations, a bottom hinge for easy wire bundle installation, and a non-conductive, non-corrosive PEEK polymer construction. 86P Clamps are a versatile solution for reducing weight and installation time.



1119 In-Line Junctions

1119 In-line Junctions are available in 1 to 4 contact versions, for copper or aluminum cable contacts, and exist in components carrier versions (diodes, resistors or fuses inserted). Fully sealed, compact, thin and easy to use, perfectly suited in a cable harness to easily insert a component and change a signal. Simple to repair a damaged wire.



3559 Connector

3559 connector is a mono modular, push-pull connector that is ideal for In-Flight Entertainment Systems, Lighting, Cabin Service Systems, and other interconnect system requirements. Ideal where shielding is not necessary, the 3559 connector is light weight and composite. This series also uses standard EN4165 modules enabling modularity and sealing in a variety of configurations.



ABS14XX Pipe Clamps

ABS 14xx Pipe Clamps allow the perfect fixing of hydraulic pipes on a structure. Fully designed in composite with silicon overmolding, providing a perfect protection to the pipes from shock and vibrations. Multiple versions available, for general (brown silicon) or fuel zone use (blue silicon), with 1 to 5 holes from various and mixed diameters (from 6.3 to 19 mm). ABS 14xx pipes clamps are closed and fixed on structure by screws.



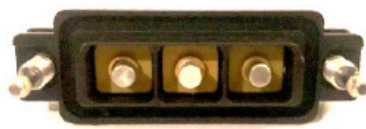
ABS1424/1694/1695 Brackets

Brackets designed to help guide wire bundles, hydraulic pipes and ventilation conduits throughout the aircraft. Lightweight and high performance black thermoplastic, conform to ABD031 flammability standard and shock rated to RTCA/DO-160G cat. Accommodates various structural thicknesses. REACH/RoHS compliant and supports operating temperatures from -67°F to +185°F.



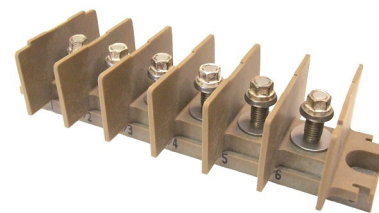
1750 Quick Junction Modules

1750 Quick Junction Modules for signal and low current distribution, where sealing (IP66/68/69K), space and weight-saving are required. Specifically for wiring optimization these track-mounted modules (metallic or composite track) are available from 8 contacts size 12 up to 36 contacts size 22 in various contact configurations. Hybrid or ground versions and PCB or component carrier versions available. REACH/RoHS compliant and conform to ABD0031 and FAR 25853.



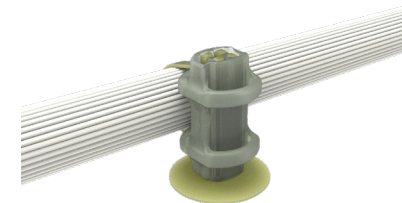
1900 SIM

1900SIM is a 3 modules rectangular connector providing versatility and high density within a small form factor. Fitted with overmolded SIM modules offering best-in-class dielectric and sealing performances. They come in composite version for weight savings. Available with modules from 30 contacts size 23 (5 Amps) up to 1 contact size 8 (up to 80 Amps).



3240/3242 Assemblies

3240/3242 Assemblies designed for power distribution purposes, the monoblock assemblies are made of terminal junction block, for copper or aluminum cable connections. Monoblock assemblies are available with individual or shunted terminals, from 1 to 12 terminals, in different diameters. The protective cover fixing, as well as the terminal assemblies fixing on structure, are ensured by pillar bolts.



Adhesive Snap 'N Post

Adhesive Snap 'N Posts were designed as a 1-for-1 replacement to the ring posts. Installation is a snap as the posts are pre-installed to the structure while the adapter heads are pre-installed to the wire harness. Installers simply snap heads onto posts to complete wire harness installation. This reduces installation time from ~30+ sec. to less than 5 sec. The Snap 'N Posts are light weight Nylon or Ultem material posts and Nylon adapter heads.



Adhesive Standoff

Use Adhesive Standoffs when you cannot make a hole and need an elevated mounted attachment. Material options of PEEK 150GL30, or GF Ultem. VHB Tape options for applications where wet process is unnecessary saving installation time. Adhesive Standoffs use 10-32 inserts making it compatible with APH Clamps; metric option is also available.



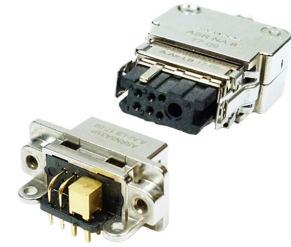
Adhesive Tie Mounts

Use Adhesive Tie Mounts when you need a low profile mount without punching holes in the structure. Made from either GF Ultem, GF PEEK or GF Nylon, Adhesive Tie Mounts can be adhered using VHB Tape or wet processes epoxy. Choose from either rectangular cable tie mounts or smaller square tie mounts, both can be used with any standard MS3367 or equivalent tie down strap.



AS80549 Mil Spec Backshells

AS80549 Mil Spec Backshells offer over 18,000 QPL Backshells that offer strain relief, environmental protection, and EMI/RFI 360 degree shielding at the termination area for virtually any circular connector. AS80549 Mil Spec Backshells are qualified to SAE, AS85049 standards and listed in Quality product list (QPL).



ASR Rectangular Connectors

ASR low profile rectangular connectors are a compact and easy to use interconnect where shielding, sealing, and space, and weight-saving are prime requirements. ASR connectors use MIL-C-39029 contacts, feature a snap-locking mechanism and are available in both male and female versions, as well as PCB (straight and right angle) or crimp contacts.



Bluetooth IFE Module

Bluetooth Low Energy (BLE) modules create an innovative way to enhance the passenger experience with minimal impact to the aircrafts connection architecture. BLE modules utilize the newest capabilities of BLE technology to broadcast live flight information to multiple devices simultaneously. The BLE modules inherently create a personal experience for passengers that will make every flight memorable.



Circular Multi-pole Rhino

This range extension from the Rhino 38999 connector enables more than one contact to be housed within a circular connector shell alongside a pair of HVIL contacts. These connectors are available in cable or panel mounting configurations and contact counts up to 5-pins. Multiple high-current contacts can be housed within one single connection for simplicity and space-saving.



Component Carrier Modules

Solution to easily insert a component (diodes, resistors or fuses inserted) in a cable harness to change a signal or simply repair a damaged wire. Made in overmolding technology, they offer excellent dielectric and sealing (sealing IP66 / IP68 and IP69K) performances, as well as space and weight-saving. Available in 2 versions: mounting on composite or metallic tracks (1765 component carrier modules). In line junctions splices (1119series) available with or without inserted components.



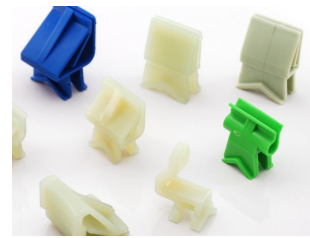
Composite Backshells

Composite Backshells, strain relief & split shield rings are perfect for weight savings. Composite Backshells offer weight reduction, corrosion resistance diminishes vibration. Composite backshells mate with MIL-DTL-38999 III & IV.



Cable Harnessing

Custom designed cables for various advanced air mobility applications that can be utilized in high temperatures and rugged environments. The harness division at Amphenol Pcd is accredited to both the AS9100:D:2016 and ISO 9001:2015 quality assurance standards. Quick-turn prototype services and customization from connector selection to full cable assembly design are offered.



Cable Supports

Cable Supports help guide ventilation conduits through aircraft and vehicles, these composite mounting tracks were designed with strength, stability, and weight reduction in mind. Made with black thermoplastic and conform to ABD031 and FAR25853 flammability standards.



CC1339 & CC5516 Light Clamps

CC1339 & CC5516 Light Clamps are a lightweight alternative to metal clamps, offering a versatile solution for reduced weight (up to 73% saved) installation time and increased cable protection. Quick Installation, overmolded product and pre-locking or pre-mount.



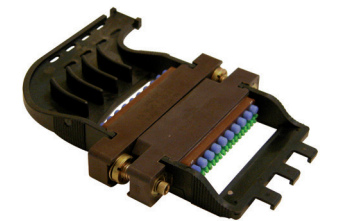
Custom Backshells

A leader in interconnect solutions, we know designers like to have the most flexibility. Amphenol has the flexibility to make any modification on the standard product including the integration of a variety of sensors within the backshell itself.



M24308 Dsub

M24308 Dsub connectors are widely used in in-flight entertainment and communications. 5 shell sizes with 9, 15, 25, 37 & 50 contacts under standard density and 15, 26, 44, 62, 78 and 104 in high density. Supports performance enhancements such as sealing and EMI to meet application needs. M24308 Dsub are widely stocked, better value per pin and allow closer spacing on the panel than circular connectors.



EN3545/1900

EN3545 / 1900, composite sealed rectangular connectors available with various contact arrangements. Includes sizes 22 to 8 crimp removable contacts for Copper and Aluminum cable, common in Mil-DTL-38999 connectors such as Coax, Twinax, Triax and Quadax. Configurable keying and locking posts providing 36 options. Ideal when shielding is not necessary.



EN4165/SIM Modules

Lightweight and modular, EN4165/SIM connectors are fitted with overmolded SIM modules offering best-in-class dielectric and sealing performances. Composite shielded versions for weight saving applications and metallic version for robust applications available. Modules from 30 contacts size 23 (5 Amps) to a single size 8 (up to 80 Amps) Fiber Optics, RF, RJ45, Quadrax among others.



Engine Backshells

Engine Backshells are available in many different types for a wide variety of applications. One of the harshest applications is within the engine and ours are robust enough to work in this extreme environment. We offer Rolls Royce qualified engine backshells (ESC 53,75-77). Custom solutions and configurations are also available for the harshest design requirements.



Fairlead Blocks

Fairlead Blocks were designed to properly secure pipes and tubes throughout their entire length. Fairlead Blocks provide stability against surges and vibration, and developed with material that prevents chaffing. Parts are designed with cored out geometry to help reduce width by up to 20% from traditional rubber blocks.



Lightening Hole Bushing

QuickSNAP Lightening Hole Bushings guide wired bundles through the aircraft's frame and stringers. Significantly reduce installation times and amount of foreign object debris (FOD). Made with smooth edges to reduce wire chaffing, and available in various standard configurations and sizes. Customization is always an option.



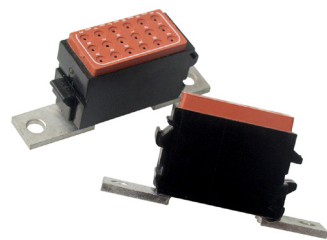
Luminus

Luminus are small, lightweight, sealed, cost-effective connectors are highly reliable and easy to use circular connectors. The bayonet and push-pull style connectors support signal level to medium power (23A) applications. These parts can fly with Altitude Immersion testing to 75k feet. RoHS and REACH compliant.



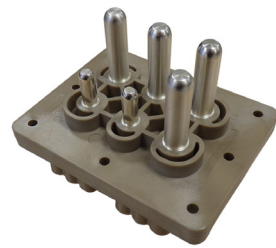
M12883 & Quickmount Relay Sockets

M12883 and Quickmount Relay Sockets are qualified to MIL-PRF-12883 specifications and have an amp range between 2 and 25. Various configurations, featuring ultrasonically bonded interfaces between the dielectric components, eliminating air paths and providing protection against moisture and degradation. Snap into standard aircraft panel cutouts eliminating mounting hardware.



Ground Modules (1758,1174 Circular)

Ground Modules for signal and low current distribution, where sealing, space and weight-saving are prime requirements. For wiring optimization, come in different versions: individual mounting brackets, metallic tracks (1758series) or directly screwed on the structure (1174 Series). Male contacts size 22 to size 12 (1758 series), and male or female size 20 contacts (1174 Series) with or without components.



Ground Power Receptacle

Ground Power Receptacle is currently installed on commercial airliners and is fully intermateable with ground based SAE AS 25486 power plugs. This outlet contains four power pins, including one for neutral, and two smaller pins for power control powers the aircraft while docked at the gate. Various interfaces and lightning protection housings are available.



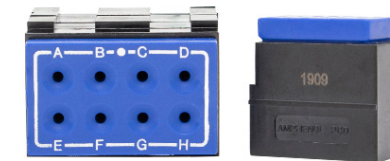
HARP Power

Next Generation of high density modular connector offering a direct Harness-to-Board connection. This ergonomic solution enables fast and easy harness installations. High power version offers 3 contacts 150Amps + 2 signal contacts. Also available in full size 22 signal contacts version, or mixed 22/20/8 contacts sizes.



M81714 Style Lightweight Ground Blocks

Ground Blocks provide lightweight, highest density grounding solutions. Wired connections are environmentally-sealed, providing protection from moisture, spray, and debris. The two-hole flange mount provides a convenient footprint for mounting on airframe and provide up to 21 contacts in less than 1 square inch.



M81714 Style Junction Modules

Series I Terminal Junction Modules and Series II Socket Junction Modules are robust, reliable and performs to M81714 electrical and mechanical standards. Series I uses standard M39029/1 pin contacts. Series II uses M39029/22 socket contacts. Both accommodate 12-26 AWG wires. Mounting rail and installation/termination accessories and customization available.



M81714 Style Splices/Electronic Splices

M81714 Style Splices/Electronic Splices designed to provide a quick and efficient solution to application design wiring requirements and are highly resistant to temperature and fluids. Supplied with a wide variety of diodes, resistors, capacitors, and fuses. Amphenol's electronic solutions allow customers to incorporate system modifications into a wire bundle, avoiding changes in panels or boards.



MagJack Noise Cancelling Jacks

Active-Noise Cancelling (ANC) jacks for keep the system very low power and low weight. MagJack Noise Cancelling Jacks can be electrically isolated from the aircraft power by using compatible headphones that power the noise-cancelling circuit inside the jack. The ANC jacks reduce ambient noise by up to 20dB.



Power Feeder Spacer

Made of Ultem, the Power Feeder Spacer provides a constant spacing between the power feeder harnesses withstanding the higher temperature exposure. The design allows for a six-degree rotation on the power feeder bundle and does not fight against the natural flow of the power feeder. Used as anchor points and secure six bundle positions with diameter of .560in. Smaller spacers are currently available.



Nano Pegasus

Nano-Pegasus is a small, plastic, easy to use connectors designed specifically for sensing, command and control applications where a Micro or Nano Dsub would be used. Nano-Pegasus & Nano-Luminus provide exceptional performance in tight spaces, packing 11 high grade contacts in a shell size 5 housing.



Raptor High Power/High Voltage Circular Connector

Raptor Circular Feedthrough is engineered for High Voltage and High Current Systems in e-flight, e-Vtol and Hybrid applications such as batteries, generators, motors & power distribution units and is ideal for termination of screened power cables. It is designed for applications where once the equipment is installed, it does not require frequent connection and disconnection.



Pegasus

For use in harsh environments, Pegasus builds on the successful Luminus connector with the addition of metal plated EMI/RFI shielding. Small, lightweight, sealed, cost-effective connectors, highly reliable and easy to use circular connectors. Bayonet style connectors support signal level to medium power (23A). Pegasus can fly with Altitude Immersion testing to 75k feet. RoHS/REACH compliant.



Rhino Rectangular Multi-pole

Rhino Rectangular connector series enables more than one high current contact to be housed within a rectangular connector shell alongside a pair of HVIL contacts. Available in cable or panel-to-panel mounting configurations and up to 6 contacts with current rating up to 1000A per contact. Multiple high-current contacts can be housed within one single connection for simplicity and space-saving.



SIM Quick Release plates

Based on legacy EN4165 connectors, SIM QR plates and connectors features a quick disconnection system. Fitted with modules selected from an extensive range of overmolded EN4165 / SIM modules providing multiple contacts sizes and arrangements offering best-in-class dielectric and sealing performances. For use with both power and signal contacts.



SIM Plates

EN4165/SIM plates derived from EN4165 standard connectors. Consists of customer shells fitted with range of EN4165 standard modules. Supports advanced signal and power requirements at a fraction of the space. Customs plates can be integrated at the rear of electronic boxes, or fully replace boxes themselves. Suitable to connectorize boxes or structures and require fewer parts.



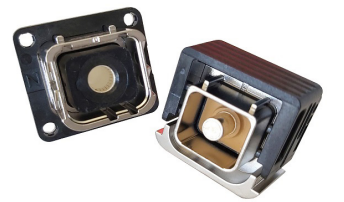
SIM Splice

This modular composite splice provides a reliable and simple connection between two EN4165 / SIM modules. Available with or without cable Clamps, and/or flange, the SIM splice can be fixed on/ under a structure or Feed-through. It can be fitted with the whole range of EN4165 / SIM modules. In-Seat Modular & Flexible Wiring; Quick install interconnect, splicing.



SIM MPO Optical Modules

SIM MPO Optical Modules can be used within the whole range of EN4165 / SIM connectors. Accommodate MT ferrule-type based & standard MTP/MPO multi-fiber connectors which are directly plugged and locked into the module. Parts are easily removed for repairs or replacements. Fiber optics interconnect for use in high speed and or high bandwidth communications.



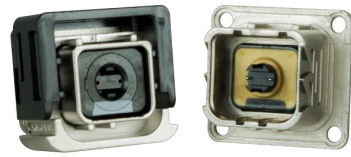
SIM Monomodule

EN4165 / SIM Monomodule is a single module connector, fitted with overmolded SIM modules offering best-in-class dielectric and sealing performances. With lightweight composite shells they are especially suited where weight and space saving is mandatory. Multiple color coding, backshells and accessories available. Available with modules from 30 contacts size 23 (5 Amps) up to 1 contact size 8 (up to 80 Amps).



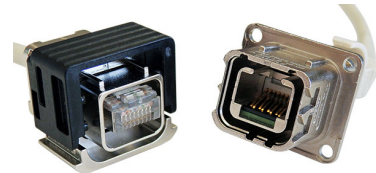
SIMTAC03 Optical Modules

SIMTac03 optical modules fit within the entire range of EN4165 / SIM connector products. These inserts come with 2 MTAC connectors and a strain relief. The recessed MT Ferrule reduces exposure and are finger touch proof. Boots fit round or ribbon fiber. Available in Multi-mode & single mode versions.



SIMTAC08 Optical Modules

SIMTac08 Optical Modules fit within range of EN4165 / SIM connector products. Inserts are made for 1 MT Ferrule packaged within a Size 8 Quadrax contact form factor. Currently two versions are available: EN4165/M38999 cavities & Arinc 600 cavities. For use with a boot or sealed sleeve. Multi-mode (12 optical ways).



SIM RJ45 Cat6 modules

SIM module for RJ45 Cat6a this high speed 10Gb insert module can be used within the entire range of EN4165 / SIM Monomodule connectors. Available for cable-to-cable or right angled cable-to-PCB applications in male or female versions. Rear accessories are also available to provide a sealed connection.



Solaris

Solaris, small, lightweight, sealed, cost-effective connectors are highly reliable and easy to use rectangular connectors. Solaris supports signal level to medium power (23A) applications with scoop-proof contacts. Spring-loaded slide lock mechanism is a snap to use - simply push to lock and slide to unlock. Reverse gender capability - Allows live power connector to be either plug or receptacle. RoHS/REACH compliant.

Pegasus, Solaris, Luminus, Junction Modules, Relay Sockets
produced@amphenolpcd.com

Backshells, Dust Caps, D-Subs; Amphenol Interconnect India
backshells@amphenolpcd.com

Circulars; Amphenol Limited & Amphenol Socapex
circulars@amphenolpcd.com

Cables
cablesales@amphenolpcd.com

IFE Systems
ife_systems@amphenolpcd.com

System Attachments
system_attachments@amphenolpcd.com

SIM; Amphenol AirLB France
sim@amphenolpcd.com



USB IFE Power Modules

USB IFE Power Modules deliver safe and efficient charging to passenger electronic devices (PED). Convert virtually any DC input voltage into the optimal charging power level for the connected PED. Whether the charging modules are for personal devices or critical flight equipment, Amphenol's team of experts deliver on meeting or exceeding performance requirements.



U-Snap Adhesive & Non-Adhesive Clamps

Available in Nylon, PEEK, and Ultem. Aerospace grade VHB tape per 5958FR. Versatile Base geometry for VHB or wet process. Lightweight, metal free design. Color coded grommets for each size. Accommodates multiple sized grommets per housing. Bonded & mounted versions available.

Amphenol Pcd
www.amphenolpcd.com