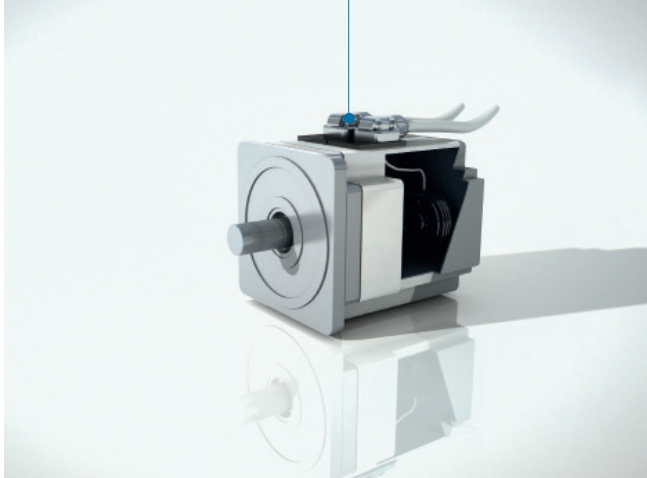


SERVO MOTOR

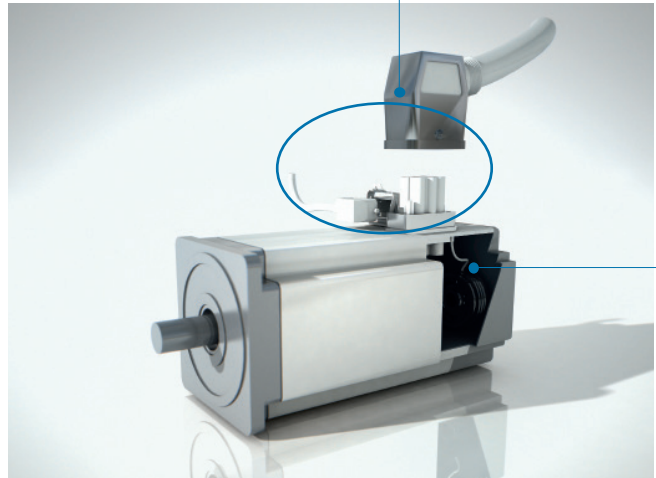
Cheat sheet

Overview

A.4



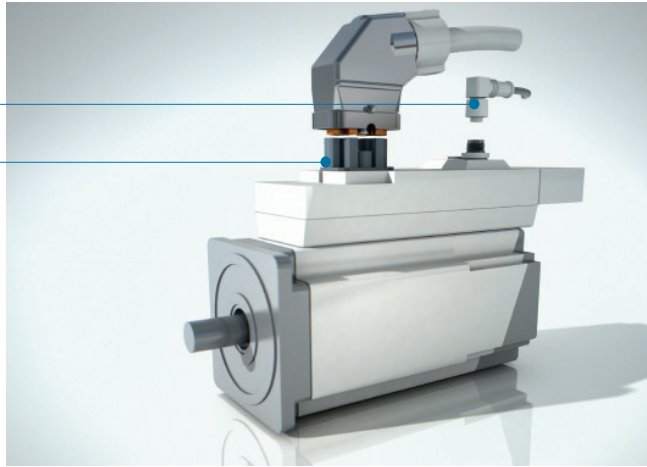
A.3



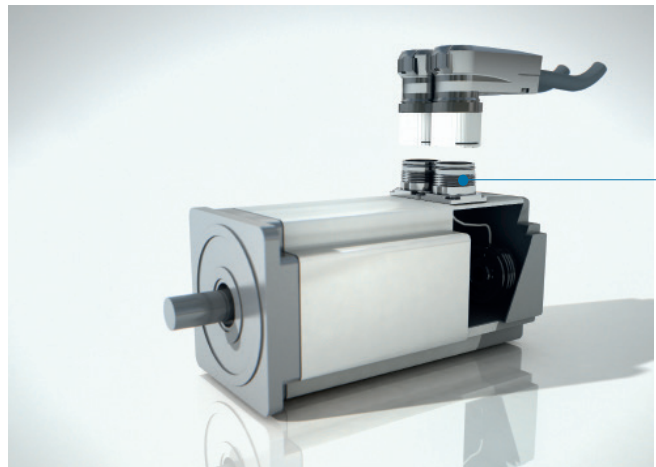
A.5

A.1

A.2



A.3

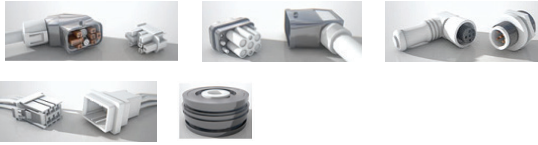


Servo Motor solutions

Servo Motors allow precise control of angular position, velocity and acceleration – important elements in machine operation. Servo Motors are keeping pace with trends in machines, and therefore we see increasing safety functionality within motors and drives. TE Connectivity offers a wide range of motor interconnects for power, signal and data communication in servo motors – including hybrid solutions which integrate all in one connector for additional space saving.

Servo Motor preferred partnumber list

Input/Output



A.1 PROFINET

PREFERRED PN	DESCRIPTION	FULL PARTNUMBER
M8/M12		
M12 MALE 4PIN D-CODE STRAIGHT MOUNTED		3-2271142-2
M12 MALE 4PIN D-CODE SHIELDED 5-8MM		3-2271115-2
M12 FEMALE 4PIN D-CODE STRAIGHT MOUNTED		3-2271145-2
M12 FEMALE 4PIN D-CODE SHIELDED 5-8MM		3-2271121-2
M12 MALE 8PIN X-CODE FIELD INSTALL.		2120952-1
M12 FEMALE 8PIN X-CODE REAR PANEL MOUNT WIRE RECEPTACLE		2271195-1
M12 FEMALE 8PIN X-CODE REAR PANEL MOUNT PCB RECEPTACLE		2232331-1

PROFIBUS

M8/M12		
M12 MALE 4PIN A-CODE STRAIGHT PCB MOUNTED		3-2271140-2
M12 MALE 4PIN A-CODE PANEL MOUNTED WITH WIRES		3-2271134-2
M12 MALE 4PIN A-CODE SHIELDED 5-8MM		3-2271113-2
M12 FEMALE 4PIN A-CODE PANEL MOUNT WIRE RECEPTACLE		3-2271137-2
M12 FEMALE 4PIN A-CODE STRAIGHT PCB MOUNTED		3-2271143-2
M12 FEMALE 4PIN A-CODE STRAIGHT F. INSTALL SHIELDED 6-8MM		3-2271117-2
M12 MALE 5PIN B-CODE STRAIGHT PCB MOUNTED		4-2271141-2
M12 MALE 5PIN B-CODE PANEL MOUNTED WITH WIRES		4-2271135-2
M12 MALE 5PIN B-CODE SHIELDED 5-8MM		4-2271113-2
M12 FEMALE 5PIN B-CODE STRAIGHT PCB MOUNTED		4-2271144-2
M12 FEMALE 5PIN B-CODE STRAIGHT F. INSTALL SHIELDED		4-2271119-2
M12 FEMALE 5PIN A-CODE PANEL MOUNTED WITH WIRES		4-2271138-2
M8 MALE 4PIN STRAIGHT FIELD INSTALL. UNSHIELDED 3.5-5MM		2120954-1
M8 MALE 4PIN PANEL MOUNT, LI 200MM		2120958-1
M8 FEMALE 4PIN STRAIGHT FIELD INSTALL. UNSHIELDED 3.5-5MM		2120956-1
M8 FEMALE 4PIN PANEL MOUNT, LI 200MM		2120959-1

IO LINK

M8/M12		
M12 MALE 5PIN A-CODE STRAIGHT PCB MOUNTED		4-2271140-2
M12 MALE 5PIN A-CODE PANEL MOUNTED WITH WIRES		4-2271134-2
M12 MALE 5PIN A-CODE SHIELDED 5-8MM		4-2271113-2
M12 FEMALE 5PIN A-CODE PANEL MOUNT WIRE RECEPTACLE		4-2271137-2
M12 FEMALE 5PIN A-CODE STRAIGHT PCB MOUNTED		4-2271143-2
M12 FEMALE 5PIN A-CODE STRAIGHT F. INSTALL SHIELDED 6-8MM		4-2271117-2
M8 MALE 5PIN STRAIGHT FIELD INSTALL. UNSHIELDED 3.5-5MM		1-2120954-1
M8 MALE 5PIN PANEL MOUNT, LI 200MM		1-2120958-1
M8 FEMALE 5PIN STRAIGHT FIELD INSTALL. UNSHIELDED 3.5-5MM		1-2120956-1
M8 FEMAL 5PIN E PANEL MOUNT, LI 200MM		1-2120959-1

A.2 RECTANGULAR HYBRID CONNECTORS

MOTORMAN		
HYBRID HOUSING (METAL)		2120320-1
HYBRID HOUSING (PLASTIC)		1-2120319-1
KIT: HOOD, COVER, SCREEN CLAMP (METAL)		2120330-1
KIT: HOOD, COVER, SCREEN CLAMP (PLASTIC)		2120340-1
FEMALE CONTACT MCON 2.8 (2,5MM)		1719840-3
FEMALE CONTACT MCON 2.8 (4,0MM)		1718475-3
FEMALE CONTACT MCON 1.2 (0,35MM)		1452653-2
FEMALE CONTACT MCON 1.2 (0,75MM)		1452656-2
COMMUNICATION FEMALE (HC26.BU.4.C.5.2)		1103427-2
HDP-22 FEMALE CONTACT FOR COMMUNICATION INSERT		1658686-1

A.3 RECTANGULAR HEAVY DUTY CONNECTORS

HDC		
HEAVY DUTY HOOD HG-Q		1103073-2
HEAVY DUTY INSERT HG-Q		1103095-1
HEAVY DUTY POWER MALE CONTACT HSK		2-1108757-1
HEAVY DUTY POWER FEMALE CONTACTS HSK		2-1108756-1
HEAVY DUTY SIGNAL MALE CONTACT HN.D		5-1105050-1
HEAVY DUTY SIGNAL FEMALE CONTACTS HN.D		5-1105051-1

PREFERRED PN DESCRIPTION FULL PARTNUMBER

A.4 DYNAMIC SERIES CONNECTORS

DYNAMIC 3700 SERIES		
3.81MM 1ROW SERVOMOTOR RECEPTACLE KIT		176346-8
SERVOMOTOR CONTACTS		1-175218-2

DYNAMIC 4200 SERIES		
6.35MM 1ROW PANEL HOUSING CTW		1-1747535-4
6.35MM 1ROW RECEPTACLE HOUSING CTW		1-1747276-4
6.35 CTW CONTACT		1747418-2

DYNAMIC 5200 SERIES		
10.16MM 2 ROW HORIZONTAL HEADER THT		1-1123309-2
10.16MM 2ROW RECEPTACLE HOUSING CTW		1-917807-2
10.16MM CTW CONTACT		179956-6

MICRO MOTER ENCODER		
2.00MM 2ROW SERVOMOTOR RECEPTACLE		1747464-1

A.5 ENGINE/E-MOTOR SENSORS

MULTI-COIL RESOLVER (MCR) SENSORS		
RESOLVER		1-747943-5