

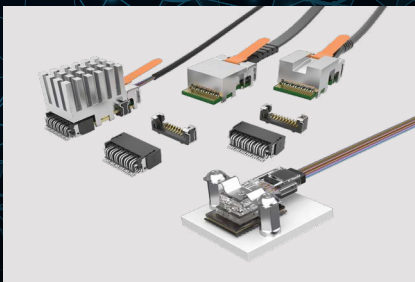


LOW-EARTH-ORBIT SATELLITES

Samtec is helping lead the Technology Renaissance into Space with our unique connector and cable solutions designed especially for Low-Earth-Orbit Satellite applications. For more information, please visit samtec.com/milaero or contact Military@samtec.com.

Considerations when designing LEO Satellites includes:

- Reduced Size, Weight and Cost
- Increased Data Rates, EMI Shielding and Overall Performance



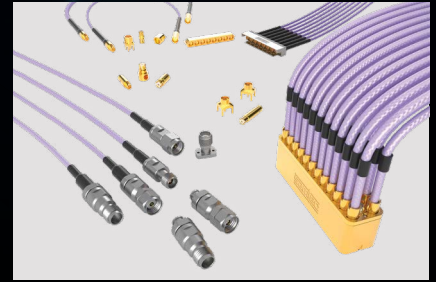
Rugged Optics

Series: CSPO, CSSO, ETUO, ECUO, UEC5, UCC8



High-Speed Cable

Series: ARF6/ARC6, FQSFP



Rugged RF

Series: SMPM, SMP, IP5



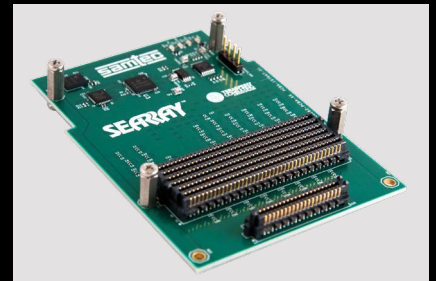
High-Speed Board-to-Board

Series: HSEC6, ERF6/ERM6, SEAF/SEAM, ADF6/ADM6, LPAF/LPAM, NVAF/NVAM



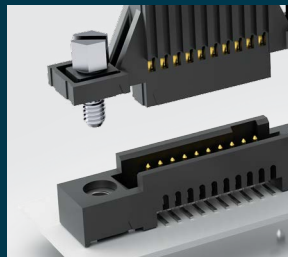
Micro Rugged

Series: SFM/TFM, SFC/TFC, SEM/TEM, LSHM/HLCD, CLP/FTSH, SMM/TMM



Standards

Series: VITA 57, VITA 74, VITA 88, VITA 90, PCIe/104™



RUGGEDIZING SOLUTIONS

COTS, ASP or MAP interconnect solutions with a wide variety of rugged features to ensure quality and durability in any application.

- Jack Screws
- Positive Latching
- Friction Locks
- Retention Pins
- Board Locks
- Weld Tabs
- Guide Posts
- Shielding
- Screw Downs
- Board Standoffs



SEVERE ENVIRONMENT TESTING

Severe Environment Testing (SET) is a Samtec initiative to test products beyond typical industry standards and specifications, many set forth by common requirements for rugged / harsh environment industries. These products undergo additional testing to ensure they are more than suitable for military, space, automotive, industrial and other extreme applications.

Visit samtec.com/SET or contact set@samtec.com for additional information and current available test results.