

DEVICE CONNECTORS

PCB Connectors

May 2018

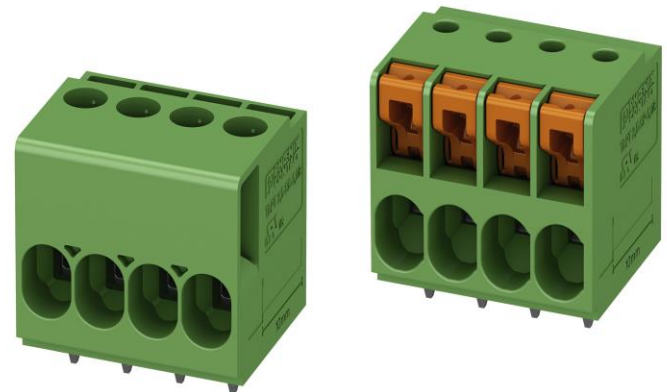
Twin design

Twin Design Print Terminal (TDPT)

Introducing the new Twin Design Print Terminal Block from Phoenix Contact. With this new product, you can now choose between two termination technologies, screw or spring, within the exact same footprint. This makes switching between termination methods easy for manufacturers whose end customers might prefer two different styles. The TDPT allows manufacturers to offer this option to their customers without changing their printed circuit board or their enclosure, as both of the connectors have the same dimensions and footprints.

Features and benefits

- Design flexibility
- Two termination options, same footprint and dimensions
- Product family includes: TDPT 2,5 (5.08-mm pitch), TDPT 4 (6.35-mm pitch), and TDPT 16 (10.16-mm pitch)



Competitor information

Many companies offer a wide range of PCB connectors, but these connectors all have different footprints and dimensions; therefore, the customer has to change the layout of the PCB as well as the enclosure to switch the connector to the wire-termination style they desire. Currently, there are no market competitors who offer a similar product range.

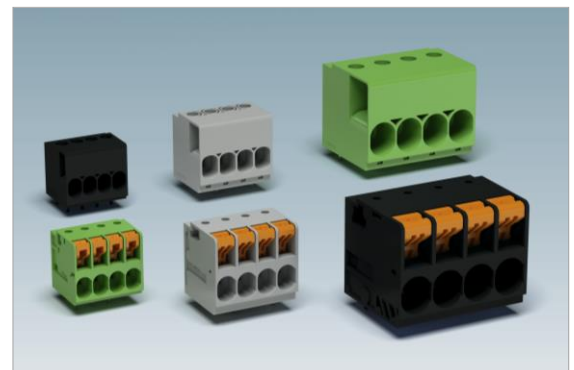
Product nomenclature

Twin Design Print Terminal

TDPT 2,5/ 4-SC-5,08

- 5,08: Pitch Spacing
- SC: Screw, SP - Spring
- 4: Number of Positions
- 2,5: mm² (Max Wire Size)
- TDPT: Twin Design Print Terminal

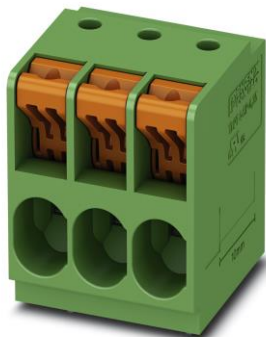
*may have a "ZB" after the pitch which designates Zig-Zag Back pinning starting in the 1st position



DEVICE CONNECTORS

PCB Connectors

Ordering information



Screw termination				
Part number	Description	Poles	Type	Std Pack
1017491	TDPT 2,5/ 2-SC-5,08	2	Screw	50
1017492	TDPT 2,5/ 3-SC-5,08	3	Screw	50
1017493	TDPT 2,5/ 4-SC-5,08	4	Screw	50
1017494	TDPT 2,5/ 5-SC-5,08	5	Screw	50
1017495	TDPT 2,5/ 6-SC-5,08	6	Screw	50
1017496	TDPT 2,5/ 7-SC-5,08	7	Screw	50
1017497	TDPT 2,5/ 8-SC-5,08	8	Screw	50
1017498	TDPT 2,5/ 9-SC-5,08	9	Screw	50
1017499	TDPT 2,5/ 10-SC-5,08	10	Screw	50
1017501	TDPT 2,5/ 11-SC-5,08	11	Screw	50
1017502	TDPT 2,5/ 12-SC-5,08	12	Screw	50
1017514	TDPT 4/ 2-SC-6,35-ZB	2	Screw	50
1017515	TDPT 4/ 3-SC-6,35-ZB	3	Screw	50
1017516	TDPT 4/ 4-SC-6,35-ZB	4	Screw	50
1017517	TDPT 4/ 5-SC-6,35-ZB	5	Screw	50
1017519	TDPT 4/ 6-SC-6,35-ZB	6	Screw	50
1017526	TDPT 16/ 2-SC-10,16-ZB	2	Screw	50
1017527	TDPT 16/ 3-SC-10,16-ZB	3	Screw	50
1017528	TDPT 16/ 4-SC-10,16-ZB	4	Screw	50
1017529	TDPT 16/ 5-SC-10,16-ZB	5	Screw	50
1017530	TDPT 16/ 6-SC-10,16-ZB	6	Screw	50

Spring termination				
Part number	Description	Poles	Type	Std Pack
1017503	TDPT 2,5/ 2-SP-5,08	2	Spring	50
1017504	TDPT 2,5/ 3-SP-5,08	3	Spring	50
1017505	TDPT 2,5/ 4-SP-5,08	4	Spring	50
1017506	TDPT 2,5/ 5-SP-5,08	5	Spring	50
1017507	TDPT 2,5/ 6-SP-5,08	6	Spring	50
1017508	TDPT 2,5/ 7-SP-5,08	7	Spring	50
1017509	TDPT 2,5/ 8-SP-5,08	8	Spring	50
1017510	TDPT 2,5/ 9-SP-5,08	9	Spring	50
1017511	TDPT 2,5/ 10-SP-5,08	10	Spring	50
1017512	TDPT 2,5/ 11-SP-5,08	11	Spring	50
1017513	TDPT 2,5/ 12-SP-5,08	12	Spring	50
1017521	TDPT 4/ 2-SP-6,35-ZB	2	Spring	50
1017522	TDPT 4/ 3-SP-6,35-ZB	3	Spring	50
1017523	TDPT 4/ 4-SP-6,35-ZB	4	Spring	50
1017524	TDPT 4/ 5-SP-6,35-ZB	5	Spring	50
1017525	TDPT 4/ 6-SP-6,35-ZB	6	Spring	50
1017531	TDPT 16/ 2-SP-10,16-ZB	2	Spring	50
1017532	TDPT 16/ 3-SP-10,16-ZB	3	Spring	50
1017533	TDPT 16/ 4-SP-10,16-ZB	4	Spring	50
1017534	TDPT 16/ 5-SP-10,16-ZB	5	Spring	50
1017535	TDPT 16/ 6-SP-10,16-ZB	6	Spring	50