

Industrial Cabinet Connectivity

September 2020

PTFIX 6X10mm²

The PTFIX family continues to grow!

PTFIX has been a very successful product line, providing simple and fast distribution solutions in hundreds of variations. PTFIX's best features are its compact size, perfect modularity, and the wide variety of options in colors, sizes, and configurations.

As it has been for the past three years, the PTFIX family continues to grow. This release is smaller than usual, part number-wise, but we are now introducing PTFIX 10!



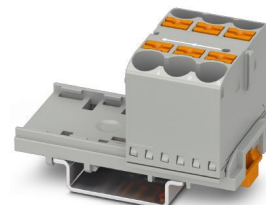
Yes, there is already a version of PTFIX that includes a 10 mm² feed-in contact, but that is technically part of the PTFIX 4 mm² family. The new group of PTFIX 10 blocks are all 10 mm² contacts, not just a feed-in. This niche group of PTFIX products is designed for situations where a larger wire size is needed for multiple contacts. Although physically it is slightly larger than the current PTFIX blocks, the PTFIX 10 blocks are still very compact compared to similar offerings, and still include easy mounting flexibility for tight spaces.

What is offered...

- 6-position 10 mm² contacts
- Available in Gray, Blue, Red, Green, and Black
- Mounting options include flange/panel, DIN rail, and adhesive

Technical data...(Per UL)

- 600 V
- 60 A
- 20-6 AWG



Ordering information

PN	Description	List price	Discount code
1082387	PTFIX 6X10/S GY	\$3.42	B02
1082388	PTFIX 6X10/S BU	\$3.42	B02
1082389	PTFIX 6X10/S RD	\$3.42	B02
1082391	PTFIX 6X10/S GN	\$3.42	B02
1082395	PTFIX 6X10/S BK	\$3.42	B02
1082403	PTFIX 6X10/S-NS35 GY	\$4.10	B02
1082404	PTFIX 6X10/S-NS35 BU	\$4.10	B02
1082405	PTFIX 6X10/S-NS35 RD	\$4.10	B02
1082407	PTFIX 6X10/S-NS35 GN	\$4.10	B02
1082411	PTFIX 6X10/S-NS35 BK	\$4.10	B02

INDUSTRIAL COMPONENTS

■ Industrial Cabinet Connectivity

1082479	PTFIX 6X10/S-NS35A GY	\$4.10	B02
1082480	PTFIX 6X10/S-NS35A BU	\$4.10	B02
1082481	PTFIX 6X10/S-NS35A RD	\$4.10	B02
1082483	PTFIX 6X10/S-NS35A GN	\$4.10	B02
1082486	PTFIX 6X10/S-NS35A BK	\$4.10	B02
1082492	PTFIX 6X10/S-G GY	\$4.10	B02
1082493	PTFIX 6X10/S-G BU	\$4.10	B02
1082494	PTFIX 6X10/S-G RD	\$4.10	B02
1082496	PTFIX 6X10/S-G GN	\$4.10	B02
1082499	PTFIX 6X10/S-G BK	\$4.10	B02

Supporting materials

www.phoenixcontact.com/ptfix

Contact information

Cory Myer
Product Marketing Specialist
cmyer@phoenixcontact.com
717-635-5938

Alan Sappé
Product Marketing Manager
asappe@phoenixcontact.com
717-265-4943



Certain restrictions apply. Go to www.phoenixcontact.com/LLW to review the terms and conditions.

© PHOENIX CONTACT
P.O. Box 4100, Harrisburg, PA 17111-0100
Phone: 717-944-1300 | Fax: 717-944-1625
Technical Service: 800-322-3225
E-mail: info@phoenixcon.com
Website: www.phoenixcontact.com

This document is for INTERNAL USE ONLY by Phoenix Contact employees and distributors. While it is permissible to share general product information (product description, features, benefits, part numbers, etc.), it is not permissible to post or publish confidential/proprietary information (i.e. trade secrets, prices, competitor information, or sales/marketing tips) or otherwise distribute it externally. If you have a specific question about what information may be published, please contact the appropriate product marketing specialist.