

DEVICE CONNECTORS

PCB Connectors

March 2019

LPC(H)6

Levered Power Combicon (Hybrid)

Introducing the new lever-actuated LPC PCB connectors from Phoenix Contact. Until now, no lever-operated PCB connectors have been available in a 7.62-mm pitch. The orange lever makes wiring fast and easy for installers – no tools are required. The mating header has been redesigned to meet the increased touch-proof requirements of IEC/UL 61800-5-1.

To support the industry trend toward signal and power in the same connector, Phoenix Contact is pleased to offer our new LPC(H) hybrid product. Up to five power connections and six signal connections are now possible in one connector. By combining signal and power in one connector, individual connectors can be eliminated, saving space and cost in your application.

Features and benefits

- Intuitive operation
- No torquing specifications due to spring technology
- Tool-free termination and release
- Time-saving spring termination technology
- Hybrid combines power and signal connectors in one PCB terminal block
- Push-in capability for solid or ferruled wire

Target markets

- Industrial applications
- Telecommunications
- Automation technology
- Measurement and control
- Drive technology
- Transportation

Possible applications for LPC(H) 6:

- Servo drives
- Frequency inverters

Nomenclature

L = Levered

PC = Power Combicon

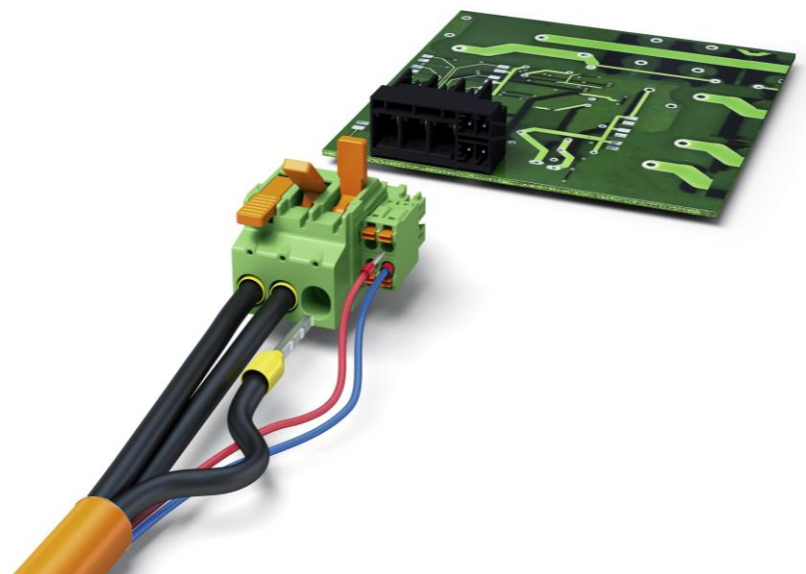
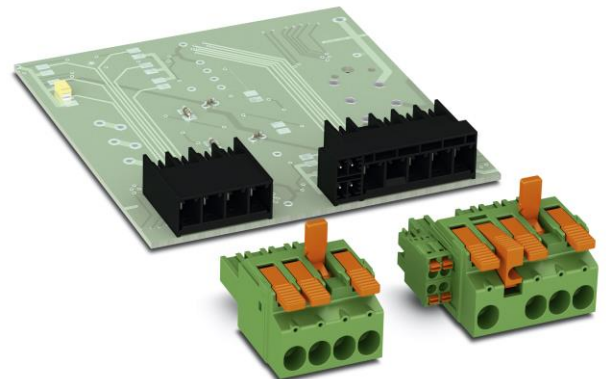
H = Hybrid

ST= Plug

STL_= Plug with lever in the _ position

G= Header

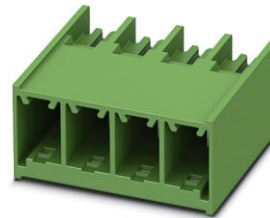
GL_= Header with lever in the _ position



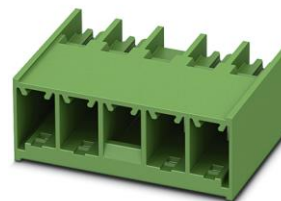
DEVICE CONNECTORS

PCB Connectors

Ordering information



Standard			
Plugs		Headers	
1716921	LPC 6/ 2-ST-7,62	1097707	PC 6/ 2-G-7,62 BK
1716922	LPC 6/ 3-ST-7,62	1097711	PC 6/ 3-G-7,62 BK
1716923	LPC 6/ 4-ST-7,62	1097713	PC 6/ 4-G-7,62 BK
1716925	LPC 6/ 5-ST-7,62	1717019	PC 6/ 5-G-7,62
1716926	LPC 6/ 6-ST-7,62	1717021	PC 6/ 6-G-7,62



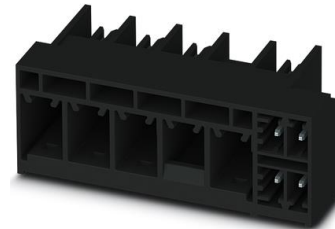
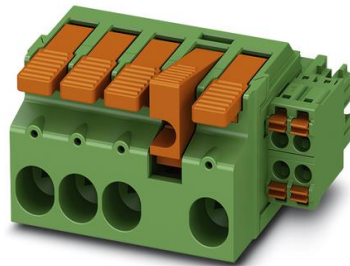
Standard with Latch				
Plugs		Headers		Description
1716930	LPC 6/ 2-STL2-7,62	1717025	PC 6/ 2-GL2-7,62	Latch in the 2nd position
1716931	LPC 6/ 3-STL2-7,62	1717027	PC 6/ 3-GL2-7,62	Latch in the 2nd position
1716941	LPC 6/ 4-STL3-7,62	1717035	PC 6/ 4-GL3-7,62	Latch in the 3rd position
1716942	LPC 6/ 5-STL3-7,62	1717036	PC 6/ 5-GL3-7,62	Latch in the 3rd position
1716948	LPC 6/ 6-STL4-7,62	1717043	PC 6/ 6-GL4-7,62	Latch in the 4th position

DEVICE CONNECTORS

PCB Connectors



Plugs		Hybrid		Description
Plugs		Headers		Description
1716952	LPCH 6/ 3+4-ST-7,62	1717103	PCH 6/ 3+4-G-7,62	3 power connections, 4 signal connections
1716954	LPCH 6/ 3+6-ST-7,62	1717104	PCH 6/ 3+6-G-7,62	3 power connections, 6 signal connections
1716955	LPCH 6/ 4+4-ST-7,62	1717105	PCH 6/ 4+4-G-7,62	4 power connections, 4 signal connections
1716956	LPCH 6/ 4+6-ST-7,62	1717106	PCH 6/ 4+6-G-7,62	4 power connections, 6 signal connections
1716957	LPCH 6/ 5+4-ST-7,62	1717108	PCH 6/ 5+4-G-7,62	5 power connections, 4 signal connections
1716958	LPCH 6/ 5+6-ST-7,62	1717109	PCH 6/ 5+6-G-7,62	5 power connections, 6 signal connections



Plugs		Hybrid with Latch		Description
Plugs		Headers		Description
1716970	LPCH 6/ 3+4-STL3-7,62	1717119	PCH 6/ 3+4-GL3-7,62	3 power connections, 4 signal connections with latch in the 3rd position
1716971	LPCH 6/ 3+6-STL3-7,62	1717120	PCH 6/ 3+6-GL3-7,62	3 power connections, 6 signal connections with latch in the 3rd position
1716987	LPCH 6/ 4+4-STL4-7,62	1054545	PCH 6/ 4+4-GL4-7,62	4 power connections, 4 signal connections with latch in the 4th position
1716989	LPCH 6/ 4+6-STL4-7,62	1717138	PCH 6/ 4+6-GL4-7,62	4 power connections, 6 signal connections with latch in the 4th position
1717003	LPCH 6/ 5+4-STL5-7,62	1717151	PCH 6/ 5+4-GL5-7,62	5 power connections, 4 signal connections with latch in the 5th position
1717005	LPCH 6/ 5+6-STL5-7,62	1717153	PCH 6/ 5+6-GL5-7,62	5 power connections, 6 signal connections with latch in the 5th position