

LTE/5G Cellular External Antennas

molex

Off-the-shelf LTE/5G Antennas, designed for 2G/3G/4G/5G modules and devices, offer superior coverage and reliability with high efficiency and peak gain, making them ideal for various wireless and networking applications

Features and Advantages



LTE/5G Cellular External Antenna, Hinged

Antenna connectors in straight and folded modes with SMA-J and RP-SMA-J mounting options
Offers design flexibility

171.50 by 19.40mm (Straight mode)
151.00 by 19.40mm (Folded mode)

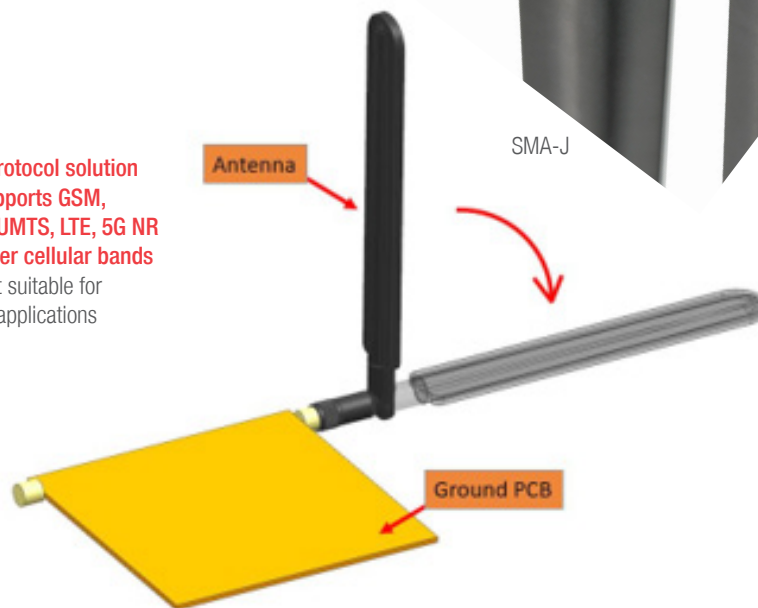
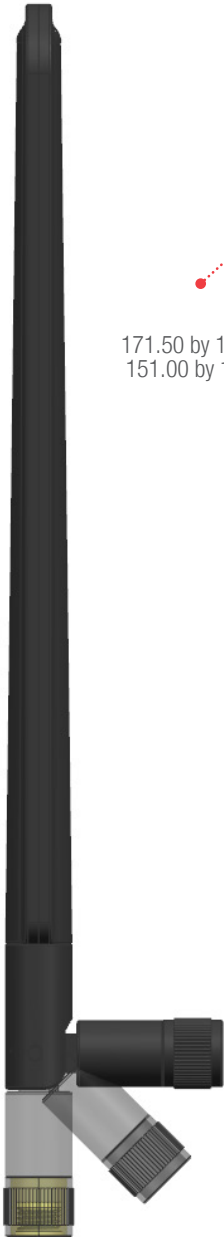
Multi-protocol solution that supports GSM, CDMA, UMTS, LTE, 5G NR and other cellular bands
Makes it suitable for diverse applications

Antenna

SMA-J

RP-SMA-J

Ground PCB



LTE/5G Cellular External Antennas



Features and Advantages

Hinge joint allows 90° rotation on the vertical plane and SMA-J connector allows 180° rotation on the horizontal plane

Provides excellent directional coverage

High efficiency and peak gain for all major cellular bands

Provides strong and stable wireless connection



LTE/5G Antennas, Hinge type



LTE/5G Antennas

Markets and Applications

Connected Home

- Security and surveillance
- Home automation
- Home streaming
- Entertainment
- Smart appliances
- Energy and utilities

IoT

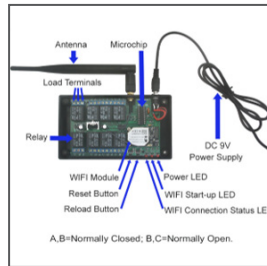
- Wireless solutions

Telecommunications/Networking

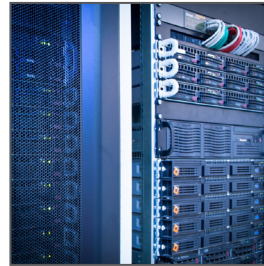
- Infrastructure/Networking

Commercial Vehicles

- Networking



Wi-Fi Module



Networking



Security and Surveillance

Specifications

	213523		214429			
	<i>REFERENCE INFORMATION</i>					
Packaging	PET bag					
Mates With	SMA jack receptacle					
Designed In	Millimeters					
RoHS	Yes					
	<i>ELECTRICAL</i>					
Frequency	698-960MHz	1.71-2.69GHz	698-960MHz	1.71-2.69GHz	3.3-4.2GHz	4.4-5GHz
RF Power (Watt)	2.0					
Return Loss (dB)	<-5	<-10	<-5	<-10	<-5	<-5
Average Total Radiation Efficiency	>55%	>70%	>55%	>70%	>60%	>55%
Peak Gain (dBi)	1.6	5.5	1.6	5.5	3.6	3.5
Impedance (Ohms)	50					
	<i>MECHANICAL</i>					
	Refer to product specifications					
	<i>PHYSICAL</i>					
Size (mm)	171.50 by 19.40 (straight mode)					
	151.00 by 19.40 (folded mode)					
Material	Refer to sales drawings					
Operating Temperature (°C)	-40 to +85					

Ordering Information

Series No.	Description	Type
214429	5G External Antenna	Hinged
213523	LTE Antenna	

www.molex.com/link/wifi-external.html

Molex is a registered trademark of Molex, LLC in the United States of America and may be registered in other countries; all other trademarks listed herein belong to their respective owners.