

HARWIN

CONNECT TECHNOLOGY
WITH CONFIDENCE



HIGH RELIABILITY
WITH SUPREME
PERFORMANCE



INNOVATIVE
DESIGNS FOR
EASY ASSEMBLY



DEPENDABLE
CONNECTIVITY
ACROSS THE BOARD

HRI
RANGE

EZi
RANGE

BBi
RANGE

PRODUCTS IN ACTION - BBi



// WWW.HARWIN.COM

HARWIN

PRODUCTS IN ACTION

JTAG SPRING CONTACT CONNECTION

Application:

FPGA Development Board.

Background:

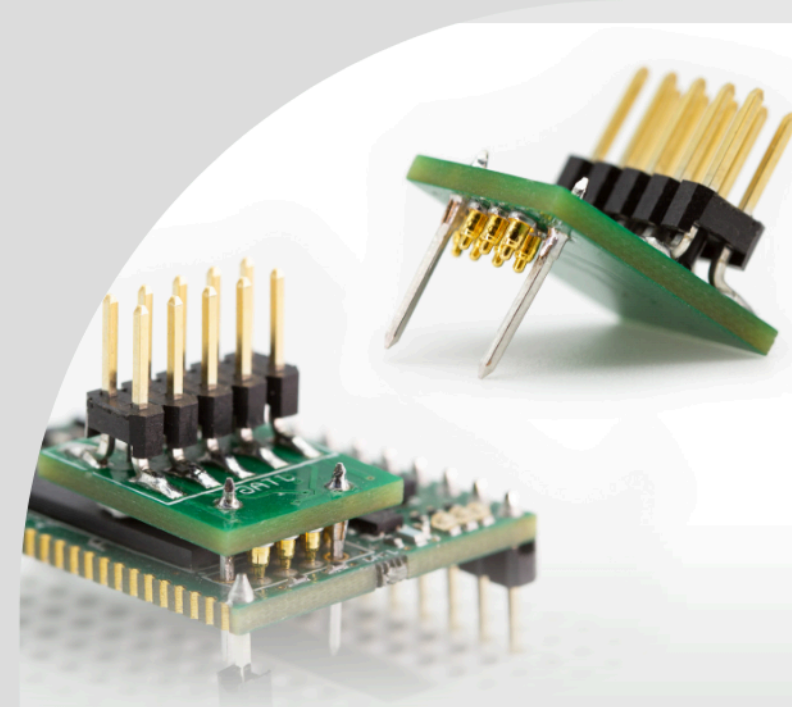
The customer builds encrypted plug-and-play hardware security modules compatible with Raspberry Pi and Arduino computers.

The Challenge:

PCB space is a limiting factor, so a JTAG connector would be supplied as a daughterboard. The connection between the JTAG interface board and the module PCB had to be compact, easy to assemble and readily available.

Harwin Solution:

The module PCB will have a series of staggered contact areas, and the JTAG board is fitted with SMT mounted pogo pins for interface between the 2 boards. The other side of the JTAG board has an SMT pin header for the JTAG interface.



HARWIN

PRODUCTS IN ACTION

ROBOTIC ARM

Application:

Collaborative robots for industrial platforms.

Background:

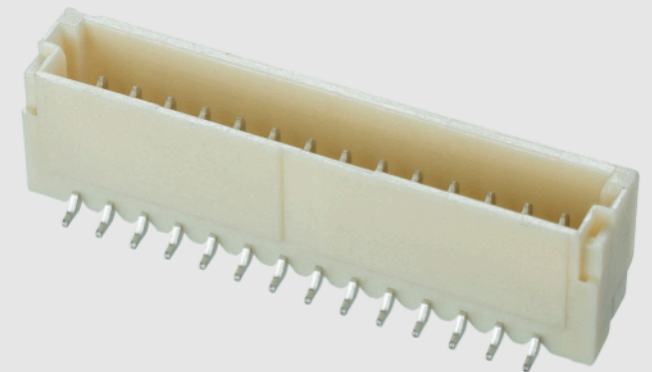
Fine pitch connections required to save space on PCBs, capable of low current data signals and polarized for easy assembly.

The Challenge:

To meet space and cost criteria, with connections designed for manufacture – polarization and shrouding built in for fast, simple assembly.

Harwin Solution:

1mm pitch board-to-cable connectors, polarized and shrouded. Easy to mate, connects in only one direction.



HARWIN

PRODUCTS IN ACTION

AIR CIRCUIT BREAKERS & MOTOR PROTECTION RELAYS

Application:

Industrial power, drives & controls.

Background:

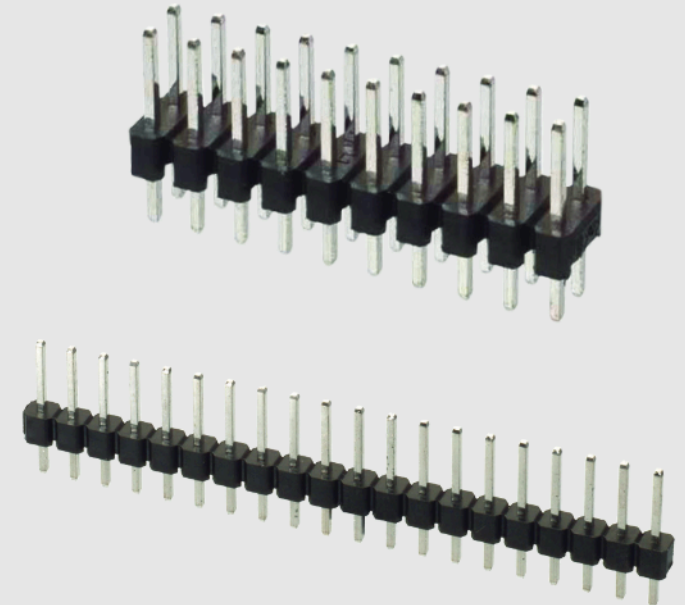
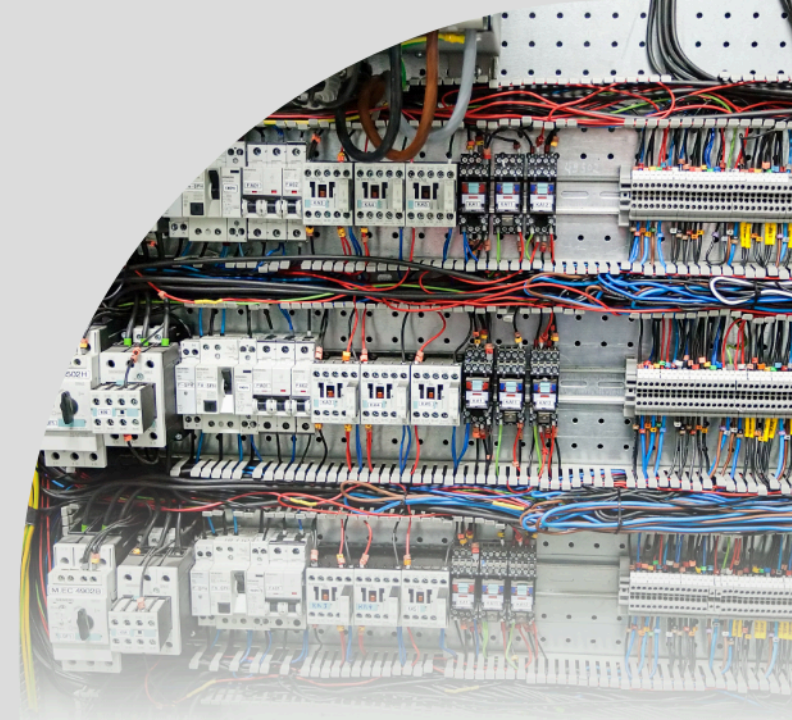
Commercially sensitive power control systems for various industrial machinery and facilities.

The Challenge:

The customer was looking for good quality pin headers for use on the internal PCBs for the control units, without compromising on cost.

Harwin Solution:

M20 pin headers (at 2.54mm/0.1" pitch) meet quality and performance parameters, as well as being cost-effective connectors.



HARWIN

PRODUCTS IN ACTION

MOTOR CONTROLLER FOR REFRIGERATION UNITS

Application:

Control PCB for compressor/alternator management.

Background:

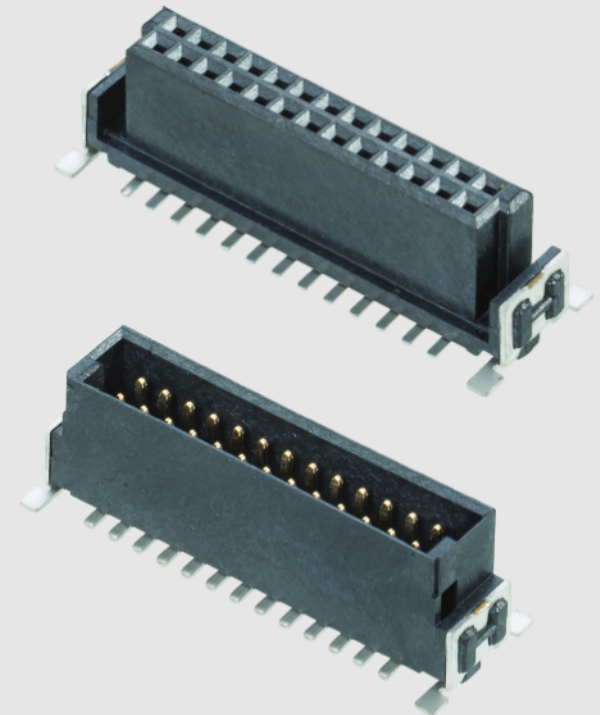
Board-to-board connection for industrial-level environments, part of the management system attached to low-temperature or temperature control systems.

The Challenge:

Customer needed a compact durable connection suitable for a number of end products and markets, with enough vibration resistance for a commercial coach AC system.

Harwin Solution:

Archer Kontrol is the right combination of durable industrial connection in a compact package, with commercial-level pricing and supplied ready for automated assembly.



HARWIN

PRODUCTS IN ACTION

EV CHARGING STATION

Application:

External units for public parking bays.

Background:

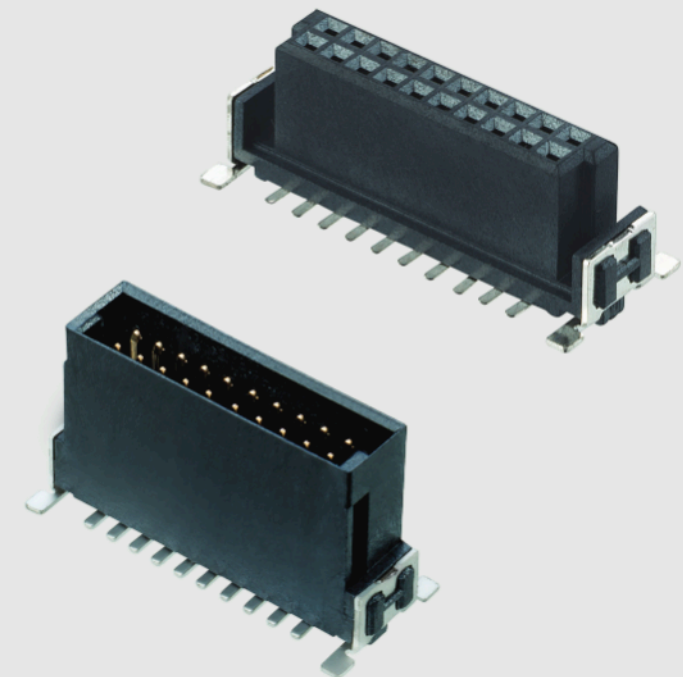
Rugged design required for long term environmental exposure such as heat, cold and humidity. Easy maintenance also a factor.

The Challenge:

The customer needed a better solution for a long-term connection, one that would be more durable over time and with continual external temperature variations. Board-to-board spacing was also a factor.

Harwin Solution:

Archer Kontrol delivered the right level of performance and quality, capable of long-term consistent durability and cost-effective specifications – and at the right mated height.



HARWIN

PRODUCTS IN ACTION

ALL-IN-ONE VENTILATOR UNIT

Application:

Modular ventilation unit with built-in screen.

Background:

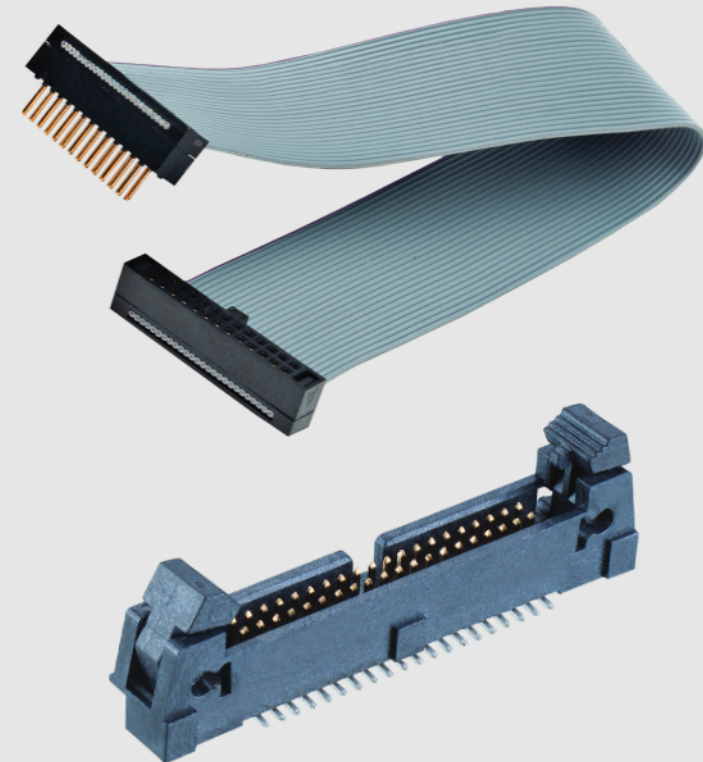
The ventilator provides total care and monitoring in one portable unit, designed to stay with the patient through attendance, transport, care and ward transfers. Continuous operation requires quality components.

The Challenge:

Flat, flexible connections are required within each module of the ventilator unit. Space and weight are critical due to the portability requirements.

Harwin Solution:

Archer IDC connectors provide a quality connection system, including a low profile ribbon cable and surface mount PCB connectors with latches. Quality manufactured standard products provide for a fast response to recent COVID-19 demands.



HARWIN

PRODUCTS IN ACTION

EV INVERTER

Application:

Electric Vehicle drive system.

Background:

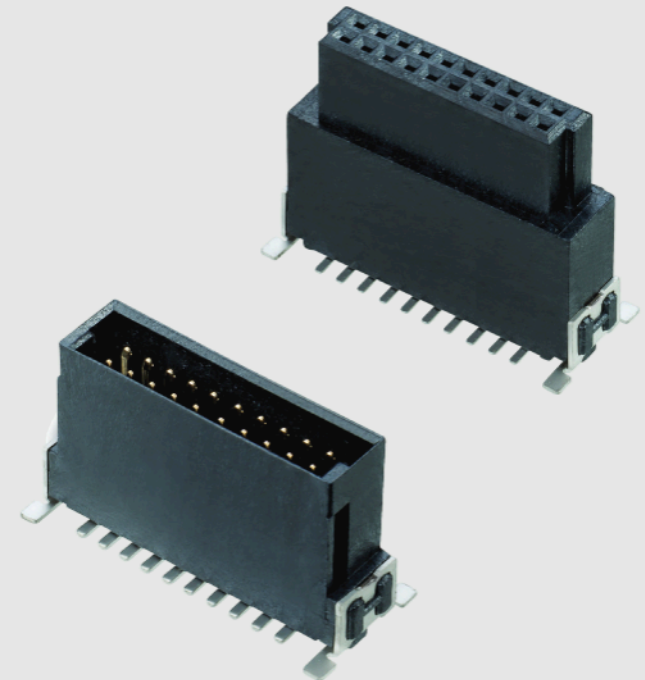
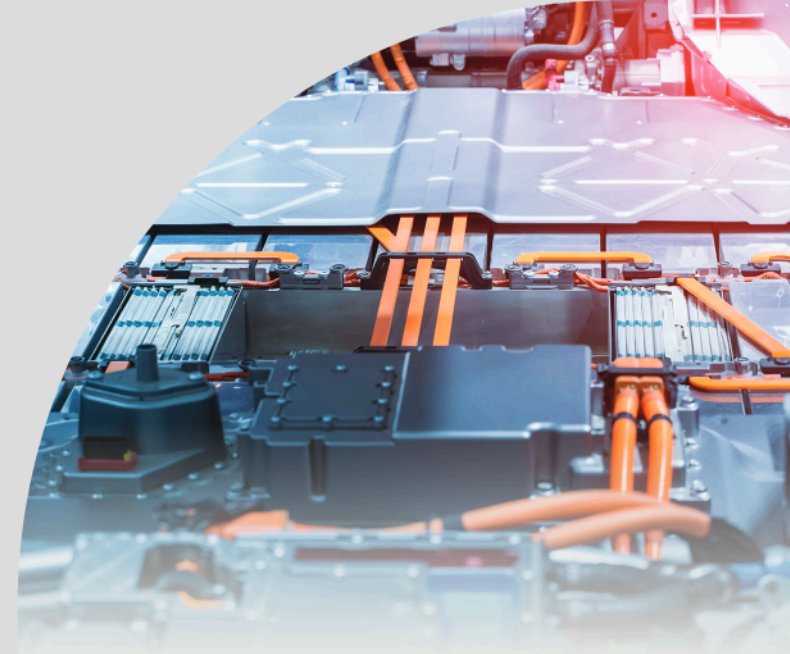
The inverter converts the DC battery power to AC for the car's electric motor. The control boards in this unit require board-to-board connections, durable in nature, with good temperature range and commercial pricing.

The Challenge:

The customer required a dependable supply of durable industrial connectors, with competitive pricing and long-term reliability.

Harwin Solution:

Archer Kontrol is rated up to 125°C, and is rated for vibration resistance. The durable industrial connector gives high performance at the right price level for automotive.



HARWIN

CONNECT TECHNOLOGY
WITH CONFIDENCE



HIGH RELIABILITY
WITH SUPREME
PERFORMANCE



INNOVATIVE
DESIGNS FOR
EASY ASSEMBLY



DEPENDABLE
CONNECTIVITY
ACROSS THE BOARD

HRI
RANGE

Ezi
RANGE

BBI
RANGE

FOR FURTHER INFORMATION PLEASE CONTACT:

Europe, Middle East & Africa

E: technical@harwin.com

Americas

E: technical-us@harwin.com

Asia Pacific

E: technical-asia@harwin.com

// WWW.HARWIN.COM

