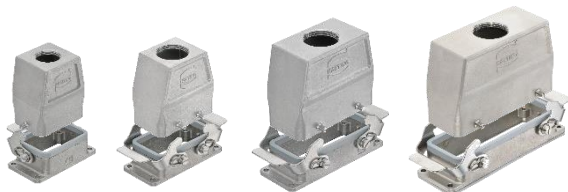


# Han<sup>®</sup> INOX – Hoods & Housings



Pushing Performance



## Description

We are pleased to announce a new addition to the Han INOX<sup>®</sup> series. The new Han INOX<sup>®</sup> housing sizes are made from high-grade stainless steel and predestined for the use in challenging applications.

## Links to Other Materials

- [E-Shop Info](#)

## Specs

- Standard 24B sizes panel cutout
- High grade stainless
- IP65
- NEMA Type 4/4x/12
- -40C...+125C
- DNV Approved
- RoHS Compliant
- Double Lever
- UL 1977

## Markets

- Machinery
- Automation
- Robotics
- Energy

## Applications

- Washdown environments
- Control cabinets
- Distribution Boxes
- Off-shore equipment
- Maritime control and power systems
- Chemical industries

## Feature

- High grade stainless steel
- FPM Seals

## Advantage

- Extreme strength and corrosion resistance
- UV resistance

## Benefit

- Reliability over long period of time in harsh environments
- Outdoor use possibilities