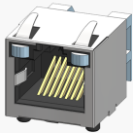


### About Amphenol Commercial Products

Amphenol's commercial connector products are used in a variety of end user applications including networking, telecom, server & computer, storage & HDD, consumer electronics and entertainment, professional audio & Industrial & Military/Aerospace.

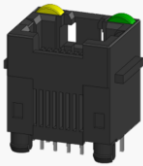
### Related Products

#### RJSSE

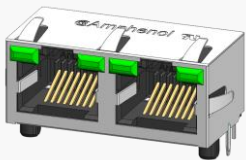


P/N RJSSE-5381 SHOWN SINGLE PORT, 8 POSITION, WITH SHIELD AND LIGHT PIPE

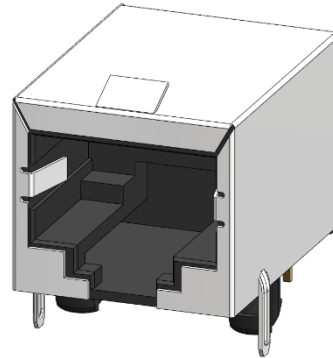
#### RJHSE



P/N RJHSE-3081 SHOWN SINGLE PORT VERTICAL MOUNT, NO SHIELD, WITH LEDs



P/N RJHSE-5385-02 SHOWN TWO PORT REGULAR MOUNT, WITH SHIELD AND LEDs



P/N FRJAE-418 SHOWN SINGLE PORT, 8 POSITION, WITH FERRITE FILTER AND SHIELD (FRONT TABS)

### OVERVIEW

This product specification defines the general use and performance parameters for Amphenol's FRJAE series of shielded and filtered modular jacks.

Availability: Single and multiport versions available with filter and shielding options.

### USAGE

The FRJAE shielded and filtered modular jacks supports Ethernet Protocols. Shielding available as well as filtering with the use of a high resistivity, high impedance Ferrite block for superior EMC performance.

### APPLICATIONS

Intended for use in applications such as:

#### Data

- Storage
- Servers
- Routers
- Switches
- Hubs

#### Networking & Telecom

- 5G Wireless
- Telephones
- Modems
- Fax Machines

#### Consumer Goods

- Security Systems
- Set Top Boxes
- Video Game Systems
- PCs, Laptops
- Copiers, Printers

#### Medical

- Analysis Equipment
- Mass Spectrometers

#### Industrial and Instrumentation

- Uninterruptible Power Supply (UPS)
- ATMs
- Vending Machines
- POS Terminals
- Industrial IoT Platforms

## About Amphenol Commercial Products

Amphenol's commercial connector products are used in a variety of end user applications including networking, telecom, server & computer, storage & HDD, consumer electronics and entertainment, professional audio & Industrial & Military/Aerospace.

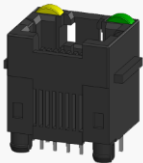
## Related Products

### RJSSE

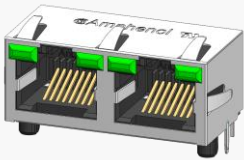


P/N RJSSE-5381 SHOWN SINGLE PORT, 8 POSITION, WITH SHIELD AND LIGHT PIPE

### RJHSE



P/N RJHSE-3081 SHOWN SINGLE PORT VERTICAL MOUNT, NO SHIELD, WITH LEDs



P/N RJHSE-5385-02 SHOWN TWO PORT REGULAR MOUNT, WITH SHIELD AND LEDs

## ELECTRICAL CHARACTERISTICS

<b>Contact Resistance</b>	20 mΩ max
<b>Insulation Resistance</b>	500 MΩ minimum at 500V DC for 2 minutes max
<b>Current Rating</b>	1.5 Amps per contact
<b>Voltage Rating</b>	125 Volts AC
<b>DWV</b>	1000 VAC, 60 Hz. 1 min

Supports PoE, PoE+, and PoE++ per IEEE PoE standards  
IP20 rated per IEC 60529

## MECHANICAL CHARACTERISTICS

<b>Mating Connector Insertion Force</b>	5.0 lbs maximum
<b>Mating Connector Pull Retention Force</b>	20.0 lbs minimum
<b>Durability</b>	750 mating and unmating cycles for 50μ" gold plating
<b>Recommended Soldering Temperature</b>	Wave soldering peaked at 260°C for 5 seconds maximum
<b>Operating Temperature</b>	-40°C to +70°C

UL File #: E135615

Suitable for IR Reflow

## MATERIAL REQUIREMENTS

FRJAE connectors are RoHS compliant.

Unless otherwise specified, the materials for each component shall be:

<b>Insulator</b>	High Temp thermoplastic, flammability rating UL 94V-0
<b>Contacts</b>	-Phosphor Bronze hard temper with gold thickness options (6μ", 15μ", 30μ", 50μ") over 50μ" minimum Nickel on contact mating area -100μ" minimum matte tin plating on soldering tail
<b>Shield</b>	Copper alloy; Nickel plated with pure tin dipped tail
<b>Filter</b>	High Impedance, High Resistivity Ferrite block

## About Amphenol Commercial Products

Amphenol's commercial connector products are used in a variety of end user applications including networking, telecom, server & computer, storage & HDD, consumer electronics and entertainment, professional audio & Industrial & Military/Aerospace.

## AVAILABLE DOCUMENTS

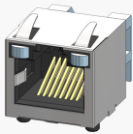
Below is a list of the most popular standard sales drawings:

*Contact our website, sales, or an authorized Amphenol representation for additional drawings.*

<b>FRJAE-408-04</b>	Four ports, through-hole, non-shielded
<b>FRJAE-666</b>	Single port, through-hole, filtered with rear tab shield
<b>FRJAE-438-04</b>	Four port, through-hole, shielded with on-filtered front tab
<b>FRJAE-488</b>	Single port, through-hole, shielded with rear PCB tabs

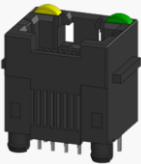
## Related Products

### RJSSE

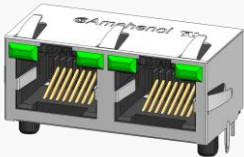


P/N RJSSE-5381 SHOWN SINGLE PORT, 8 POSITION, WITH SHIELD AND LIGHT PIPE

### RJHSE



P/N RJHSE-3081 SHOWN SINGLE PORT VERTICAL MOUNT, NO SHIELD, WITH LEDs



P/N RJHSE-5385-02 SHOWN TWO PORT REGULAR MOUNT, WITH SHIELD AND LEDs

Amphenol Canada Corp.  
605 Milner Avenue  
Toronto, Ontario, Canada M1B 5X6

www.amphenolcanada.com (www.amphenol-icc.com)  
(416) 291-4401  
sales@amphenolcanada.com

Copyright © Amphenol Corporation 2018 · All rights reserved

Page 3 of 3

**Amphenol**