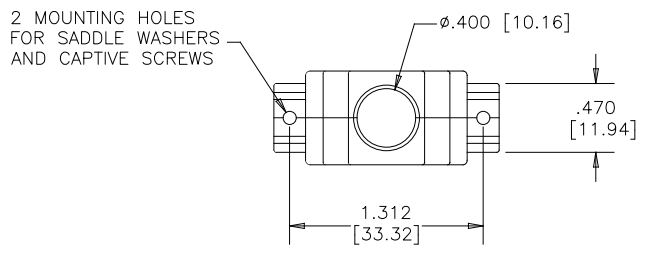
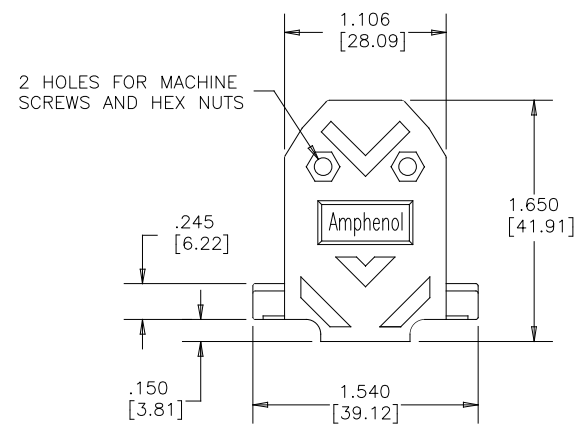
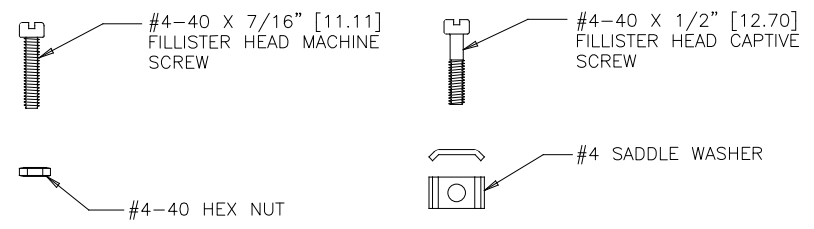


REVISIONS			
REV	DESCRIPTION, ECN, EAR NO.	DATE	APP'D
B	PRODUCT DRAWING (EAR 14259)	APR22/14	K.L.
C	PRODUCT DRAWING (EAR 15249)	TBD	E.Q.

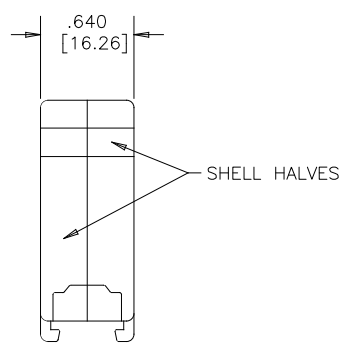


CONNECTOR BACKSHELL

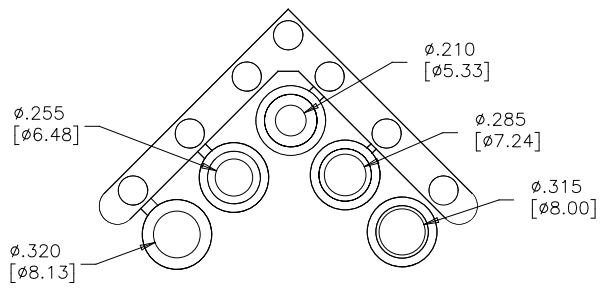
HARDWARE ITEMS



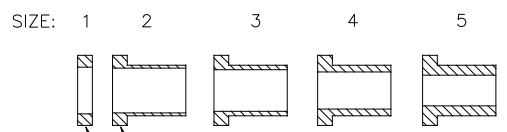
COMPRESSION INSERT TREE



- NOTES:
- EACH BACKSHELL KIT CONTAINS 2 SHELL HALVES, 1 COMPRESSION INSERT TREE AND 2 OF EACH HARDWARE ITEM SHOWN.
 - BACKSHELL IS SUITABLE FOR SUBMINIATURE D CONNECTOR, A SIZE SHELL (15 POSITION STANDARD CONTACTS OR 26 POSITION HIGH DENSITY CONTACTS).
 - COMPRESSION JACKET INSERTS ARE DESIGNED FOR A CABLE DIAMETER RANGE OF .210 [5.33] TO .320 [8.13].
 - MATERIALS - ALL MATERIALS ARE RoHS COMPLIANT
SHELL - ABS COMPOUND, UL94HB RATING, NICKEL PLATED
INSERT TREE - BLACK THERMOPLASTIC, 75 DUROMETER
HARDWARE - STEEL, ZINC PLATED, HEXAVALENT CHROMIUM FREE FINISH



- ASSEMBLY INSTRUCTIONS:
- SELECT THE TIGHTEST INSERT THAT WILL FIT OVER THE CABLE, AND FEED THE CABLE THROUGH IT, PLACING THE END WITH THE SMALLER OD (THE END WITHOUT THE WASHER) TOWARDS THE CONNECTOR.
 - TERMINATE THE CABLE WIRES TO THE CONNECTOR.
 - CUT THE JACKET, FOLD THE SHIELDING BACK OVER THE OUTSIDE OF THE INSERT AND CUT IT JUST SHORT OF THE WASHER.
 - INSTALL SADDLE WASHERS, CAPTIVE SCREWS AND CONNECTOR.
 - PLACE THE WASHER IN OUTERMOST DEPRESSION IN CABLE EXIT AREA OF THE BACKSHELL AND SCREW SHELL HALVES CLOSED.



WASHER OR WASHER PORTION OF INSERT



AMPHENOL PART NUMBER 17E-1725-2

UNLESS SPECIFIED OTHERWISE	DRAWN K.LAMBIE	JAN29/14	Amphenol Canada Corp.
PRIMARY UNITS INCHES	CHECKED		
SECONDARY MILLIMETERS	I.E. APP'D		17E SERIES PLATED PLASTIC BACKSHELL FOR D-SUB CONNECTOR WITH A SIZE SHELL (15 STD OR 26 HD CONTACTS), STRAIGHT EXIT, #4-40 THREAD, RoHS COMPLIANT
REFERENCE IN PARENTHESSES	Q.A. APP'D		
GENERAL TOLERANCES	DWG APP'D		DWG NO. P-17E-1725-2
1 DECIMAL PLACE	ENG. REL. NO. EAR 14259		
2 DECIMAL PLACES	REF.		REV C
3 DECIMAL PLACES ±.020	THIRD ANGLE PROJECTION	DO NOT SCALE DRAWING	
ANGULAR DEGREES			CODE ID NO. 03554 DWG SIZE C SCALE 3:2 SHEET 1 OF 1